

Gardner-Webb University

Digital Commons @ Gardner-Webb University

Gardner-Webb College Arch

Campus Buildings & Grounds

1968

News Clipping - Gardner-Webb College Arch(2)

Gardner-Webb University

Follow this and additional works at: <https://digitalcommons.gardner-webb.edu/gardner-webb-buildings-and-grounds-arch>

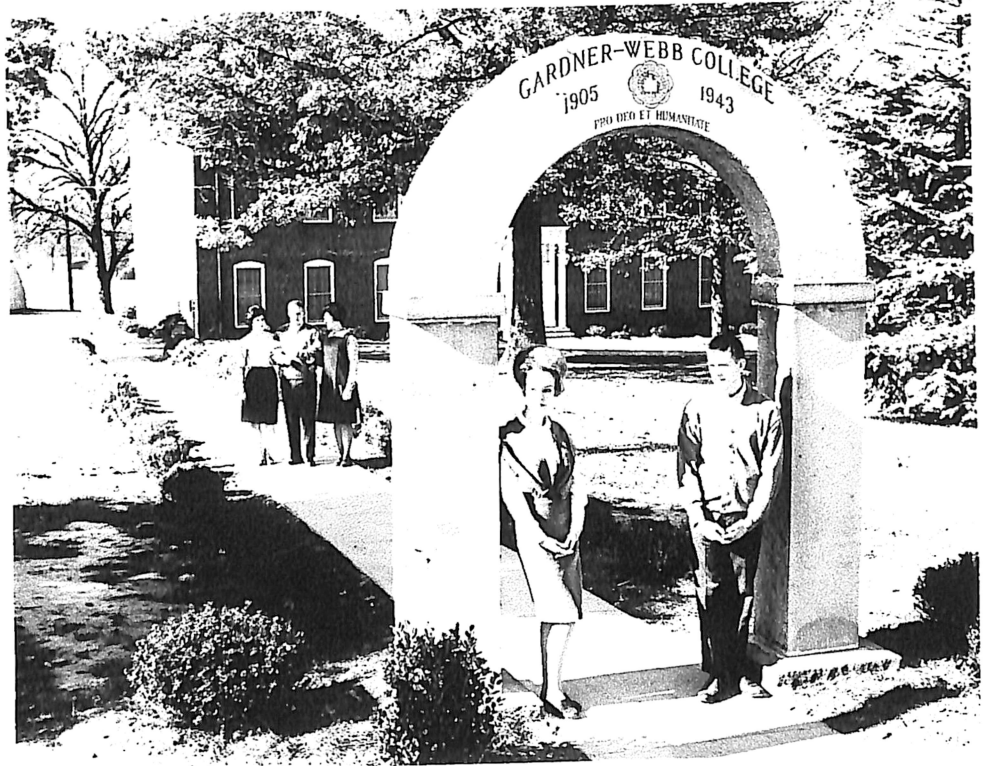
Recommended Citation

Gardner-Webb University, "News Clipping - Gardner-Webb College Arch(2)" (1968). *Gardner-Webb College Arch*. 30.

<https://digitalcommons.gardner-webb.edu/gardner-webb-buildings-and-grounds-arch/30>

This Book is brought to you for free and open access by the Campus Buildings & Grounds at Digital Commons @ Gardner-Webb University. It has been accepted for inclusion in Gardner-Webb College Arch by an authorized administrator of Digital Commons @ Gardner-Webb University. For more information, please contact digitalcommons@gardner-webb.edu.

ARCH



ARCH, HIGHWAY 150 AT WALKWAY TO WEBB ADMINISTRATION BLDG. 1963-1968



ARCH SOUTHEAST CORNER OF DOVER CAMPUS CENTER, 1968 ---

FORMER SITE OF HUGGINS-CURTIS BLDG.