

2016

The Embedded Librarian as Graduate Coach

Pamela Dennis
Gardner-Webb University

Follow this and additional works at: <http://digitalcommons.gardner-webb.edu/doverlibfacpub>



Part of the [Scholarship of Teaching and Learning Commons](#)

Recommended Citation

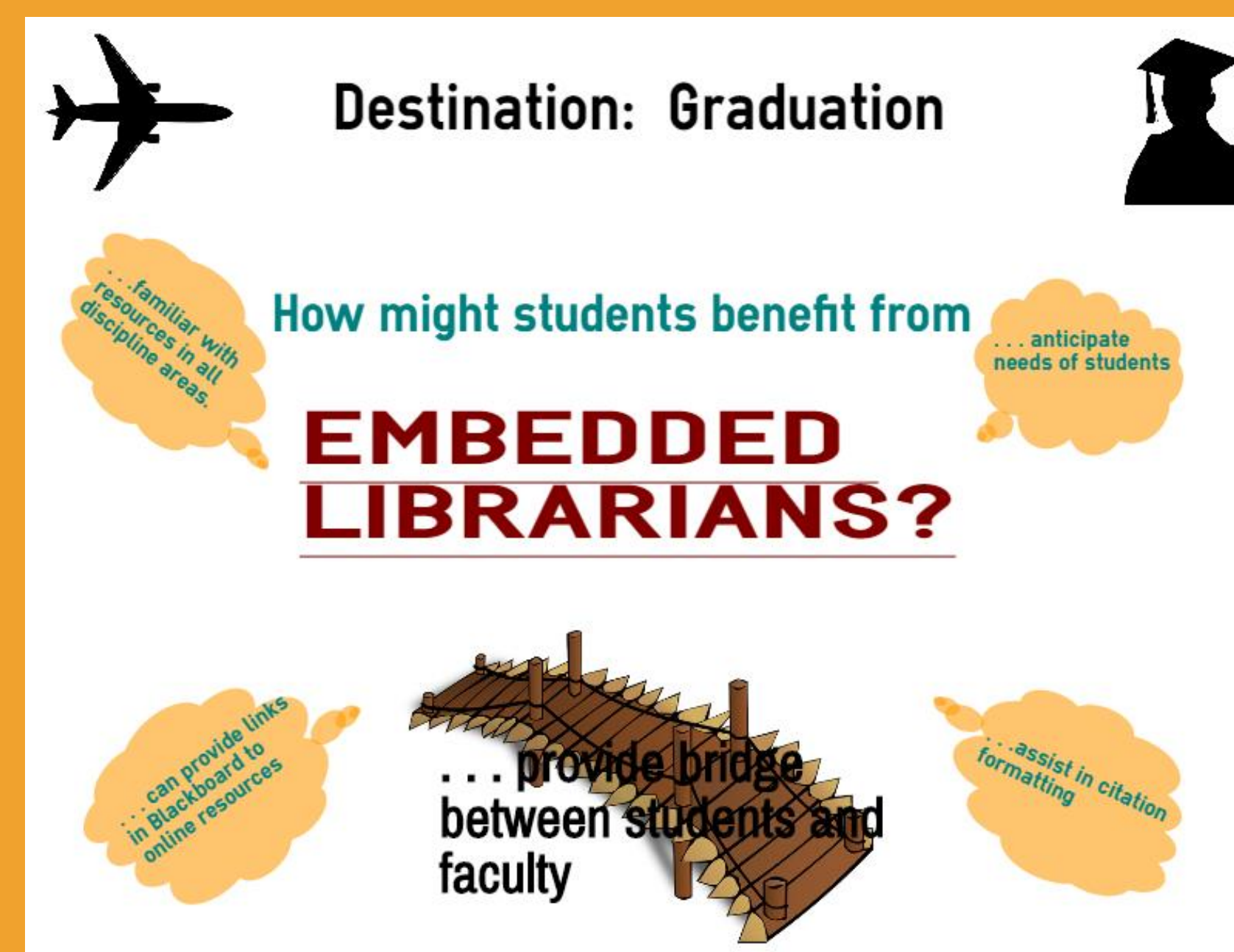
Dennis, Pamela, "The Embedded Librarian as Graduate Coach" (2016). *Dover Library Faculty Publications*. Paper 5.
<http://digitalcommons.gardner-webb.edu/doverlibfacpub/5>

This Presentation is brought to you for free and open access by the John R. Dover Memorial Library at Digital Commons @ Gardner-Webb University. It has been accepted for inclusion in Dover Library Faculty Publications by an authorized administrator of Digital Commons @ Gardner-Webb University. For more information, please contact digitalcommons@gardner-webb.edu.



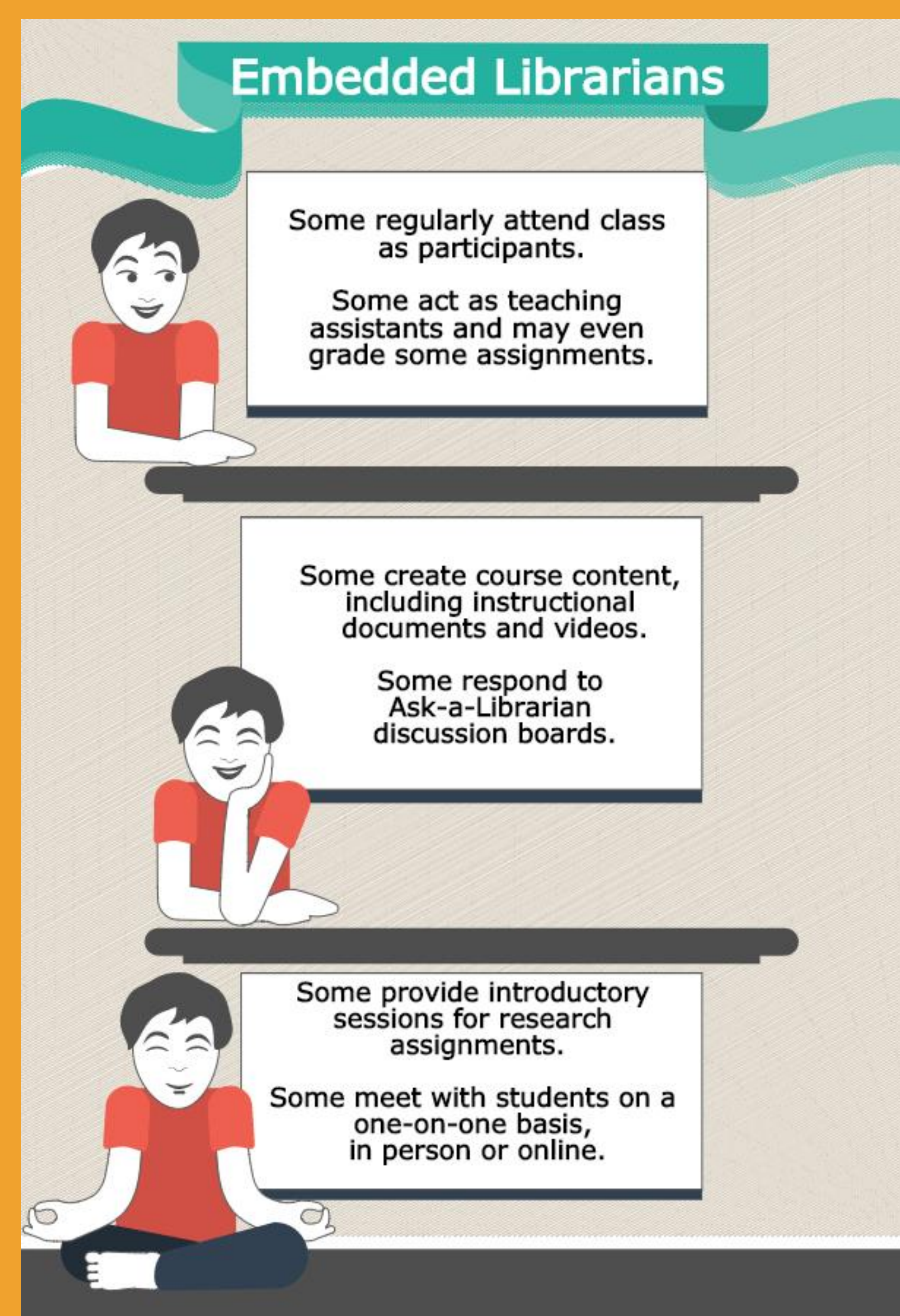
Benefits of Embedded Librarians

Recognizing that reference desk questions are dwindling partially due to the increase in online classes, this poster was created to support the use of embedded librarianship and to demonstrate ways to approach and interact with teaching faculty and maintain relationships with graduate students throughout their academic careers.



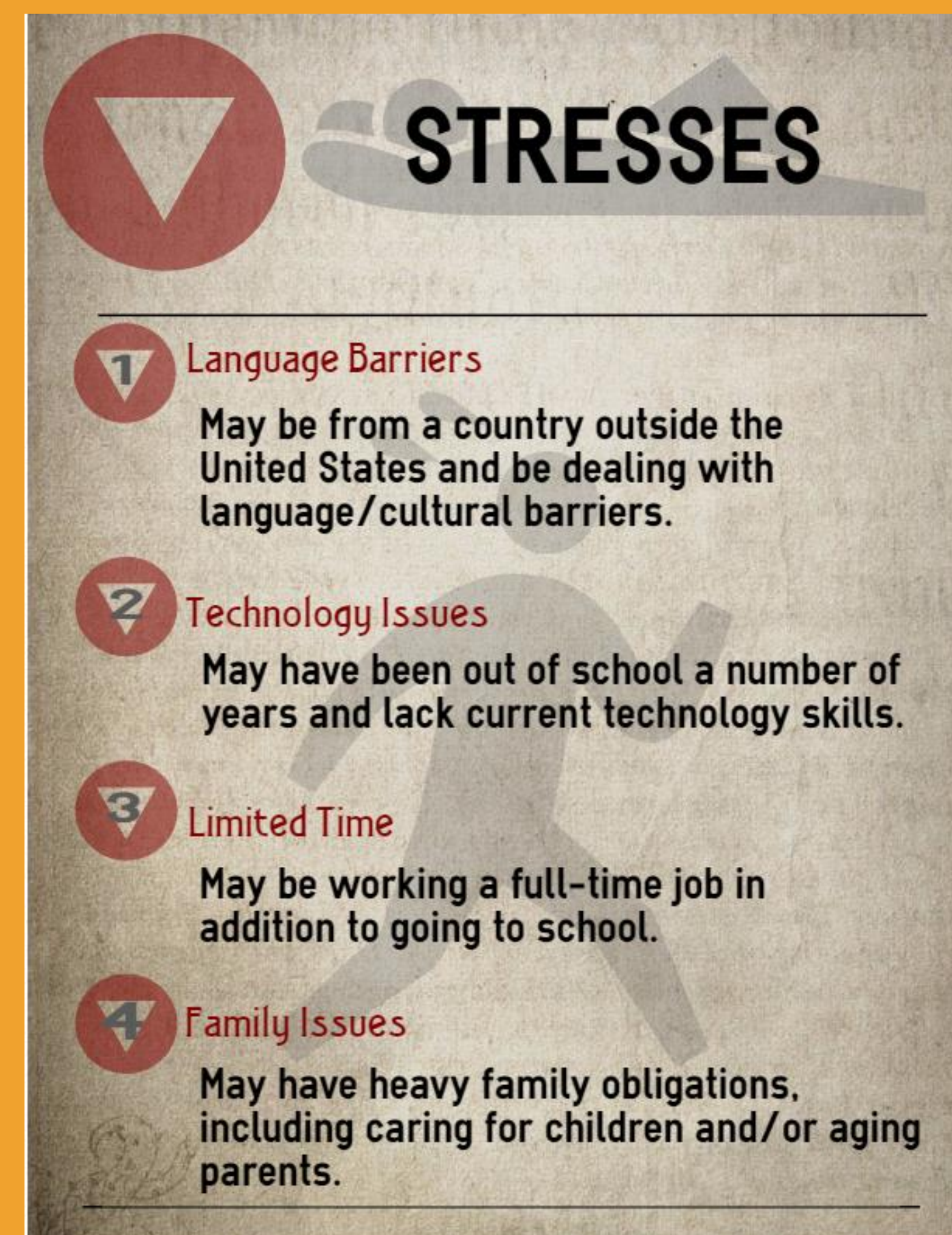
"Overall, I think this was one of the most effective assignments I have had in the program- THANK YOU for having us meet the librarian!"

Types of Embedded Librarians



"The time spent with our librarian . . . was marvelous - an hour well spent. I anticipate many similar meetings with this wondrous resource. If by some strange reason you are reading this and you wonder 'Why don't I have a librarian?' GET ONE. What? No, you can't have mine."

Difficulties for Graduate Students



"I dragged my feet on scheduling this meeting- I should have jumped right on it!"



Creative Commons CCO

Working with Teaching Faculty



"Meeting with the librarian was very beneficial. I do wish we could've had the opportunity in the first semester of the program. . . . Having this face-to-face time with the librarian means I am now more likely to reach out to the librarian services when I need them."

Tools of the Embedded Librarian



Contact Information

Dr. Pam Dennis
Reference and Instruction Librarian
Gardner-Webb University
P.O. Box 836
Boiling Springs, NC 28017
704-406-3051
pdennis@gardner-webb.edu