

Gardner-Webb University

Digital Commons @ Gardner-Webb University

GOAL Undergraduate Academic Catalogs

Gardner-Webb University Academic Course
Catalogs

1995

1995 - 1996, Gardner-Webb University GOAL Academic Catalog

Gardner-Webb University

Follow this and additional works at: <https://digitalcommons.gardner-webb.edu/goal-undergraduate-academic-catalog>

Recommended Citation

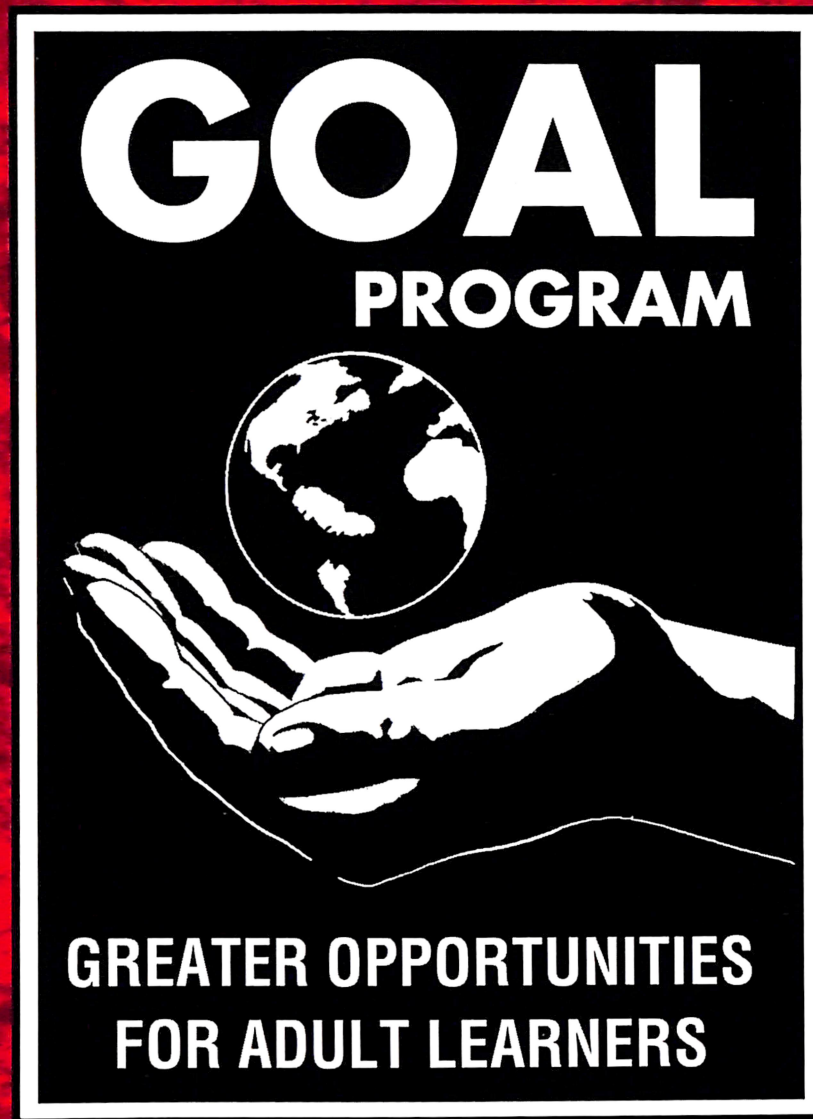
Gardner-Webb University, "1995 - 1996, Gardner-Webb University GOAL Academic Catalog" (1995). *GOAL Undergraduate Academic Catalogs*. 32.

<https://digitalcommons.gardner-webb.edu/goal-undergraduate-academic-catalog/32>

This Book is brought to you for free and open access by the Gardner-Webb University Academic Course Catalogs at Digital Commons @ Gardner-Webb University. It has been accepted for inclusion in GOAL Undergraduate Academic Catalogs by an authorized administrator of Digital Commons @ Gardner-Webb University. For more information, please contact digitalcommons@gardner-webb.edu.

Gardner-Webb

UNIVERSITY



Special Studies Bulletin
1995-1996

1995-1996

Gardner-Webb UNIVERSITY

SPECIAL STUDIES BULLETIN

GARDNER-WEBB UNIVERSITY

Boiling Springs, North Carolina 28017

Telephone (704) 434-4625 or 1-800-288-GOAL (4625)

(Use of Toll-free number is reserved for prospective students)

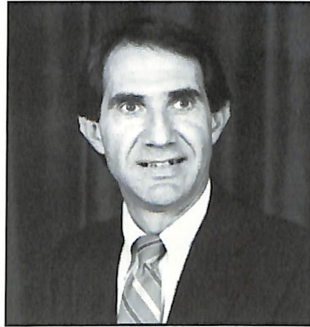
Gardner-Webb University is affiliated with the Baptist State Convention of North Carolina. The University seeks to enroll students from a variety of racial, economic, social, religious and geographic backgrounds. Gardner-Webb does not discriminate against applicants or students on the basis of race, color, sex, national or ethnic origin, physical handicap or religion.



Evan Thompson
Dean of Special Studies



Dr. Barry Hambright
Coordinator and Advisor
Criminal Justice and
Human Services Programs



Dr. T. Eugene Carpenter
Coordinator Human Services
Programs-Statesville
Associate Professor,
Psychology



Ms. Martha Owens
GOAL Business Advisor
Instructor, English



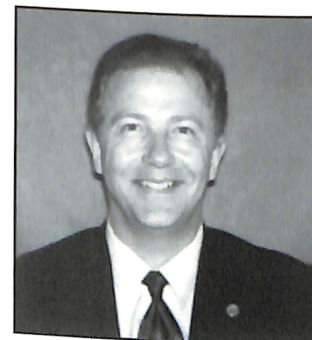
Ms. Emily Brown
Advisor, Health Management,
Human Services
Instructor, Business



Dr. Marcia Miller
Campus BSN Program
Chair



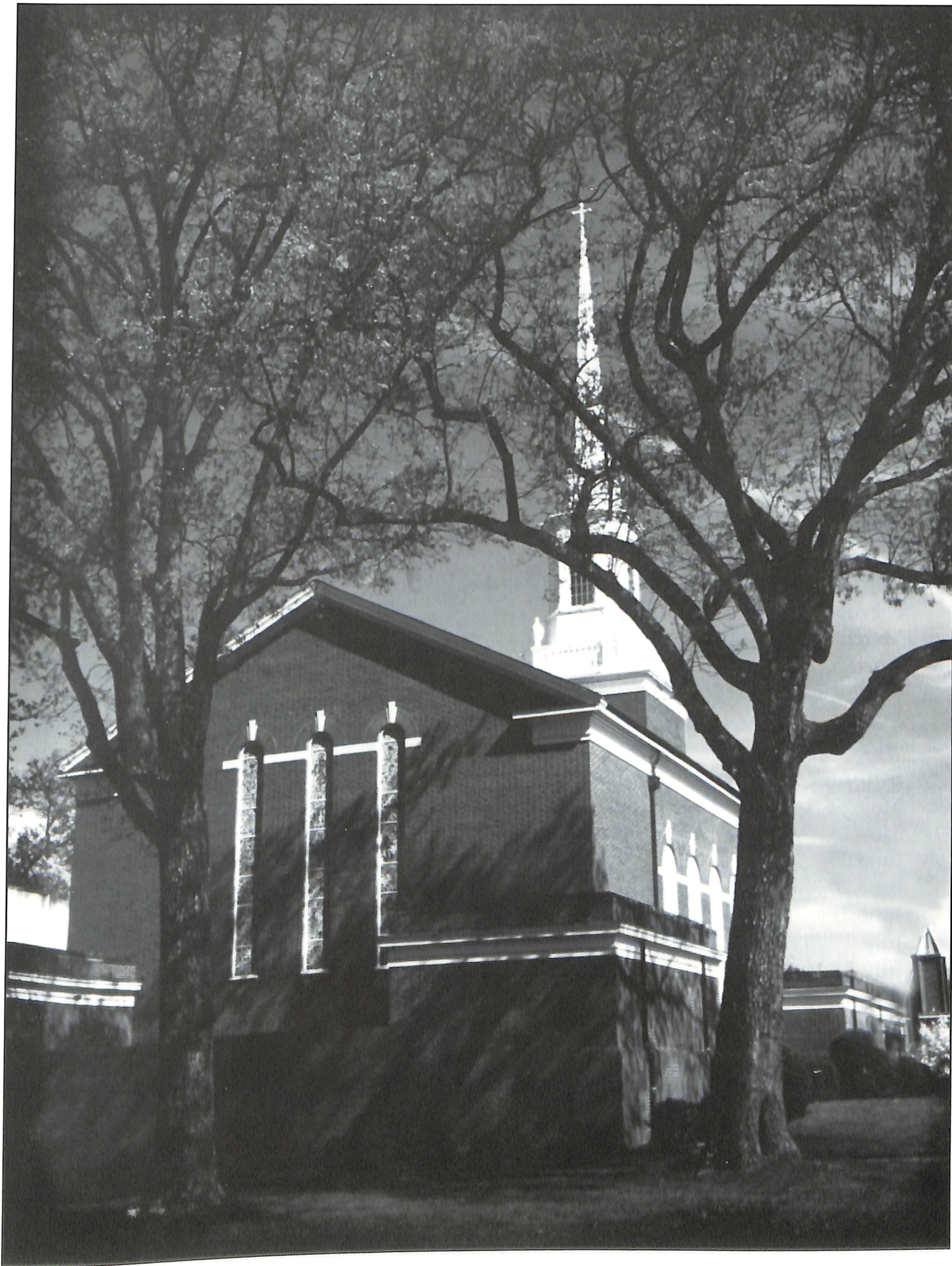
Ms. Wanda Stutts
Davis School of Nursing
Chair



Charles McCuen
Recruiter
Director of Admissions
GOAL



Joyce Mull
Administrative Assistant
to the Dean of
Special Studies



Special Studies

Academic Calendar

1995-1996

Fall Semester 1995—Evening

August 7-10, 14	On-site GOAL Registration
August 28	GOAL Classes Begin
September 1	Last day to withdraw/add or correct registration
September 20	Last day to drop/withdraw with grade of "W"
October 12, 13	Mid-term Reports
October 16, 17	Fall Break
November 10	Last date to drop a class and receive a "WP" or "WF"
November 23, 24	Thanksgiving Holidays
December 11, 12, 13, 14	Final Examinations

Spring Semester 1996—Evening

January 3, 4, 8, 9	On-site GOAL Registration
January 15	GOAL Classes begin
January 19	Last day to withdraw/add or correct registration
February 7	Last day to drop/withdraw with grade of "W"
February 29, March 1	Mid-term Reports
March 4, 5, 6, 7	Spring Break
April 5	Last date to drop a class and receive a "WP" or "WF"
May 5, 6, 7, 8	Final Examinations
May 11	Commencement

Summer School 1996—Evening

May 22	First Term Classes Begin
May 23	Last day to add registration
June 25	First Term Classes End
June 26	Second Term Classes Begin
June 27	Last day to add registration
July 4	Holiday
July 31	Second Term Classes End
August 3	Commencement

CATALOG REQUIREMENTS

The conditions and policies set forth in this catalog have a binding effect upon the University and students for the academic year in which it is in force. The University reserves the right to make necessary changes and corrections. Where changes are made in graduation requirements, the University accepts a moral obligation to provide students the conditions effective the year of their most recent continuous enrollment or an alternative which would not be punitive. Otherwise, all other requirements are effective and in force upon publication of changes.

Introduction to Gardner-Webb University

Gardner-Webb University is a coeducational, residential, church-related university on a beautiful campus just outside Shelby in Boiling Springs, North Carolina. The University derives its name from O. Max Gardner, distinguished governor of North Carolina in the 1930s, and his wife, Fay Webb Gardner. The beauty of the campus and the quality of the academic program owe much to their example and leadership.

Location

Gardner-Webb University is located in the Piedmont section of western North Carolina, one of the most desirable and rapidly developing areas of our nation. Boiling Springs is a small rural town. Nearby Shelby, a city of 18,000, is noted for its support of the arts and as the home of state and national leaders. Forty-five miles east of Gardner-Webb is the thriving city of Charlotte, the largest city in the Carolinas. Less than one hour away to the south is the city of Spartanburg, South Carolina. Gardner-Webb University is easily accessible, being located only three miles from U.S. 74 and thirteen miles from Interstate 85. Less than one hour from campus are the Smoky Mountains with many recreational opportunities.

Gardner-Webb University enjoys the lifestyle of a relatively small institution yet has the advantage of being centrally located to major urban resources in nearby areas.

Students

Gardner-Webb University, founded by area Baptists in 1905, has grown steadily to its current enrollment of over 2,200 students. The 1,900 undergraduates come from many states and several foreign countries. Slightly less than half of the students are men, and the student body includes several racial and socio-economic groups. Gardner-Webb University admits students of any race, color, sex, and national or ethnic origin without discrimination. This diversity enriches the life of the campus community and reflects the nature of American society.

Accreditation

Gardner-Webb University is accredited by the Commission on Colleges of the Southern Association of Colleges and Schools to award Associate, Baccalaureate and Master's degrees. In addition, the baccalaureate nursing program is accredited by the National League for Nursing; the music department by the National Association of Schools of Music; and the School of Education by NCATE. The University is authorized by the immigration authorities of the United States for the training of foreign students.

Statement of Purpose

Gardner-Webb is a private university affiliated with the Baptist State Convention of North Carolina. Its purpose is to provide learning of distinction in the liberal arts and in professional studies within a caring community based upon Christian principles and values. Students, faculty and staff are part of a community of learning, and Gardner-Webb seeks to prepare and encourage students to make meaningful contributions to the global community in which we live. To this end, the University strives to develop students intellectually, spiritually, socially, and physically. They should be able to think independently and critically, communicate effectively, relate well to persons of diverse backgrounds, understand the natural world, understand the development of civilization, understand and appreciate aesthetic values, and grow spiritually. To support this development and foster a community dedicated to lifelong learning, Gardner-Webb emphasizes Christian values, academic freedom with responsibility, free intellectual inquiry and discussion, recognition of the dignity and worth of the individual, and strong faculty-student relationships. While pursuing these values, Gardner-Webb seeks to instill the traits of good citizenship in its students and strives to be a good institutional citizen.

Special Studies Program

Gardner-Webb University provides comprehensive special studies programs, consisting primarily of the Greater Opportunities for Adult Learners (GOAL) program, to meet specialized educational needs of adult learners. The GOAL program provides opportunities for working adults who possess an Associate degree or equivalent (60-64 semester/90-96 quarter hours) to earn a Bachelor of Science or Bachelor of Arts degree during evening hours. The GOAL program is designed to serve students who are unable to pursue a day program because of work schedules, family responsibilities or geographic locations. Programs are available in: Accounting, Business Administration, Health Management, Management Information Systems, Criminal Justice, Human Services, and Nursing. In addition to the Gardner-Webb campus, GOAL programs are provided in the following regional locations: Charlotte, Dallas, Dobson, Hamlet, Marion, Newton, Spruce Pine, Statesville, Troy, Valdese, Wilkesboro, and Winston-Salem, North Carolina.

Classification as a "Special Student" enables an adult learner who possesses a degree or does not wish to pursue a degree, to enroll in a GOAL course or courses for credit. There is no maximum number of hours which may be accumulated as a special student; however, students who accumulate 15 semester hours should inform the Office of Special Studies of their intent. If a degree is

desired, official transcripts must be submitted for evaluation and an advisor assigned. Special students must submit an application for admission and a \$15 application fee. The tuition rate for special students will be the current GOAL tuition rate.

Continuing Education Unit (CEU) experiences are provided on the basis of need. The experiences take the

form of conferences, workshops, special courses, seminars, and symposia. Many of these are provided in conjunction with the Broyhill Academy for the Study of Independent Concepts and the B.E. Morris Academy for Christian Studies.

Greater Opportunities For Adult Learners (GOAL)

CENTERS

Burke
Old Rock School
Highway 70
Valdese, N.C.

Catawba
Newton-Conover High Sch.
West 15th Street
Newton, N.C.

Charlotte
Mercy Hospital
School of Nursing
Charlotte, N.C.

Forsyth
Allied Health Bldg.
Baptist Hospital
Beech Street
Winston-Salem, N.C.

Gardner-Webb Univ. Campus
Highway 150
Boiling Springs, N.C.

Gaston
North Gaston High School/
Gaston College
Dallas, N.C.

PROGRAMS

Accounting,
Business Administration,
Criminal Justice,
Human Services

Business Administration

Business Administration,
Criminal Justice,
Human Services,
Nursing

Accounting,
Business Administration,
Health Management,
Nursing, Criminal Justice,
Human Services

Accounting,
Business Administration,
Management Information
Systems, Criminal Justice,
Human Services, Religion, Nursing

Business Administration,
Criminal Justice

CENTERS

Iredell
Davis School of Nursing
704 Cherry Street
Statesville, N.C.

Mayland
Mayland Comm. College
Spruce Pine, N.C.

McDowell
McDowell Technical
Comm. College
Marion, N.C.

Montgomery
Old Biscoe School
Biscoe, N.C.

Richmond
Richmond Comm. Col.
Hamlet, N.C.

Isothermal
Isothermal Comm. College
Spindale, N.C.

Surry
Surry Community College
Dobson, N.C.

Wilkes
Wilkes Community College
Collegiate Drive
Wilkesboro, N.C.

PROGRAMS

Business Administration,
Management
Information Systems,
Nursing, Criminal Justice,
Human Services

Business Administration,
Human Services

Business Administration,
Human Services

Business Administration,
Criminal Justice,
Human Services

Business Administration,
Human Services,
Accounting, Criminal Justice

Business Administration,
Accounting, Human Services

Business Administration,
Criminal Justice,
Human Services

Business Administration,
Human Services

For more information regarding specific programs, please see the Program of Study section.

Summer School

Gardner-Webb University provides summer classes at all GOAL centers. The institution is a member of the North Carolina Association of Summer Sessions and the North American Association of Summer Sessions. The Summer School is divided into two five-week terms. A student generally carries a three or six-semester-hour load during each five-week term. GOAL registration for both summer terms is conducted by mail. Application for

admission or readmission should precede registration by at least a month.

The Graduate Program, MBA Program, and School of Divinity provide a variety of courses during Summer School. For specific information, see the Graduate Bulletin and/or contact the Dean of Graduate Studies, the Director of the MBA Program, or the Dean of the School of Divinity. A variety of special programs and camps is also provided during the summer.

Library Services

It is the intent of the University to provide library services to GOAL students in a manner which is commensurate with those offered on the University campus. Efforts are constantly being made to expand these services. Services which are currently provided include, but are not limited to, the following:

1. All GOAL students are invited and encouraged to visit the John R. Dover Memorial Library on the University campus and make use of all services.
2. A toll-free number (1-800-253-8330) has been established for those students who are unable to visit the main campus library. Some of the services provided through this toll-free number include:
 - a. Requests to determine if a book or periodical is currently in the Gardner-Webb collection.
 - b. Requests to have books delivered to the student via UPS.
 - c. Requests for photocopies of journal articles to be delivered by U.S. Mail, GWU professor, or courier.
 - d. Requests for reference assistance when starting or during the latter stages of a research project.
 - e. Requests for books or materials through inter-library if not held in the Dover Library collection.
 - f. Requests for an appointment with a reference librarian at the Dover Library.

The toll-free number is to be used only for library services. Calls received on the line cannot be transferred to other University extensions. When making requests for books and periodicals, you must be registered in the current semester and you must have your Gardner-Webb Identification Number available. (This number appears beside your name on all classrolls and on all grade reports.) You will normally be charged only for postage and photocopying at the rate of ten cents per page.

3. Faculty may request an on-site visit by a member of the Dover Library staff. The staff member will make presentations on request or assist the professor.
4. Gardner-Webb faculty will, on an as-needed basis, place collections on reserve in local libraries. These collections will be used for specific courses and will be retained only for the duration of the course.
5. In an effort to increase the availability of resources to off-campus students, agreements have been made with libraries throughout the state. The basis of the agreements provide:
 - a. That the library will allow Gardner-Webb students (most of whom are local residents) full use of all library services and learning resources.
 - b. Gardner-Webb will provide specific material and equipment, on an as needed basis, to the library. This material will be available to Gardner-Webb students and the library's other users.
 - c. Gardner-Webb University faculty and staff, will inform students about the library resources available to them, and how to access these services.

The University currently has written agreements with the following libraries:

Burke County Public Library
C.G. O'Kelly Library - Winston Salem State University
Catawba County Public Library
Catawba Valley Community College Library
Central Piedmont Community College Library
Dobson Community Library
Forsyth Technical Community College Library
Gaston College Library
Gaston County Public Library
Iredell County Public Library
Mayland Community College Library
McDowell County Public Library
McDowell Technical Community College Library
Mitchell Community College Library
Montgomery Community College Library
Montgomery County Public Library
Northwest AHEC Library - Winston-Salem, N.C.
Richmond Community College Library
Spruce Pine Public Library
Surry Community College Library
Thomas H. Leath Memorial Library, Rockingham, N.C.
University of North Carolina at Charlotte
Western Piedmont Community College Library
Wilkes Community College Library
Wilkes County Public Library
Winston-Salem Public Library

Constant efforts are being made to expand the number of agreements and provide additional services to off-campus students. It is felt that this vast network of services meets or exceeds the needs of all Gardner-Webb University GOAL students.

Internet

In addition to the library services described above, efforts are underway to expand the Internet system campus wide. Not only will this provide an unending wealth of resources for our campus, but also allow all off-campus students access to professors and other resources through the use of personal PC's and a modem. It should be noted that students who now have personal PC's already have the capability to interface with Internet, CompuServe, Prodigy, America On-Line and other information services. As our campus library becomes more automated, students will be able to access a wealth of information via their personal computers.

Students Services

Gardner-Webb University is committed to the education of the whole person. This includes the mind, the body, and the spirit. To this end, the University considers the student's activities outside the classroom to be very important. These activities and others help the student to develop social and interpersonal skills, deepen spiritual commitments, explore career opportunities, formulate a philosophy of life, develop leadership skills, and develop sound ethical and moral principles.

The Student Development Division of the University consists of the departments of Athletics, Campus Ministry, Counseling, Career Planning and Placement, International Student Programs, Residence Life, University Police, Student Activities, Orientation, Intramurals and Post Office. While this division is responsible for the coordination of student activities, it is recognized that off-campus students, because of time constraints and other responsibilities, cannot participate in all areas. All appropriate student services are available to GOAL students, are the responsibility of, and are supervised by the Student Services Division of the University.

Counseling Services

Gardner-Webb University recognizes that GOAL students are unique individuals with vastly different experiences from those of the traditional day student. The University also realizes that the situations these students place themselves in can be very stressful and may require counseling.

In recognition of this need Gardner-Webb is committed to providing counseling services to its off-campus constituents.

Students requiring counseling services may call 1-800-253-6473 to make appointments or to receive telephone counseling for emergency situations. Counselors may be reached Monday through Friday from 8 a.m. to 5 p.m. or Monday, Tuesday, and Wednesday evenings between the hours of 6 – 8 p.m.

Orientation

All GOAL students are required to participate in an orientation session during their first semester in the program.



Admissions Criteria

The admissions profile for full admission to GOAL is as follows (all programs except Nursing.):

1. Associate degree or equivalent (60-64 semester/90-96 quarter hours) in a curricular area and from an institution approved by Gardner-Webb University for inclusion in the GOAL program.
2. Present 60-64 semester/90-96 quarter hours of transfer credit with a grade of "C" or better.
3. Completion of specific prerequisite coursework as deemed necessary by the department of the chosen major.

GOAL Admissions Procedures

1. The prospective student completes the application and forwards it to the Office of Special Studies along with the application fee. Concurrently, the student requests official transcripts from all colleges previously attended (credit from two-year business colleges is not transferable).
2. Upon receipt of all the above information, the folder is forwarded to the Transcript Evaluation Officer for analysis of transfer credits.
3. Upon completion of this analysis, the Dean of Special Studies determines student eligibility for the program based on admissions criteria. Students may be fully accepted or accepted with stated conditions. A letter of full acceptance, acceptance with conditions, or deferral, along with a copy of the transcript evaluation is sent to the applicant.
4. The academic advisor is forwarded a copy of all materials for proper advising of the student at a later date. Students may enter at the beginning of any semester or summer term. While there is no application deadline, typically three or four weeks are needed to process all applications.

Requirements For a Second Baccalaureate Degree/Major Through Special Studies

A second baccalaureate degree may be sought by a person who holds a bachelor's degree from another institution. A second major may be sought by a person who holds a baccalaureate degree from Gardner-Webb University. All applicants must have at least a 2.0 GPA (overall) on all college work attempted.

The following requirements must be met by the student who wishes to receive a second degree:

1. The student must complete a minimum of thirty (30) semester hours with Gardner-Webb University beyond the requirements for any previous degree.
2. At least one-half of the requirements for the major must be completed with Gardner-Webb University.
3. The student must maintain a Grade Point Average of 2.0 or better with a grade of C or better in each course counted toward the major.
4. For the second degree, the student must meet all the curriculum requirements, including the core, of the current Bulletin. The student seeking a second degree must choose a major from those listed in the current Bulletin. Because individual course needs are different for each student, the number of semesters required to complete the second degree will vary (effective Spring Semester, 1987).

Transfer Policy

A student may transfer to Gardner-Webb a maximum of 64 semester hours from an accredited two-year institution and a maximum of 98 semester hours from an accredited senior college or university toward meeting degree requirements. An academic advisor will be assigned to work with each student in degree planning. Credit may be transferred only for courses on which the student has earned a C or better. It is transferred as hours earned. A course in which a student made a D (except a course counted in the major) may be used to satisfy a course requirement but carries no hours credit. The student must meet graduation requirements for the total number of hours required.

Transfer Credit

The Registrar interprets the transfer policy and certifies students for graduation.

College-Level Examination Program: Gardner-Webb accepts credit earned through the College Level Examination Program prior to enrollment and through the end of the first semester of enrollment. No credit is accepted for tests taken later than the end of the first semester of enrollment.

1. Credit will be received on the same basis as transferred credit from accredited institutions of higher learning.
2. No credit will be granted in an area for which the examinee has college credit. Also, CLEP tests must be taken before the student enrolls in a comparable

course. No course can be dropped to take a CLEP test, and no subject attempted in class may be repeated by CLEP.

3. Credit will be received as pass/fail. That is, no hours attempted or grade points will be computed in the examinee's Grade Point Average.
4. Unsatisfactory scores will not become a part of the student's record.
5. CLEP test on any subject may be taken only one time.
6. Concerning the Subject Examinations:
 - (a) The student must submit a score at or above the mean score for C students on the CLEP national norms, such scores being provided and recommended by the Council on College-Level Examinations.
 - (b) The number of semester hours granted will be determined by the scope of the material measured, as indicated by the Council on College-Level Examinations.

- (c) Credit thus granted may be applied to the student's course of study without restriction.

Armed Service-Related Programs: Veterans who have successfully completed a course or courses under the Service School training program or through USAFI may submit a record of courses completed for review by the Transcript Evaluator. Credit may be applied or subject waived, depending upon the discretion of the proper authority, and the appropriateness of the course in the student's educational objective and program.

Servicemen's Opportunity College: Gardner-Webb University actively seeks male and female students from among America's past and present service corps. As a participating Servicemen's Opportunity College, this institution offers a variety of educational opportunities to enable service personnel and veterans to learn skills necessary to their performance of duty, advancement, and future vocational growth.

Academic Information

Academic Counseling

Each student who is admitted to the GOAL Program is assigned an academic advisor who assists in the development of a written program of studies. Advising is provided for new students at first registration, and for continuing students at mid-term of fall and spring and in mid-summer. Time does not permit adequate advising for continuing students at registration. They are therefore strongly urged to attend scheduled advising sessions. Continuing students will be assessed a \$40 late registration fee for registrations postmarked after the published deadline.

Academic Load

The normal full load is 12 semester hours each fall and spring semester and 6-9 semester hours during the ten-week Summer School.

Registration

On-site registration is conducted prior to fall and spring semesters. However, mail-in registration procedures have been developed for the mutual benefit and convenience of the University and students. Students should meet with their advisors during the scheduled advising sessions to complete all necessary forms and then mail these forms, with payment, to the Business Office, on or before the published deadline. Continuing students must adhere to the mail-in deadline or be subject to a late registration fee.

On-site registration is not conducted during the summer term. The process is completed entirely by telephone

and mail. It is imperative that the student attend the scheduled advising sessions to assure efficient functioning of the system.

The registration process also includes payment for textbooks which will be delivered by professors on the first night of class.

A student must be officially admitted to the University prior to Registration. An Admission Form must be filed with the Office of Special Studies. A \$15 application fee is required of all applicants. A student is not officially enrolled for a course until officially accepted for admission and cleared with the Business Office. Each Course Request Form must be signed by the faculty advisor prior to Registration. A student may register at any one of the centers for courses offered in all centers.

Note: Continuing students whose mail-in registrations are not postmarked by the mail-in deadline will be assessed a \$40 Late Registration Fee.

Re-admission

Any student who withdraws or does not register for any given semester or term must apply for re-admission to the next scheduled term. An application for re-admission should be filed with the Office of Special Studies at least two weeks prior to the opening of the term in which a student wishes to resume studies at Gardner-Webb University. There is no fee for application for re-admission.

Tuition

Tuition for the 1995-1996 academic year is \$148 per semester hour. The University reserves the right to

change cost per semester hour when the change is deemed necessary. Tuition increases, when necessary, are usually implemented during the summer term; however, the University reserves the right to change tuition and other charges at the beginning of any semester if such change is necessary in the judgment of the Board of Trustees. Students enrolled in 12 or more semester hours who are legal North Carolina residents and are pursuing their first baccalaureate degree may be eligible for the North Carolina Legislative Tuition Grant. During the 1994-95 academic year the grant was \$447 for the fall and spring semesters. The grant is not available during the summer term. Students who have earned two or more Associate degrees may not be eligible for the grant. Check with the Financial Planning Office to determine eligibility.

GOAL students pay the GOAL tuition rate per semester hour, as specified in the applicable Special Studies Bulletin, for classes designated as GOAL classes, regardless of the number of hours taken. When a class taught on the GWU campus is designated as a GOAL class (it may be designated as both GOAL and regular) the GOAL student pays the GOAL tuition rate. GOAL students may enroll for day classes, but will pay day tuition rates.

Any student holding an undergraduate baccalaureate degree will pay the graduate tuition rate per semester hour, as specified in the applicable graduate catalog, for any class taken from Gardner-Webb University, regardless of location, number of hours taken, or classification of course.

Deferred Payment Plan

Tuition, fees, and book charges are payable in full at registration; however, the University makes available a deferred payment plan to those GOAL students who prefer to make monthly payments rather than a lump sum payment at registration.

Terms of the Deferred Payment Plan:

1. The payment schedule will be shared during advising sessions.
2. Deferred Payment Charge will be assessed at a rate of \$2 per credit hour.
3. The Business Office reserves the right to accept or reject any request.
4. The student is responsible for making payment on the three dates set for each semester.

NOTICES WILL NOT BE SENT.

Charge Reduction Policy for Graduate and GOAL Programs

Registration at the University is considered a contract binding the student for charges for the entire semester. However, it is the policy of Gardner-Webb University to give limited charge reductions in the event a student OFFICIALLY WITHDRAWS from class(es). In order to make a course adjustment (withdraw), the student must contact the Registrar's Office in person or by phone at (704) 434-4260. The student will receive a copy of the completed course adjustment form. Withdrawal must be completed prior to the end of the semester in order to officially withdraw.

Reductions will be computed on total charges for tuition, but not on textbooks and fees. Students withdrawing from classes for disciplinary reasons will not be eligible for any reductions and will be liable for the entire semester's charges. (For purposes of interpreting this policy, a week is defined as a Monday through Friday period or any part thereof. The first week is defined as a week in which classes are scheduled to begin.)

Charge Reduction Schedule

Tuition charges for a class(es) will be removed in full provided the student officially withdraws prior to the first official class meeting.

Tuition charges, less \$50, will be removed for the student who does not attend classes but waits until after the first class meeting to officially withdraw. Attendance will be based on the professor's records.

In the event a student attends class(es) and finds it necessary to withdraw, charges will be reduced as follows:

When official withdrawal occurs within—

the first or second week, charges will be reduced80%
the third week, charges will be reduced60%*
the fourth week, charges will be reduced50%*

*There will be no reduction of charges after the second week for courses with a duration of 8 weeks or less.

Note: When a Student's charges are reduced, Federal, State, Institutional and Non-Institutional Aid will be adjusted in accordance with the regulations governing the respective programs. Leaving the University without officially withdrawing may result in a student's forfeiting all financial aid and, thus becoming responsible for the entire balance.

Delinquent Student Accounts

Students with outstanding financial obligations may be prevented from registering for the following semester. A student will not be allowed to participate in commencement exercises or receive a diploma, nor will transcripts be released, until all financial obligations are satisfied. Delinquent accounts may be referred to collection agencies and/or credit bureaus. Financial obligations include, but are not limited to, student account balances, parking, disciplinary and library fines, and returned checks.

Financial Assistance

All requests for financial aid assistance should be directed to the Financial Planning Office of the University. Financial aid awards are made following a determination of the applicant's admission and eligibility. The Financial Aid Form (FAF) and the Free Application for Federal Student Aid (FAFSA) are required for determination of eligibility.

Identification Card

All GOAL students will be issued an ID card primarily for the use of library services both on and off campus. The ID card may be used in connection with other Gardner-Webb University services or activities.

Change of Name or Address

Students are asked to contact the Registrar's Office in the event of any change of name or address.

Adding or Changing Courses

The student's schedule of classes may be adjusted by adding or changing courses with the approval of the Registrar within one week from the beginning of the fall or spring semester. Call the Registrar's Office directly at (704) 434-4260. A \$5 fee will be charged for any change following the student's initial registration unless the change is required by the administration of the University. Changes which result in the student taking the same number of hours as prior to the change will result in no additional tuition charges or reduction in tuition charges.

Withdrawing From Courses

A student may officially withdraw from a class at any time during the first 75% of a semester or summer term. The Registrar's Office provides the necessary forms upon request and a fee is required. A grade of W (withdrew) is recorded for the course during the first four weeks of the semester. After the first four weeks of the semester a WP (withdrew passing) or WF (withdrew failing) is assigned by the professor based upon the professor's assessment of the student's work to date in the course. Registration is a contractual agreement. Students who withdraw from courses resulting in less than a 12 hour enrollment may lose the North Carolina Legislative Grant and/or other financial aid and will be liable for payment of tuition for all registration unless deemed providential by the administration of the University.

Auditing Courses

Any student may audit a class with the permission of the professor of the course. All auditors must file an application with the Office of Special Studies. Auditors

not enrolled in other Gardner-Webb classes will be charged \$50 per course plus any special fees.

Auditors are subject to the attendance regulations of the University. Additional requirements, if any, are the responsibility of the professor. Credit will not be allowed for any course for which a student registers as an auditor.

Taking Courses at Other Institutions

Permission for any Gardner-Webb student to enroll at another institution must be obtained beforehand from the Registrar and requires the consent of the chair of the department in which the student is majoring. The University is not obligated to accept credit for any course when prior permission has not been granted. Study at another institution cannot be used to improve one's academic standing. Correspondence courses taken as a transient student will not be approved for transfer.

Independent Study

The term "independent study" is reserved for those courses specifically designed as guided reading and/or student-initiated research courses that include a written project/paper which shall become part of the holdings of the Dover Library at the conclusion of the course. Independent study is open to students with junior and senior standing and requires the approval of the professor offering the study, the chair of the department, and concurrence of the Dean of Special Studies. The proposal must be submitted and approved by the end of the semester preceding the study. No more than six hours credit in independent study may be applied toward graduation.

Course by Arrangement

A course by arrangement is restricted to a catalog course which is not offered by the University during a given semester or cannot be scheduled by the student. The course might be offered to the student on a one-to-one basis. The option is limited to instances of extenuating circumstances. Approval of the professor, department chair, and Dean of Special Studies is required.

Withdrawal, Suspension, Expulsion

Voluntary termination of enrollment during the course of a semester or summer term is defined as withdrawal. Dismissal from school for a specified period of time is suspension, and expulsion is dismissal for an unspecified period of time. Any evening student leaving school before the end of a term is required to secure a withdrawal form from the Registrar, complete it in full, and return it or call the Registrar's office at (704) 434-4260 to completely withdraw by phone. Honorable dismissal is granted only if these procedures are followed, and failure to comply will result in the recording of the F grade on all work taken that term.

Classification of Students

Juniors—students fully qualified academically for credit who have earned 60 or more hours of credit, but less than 90 semester hours.

Seniors—fully qualified academically for credit who have earned 90 or more hours of credit.

Class Attendance Policy

Regular class attendance is an important student obligation, and each student is responsible for all work conducted in class meetings. Students are required by University policy to attend a minimum of 75% of the scheduled class meetings. Failure to do so will result in loss of credit for the course. Furthermore, it is the option of the professor to set a more stringent class attendance policy. During the first week of the semester, the profes-

sor will clearly state, in writing, the attendance policy which will govern the class. Students are responsible for knowing the number of absences they accumulate.

Absence from class does not excuse the student from responsibility for class work. Planned class absences for foreseeable personal circumstances or official University business must be negotiated with the professor prior to the absence and plans made for the submission of course work missed.

If weather prevents class meetings, cancellation will be announced on local radio and television stations for each center. Professors and students may agree upon a mutually acceptable time for make-up of cancellations. A course generally consists of 16 meetings including the final examination. However, an exception may be made for those courses that are affected by official University holidays.

Grades and Reports

Academic Appeals

A student who has a question about an academic decision should consult the University official responsible for the decision. If the matter is not resolved to the student's satisfaction, the student may appeal to the professor, the Chair of the academic department, the Dean of Special Studies and the Educational Policies and Standards Committee, in that order. All academic appeals (other than grades as noted below) must be made in writing no more than 18 months after the date of the decision being appealed. The Dean of Special Studies should not be contacted unless the professor of the course and/or the chair of the department have been previously contacted and all other avenues exhausted.

Grading System

Grades and grade points represent the instructor's final estimate of the student's performance in a course. The following grades are used by Gardner-Webb University:

TR-Transfer Credit	Hours Credit Only	Hours Credit Only
CR-Credit Hours	Credit Only	Credit Only
AU-Auditor	0	0
Repeated-Repeated Course	0	0
#—Higher Attempt		
Multiplied by Quality Points	1	
Computed According to Grade for Final Grade		

An "I" is assigned where course work is not complete because of circumstances beyond the control of the student. The student has until mid-term grade report of the next semester to complete the course work and remove the "I"; otherwise an "F" will be automatically assigned by the Registrar's Office.

A "W" will be assigned when a student withdraws from a course during the first four weeks of the semester. After the first four weeks of the semester, a WF or WP is assigned by the professor based upon the professor's assessment of the student's work to date in the course. Summer withdrawal dates are published in registration materials.

The last date for withdrawing from an individual course will be four weeks after midterm grade report period or a date not to exceed 75% of the course (including summer school). After this time the only courses which will be dropped are those which a student drops when withdrawing from the University.

Once a grade has been submitted to the Registrar, it will not be changed except in the event of a clerical error or an error in calculation, or as a result of the appeal process described below.

A student who has a question about a grade should consult the instructor as soon as possible. A student who believes a grade to be unfair may appeal to the instructor,

	Hours Attempted Per Credit Hour	Quality Points Per Credit Hour
Grades	1	4
A—Exceptional	1	3
B—Outstanding	1	2
C—Satisfactory	1	1
D—Marginal	1	0
F—Failing	0	0
P—Passing	1	0
I—Incomplete	0	0
W—Withdrew w/o penalty	0	0
WP—Withdrew passing	1	0
WF—Withdrew failing		

the department chair, the Dean of Special Studies, the Academic Dean, and the Educational Policies and Standards Committee, in that order. The last date to initiate a grade appeal is the end of the following semester.

Under no circumstances will a grade be changed, after having been reported to the Registrar, without the approval of the Academic Dean.

Grade Point Average (GPA)

The student's general academic performance is indicated by a Grade Point Average. This figure is determined by dividing attempted semester hours into earned quality points. Three Grade Point Averages are significant for each student: the semester GPA, the GPA for all work taken at Gardner-Webb and the overall GPA which includes any work taken at other institutions as well as the student's work at Gardner-Webb. An overall average is calculated manually for University-related agencies, the Alpha Chi advisor, and departments requiring overall GPA and includes all work attempted at previous educational institutions. Students must achieve a minimum GPA of 2.0 on all work taken at Gardner-Webb to qualify for graduation.

Repeating Courses

Only a course with a grade of D, F, or WF may be repeated. When a course is repeated, only the higher grade is counted in computing the Gardner-Webb GPA.

Retention Standards

Standards for acceptable academic progress at Gardner-Webb University are set to assist students in assessing the quality of their performance. Academic probation and suspension are used to alert students to potentially serious academic difficulty in their progress toward degrees.

Students are placed on academic probation as a warning that their level of academic achievement is falling below the level expected of students in their class. If their academic achievement should not improve, they are in danger of being suspended from the University.

Students will be placed on probation whose cumulative Grade Point Average falls below the minimum standards.

Juniors with 60 to 89 hours—1.9

Seniors with 90 hours and above—2.0

A student placed on academic probation remains on probation for the entire semester. The student will register for no more than 12 credit hours during any semester on probation.

In order to be removed from academic probation, the student must bring the cumulative average up to that required of the class. If the student fails to bring the cumulative average up to a satisfactory level during the probation semester, but the semester's average is at or

above the minimum required, probation will be continued for another semester.

If at any time while on academic probation the student's semester and cumulative average fall below the requirement, the student will be placed on academic suspension. The student will be suspended from the University for the next fall or spring semester. At the end of a one semester suspension the student may submit a formal application for readmission. If granted, the student may register for classes and will be automatically placed on academic probation.

Should a second academic suspension occur, it will be for at least two semesters. After a two semester suspension from the University, the student must submit a formal application for readmission. If granted, the student may register for classes and will be automatically placed on academic probation. If placed on suspension a third time, the student will be suspended for two semesters. Readmission requires the approval of the Admissions and Financial Aid Committee. Students suspended from the University are not automatically reinstated upon reapplication.

A student who wishes to appeal the denial of reinstatement may do so through the Admissions and Financial Aid Committee. A student who wishes to appeal being placed on academic probation or suspension may do so through the office of the Academic Dean. Students on either academic or disciplinary suspension are not allowed to participate in dramatic, musical, athletic, or other practice sessions since they are not to represent the University or participate in the public performance of such events.

Summer study at Gardner-Webb University may be used to improve one's academic standing. For purposes of assessing the student's academic standing, the summer study would be treated as an extension of the spring semester. A student who is on academic probation or suspension may not use study at another institution to improve his/her Gardner-Webb academic standing.

Honors

Semester Honors

Two lists of honor students are posted each semester:

1. Dean's List— Students enrolled for a minimum of 12 hours and fewer than 15 must have a 4.0 Grade Point Average, and one taking 15 hours or more must have a 3.7 or better with no grade below C.
2. Honor Roll— Students enrolled for a minimum of 12 hours and fewer than 15 must have a 3.5 Grade Point Average with no grade below C, and one taking 15 or more hours must have a 3.2 but less than a 3.7 with no grade below C.

Graduation Honors

Effective Spring Semester 1994, to be considered for baccalaureate honors, a graduating student must complete a minimum of 64 hours at Gardner-Webb University and his or her GPA for that work taken here must be at least 3.5. Those in the upper 12% of the graduating class will receive honors in an approximate 1:2:3 ratio with regard to summa, magna, and cum laude designations. This standard will be applied to graduates in each of the following categories: Arts/Sciences, Elementary Education/Physical Education, Day Business, GOAL Arts/Sciences, and GOAL Business.

GOAL Academic Award

Each spring semester, during commencement activities, the GOAL Academic Award is presented to the GOAL student with the highest overall academic grade point average. This grade point average considers all transfer work as well as work at Gardner-Webb.

Graduation Requirements

A minimum of 128 semester hours is required to complete requirements for the baccalaureate degree. All candidates for graduation must take their final 30 hours with Gardner-Webb University. Students transferring from junior colleges are required to complete a minimum of 64 semester hours of subsequent study in senior colleges or universities, with at least the final 32 semester hours with this institution.

A student must have a minimum grade of C on each course counted toward the major. A transfer student is required to complete at least one-half of the major at Gardner-Webb (15 semester hours).

A minimum Grade Point Average of 2.0 on a 4.0 scale based on the University grading system is required for graduation.

Application For Graduation

Each student is responsible for fulfilling all requirements for the chosen degree program. In cooperation with his/her advisor, the student is also responsible for filing an Application for Graduation during the semester no later than the end of preregistration during the semester prior to the final semester of study. Specific deadlines will be published and a \$40 late fee will be imposed after this date. A final deadline will also be published after which applications will be carried forward to the next scheduled commencement. All candidates are required to be present at Commencement. The University is not obligated to grant a degree to any candidate for graduation who does not attend the exercises. Students who cannot attend commencement will be required to attend the next scheduled one. Contact the Dean of Special Studies to request such a change.

Student Responsibility

The student bears the final responsibility for the selection of a program of study and adherence to all published regulations and requirements of the University, including the preceding requirements for graduation.

Career Planning and Placement

The Placement Office, located in the Dover Campus Center, seeks to assist students in obtaining positions in their chosen fields. The Family Educational Rights and Privacy Act of 1974 provides that students may have access to their placement records under certain conditions and that files may be released only with the written permission of the student. Therefore, all students registering with the Placement Office must sign a Placement Authorization Form. All graduates are advised to keep their placement files current.

Campus Shop (Hours: 8:30-5:00, Monday-Friday)

The Campus Shop, located on the ground floor of the Dover Campus Center, provides all books and materials needed by students for their courses of study. Textbooks will be delivered by GOAL professors at their first class meetings. Book buy-back is conducted near the Campus Shop by book companies during the week of final examinations each fall and spring semester.

Class rings and graduation announcements must be ordered in writing. Class ring brochures are available upon request at the regular University telephone number (704) 434-2361, Extension 4273. Those desiring to purchase a University yearbook may write to: Yearbook Advisor, Gardner-Webb University, Boiling Springs, N.C. 28017.

Student Access to Educational Records

Gardner-Webb University complies with the Family Educational Rights and Privacy Act of 1974. This Act is designed to protect the privacy of educational records, to establish the right of students to inspect and review their educational records, and to provide guidelines for the correction of inaccurate or misleading data through informal and formal hearings. Students also have the right to file complaints with The Family Educational Rights and Privacy Act Office (FERPA) concerning alleged failures by the institution to comply with the Act.

Institutional policy explains in detail the procedures to be used by the institution for compliance with the provisions of the Act. Copies of the policy can be found in the Office of the Registrar. That office also maintains a Directory of Records which lists all student educational records maintained by this institution. Information known as Directory Information will be published unless the student specifically requests the Registrar's Office withhold this information. Directory Information is

defined as the following: student name, local and permanent addresses, telephone numbers, date of birth, major(s), dates of attendance, previous educational institutions attended, and degree and awards received.

Questions concerning the Family Educational Rights and Privacy Act may be referred to the Office of the Registrar.

Noel Programs for the Disabled

The Noel Programs for the Disabled provide support services to deaf, blind, and other identified disabled students. In order to assess each disabled student's needs and to provide the necessary support services, professional documentation of a disability or disabilities must be furnished no later than three weeks prior to the begin-

ning of services. Documentation must be current, having been written within at least a three year period before a disabled student's enrollment to Gardner-Webb University.

Parking

On-street parking on the periphery of the Gardner-Webb Campus is available. If on-campus parking is desired, a decal is required, which may be purchased at the Security Office. The annual parking decal costs \$25, and one for the summer costs \$10. A decal is issued for each automobile.

Parking at off-campus centers is adjacent to the classroom buildings.

GOAL Core Curriculum

Before graduation from the Gardner-Webb University GOAL Program with a bachelor's degree, the student will have completed a liberal arts core which consists of the following areas of coursework taken at a community/junior/technical college, another senior institution, and/or Gardner-Webb University. It is anticipated that Gardner-Webb will offer the courses in the specified areas over a two-year period. Advisors will work with students (using the transcript evaluation) to determine the extent to which requirements have been met before coming to Gardner-Webb and will assist the student in selection of courses.

I. Communication

A. English 101

B. English 102

All accepted for admission to GOAL for the Fall 1993 and subsequent semesters will present evidence of completion of a year of English coursework (freshmen English) from a community college or senior institution. Students not meeting this requirement may be admitted and can take English 300 (Composition and Literary Interpretation) at GWU. This course will be in addition to all other graduation requirements.

C. Oral/Visual Communication

Most students have this competency through previous coursework in speech, business communications, or other similar courses. For those that have not met the competency, the advisor will ensure that the student enrolls in appropriate courses at GWU which emphasize oral and visual presentation. Drama, speech, debate, business communications, teaching, preaching, or other approved courses will meet this competency.

II. Critical Thinking

A. Mathematics

A course in probability & statistics, finite math, or a higher level course such as college algebra, trigonometry, or calculus.

B. Computer Literacy

Computer literacy can be validated in one of four ways:

1. The student has taken or will take an introductory computer course which emphasizes basic computer skills.
2. If a student makes regular use of a computer in his/her job then the student can secure a letter from his/her employer outlining these computer skills and indicating the specific computer tasks which are performed by the individual on a recurring basis.
3. The student may take a computer literacy test administered by the University to determine if he/she has attained an acceptable level of computer literacy.
4. If a student has not met requirements through one of the above, a required workshop will be provided by the University.

III. The Natural World - Two courses

A. Science 302 - Physical Science

B. Science 303 - Human Biology

C. Science 322 - Environment

Two regular college courses in Biology, Chemistry, Physics, Geology, etc., may be used to satisfy the requirement.

IV. Personal Development - Two Courses

A. Psychology 380 - Personal Assessment & Adjustment

B. Health & Physical Education 338 - Health Maintenance, Promotion, and Wellness

V. Civilization - Two Courses from the following:

A. Social Science 305 - Global Understanding

B. History 301 - Western Civilization I

C. History 302 - Western Civilization II

D. History 319 - 20th Century U.S. History

E. Political Science 302 - U.S. Government

Students who have taken no history must take at least one history course from the above at GWU.

VI. Aesthetics - Two Courses (1 from each category)

A. Art 307 - Art Appreciation for the adult learner

Music 320 - Survey of Music

French 300 - Aspects of French Culture and Language

Spanish 300 - Aspects of Spanish Culture and Language

B. English 330 - English Literature Survey I

English 331 - English Literature Survey II

English 332 - American Literature

VII. Christianity - Two Courses

A. Religion 304 - Old Testament Survey

B. Religion 305 - New Testament Survey

Note: Effective fall semester, 1994, two writing level II courses beyond the CORE requirement are required for graduation, one of which must be in the discipline of the student's major field of study. Consult with your advisor concerning this new requirement.

Major Programs of Study

Broyhill School of Management

The Broyhill School of Management seeks to prepare students to function effectively in society, in the business community, and in the public service, with a program which is designed to meet the changing needs of these communities; to promote understanding of business enterprises and economic and governmental institutions; and to provide the tools for continued professional training. Bachelor of science degrees in accounting, business administration, and management information systems are available to qualified GOAL students. A minimum of 128 semester hours is required for graduation. Students transferring 64 or more semester hours from two-year colleges are required to complete a minimum of 64 semester hours of subsequent study in senior colleges or universities with at least the final 32 semester hours with Gardner-Webb University.

Bachelor of Science in Health Management Degree Requirements

The Gardner-Webb Bachelor of Science Degree Program in Health Management is designed for the student who has an associate degree or equivalent who wishes to acquire academic preparation in management as related specifically to health care.

Prerequisites: (These should be completed prior to enrolling at Gardner-Webb.) An associate's degree, or equivalent, in a curricular area and from an institution approved by Gardner-Webb for inclusion in the GOAL Program; Accounting Principles (2 courses), Macroeconomics (1 course), Microeconomics (1 course), and the equivalent of GWU's English 101 and 102.

GOAL Core Courses: Please see page 13.

GOAL Major: Health Management 300, 301, 303, 304, 307, 308, 410, Management 400, 403, 422, Business Administration 325 or Management 425.

Accounting Degree Requirements

*Prerequisites: (These should be completed prior to enrolling at Gardner-Webb.) 6 semester/9 quarter hours in accounting principles, one course each in macroeconomic and microeconomic principles, one course in cost accounting, and one course in Federal income taxation. The equivalents of Gardner-Webb's English 101 and 102 are also prerequisites.

GOAL Core Courses: Please see page 13.

GOAL Major: Business Administration 300, 305, 312, 318 (or Management 422), MGT416 (or an Accounting Elective), Business Administration 480, Accounting 313, 314, 435, 450, Internship 420 or other business elective.

ACC 313, 314, 435, and 450 must be taken at Gardner-Webb if not previously taken at a senior institution.

Business Administration Degree Requirements

*Prerequisites: (These should be completed prior to enrolling at Gardner-Webb.) Two courses in accounting principles and one course each in macro- and microeconomics, and the equivalent of Gardner-Webb's English 101 and 102. GOAL Core Courses: Please see page 12. GOAL Major: Business Administration 300, 305, 312, 318 (or Management 422), Management 410 (or 403), Business Administration 480, Management 400 (or 416). 10 semester hours of business electives.

Management Information Systems Degree Requirements

This major is available only at the Iredell Center in Statesville and on the Gardner-Webb campus.

*Prerequisites: (These should be completed prior to enrolling at Gardner-Webb.) Two courses in accounting principles, one each in macro- and microeconomics, and an associate degree in Management Information Systems/Data Processing, or 14 semester/21 quarter hours in computer-related subjects; equivalent of

Gardner-Webb's English 101 and 102. GOAL Core Courses: Please see page 13. GOAL Major: Business Administration 305, 312, 480, Management 416, 410 (or 403), Internship or other business elective, Management Information Systems 371, 423 (or 432) 433, 471, 485.

*An applicant must have completed at least two courses in accounting and one course in economics to be accepted. Applicants with economics deficiencies may take Economics 301 and/or 311 to satisfy the requirements. These substitute courses will be offered at selected GOAL centers.

School Of Nursing

Bachelor of Science in Nursing Program

The Bachelor of Science in Nursing program is coordinated through two campus centers. The Gardner-Webb University campus, located in Boiling Springs, accommodates both boarding and commuting students. The Iredell, Forsyth and Charlotte Centers are coordinated through the School of Nursing at the Statesville campus and accommodate commuting students only. The purpose of the Davis School of Nursing BSN program is to provide baccalaureate nursing education within a caring Christian atmosphere, to advance the practice of nursing through the utilization of nursing research, and to enhance the health and well-being of the community served. To support this purpose, the program:

- (1) provides registered nurses with varying educational, experiential, and cultural backgrounds an entry point into baccalaureate nursing education;
- (2) provides an upper division major in nursing;
- (3) prepares a generalist who can deliver professional nursing care in a variety of settings;
- (4) prepares a nurse accountable to the profession and society; and
- (5) provides the foundation for graduate education in nursing.

Admission to the Bachelor of Science in Nursing Program

Students applying for admission to the BSN program must also apply for admission to Gardner-Webb University through the Office of Special Studies.

Prerequisites for Admission:

- A. Completion of an associate's degree with a major in nursing or a hospital diploma nursing program with RN certification from the state of North Carolina.
- B. Completion of a minimum of 25 semester hours of nursing courses at the ADN level or the completion of a series of nursing exams for 37 hours of credit with 25 hours applied as basic to baccalaureate nursing courses. Note: Any credits received over 25 hours

will be grouped under the category of ADN nursing elective hours. (Refer to the BSN Student Handbook for detailed information). Hospital diploma graduates who need to complete nursing exams for credit must do so within one and one-half years of beginning the program. Students cannot enroll in 300 and 400 level nursing courses until testing is completed.

- C. One year of clinical nursing experience within the past five years or completion of a nursing program within the past year.
- D. Two references upon initial application.
- E. Cumulative and nursing GPA of 2.5. Students who have a GPA less than 2.5 but no lower than 2.0 may also be accepted under special conditions. These students must complete 12 hours of credit through Gardner-Webb University with a grade of C or above in each course before enrolling in the nursing major. Graduates of diploma schools of nursing or individuals who are not eligible to receive lower division nursing transfer credit may earn a maximum of 37 hours of nursing credits, depending upon the results of selected tests. NOTE: Credits for advanced placement may be earned via CLEP, NLN, ACT-PEP and departmental exams. Such credits earned will be interpreted as credits earned through Gardner-Webb.
- F. Successful completion of courses in the following areas is recommended before entry into the program:
 1. Completion of coursework in anatomy/physiology and microbiology with a required grade of C or higher. Hospital diploma graduates who completed this coursework and do not have college transfer credits for these courses may elect to take the NLN exams for these courses. Students may also opt to take Science 303, Human Biology to meet the anatomy/physiology requirement. (This includes students who have not earned a C or higher in anatomy/physiology.)
 2. English 101 and 102 (300) with a required grade of C or higher.
(Special admission status may be granted to students lacking some of the mentioned courses.)

BSN Degree Requirements:

- A. **GOAL CORE:** See Page 13. (Note: Nursing 307, Communications/Computers in Nursing satisfies the GOAL Core requirements for oral/visual communications and for computer literacy.)

Note: Political Science 302 is required of all BSN students.

- B. **MAJOR:** Nursing 300, 301, 302, 307, 401, 403, 404, 405, 409. Students may also take Nursing 406 and/or Nursing 495 if additional elective hours are needed for graduation.
- C. **NURSING SUPPORT COURSES:** Grade of "C" or higher is required. Biology 335, Environment or Environmental Health course, Sociology 340; One 300 or 400 level management or health management course; one statistics course (Students who take Math 316 and earn a grade of "C" or higher will not be required to take an additional statistics course.), Political Science 302.

Special Nursing Requirements:

1. Students must provide their own transportation to the clinical agencies.
2. Health Form with complete immunization record must be completed prior to enrollment in any clinical nursing course.

For detailed information on admission, transfer credit, and advanced placement for the Gardner-Webb University campus center, write or call:

School of Nursing-BSN
Gardner-Webb University
Campus Box 312
Boiling Springs, N.C. 28017
Phone (704) 434-4364

For detailed information on admission, transfer credit, and advanced placement for the Statesville campus center (includes Iredell, Forsyth, and Charlotte Centers), write or call:

Davis School of Nursing
Gardner-Webb University--Statesville Campus
P.O. Box 908
Statesville, N.C. 28687-0908
Phone (704) 872-3664

Department of Social Science

Criminal Justice

The Gardner-Webb Bachelor of Science Degree Program in Social Science with a concentration in Criminal Justice is designed for the student who has an Associate Degree in Law Enforcement or its equivalent from an accredited institution. At least 21 quarter (14 semester) hours of law enforcement courses and the equivalent of Gardner-Webb English 101 and 102 must be successfully completed prior to admission to the GOAL Program.

I. GOAL Core Requirements (See page 13)

II. Major Requirements (30 Hours)

Political Science 314, Health 401, Sociology 400, Psychology 401, Management 400, Criminal Justice 410, 420, 430. May be taken in the major. Up to 15 hours in the major may be from transfer credit.

III. Electives

(Students may choose as many as needed to complete 64 senior college hours.) Political Science 304, 315, 495, Sociology 310, 313, Management 403, Psychology 305, Criminal Justice 497, 498.

A minimum of 128 semester hours is required for graduation. Students transferring from two-year colleges are required to complete a minimum of 64 semester

hours of subsequent study in four-year colleges or universities, with at least the final 30 semester hours with Gardner-Webb University.

With the advisor's consent, courses listed as Electives may be substituted for courses listed under Major Requirements. (See checksheet in back.)

The Bachelor of Science Degree Program In Social Science With a Concentration in Human Services

The human services program is designed within the liberal arts tradition of Gardner-Webb University to prepare students for work in a wide range of social agencies that serve human needs at individual, group, or community levels. The program is designed for students who have completed approximately one-half of their four-year college course work and desire to complete the Bachelor's Degree with the intent of improving their helping skills in an agency in which they are currently employed or of preparing themselves to obtain employment in social service agencies. Although emphasizing the social and behavioral sciences, the program has a strong interdisciplinary orientation.

A student desiring to enroll in the human services program should normally have an Associate's Degree or equivalent in an appropriate area. Successful completion of courses attempted in the liberal arts and social/behavioral sciences is recommended. The equivalent of Gardner-Webb English 101 and 102 are required prerequisites.

A minimum of 128 semester hours is required for graduation. Students transferring from two-year colleges are required to complete a minimum of 64 semester hours of subsequent study in senior colleges or universities, with at least the final 30 semester hours with Gardner-Webb University.

	Sem. Hrs
I. GOAL Core Requirements (see page 13)	33-36
II. Major Requirements	30
III. Electives (as needed)	

Selected with approval of faculty advisor. Credits in religious studies, science, and mathematics must be included. (See check sheet in back.)

Code of Conduct

The Code of Conduct is an official part of Gardner-Webb University and gives life on our campus and in our regional centers a special personality. We believe it represents values necessary for an open educational community. Students who enroll at Gardner-Webb agree to abide by this Code. The Code is outlined in the student handbook. The following is a list of prohibited behaviors:

Alcohol/Drugs

Possessing, consuming, being inebriated (drunk), driving while impaired, selling or distributing alcoholic beverages or illegal drugs on campus or at a Gardner-Webb University off-campus site.

Vandalism

The willful damage to, destruction or defacement of property in general.

Stealing

Unauthorized taking of property or being in possession of stolen property.

Accessory/Accessory after the Fact

Being a party to, witness to or having knowledge of any policy violation which is occurring or has occurred without reporting such violations immediately to the proper authorities.

Lying

Furnishing false information with the intention of deceiving.

Assault

An act or movement which conveys an intention to use force of violence or cause physical injury to another person.

Aggravated Assault

An assault in which there is an intent to inflict injury or an attempt to inflict serious injury which may involve the use of a weapon.

Unauthorized Entry

Breaking and unauthorized entry into any Gardner-Webb University facility.

Hazing

To annoy any student by playing abusive or ridiculous tricks on him/her, to frighten, scold, beat or harass him/her or subject him/her to personal indignity.
(North Carolina Statute: 14:35)

Verbal Abuse or Harassment

Insulting, taunting or threatening communication; defaming of character; indecent language, verbal assaults; derogatory, sexist or racist remarks; or any behavior that puts another member of the university community or guest in a state of fear or anxiety.

Gambling

Illegal gambling, wagering, or betting.

False Reporting

Intentional false reporting of a bomb, fire, or any other emergency.

Obscene, Lewd, Indecent Media Exhibition

The use, display, or exhibition of pornographic magazines, movies, video tape, records, cassettes, or posters.

Demonstrations

The gathering of a group of students for the purpose of a demonstration that is not orderly or peaceful which interferes with the academic process or normal operation of the University.

Aiding/Abetting

Aiding, abetting or conspiring with another person to become involved in prohibited behavior.

Disorderly Conduct

Any disorderly behavior.

Firearms/Explosives/Weapons

The use, possession or distribution at any GWU facility of firearms, explosives, fireworks or knives.

Language

Lewd, obscene, indecent, profane and vulgar language, writing, expression or behavior.

Fair Process

The Student Government Association of Gardner-Webb University includes in its membership all students of the institution. A student charged for violation of campus code regulations is afforded fair process as outlined below:

A student charged with participating in prohibited behavior is granted the following in order to ensure fundamental fairness in the judicial process.

- A. Notice. The student has the right to be informed in writing of the charge(s) against him or her. The notice must provide the charge(s) as well as the specific evidence which resulted in the charge(s).
- B. Procedures. The student has the right to be informed orally or in writing of the judicial procedures.
- C. Right to Counsel. The student has the right to be represented by a person of his/her choice from the University to act as counsel.
- D. Evidence. The student has the right to have dismissed from consideration evidence which resulted from confessions obtained by coercion or deceit and objects or documents obtained as a result of illegal search.
- E. Right to call witnesses. The student has the right to present witnesses from the University to testify in his/her defense.
- F. Hearing. The student has the right to respond to charges before a disciplinary decision is made.
- G. Written report. The student has a right to a letter reporting the result of the hearing.
- H. Appeals. The student has the right to appeal a decision by either a hearing officer or a judicial board for any of the following reasons:
 - (1) irregularity in proceedings
 - (2) punishment inconsistent with the nature of the offense
 - (3) additional evidence not available at the hearing

When a student pleads guilty and a minimum penalty is assessed, the student does not have the right to appeal the decision.

Policy on Academic Honesty

Preamble

As a community of scholars founded upon the ideals of Christianity, Gardner-Webb University expects its students to develop and display a strong sense of academic integrity. As in any community, this institution must be governed by regulations; and like the laws of any community, these rules function best when they are fully understood, accepted and cherished by each and every member of the community. Therefore, all students and faculty members are expected to be familiar with and to base their actions upon the following statements regarding academic honesty.

Student Responsibilities

- 1) Students should recognize that the regulations governing academic integrity exist for the protection of the honest and that dishonesty in an academic setting must not be tolerated, much less condoned.
- 2) Students are responsible for their own work. Any assignment turned in by a student is assumed to be the work of the student whose name appears on the assignment.
- 3) Students are ultimately responsible for understanding a faculty member's instructions for any assignment. If instructions are not clear, students must seek clarification from the instructor.
- 4) Students must understand the definitions of plagiarism and academic dishonesty.
- 5) Students should familiarize themselves with the proper use of citations and quotations in order to avoid accidentally passing off someone else's work as their own.

Faculty Responsibilities

- 1) Faculty must explain all assignments as thoroughly as is reasonable and should address any extraordinary limitations on outside assistance.
- 2) Faculty members should take reasonable precautions in giving tests to ensure that violations do not occur. The fact that a faculty member did not take a specific precaution does not, however, constitute an excuse for any academic dishonesty.
- 3) Faculty must be willing to investigate and, if circumstances warrant, press charges against students suspected of academic dishonesty.
- 4) Faculty members must file an Academic Dishonesty Report any time they charge a student with an infraction.

- 5) Faculty members must seek to be fair in their dealings with students, particularly regarding cases of academic dishonesty, and must realize that no student can be convicted on suspicion alone.

Definition of Academic Dishonesty

A student is dishonest when two circumstances occur:

- (1) The student could reasonably be expected to know that his/her professor would disapprove of some aspect or circumstance of the student's academic work; and (2) the student submits the work to the instructor for evaluation while hiding that particular aspect or circumstance from the instructor. To do so is clearly dishonest because the instructor will evaluate the work as what he/she understands it to be. The student has deceived the instructor by misrepresenting the work, and the evaluation has not been rightly earned.

From another perspective, academic dishonesty may be viewed as the use of unauthorized assistance in any work that is to be evaluated — "unauthorized" meaning that the professor would not approve of the form of assistance and is unaware of its use. The student is being dishonest if he/she deliberately hides this assistance from the instructor while knowing the instructor would not approve of this assistance. If the instructor is unaware of the assistance that has been received, he/she will evaluate the work as being entirely the student's own. Thus, the evaluation has not been fairly earned by the student. Furthermore, any student who knowingly gives unauthorized assistance is also guilty of academic dishonesty.

On tests and examinations academic dishonesty occurs when a student receives any assistance that the professor has not expressly permitted. It may take the form of looking on another student's paper or bringing into the test site any information or materials not expressly permitted by the professor. Both of the above definitions of academic dishonesty apply — the student has misrepresented the test as being entirely his/her own work. Furthermore, the student has received unauthorized assistance.

On research papers, reports and other written assignments a form of academic dishonesty is plagiarism, which is the use of someone else's information or exact words without properly "documenting" or identifying that source. Whenever someone else's exact words are used, those words must be properly punctuated as a quotation and the source fully identified. Also any information and ideas that have been taken from a source other than the student's own personal knowledge — book, article, interview, etc. — must be properly documented, even though the student may be rephrasing the information in his/her own words. A student should not hesitate to consult the professor about any question or uncertainty regarding proper documentation of research information.

A professor may allow and even encourage students to work together on assignments or receive assistance

from other students, other faculty members, other university staff members, friends, family or others. However, if the professor has not expressly allowed such assistance and expects the assignment to be done entirely by the student, to do otherwise would be dishonest. The student should consult the professor if there is any doubt about outside assistance being permitted.

The examples above are not intended to be a full list of cases of academic dishonesty, but they illustrate the definition. Ultimately, academic dishonesty amounts to deliberately hiding something from the professor. So the best advice is this: Whenever there is any doubt, consult the professor.

Procedure for Handling Cases of Academic Dishonesty

When a faculty member suspects a student of academic dishonesty, he/she must investigate the incident as fully as is reasonably possible. If, based upon a thorough investigation of the incident, the faculty member concludes that the student has committed an act of academic dishonesty, the faculty member must present the charges and the evidence to the student in a conference. A student may plead guilty to the charges and thereby waive his/her right to a hearing. The student who pleads guilty agrees to accept whatever penalty the faculty member deems fitting (ranging from a warning and a lowered grade on the assignment to assigning an "F" for the course). An Academic Dishonesty Report indicating the offense and the penalty assessed for the infraction (or the student's intention to contest) must be signed by both the faculty member and student and filed with the office of the Associate Vice President for Student Affairs, or Dean of Special Studies if the student is enrolled with the GOAL program. The Academic Dishonesty Report must be filed within one week of the faculty member's conference with the student. Except in the cases where the professor merely issues a warning, the Associate Vice President for Student Affairs or Dean of Special Studies will send a copy of the Academic Dishonesty Report to the Registrar's Office.

The case is closed at this point, unless one or both of the following occur:

- 1) the student wishes to contest the faculty member's charges on the grounds of inadequate or newly discovered evidence, or unfair treatment. Such an intention must be filed, in writing, with the Associate Vice President for Student Affairs (or Dean of Special Studies for students in the GOAL program) within one week of conference with the faculty member (i.e. the date listed on the Academic Dishonesty Report). This intention to contest should state as fully and plainly as possible the grounds for contesting the charge.
- 2) or the Associate Vice President for Student Affairs or Dean of Special Studies determines that this is the student's second offense.

In either case, the Associate Vice President for Student Affairs (or Dean of Special Studies for GOAL students) will contact the members of the Academic Judicial Board to review the evidence in the case. The Academic Judicial Board shall include the Dean of Special Studies (or the appointed representative thereof) for GOAL students or the Associate Vice President for Student Affairs (or the appointed representative thereof) for other students, the Associate Vice President for Academic Affairs (or the appointed representative thereof) and the President of Alpha Chi.

In the case of a contested charge, the Board will review the case and vote whether or not the case merits a hearing. If the Academic Judicial Board decides that the student has no grounds to contest the faculty member's charges, the instructor may assess whatever penalty he/she deems fitting as described under Punishments: First Offense. If the Board determines that the faculty member's charges have no basis, all charges are dropped and all copies of the Academic Dishonesty Report are destroyed.

Should the Board determine that the case merits a hearing, or if the student is charged with a second offense, the Academic Judicial Board will summon both the faculty member and the student to appear before it in a full hearing. At such hearing both the student and the faculty member may present evidence regarding the charges. In accordance with University policies, students may ask anyone from within the University community to appear on their behalf at the hearing. Members of the Academic Judicial Board are expected to hear the case objectively and decide the case based on the presentation of evidence.

The Board may support or dismiss the faculty member's charges. Should it find the student guilty of a second offense, the Board will levy punishments (see below) against the student in addition to those imposed by the faculty member, and may do so in the case of a contested first offense.

A student convicted of a second offense by the Academic Judicial Board may appeal the decision to the Vice President for Academic and Student Affairs, but only on the basis of additional evidence unavailable at the Board hearing, improper procedure or a punishment inconsistent with the offense. A faculty member has the right to appeal a Board decision only on the grounds of improper procedure or a punishment inconsistent with

the violation. Such an appeal must be filed, in writing, within 24 hours of the Board's decision. The Vice President for Academic and Student Affairs may decide to hear the appeal or to uphold the Board's decision. The Vice President's decisions are final.

Punishments

First Offense

Punishment for a first offense may range from penalizing the student's grade on the specific assignment and issuing a warning (plus submitting the Academic Dishonesty Report as a written record of the violation) to assigning the student a failing grade for the course.

Second Offense

Punishment for a second offense may range from academic probation for lesser offenses on minor assignments to suspension or expulsion for extensive dishonesty on tests, exams or major papers. The Academic Judicial Board should base, in part, its determination of the severity of the punishment upon the severity of the first infraction. Any student convicted of a second offense will receive a failing grade for the course and a permanent indication on the transcript of the conviction for academic dishonesty. Students guilty of any second offense will be ineligible for any academic honors.

Third Offense

Any student convicted of a third offense of any kind will be immediately and permanently expelled from the University with the action so noted on the student's transcript.

Repeating Courses In Which Academic Dishonesty Occurred

Students are allowed to retake courses they fail due to academic dishonesty; however, the indication of the conviction on the transcript will be permanent and the course hours attempted will continue to be calculated in figuring the student's grade point average.

Compliance Statement For The Drug-Free Schools and Communities Act Amendments

Gardner-Webb University supports and is fully committed to the concept of a drug- and alcohol-free campus and community. In order to comply with the Drug-Free Schools and Communities Act Amendments of 1989, Gardner-Webb publishes the following and makes it available:

- (1) The unlawful manufacture, distribution, dispensing, possession or use of controlled substances such as, but not limited to, the following: Narcotics (heroin, morphine, etc.) Cannabis (marijuana, hashish, etc.) Stimulants (cocaine, diet pills, etc.) Depressants (tranquilizers, etc.) Hallucinogens (PCP, LSD, "designer drugs," etc.) Designer (MDA, MDA-known as "ecstasy", ice, etc.) Alcohol is prohibited by students on Gardner-Webb University property or as any part of the university's activities. As a condition of enrollment, Gardner-Webb University students will abide by these terms.
- (2) Gardner-Webb will impose disciplinary sanctions on students who violate the terms of paragraph 1, above. Upon conviction, the appropriate disciplinary action, up to and including expulsion from the University and/or satisfactory participation in a drug and alcohol abuse assistance or rehabilitation program approved for such purposes by a Federal, State, or local health, law enforcement, or other appropriate agency, will be taken. More specific penalties are outlined in the following publications: Gardner-Webb University student handbook, Gardner-Webb University Special Studies Bulletin, Gardner-Webb University Graduate catalog. Violations may also be referred to the appropriate civil authorities for prosecution under local, state, and federal law.
- (3) Local, state, and federal laws prohibit the unlawful possession, and distribution of illicit drugs and alcohol. The applicable legal sanctions for various offenses are listed in the North Carolina Criminal Law and Procedure book, a reference copy of which is maintained by the Department of Safety and Security.
- (4) A booklet describing the health risks associated with the illicit drugs and abuse of alcohol is made available to all students. Additional information and individual counseling is available through the University's Counseling Center, if necessary, and at the student's expense, referral can be made to an outside agency.

Alcohol possession and/or consumption on campus locations

- 1st offense - \$75 fine.
- 2nd offense - \$100 fine, attend alcohol education program at the student's expense, disciplinary probation.
- 3rd offense - suspension from the university.

Being Legally intoxicated or under the influence of drugs

- 1st offense - \$100 fine, attend alcohol education program at the student's expense, disciplinary probation.
- 2nd offense - suspension from the university.

Distribution of alcohol to a minor

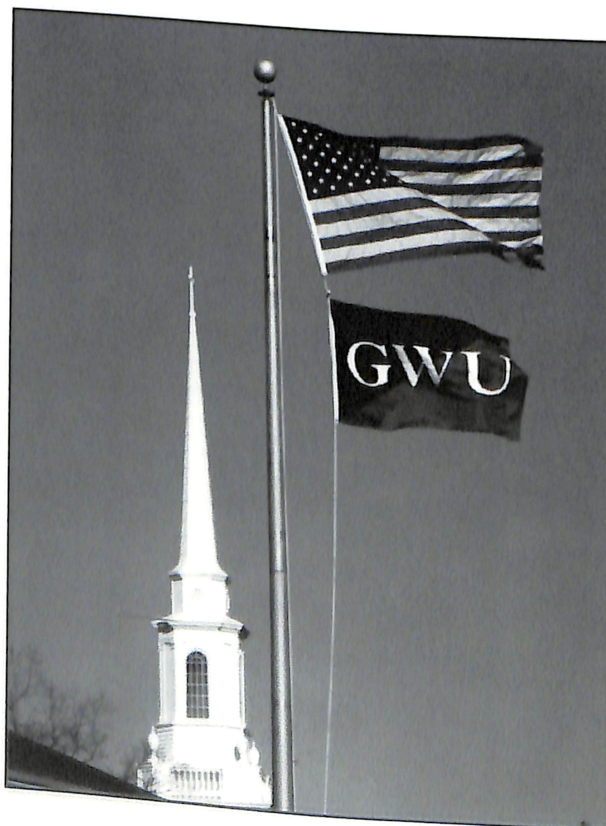
- 1st offense - suspension from the university.

Simple possession and/or use of illegal drugs

- 1st offense - \$100 fine, drug education program, disciplinary probation.
- 2nd offense - suspension from the university.

Distributing drugs illegally

- 1st offense - suspension from the university.



Course Descriptions

After the description of each course three numbers will appear (e.g., 3-0-3). The first digit designates the required classroom hours per week; the second digit, required laboratory hours per week; the third, semester hours credit.

Accounting 313, 314, Intermediate Accounting I & II

The theory of accounting as applied to financial and managerial accounting. 2-0-3

Note: Students may either transfer credit for Intermediate Accounting I or II from the senior college level or may qualify for transfer credit by receiving a grade of B or better in the course(s) and scoring at least 75 on a qualifying examination administered by the Broyhill School of Management.

Accounting 360, Accounting Theory

A comprehensive review of generally accepted accounting principles. Examines both promulgated accounting standards and nonpromulgated principles in use today.

2-0-3.

Accounting 370, Governmental and Nonprofit Accounting

An examination of the principles of governmental accounting and nonprofit accounting to include classification of accounts, budgeting, and financial reporting for state and local governments and nonprofit organization. 2-0-3.

Accounting 435, Advanced Accounting

Accounting for partnerships, insurance, corporate consolidations, and government. 2-0-3.

Accounting 450, Auditing

Principles, techniques, procedures, and legal responsibility of auditors. 2-0-3.

Art 307, Art Appreciation for the Adult Learner

A survey course involving encounters with a variety of pieces of visual art, including an overview of our civilization as reflected in art. 2-0-3.

Biology 335, Pathophysiology

Study of alterations in normal body structure and function associated with various disease processes. 3-0-3.

Business Administration 300, Legal Environment of Business

The course is designed to cover both the public and private regulation of business. Some of the topics covered are environmental law, contract law, agency, partnerships, and corporations. 2-0-3.

Business Administration 305, Quantitative Methods for Business

Explores the use of quantitative methods for decision analysis. Topics include linear programming, sensitivity

analysis, integer and goal programming, queuing models and simulation. 2-0-3.

Business Administration 312, Financial Management

Principles governing financial operations and financial management of business enterprises, profit planning, liquidity versus profitability, capital budgeting, and working capital management. 2-0-3.

Business Administration 318, Principles of Marketing

A comprehensive analysis of the marketing system and the marketing process. 2-0-3.

Business Administration 325, Business Communications

Language skills for oral and written communications. 2-0-3.

Business Administration 395, Campus New York

New York business/career visit enables students to learn, through direct contact with some of the nation's best-known business firms, how textbook theory is put into practice. The week-long visit also provides opportunities for investigating career possibilities. Offered spring semester. Lecture-Travel-1.

Business Administration 396, International Travel

The course provides the student an opportunity to expand their business and cultural horizons by visiting different international cities and countries. Lecture travel 1.

Business Administration 480, Senior Seminar in Business: Business Policy

A case study approach designed to apply areas of management, accounting, finance, and economics to contemporary business problems. Recommendation: Senior standing. 2-0-3.

Business Administration 495, 496 Independent Study

Supervised study program in a field of special interest. Prerequisite: approval of instructor, department chair, and the Dean of Special Studies. 0-0-3.

Criminal Justice 410, A Philosophy of Criminal Justice

Major focus: Punishment and alternatives for dealing with law violation and relating underlying ideas, such as responsibility and insanity. Central to this investigation will be a concern for the justification of punishment, legitimacy of alternatives to punishment, justification for considering illegal acts as products of disease, and the reconcilability of a system of punishment with a deterministic view of human behavior. 2-0-3.

Criminal Justice 420, Administrative Decision Making

An advanced course in police administration decision making with considerable emphasis on management styles and their effect on the operation of the police force and related criminal justice agencies. 2-0-3.

Criminal Justice 430, Criminal Justice Theory and Research

A discussion and practical application in operations research as it applies to police department, prosecution management, court scheduling, corrections recidivism, probation and parole. The common theme is the use of quantitative analysis to understand phenomena, to solve problems, and to provide policy guidance. 2-0-3.

Criminal Justice 497, 498, Internship

Designed for students enrolled full-time in the criminal justice program, to enhance academic experience by providing an opportunity to acquire a working knowledge of the practical aspects of the criminal justice system. 0-0-3.

Economics 301, Money and Banking

Analysis of Federal Reserve System and monetary policy, the role of money in determination of national income, role and development of commercial banks, and the basic elements of international finance. 2-0-3.

Economics 311, Labor and the Economy

Analysis of the labor market, unemployment, labor laws, union organization, and the theory of wages. 2-0-3.

Economics 420, Investments

- Investment goals, strategies, and policies for individual investors are examined. Relationships of security investments to capital formation, changing rates of interest and price levels, inflation, and the business cycle are also examined. Prerequisite: Business Administration 312. 2-0-3.

English 300, Composition and Literary Interpretation

Process writing with study of literature for appreciation, understanding, and generation of ideas for writing projects in expository, analytical, critical, and research modes. 2-0-3.

Prerequisite: English 101 or its equivalent.

English 310, British Literature Survey I

Representative writers from the beginning of British Literature to the eighteenth century. 2-0-3.

English 312, British Literature Survey II

Representative writers of British Literature from the eighteenth century to the present. 2-0-3.

English 331, American Literature Survey I

Representative writers from the American Colonial period to Whitman, mid-nineteenth century. 2-0-3.

English 332, American Literature Survey II

Representative writers of the United States from Walt Whitman to the present. 2-0-3.

French 300, Aspects of French Culture and Language

An introduction to selected aspects of French Culture, including the rudiments of the French language. No prior knowledge of French is required. 2-0-3.

Health Education 322, Helping Relationships for Health Science

A study dealing with human relations skill training using the Gazda Model as a base. 2-0-3.

Health Education 401, Drug and Alcohol Education

An introduction to the sociological, cultural, psychological and physical implications associated with the use and abuse of substances. 2-0-3.

Health Education 402, Sexuality/Sex Education

An introduction to the study of basic elements and issues of human sexuality. Central to this course is personal knowledge and the ability to communicate effectively with children, family and others in the context of teaching and personal relevancy. 2-0-3.

Health Education 431, Problems in Health Education

Advanced study of personal and community health problems, environmental health, family living and mental and emotional health. 2-0-3.

Health Management 300, Introduction to Health Management

An introduction to the health care delivery system in the United States with some comparisons to systems in other countries. Health systems at the Federal, state, and local level will be discussed, as well as differences between the public and private sectors. 2-0-3.

Health Management 301, Accounting for Health Management

Builds on prerequisite accounting courses. Accounting for costs and revenues, patient accounting systems, payroll systems, and financial reporting. Measurement of inputs and outputs of the health care system. 2-0-3.

Health Management 303, Finance for Health Management

Financing of health care delivery systems, financing planning and project evaluation. Present value concepts and advanced capital budgeting techniques. 2-0-3.

Health Management 304, Economics of Health Care

Builds on required Economics courses. Supply and demand for health care services in the United States. The influence of environmental, political, economic, and social factors on the quantity, quality and price of health care services. The role of health care services in the economy. Factors of production of health care services. 2-0-3.

Health Management 307, Strategic Planning and Marketing for the Health Manager

The application of marketing principles to the health care service industry is emphasized. Objective establishment, strategy, planning, and evaluation will be stressed. 2-0-3.

Health Management 308, Health Policy Seminar

A view of health care agencies from the perspective of the competitive struggle for public support. Emphasis on the body politic as it relates to management problems. Student will relate basic management techniques in solving management problems. Prerequisite: Junior level Health Management courses. 2-0-3.

Health Management 410, Health Care Law Seminar

Provides an overview of the interrelationship of the legal system with the structure and function of the health care system in its various forms and settings. Also addresses ethical dilemmas relating to individual patient/client decisions. 2-0-3.

Health/Physical Education 338, Health Maintenance, Promotion and Wellness

An examination of the concepts, attitudes, and skills that contribute to personal health and physical fitness. Physical activity involved. 2-0-3.

History 201, Survey of United States History to 1877

Social, intellectual, economic, and constitutional foundations of the United States and its people. 2-0-3.

History 202, Survey of United States History since 1877

Historical elements which have influenced modern American society. 2-0-3.

History 301, Issues in Western Civilization, Pre-history to 1715

Beginning with the earliest times, the course covers the civilization of Egypt, Mesopotamia, Greece, Rome, Medieval and Early modern periods. Concludes with 1715. 2-0-3.

History 302, Issues in Western Civilization, Since 1715

Beginning with 1715, this course presents a perspective of the last three centuries of western history. 2-0-3.

History 319, The United States in the Twentieth Century

A study formulated to emphasize events, movements, and trends in modern America and to examine the functioning of constitutional principles. 2-0-3.

History 495, 496 Independent Study

Open to juniors and seniors who request and are given permission to do a guided reading and/or student-initiated research course that includes a written project/paper. Prerequisite: approval of instructor,

department chair, and the Dean of Special Studies. 0-0-3.

Human Services 300, Ethical Issues in the Helping Professions

A detailed examination of selected current ethical issues in the human services field. 2-0-3.

Human Services 301, Treatment Modalities

A survey of theories and procedures appropriate for use with clients of community agencies. 2-0-3.

Human Services 302, Group Dynamics

An introduction to group structure and process and analysis of their effects on individuals. 2-0-3.

Human Services 320, Introduction to Clinical Practice

An introduction to the practices, procedures, and techniques involved in a mental health setting. 2-0-3.

Human Services 400, Legal Issues in the Helping Professions

A critical examination of current legal issues facing the helping professions. 2-0-3.

Human Services 491, Seminar

A synthesis and integration of previous course work following a problems approach. 2-0-3.

Human Services 497, 498, Internship

Designed for students enrolled full-time in the human services program who do not have professional experience. 0-0-3.

Internship 420, Internship in Business

A course designed to assist in effectively integrating academic preparation and practical career experiences. This course is offered every term and should be taken during final semester. Prerequisite: Permission of instructor. Senior standing is recommended. 0-0-1.

Management 316, Applied Management Concepts

A systems approach to integration of theory and practice in the contemporary organization. 2-0-3.

Management 330, Industrial Supervision

Explores the process and techniques of accomplishing organizational objectives through others. Topics include effective use of praise and rewards, effective discipline, leadership, use of feedback, behavior modification, and human relations. 2-0-3.

Management 400, Human Resource Management

Principles and practices regarding the recruitment, selection, development, evaluation, compensation, and proper recognition of employees within organizations. Recommended Prerequisite: Management 316. 2-0-3.

Management 403, Human Behavior in Organizations

The application of human behavior principles common to many types of organizations, specifically busi-

ness and industry. Motivation, leadership, followership, and human problems are analyzed. 2-0-3.

Management 410, Small Business Management

A practical course designed to familiarize the student with the application of economic and managerial techniques of the small business. These techniques include entrepreneurship, location analysis, forms of ownership, financing alternatives, accounting practice, marketing and advertising techniques, and inventory control. 2-0-3.

Management 416, Production and Operations Management

Explores the management concerns of cost, quality, and quantity in the production systems of manufacturing companies, material requirements, planning, break-even charts, plant location, present worth analysis, safety, job enrichment, and sequential sampling. Recommended Prerequisites: Business Administration 305 and Management 316. 2-0-3.

Management 422, Marketing Management

Topics covered include marketing research, public relations, and marketing channels. 2-0-3.

Management 425, Advanced Business Communications

Emphasis on business analysis, report writing, formal and informal presentations, public relations, and internal and external communications. 2-0-3.

Management Information Systems 371, Structured Systems Analysis and Design

Advanced coverage of the strategies and techniques of structured systems process. The course will cover development of information systems. 2-0-3.

Management Information Systems 423, Programming Languages

Overview of programming languages with emphasis on modern approaches to programming languages and their applications. 2-0-3.

Management Information Systems 432, Information Systems Planning

An introduction to the financial, the technical, and strategic information systems process. The course will cover the development of information systems. 2-0-3.

Management Information Systems 433, Database Program Development

A course emphasizing software design and programming in a database environment. For MIS majors only. 2-0-3.

Management Information Systems 471, Applied Software Development

A capstone systems course integrating the knowledge and capabilities gained through the other computer-related courses in the curriculum within a comprehensive system development project. 2-0-3.

Management Information Systems 485, Topics in Management Information Systems

Offered as demand warrants, this course offers electives such as Distributed Data Processing, Advanced Database, Information Resource Management, Information System Planning, and Artificial Intelligence. Since topics will be different, the student may be able to take the course more than once. 2-0-3.

Mathematics 307, College Algebra

Axiomatic properties of real numbers, sets, functions, equations, inequalities, progressions, permutations, and combinations. 2-0-3. Recommended: High school advanced algebra or community college beginning algebra prior to enrollment in this course.

Mathematics 309, Finite Mathematics

A study of topics related to elementary matrix algebra, systems of equations, systems of inequalities, linear programming, and mathematics of finance with applications in the behavioral, managerial, and social sciences. 2-0-3. Recommend: High school or community college algebra prior to enrollment in this course.

Mathematics 316, Fundamentals of Statistics and Probability

Basic statistical analysis. Introductory principles of probability with applications. 2-0-3. Recommend: High school or community college algebra prior to enrollment in this course.

Music 320, Survey of Music

A survey of music from antiquity to the present day with listening appropriate to the period studied. Not offered to the student who has successfully completed Music 125, Music Appreciation, or its equivalent. 2-0-3.

Nursing 300, Concepts in Professional Nursing

An introductory course for transition to the role of the professional nurse. The areas covered include evolution of nursing, professional socialization, theoretical base for practice, and components of professional nursing practice. Pre- or Co-requisite: Nursing 307. 3-0-3.

Nursing 301, Research in Nursing I

Introduces nursing research as a component of professional nursing practice. Emphasis is placed on the role of the professional nurse in interpreting research findings for applicability to nursing practice and in identifying research problems in nursing practice. Pre- or Co-requisites: Nursing 300, Statistics. 3-0-3.

Nursing 302, Health Assessment

Holistic health assessment skills developed and practiced. Emphasis is on health promotion and protection of the individual throughout the life span. Pre- or Co-requisite: Nursing 300. 3-3-4.

Nursing 307, Communications/Computers in Nursing

Introductory course that combines principles of effective presentation, both oral and visual, as well as an introduction to basic computer skills. The course is introduced to the student with an overview of the communication process. Prerequisites: English 101 and 102.

3-0-3.

Nursing 401, Community/Mental Health Nursing

Concentration is on family community health nursing and family mental health nursing. Content covered includes the roles and setting of the community health nurse with individuals, families and aggregates; concepts essential to practice, health promotion/protection, health education and counseling; and assessment of resources. Prerequisites: Political Science 302, Sociology 340. Pre- or Co-requisites: An environment or environmental health course, Nursing 301 and 302. 3-6-5.

Nursing 403, Leadership/Management in Nursing

A synthesis of leadership/management theories within health care agencies and organizations. Emphasis is placed on political structures, planning, change theory, group dynamics, research, and their impact on the role of the professional nurse. Pre- or Co-requisite: Nursing 401. Prerequisite: A 300 or 400 level management or health management course. 2-0-3.

Nursing 404, Health Restoration

Emphasis on holistic nursing across the life span for clients experiencing a critical upset or complex disruption. The role of the professional nurse in relation to the restoration-rehabilitation process is incorporated. Prerequisite: Biology 335. Pre- or Co-requisite: Nursing 403. 2-6-4.

Nursing 405, Research in Nursing II

Formulation and development of a researchable clinical problem by the student. Prerequisite: Nursing 301. 3-0-3.

Nursing 406, Advanced Nursing Research Elective

Design and implementation of a clinical research study to answer the research question formulated and developed in Nursing 405. Prerequisite: Nursing 405. 0-0-4.

Nursing 409, Senior Seminar

Analysis of contemporary issues related to the practice of professional nursing. Prerequisites: Nursing 401 and 405. Pre- or Co-requisites: Nursing 403 and 404. 2-0-2.

Nursing 495, Nursing Elective

Development and implementation of a learning contract in area of student's interest. Time and credits (1-4 hours) are determined in the semester prior to the term in which the study begins. Level II, Seniors. Prerequisite: Nursing 300. 0-0-1, 0-0-2, 0-0-3, or 0-0-4.

Political Science 302, United States Government

A comprehensive presentation of the principles of American constitutional government, and a behavioral analysis of the institutions and processes of the national and state governments and the Federal system. 2-0-3.

Political Science 304, State and Local Government in the U.S.

A study of the problem of inter-governmental relationships and administrative management in state, county, and municipal government. 2-0-3.

Political Science 314, Judicial Process

A study of the judicial process in the United States including pertinent court decisions and a general review of the administration of justice in our society. 2-0-3.

Political Science 315, Civil Liberties

An examination of the philosophical basis and legal status of basic liberties in the U.S. 2-0-3.

Political Science 495, Independent Study

Independent research paper done on a topic agreed upon by the professor. 0-0-1.

Psychology 305, Psychology of Personality

A survey of the major theories of personality, with particular emphasis upon experimental studies and research procedures in the study of personality. 2-0-3.

Psychology 380, Personal Assessment and Adjustment

An exploration and analysis of life goals, lifestyle management, identity formation, and adjustment strategies. 2-0-3.

Psychology 396, Introduction to Statistics

An introductory approach to descriptive and inferential statistics designed to develop an understanding of basic statistical concepts, statistical significance, statistical inference, and hypothesis testing. 2-0-3.

Psychology 401, Psychopathology

Survey and analysis of the major mental disorders, interpretation, and theories of therapy, including the relationship of abnormal behavior to social norms. 2-0-3.

Psychology 402, Introduction to Counseling

The study of basic theories and functions of counseling. Laboratory emphasis will be upon development of a personal counseling philosophy and its application. 2-0-3.

Psychology 406, Psychology of Exceptionality

A study of marked superiority or inferiority to physical, mental, emotional and social norms. 2-0-3.

Psychology 444, Psychological Measurement and Appraisal

An introduction to psychological measurement, with emphasis on the measurement of intelligence,

achievement, personality, interests, and special aptitudes. 2-0-3.

Psychology 493, Seminar in Psychology

Typical seminars are Psychology and Law and the Psychology of Women. Others are offered upon sufficient demand. 2-0-3.

Science 302, Physical Science

Introduction of structure and behavior of matter. Survey of geology, meteorology, and astronomy, with emphasis on underlying physical and/or chemical principles, and practical applications of these principles. Demonstration. 2-0-3.

Science 303, Human Biology

An introduction to the biology of the human organism with emphasis on contemporary issues in human biology as well as traditional structure and function of major body systems. 2-0-3.

Science 322, Environment

Survey of principles of ecology with emphasis on human impact on the environment. Literature of ecological movement in the U.S. since 1960. Weekend field trips may be required. 2-0-3.

Social Science 305, Global Understanding

An introduction to the major economic, social, political, diplomatic, and environmental trends in the world since 1945. Geography is emphasized in the course. 3-0-3.

Sociology 310, Social Psychology

A study of the interaction between the individual and the group, and the influence of each on the other. 2-0-3.

Sociology 311, Social Research Methodology

The scientific method applied to social phenomena: formulating and testing hypotheses, techniques for collecting data, measuring social variables, interpreting research findings. The scientific method as applied to social sciences will be explored in the latter part of the course through student participation in the design and analysis of a survey. 2-0-3.

Sociology 313, Sociology of Deviant Behavior

Introduction to theories of deviant behavior. Description and explanatory approaches to kinds and amounts of deviance in contemporary America; social change, anomie and social disorganization theories; the process of stigmatization; formal and informal societal responses to deviance and the deviant. Recommended Prerequisite: Introduction to Sociology or Psychology. 2-0-3.

Sociology 320, Cultural Anthropology

A study of the nature and growth of culture in primitive and contemporary non-industrial societies. 3-0-3.

Sociology 340, Social Change

An examination of social systems within the framework of functional and conflict theory with particular emphasis upon the planning of social change. 2-0-3.

Sociology 356, Sociology of Religion

Religion analyzed as a social institution, with particular reference to the relationship between religious and non-religious spheres of society, the structure of religious organizations, and the sociology-psychology of religious behavior. 3-0-3.

Sociology 400, Race Relations

A study of present-day racial and cultural minorities with emphasis on scientific facts about race and on changing attitudes and policies. 2-0-3.

Spanish 300, Aspects of Hispanic Culture and Language

An introduction to selected aspects of Hispanic culture, including the rudiments of the Spanish language. No prior knowledge of Spanish is required. 2-0-3.

1995 Board of Trustees

Officers of the Corporation

Hobart C. Smith, L.H.D., Chairman
Lloyd C. Bost, L.H.D., Vice Chairman
H. Gene Washburn, M.D., Secretary
W. David Ellis, Treasurer of the Corporation
M. Christopher White, Ph.D., President
Joe Mauney, J.D., Attorney
A. Frank Bonner, Ph.D., Assistant Secretary
Donnie O. Clary, Assistant Treasurer

Board of Trustees

Terms Expiring December 31, 1995

Hoyt Q. Bailey, Shelby, N.C.
Lloyd C. Bost, L.H.D., Shelby, N.C.
Wyndolyn R. Hollifield, Winston-Salem, N.C.
A. Grayson Kellar, Gastonia, N.C.
Dan W. Moore, Jr., Boiling Springs, N.C.
Herbert W. Price, Gastonia, N.C.
Dorothy S. Seagraves, Charlotte, N.C.
Hobart C. Smith, L.H.D., Charlotte, N.C.

Terms Expiring December 31, 1996

John L. Bethea, Charlotte, N.C.
George Blanton, Jr., Shelby, N.C.
Clifford E. Hamrick, Boiling Springs, N.C.
John H. Hendrick, Shelby, N.C.
Nancy L. Kistler, Charlotte, N.C.
Eleanor Y. McCall, High Point, N.C.
John T. McCulloch, Charlotte, N.C.
H. Gene Washburn, M.D., Boiling Springs, N.C.
William J. Williams, Shelby, N.C.

Terms Expiring December 31, 1997

Ruby Moss Alexander, Kings Mountain, N.C.
Ellen Baxter Beam, Fallston, N.C.
Boyce F. Grindstaff, Forest City, N.C.
E. Thomas Hardin, Forest City, N.C.
Harvey L. Montague, Sr., Raleigh, N.C.
J. Donald Norris, Statesville, N.C.
William S. Rouse, Gastonia, N.C.
Carl M. Spangler, Jr., Shelby, N.C.
Helen M. Stinson, M.D., Greensboro, N.C.

Terms Expiring December 31, 1998

W. Garland Bolejack, Shelby, N.C.
E. Udean Burke, Newton, N.C.
Tommy R. Causby, Belmont, N.C.
C. Lorange Henderson, L.H.D., Morganton, N.C.
Thomas E. Philson, Charlotte, N.C.
James E. Putnam, Shelby, N.C.
James E. Robbins, Forest City, N.C.
John E. Roberts, L.L.D., D. Lit., L.H.D., Greenville, S.C.
Wade R. Shepherd, Hickory, N.C.

Trustee Emeritus

W. Wyan Washburn, M.D., L.H.D., Boiling Springs, N.C.

Ex-Officio

Bernard H. Parker, Past Board Chairman
Leland A. Kerr, Director of Missions, Kings Mountain Baptist Association
Harrison Dean, Youth Trustee
Trena Roberson Martelon, Youth Trustee

Administration and Regular GOAL Faculty

M. Christopher White, Ph.D.

President of the University
A.B. Mercer University; M.Div., The Southern Baptist
Theological Seminary; Ph.D., Emory University.

A. Frank Bonner, Ph.D.

Provost and Senior Vice President; Professor of
English
B.A., Furman University; M.A., University of Georgia;
Ph.D., University of North Carolina at Chapel Hill.

Gilmer W. Blackburn, Ph.D.

Vice President and Dean of Academic Affairs;
Professor, History
A.A., Gardner-Webb University; B.A., M.A., Wake
Forest University; Ph.D., University of North Carolina
at Chapel Hill.

Evan M. Thompson, Ed.S.

Dean of Special Studies; Director of Summer School
Assistant Professor, Business
B.A., Warren Wilson College; M.A., Ed.S.,
Appalachian State University, additional study;
University of South Carolina.

Emily W. Brown, M.B.A.

Coordinator GOAL Health Management Program.
Instructor, Business B.S., Gardner-Webb University;
M.B.A., Western Carolina University.

T. Eugene Carpenter, Ed.D.

Associate Professor, Psychology,
B.S., Clemson University; M.A., Appalachian State
University; Ed. D., North Carolina State University.

F. Keith Griggs, Ed.D.

Coordinator, GOAL Business Programs; Chair,
Broyhill School of Management, Professor, Business
Administration and Management Information
Systems.
B.S., M.A., Appalachian State University; M.Ed.,
University of North Carolina at Charlotte; Ed.S.,
Western Carolina University; Ed.D., Virginia
Polytechnic Institute and State University

Frederick Guyette, M.L.S.

GOAL Librarian
B.A., Florida State University; M.A., Pacific School of
Religion; M.L.S., Florida State University.

Barry E. Hambright, Ph.D.

Assistant Academic Dean, Coordinator GOAL
Criminal Justice and Human Services Programs;
Professor, History and Political Science.
A.A., Gardner-Webb University, B.A., Carson-
Newman College; M.A. University of Massachusetts;
Ph.D., University of South Carolina.

Marcia Miller, Ph.D.

Campus BSN Program Chair; Associate Professor,
Nursing; B.S.N., University of Michigan; M.S.N.,
University of North Carolina at Chapel Hill; Ph.D.,
University of Texas at Austin.

Martha E. Owens, M.A.

GOAL Business Advisor; Instructor in English; B.A.,
M.A., Gardner-Webb University.

Wanda C. Stutts, M.S.N.

Davis School of Nursing Chair; Assistant Professor,
Nursing; B.S.N., M.S.N., University of North Carolina
at Charlotte; Ph.D. Candidate, University of North
Carolina at Chapel Hill.

Stephen L. Baglione, Ph.D.

Assistant Professor, Business and Management,
B.A., Queens College, New York; M.A., Ph.D.,
University of South Carolina.

Raquel Barreto, M.A.

Assistant Professor of Spanish
B.A., Central Wesleyan College; M.A., Ohio
University.

Rebecca Jean Beck-Little, B.S.N.

Instructor, Nursing
ASN, Western Piedmont Community College, BSN,
MSN, University of North Carolina at Charlotte.

Susan C. Bell, M.A.

Assistant Professor, Art
B.A. Mary Baldwin College; M.A. Presbyterian School
of Christian Education, M.A., University of South
Carolina.

Kevin Binfield, Ph.D.

Assistant Professor, English
B.A., Nebraska Wesleyan University; M.A., Ph.D.,
University of Nebraska

Robert R. Blackburn, Ed.D.

Professor, Health Education and Physical Education
A.A., Gardner-Webb University; B.S., Erskine College;
M.A., Ed.D., George Peabody College for Teachers.

I. Glenn Bottoms, Ph.D.

Professor, Economics and Management Information
Systems
B.A., Emory University; M.A., University of Ottawa;
Ph.D., Georgia State University; post doctoral study,
George Washington University.

Joyce C. Brown, Ph.D.

Chair, Department of English Language and
Literature; Professor, English
B.S., M.A., Appalachian State University; Ph.D.,
University of Southern Mississippi; additional study,
Appalachian State University.

Leslie M. Brown, Ph.D.

Professor, Biology B.S., M.A., Appalachian State University; Ph.D., University of Southern Mississippi.

Barbara N. Burkett, Ph.D.

Professor, Biology B.S. North Carolina State University; Ph.D., Western Reserve University

Janie M. Carlton, Ed.D.

Professor, Nursing
B.S., Lenoir-Rhyne College; M.N., Emory University;
Ed.D., North Carolina State University.

Wallace R. Carpenter, Ed.S.

Associate Professor, Management Information Systems
B.S., M.A., Appalachian State University; Ed.S., Western Carolina University; additional study, University of North Carolina at Chapel Hill; Western Carolina University.

David M. Carscaddon, M.A.

Assistant Professor, Psychology
B.A., University of North Carolina at Asheville; M.A., Morehead State University; additional study, University of South Carolina.

Gary Chandler, Ed.D.

Associate Professor, Health Education and Physical Education
B.S., M.A., Appalachian State University; Ed.D. University of North Carolina at Greensboro.

Penelope E. Couch, M.B.A.

Director of Admissions, Instructor, Business, Graduate Programs; B.S., M.B.A., Gardner-Webb University.

Deborah W. Cody, M.S.N.

Assistant Professor, Nursing
B.S.N., M.S.N., University of North Carolina at Chapel Hill.

James E. Crawley, B.S.

Dean, Broyhill School of Management; B.S., Clemson University.

Alice R. Cullinan, Ph.D.

Chair, Department of Religious Studies and Philosophy; Professor, Religious Education, Religion B.A., Carson-Newman College; M.R.E. Ph.D., Southwestern Baptist Theological Seminary.

Benjamin F. Davis, M.Div.,

Assistant Professor, Psychology
B.A., University of North Carolina at Charlotte; M.Div., Pastoral Care, Duke University Divinity School; additional studies in Psychology, Drug Abuse.

Anthony Finley Eastman, Ph.D.

Chair, Department of Social Sciences; Professor, History
B.A. Union University; M.A., Memphis State University; Ph.D., University of Southern Mississippi.

Donna S. Ellington, Ph.D.

Assistant Professor, History
B.A., M.A., Appalachian State University, Ph.D., Duke University.

Terry L. Fern, D.M.A.

Chair, Department of Fine Arts; Professor, Music
B.M., Oklahoma Baptist University; M.M., University of Louisville; D.M.A., University of North Texas; additional study Oberlin Conservatory of Music, Oberlin College.

Roger G. Gaddis, Ph.D.

Professor, Psychology
B.A., University of North Carolina at Charlotte; M.A., University of Tennessee; Ph.D., University of South Carolina; additional study, Appalachian State University.

Earl H. Godfrey, Jr., M.B.A.

Instructor, Accounting A.S., Spartanburg Technical College;
B.S., University of South Carolina at Columbia; B.S., University of South Carolina at Spartanburg; M.B.A., Winthrop University.

D. Larry Gregg, Ph.D.

Associate Professor of Theology and Church History, School of Divinity.
B.A., Jacksonville State University; M.A., Sanford University; MDiv, Ph.D., The Southern Baptist Theological Seminary.

Nell S. Griggs, M.A.

Assistant Professor, Health Education, Physical Education
A.B., Lenoir-Rhyne College; M.A. Appalachian State University; additional study, Western Carolina University; University of North Carolina at Charlotte; Gardner-Webb University.

J. Russell Hardin, Ph.D., C.P.A.

Assistant Professor, Accounting
A.A., Isothermal Community College; B.S., M.A., Appalachian State University. Additional Study, Clemson University. University of South Carolina. Ph.D., University of Mississippi.

Libby W. Hart, M.A.

Assistant Professor, Mathematics and Computer Science
B.A., M.S., University of North Carolina at Charlotte; additional study, Clemson University.

James D. Hartman, Jr., M.B.A.

Assistant Professor, Management
A.A., Gardner-Webb University; A.B., Wofford College; M.B.A., University of South Carolina; additional study, Clemson University.

Carol L. Higby, M.S.

Associate Professor, Health Education/Physical Education

B.S., Malone College; M.S. University of Akron; Ed.D. Candidate, University of Akron

June Hobbs, Ph.D.

Assistant Professor, English; B.A., Oklahoma Baptist University; M.A., University of Louisville; Ph.D., University of Oklahoma, Norman.

Arlen K. Honts, M.B.A.

Assistant Professor, Business
B.S., M.B.A., University of Oklahoma; Ph.D. Candidate, Vanderbilt University.

William M. Hoover, Ph.D.

Chair, Department of Mathematical Sciences,
Professor of Mathematics
B.S.E.E., Virginia Military Institute; M.S.E.E., Ph.D., University of Texas at Arlington.

Tammy Campbell Hoyle, M.A.

Instructor, Mathematics
B.S., Gardner-Webb University; M.A. Wake Forest University

Delores M. Hunt, D.A.

Dean, School of Education, Professor, Health Education, Physical Education
B.S., Auburn University; M.Ed., D.A., Middle Tennessee State University.

Thomas H. Jones, Ph.D.

Professor, Biology,
B.S., Methodist College; M.S., Ph.D. North Carolina State University.

Lynn Carpenter Keeter, M.A.

Instructor, English
A.A., Isothermal Community College; B.A., M.A., Gardner-Webb University.

Janet Land, Ph.D.

Assistant Professor, English
B.S., University of North Carolina at Greensboro; M.A., East Carolina University; Ph.D., University of South Carolina.

Soon-Jae Lee, Ph.D.

Assistant Professor, Finance
B.A., Sogang (Korea) University; M.B.A., The University of Texas at Arlington; Ph.D., The Ohio State University.

Robert Earle Morgan, Ph.D.

Professor, French, Mathematics
A.B., Lenoir-Rhyne College; M.Ed., Ph.D., University of North Carolina at Chapel Hill; additional study, University of North Carolina at Chapel Hill.

Robert D. Munoz, Ph.D.

Associate Professor, Sociology
B.S., University of Wisconsin; M.S., Ph.D., The Ohio State University.

Anthony I. Negbenebor, Ph.D.

Associate Professor, Economics

B.S., M.S., Ph.D., Mississippi State University.

Robert T. Parsons, Jr., D.Min.

Assistant Professor, Greek and Religion; Director of B.E. Morris Academy
Fruitland Baptist Bible Institute; B.A., Gardner-Webb University; M.A., Ph.D. Candidate, Baylor University; D.Min., Southeastern Baptist Theological Seminary.

Jack G. Partain, Th.D.

Professor, Religion
B.A., Baylor University; B.D., Southeastern Baptist Theological Seminary; Th.D., Southwestern Baptist Theological Seminary.

Patricia Partin, Ed. D.

Professor, Psychology
B.A., Wake Forest University; M. Ed., University of North Carolina at Chapel Hill; Ed.D., Duke University.

Phil Daniel Perrin, D.M.A.

Professor, Music
B.S., University of Tennessee, M.C.M., D.M.A., Southwestern Baptist Theological Seminary; additional study, Westminster Choir College.

Stephen Plate, D.M.A.

Professor, Music
B.M.E., Evangel College; M.M., D.M.A., University of Cincinnati.

Robert Shackleford, Ph.D.

Assistant Professor, Sociology
A.S., Bluefield College; B.S., School of the Ozarks; M.Div. Southeastern Baptist Theological Seminary; M.S., Ph.D., University of North Carolina at Greensboro.

Alexandre Strokanov, Ph.D.

Visiting Professor of History
Ph.D., Perm State University, Russia

Gorrell Clinton Prim, Jr., Ph.D.,

Assistant Professor, History
B.A., Wake Forest University; M.A., Appalachian State University; Ph.D., Florida State University.

Stephen E. Sain, M.A.

Registrar; Instructor, History
B.A., Gardner-Webb University; M.A., University of North Carolina at Charlotte; additional study, University of South Carolina.

Margaret M. Spears, M.S.N.

Assistant Professor of Nursing
Diploma in Nursing, Methodist-Kahler School of Nursing; B.S.N., University of the State of New York; M.S.N., University of North Carolina at Charlotte

Sophia Steibel, Ph.D.,

Assistant Professor, Religious Education, Religion
B.A., Gardner-Webb University; M.R.E., Ph.D., Southwestern Baptist Theological Seminary.

C. Oland Summers, D.A.

Professor, Music
A.B., M.A., Indiana State University; Ed.S., D.A., Ball State University.

James K. Taylor, Ph.D.

Professor, English B.A. Carson-Newman College;
M.A., Appalachian State University; Ph.D., Indiana University of Pennsylvania.

Marvin E. Taylor, Ph.D.

Professor, Spanish
B.A., Shorter College; M.A., University of Georgia;
Ph.D., University of Kentucky.

Brenda C. Terrell, M.Ed.

Instructor, Mathematics
A.A., North Greenville Junior College; B.A., Lander College; M.Ed., Clemson University; additional study, Presbyterian College.

Jeffrey L. Tubbs, D.A.

Professor, Health Education, Physical Education
B.A., Bryan College, M.S., D.A., Middle Tennessee State University.

J. Matt Whitfield, D.M.A.

Assistant Professor of Music
B.Mus., Murray State University; M.Mus., D.M.A., University of Alabama.

David K. Yelton, Ph.D.

Assistant Professor, History
B.A., Appalachian State University; M.A., Ph.D., University of North Carolina at Chapel Hill.

Adjunct GOAL Faculty

Miriam Ash-Jones, M.S.

Natural Science
B.S., University of Florida;
M.L.S., University of North Carolina at Greensboro;
M.S., North Carolina State University.

John H. Bevis, M.A.

Human Services
B. A., Clemson University;
M.A., Appalachian State University.

Teresa W. Biggs, M.B.A.

Business
B.S., M.B.A., Gardner-Webb University.

Sandra H. Braswell, M.S.,

Criminal Justice
A.A.S., Montgomery Technical Institute; B.A.S.,
Guilford College; M.S., University of North Carolina at Charlotte.

Melissa Brown, M.A.

English
B.A., Gardner-Webb University; M.A.,
Clemson University.

L. Rex Buelin, M.A.

Social Science
A.A., Surry Community College; B.S.B.,
M.A., Appalachian State University.

Ronald R. Caplette, M.B.A.

Business; B.A., University of North Carolina at Charlotte; A.A.S., Blue Ridge Community College;
M.B.A., Winthrop College.

Douglas Cody, M.B.A.,

Business
B.S., M.Ed., University of South Carolina; M.B.A., Old Dominion University.

Timothy R. Cook, M.A.,

Human Services
B.S., Gardner-Webb University; M.A., Appalachian State University.

Glenn E. Dahlen, M.B.A.,

Business
B.A., Auburn University; M.B.A., Ball State University.

A. Joan Dear, C.P.A.,

Business, Health Management
B.S., Gardner-Webb University, C.P.A.

James D. Fish, M.A.,

Criminal Justice
A.A., Western Piedmont Community College; B.S.,
University of North Carolina at Charlotte; M.A.,
University of South Carolina; additional studies in Law Enforcement Management.

Curtis E. Furr, Jr., M.Ed.,

Human Services
B.A., M.Ed., University of North Carolina at Chapel Hill.

Charles Warren Goforth, M.S.,

Criminal Justice
A.A., Cleveland Technical College; B.A., University of North Carolina at Charlotte; M.A., University of South Carolina.

A. Michael Hall, M.S.W.

Human Services

B.A., Bridgewater College; M.Div., Emory University; M.S.W., Virginia Commonwealth University.

Charles A. Helms, M.A.,

Business

B.S., M.A., Appalachian State University; additional graduate study at six universities and one community college.

Rodney D. Helms, M.A.T.,

Business

B.S., Appalachian State University; M.A.T., Winthrop College.

James H. Hines, Jr., M.A.,

Health & Physical Education.

B.S., East Tennessee State University; M.A., Gardner-Webb University.

Larry C. Hollar, M.A.,

Business

B.A., Lenoir-Rhyne College; M.A., Appalachian State University; additional study, Catawba Valley Technical College; Virginia Commonwealth University.

R. Burton Hudson, M.B.A.

Business

B.B.A., Wake Forest University; M.B.A., Florida State University.

Freddie L. Ingle, Ed.D.,

Business

A.A., Greenville Technical College; B.A., M.S., Ed.D., Clemson University.

Beverly Isley-Landreth, M.Th.,

Religion

A.A., Lees McRae College; B.A., Carson-Newman College; M.Div., M.Th., Southeastern Baptist Theological Seminary.

John M. Karriker, Ph.D.,

Natural Science

A.B., Catawba College; Ph.D., University of South Carolina at Columbia.

Charles R. King, Ed.D.,

Human Services

A.A., Wilmington Junior College; A.B., East Carolina University; M.Ed., Ed.D., University of North Carolina at Greensboro.

George C. Knox, M.S.,

Criminal Justice

A.A.S., Broward Community College; B.S., M.S., Nova University; additional study, North Carolina State University.

Steve J. Leatherwood, M.A.,

Human Services

B.A., Western Carolina University; M.A., Appalachian State University.

Nancy L. Linker, M.Ed.,

Human Services

A.A., Sandhills Community College; B.S., Pembroke State University; M.Ed., North Carolina State University.

William T. Manikas, Ed.D.

Social Science

B.A., Boston University; M.A., Colgate University; Ed.D., Florida Atlantic University.

Roger A. Mills, M.A.

Social Science

B.S., M.A., Appalachian State University.

Van L. Morrow, Ph.D.

Human Services

A.A., Gardner-Webb College; B.S., M.A., Appalachian State University; Ph.D., New York University.

Albert F. Mutton, M.S.,

Natural Science

B.S., M.S., East Tennessee State University.

Christine M. Newhart, M.B.A.

Business; B.A., Georgia Institute of Technology; M.B.A., Old Dominion University.

B.A., Wake Forest University, M.A., University of Tennessee.

Harvey S. Norris, M.S.W.

Human Services

B.A., M.S.W., Florida State University.

Cathy R. Ollis, M.S.

Natural Science

B.S., Appalachian State University; M.S., University of North Carolina at Chapel Hill.

Linda C. Opdyke, M.S.N.

Natural Science

B.S.N., M.S.N., University of North Carolina at Charlotte.

Nancy R. Owen, M.A.

Human Services

B.A., Gardner-Webb College; M.A., University of North Carolina at Charlotte.

James Prevost, M.A.,

Health & Physical Education

B.S., Limestone College; M.A., Gardner-Webb University; additional study, Hahnemann University School of Medicine.

David E. Ramsey, Ed.D.

Social Science

B.S., University of South Carolina; M.S., Ed.S., Appalachian State University;

Ed.D., East Tennessee State University.

James R. Robinson, Ed.D.

Human Services

B.A., M.S., University of Tennessee; Ed.D.,
University of North Carolina at Greensboro.

Joanne C. Ruhland, M.B.A.,

Business, Health Management

A.A., City University of New York; B.S., Gardner-
Webb University; M.B.A., Appalachian State
University.

James D. Russell, M.Div.

Religion

B.A., Gardner-Webb University; M.Div.,
Southwestern Baptist Theological Seminary.

Elizabeth H. Schenck, M.S.W.,

Human Services

B.A., North Carolina State University; M.S.W.,
University of South Carolina.

Leo W. Shores, M.S.

Criminal Justice

A. A., Cleveland Technical Institute; B.S.,
University of North Carolina at Charlotte;
M.S., La Salle University.

Scott R. Smith, M.A.,

Natural Science

B.A., Tennessee Temple University; M.A., Gardner-
Webb University.

Nathan A. "Tony" Stafford, M.B.A.

Business; B.S., Gardner-Webb University; M.B.A.,
Wake Forest University.

Mary C. Timpe, M.N.,

Nursing

B.S.N., Ball State University; M.N., Emory University;
Ph.D. in Nursing Candidate, Adelphi University.

C. Page Truitt, M.P.A.,

Human Services

B.A., Guilford College; M.S., Virginia Commonwealth
University; M.P.A., Georgia State University.

Joseph H. Wade, M.B.A.,

Business

B.A., University of North Carolina at Chapel Hill; B.A.,
Guilford College; M.B.A., Duke University.

Marie E. Warren, M.B.A.,

Business

A.A.S., Forsyth Technical Community College; B.S.,
Gardner-Webb University; M.B.A., Appalachian State
University.

John Wester, Ed.D.,

Higher Education Administration

B.A., Valdosta State University; M.Ed., Educational
Administration; Ed.D., The University of Southern
Mississippi.

Dianne Whisnant, M.A.,

Health Education

B.S., Western Carolina University, M.A., Gardner-
Webb University.

Brenda C. Wilson, M.S.,

Health & Physical Education

B.S., M.S., Appalachian State University; additional
study, Appalachian State University.

James R. Winning, Ed.D.,

Health Management

B.S., Clemson University; M.A., East Tennessee State
University; Ed.D., Nova University.



GOAL Core Curriculum Checksheet

I. Communications

- ☐ English 101 - Composition
- ☐ English 102 (or 300) - Composition II
- ☐ Oral/ Visual Communications Competency

II. Critical Thinking (One course)

- A. ☐ Mathematics 309 - Finite Mathematics
- ☐ Mathematics 316 - Probability & Statistics
- B. ☐ Computer Literacy (Required competency)

III. The Natural World (Two of the following)

- ☐ Science 302 - Physical Science
- ☐ Science 303 - Human Biology
- ☐ Science 322 - Environment
- ☐ Two regular college courses in Biology, Chemistry, Physics, Geology, etc., may be used to satisfy the requirement

IV. Personal Development (Two courses)

- ☐ Psychology 380 - Personal Assessment and Adjustment
- ☐ Health & Physical Education 338 - Health Maintenance, Promotion and Wellness

V. Civilization (Two of the following courses)

- ☐ Social Science 305 - Global Understanding
- ☐ History 301 - Western Civilization I
- ☐ History 302 - Western Civilization II
- ☐ History 319 - 20th Century U.S. History
- ☐ Political Science 302 - U.S. Government

At least one course transferred in or taken at GWU must be one of the above History courses.

VI. Aesthetics (Two courses - One from each category)

- A. ☐ Art 307 - Art Appreciation for the Adult Learner
- ☐ Music 320 - Survey of Music
- ☐ French 300 - French Culture
- ☐ Spanish 300 - Spanish Culture
- B. ☐ English 330 - English Literature Survey I
- ☐ English 331 - English Literature Survey II
- ☐ English 332 - American Literature Survey

VII. Christianity (Two courses)

- ☐ Religion 304 - Old Testament Survey
- ☐ Religion 305 - New Testament Survey
- ☐ Religion 341 - Christian Ethics (For Nursing Students Only)

Business Program Checklist

1. ACCOUNTING

Prerequisites: Courses which must be completed prior to entry into the GOAL Program

- ☐ a. Accounting Principles (6 semester or 9 quarter hours)
- ☐ b. Macroeconomics (1 course)
- ☐ c. Microeconomics (1 course)
- ☐ d. Cost Accounting (1 course)
- ☐ e. Federal Income Tax (1 course)
- ☐ f. Gardner-Webb English 101 and 102
- ☐ Coursework in algebra is recommended prior to taking Mathematics 309 or 316 at Gardner-Webb

Gardner-Webb Coursework:

A. University Core - See GOAL Core Curriculum Checklist

B. Major:

- ☐ ACC313 ☐ ACC314 ☐ ACC435
- ☐ ACC450 ☐ BAD300 ☐ BAD305
- ☐ BAD312 ☐ BAD318 or MGT422
- ☐ BAD480 ☐ INT420 or other Business Elective
- ☐ MGT 416 or Accounting Elective

2. BUSINESS ADMINISTRATION

Prerequisites: Courses which must be completed prior to entry in the GOAL Program

- ☐ a. Accounting Principles (2 courses)
- ☐ b. Macroeconomics (1 course)
- ☐ c. Microeconomics (1 course)
- ☐ d. Gardner-Webb English 101 and 102
- ☐ Coursework in algebra is recommended prior to taking Mathematics 309 or 316 at Gardner-Webb

Gardner-Webb Coursework:

A. University Core - See GOAL Core Curriculum Checklist

B. Major:

- ☐ BAD300 ☐ BAD305 ☐ BAD312
- ☐ BAD318 or MGT422 ☐ MGT 410 or 403
- ☐ BAD480 ☐ MGT 400 or MGT416
- ☐ 10 Semester hours of Business electives

3. MANAGEMENT INFORMATION SYSTEMS

Prerequisites: Courses which must be completed prior to entry in the GOAL Program

- ☐ a. Accounting Principles (2 courses)
- ☐ b. Macroeconomics (1 course)

- ☐ c. Microeconomics (1 course)
- ☐ d. Associate Degree in Management Information Systems, Data Processing, Computer Science or 14 semester/21 quarter hours in computer related subjects
- ☐ Gardner-Webb English 101 and 102
- ☐ Coursework in algebra is recommended prior to taking Mathematics 309 or 316 at Gardner-Webb

Gardner-Webb Coursework

A. University Core - See GOAL Core Curriculum Checklist

B. Major:

- ☐ BAD305 ☐ BAD312 ☐ BAD480
- ☐ MGT416 ☐ MIS371 ☐ MIS423 (or 432)
- ☐ MIS433 ☐ MIS471 ☐ MIS485
- ☐ MGT410 or 403
- ☐ INT420 or other Business Elective

4. HEALTH MANAGEMENT

Prerequisites Courses which must be completed prior to entry in the GOAL Program

- ☐ a. Associate Degree or equivalent. (Note: A health related degree is acceptable.)
- ☐ b. Accounting Principles (2 courses)
- ☐ c. Macroeconomics (1 course)
- ☐ d. Microeconomics (1 course)
- ☐ e. Equivalent of Gardner-Webb's English 101 and 102.

Gardner-Webb Coursework

A. University Core - See GOAL Core Curriculum Checklist

B. Major

- ☐ HMG300 ☐ HMG301 ☐ HMG303
- ☐ HMG304 ☐ HMG307 ☐ HMG308
- ☐ HMG410 ☐ MGT400 ☐ MGT422
- ☐ BAD325 or MGT 425 ☐ MGT 403

- ☐ Other Business elective or electives if needed for graduation.

BSN Checksheet

Prerequisites: Courses which must be completed prior to entry in the GOAL Program

- ☐ 1. Completion of an Associate Degree with a major in nursing or a hospital diploma nursing program with RN certification. RN licensure in the state of North Carolina.
- ☐ 2. Completion of 25 semester hours of nursing courses at the ADN level or the completion of a series of nursing exams for 37 semester hours of credit with 25 hours applied directly to baccalaureate nursing courses.

Note: Any credits received over 25 hours will be grouped under the category of ADN nursing elective hours. Refer to the BSN Student Handbook for detailed information.

Successful completion of courses in the following areas is recommended before entry into the program:

- ☐ 1. Completion of coursework in the areas of
 - ☐ Anatomy & Physiology; ☐ Microbiology.
 - ☐ Hospital diploma graduate who completed anatomy and physiology; microbiology through a diploma program without receiving academic hours of credit that will transfer. (Student may elect to

take NLN exams to receive credit for these courses. Students may also elect to take GWU Science 303, Human Biology, to meet the anatomy and physiology requirements.)

- ☐ 2. English 101 and 102

Gardner-Webb Coursework

A. University Core - See GOAL Core Curriculum Checksheet

B. Supportive Courses:

- ☐ BIO335
- ☐ Environment or Environmental Health
- ☐ 300 or 400 level Management or Health Management courses
- ☐ SOC340
- ☐ Statistics Course
- ☐ Political Science 302

C. Major (30 semester hours):

- ☐ NUR300 ☐ NUR301 ☐ NUR302
- ☐ NUR307 ☐ NUR401 ☐ NUR403
- ☐ NUR404 ☐ NUR405 ☐ NUR409
- ☐ Nursing elective or electives if needed for graduation



Human Services Checksheet

Prerequisites: Courses which must be completed prior to entry in the goal program

- ☐ 1. Completion of an Associates Degree (or equivalent) in an appropriate area
 - ☐ 2. Successful completion of courses in the liberal arts and social/behavioral sciences is recommended
- Gardner-Webb Coursework:
- A. University Core - See GOAL Core Curriculum Checksheet
 - B. Major: 30 semester hours are required in the major with at least 15 of those at Gardner-Webb

- | | | |
|---------------------------------|---------------------------------|---------------------------------|
| <input type="checkbox"/> HEA401 | <input type="checkbox"/> HUS300 | <input type="checkbox"/> HUS301 |
| <input type="checkbox"/> HUS302 | <input type="checkbox"/> HUS320 | <input type="checkbox"/> HUS400 |
| <input type="checkbox"/> HUS491 | <input type="checkbox"/> HUS497 | <input type="checkbox"/> PSY305 |
| <input type="checkbox"/> PSY401 | <input type="checkbox"/> PSY402 | <input type="checkbox"/> PSY493 |
| <input type="checkbox"/> SOC313 | | |

☐ ELECTIVES (Take as many as needed to complete 64 senior college hours and the minimum 128 semester hour requirement for graduation).

Criminal Justice Checksheet

Prerequisites: Courses which must be completed prior to entry in the goal program

- ☐ 1. Completion of an Associates Degree (or equivalent) from a regionally accredited institution
- ☐ 2. Completion of at least 21 quarter (14 semester) hours of law enforcement courses.

Gardner-Webb Coursework:

- A. University Core - See GOAL Core Curriculum Checksheet
- B. Major: (30 semester hours are required in the major with at least 15 of these at Gardner-Webb)

- | | | |
|---------------------------------|---------------------------------|---------------------------------|
| <input type="checkbox"/> CJC410 | <input type="checkbox"/> CJC420 | <input type="checkbox"/> CJC430 |
| <input type="checkbox"/> HEA401 | <input type="checkbox"/> MGT400 | <input type="checkbox"/> PSC314 |
| <input type="checkbox"/> PSY401 | <input type="checkbox"/> SOC400 | |

Supportive and Electives:

- | | | |
|---------------------------------|---------------------------------|---------------------------------|
| <input type="checkbox"/> CJC491 | <input type="checkbox"/> CJC498 | <input type="checkbox"/> HIS319 |
| <input type="checkbox"/> MGT403 | <input type="checkbox"/> PSC315 | <input type="checkbox"/> PSC495 |
| <input type="checkbox"/> PSY305 | <input type="checkbox"/> SOC202 | <input type="checkbox"/> SOC310 |
| <input type="checkbox"/> SOC313 | | |

☐ ELECTIVES (Take as many as needed to complete 64 senior college hours and the minimum 128 semester hour requirement for graduation.)

For Information or Assistance

Academics - Evan M. Thompson, Dean of Special Studies, Room 205, Dover Campus Center, Extension 4627.

Academic Advising - Contact the advisor assigned to you in your acceptance letter or contact Melvin R. Lutz, Dean of Academic Advising and Registration, Room 102, Webb Hall, Extension 4266

Administrative Assistant - Joyce Mull, Room 204, Dover Campus Center, Extension 4625.

Admissions - Evan M. Thompson, Dean of Special Studies, Room 204, Dover Campus Center, Extension 4627.

Auto Registration, Traffic, Parking, Security - Tracy Curry, Director of Safety and Security, Poston Center, Extension 4440.

Bookstore - Mrs. Angie Farley, Manager of Campus Shop, Ground Floor, Dover Campus Center, Extension 4273.

Broyhill School of Management - Dr. Keith Griggs, Chair, Room 307, Lindsay Hall, Extension 4382.

Business Advisor - Ms. Martha E. Owens, Room 204, Dover Campus Center, Extension 4626.

Business Matters - Mike Hardin, Assistant Vice President for Business and Finance, Webb Hall, Extension 4282 or Mrs. Shirley Pylon, Business Office Manager., Webb Hall, Extension 4286.

Calendar of Events - Mrs. Audrey Sloan, Student Development, Dover Campus Center, Extension 4732.

Campus Minister - Burdette Robinson, Room 244, Dover Campus Center, Extension 4279.

Course Changes, Drop/Withdrawal - Registrar's Office, Room 109, Webb Hall, Extension 4260.

Davis School of Nursing - Mrs. Wanda Stutts, Chair, 704 Cherry Street, Statesville, (704) 872-3664.

Department of Religious Studies - Dr. Alice Cullinan, Chair, Room 229, Lindsay Hall, Extension 4459.

Department of Social Sciences - Dr. Anthony Eastman, Chair, Room 106, Dover Chapel, Extension 4466. Dr. Barry Hambright, GOAL Coordinator, Room 110, Dover Chapel, Extension 4468.

Financial Planning - Admissions Center, Extension 4248 or 1-800-253-6472.

ID Cards - University Police, Poston Center, Extension 4441.

Public Information - Matthew Webber, Director of Public Information, Communications House, Extension 4637.

Library Director - Ms. Valerie Parry, John R. Dover Memorial Library, Extension 4293.

Payment of Fees - Business Office, Room 116, Webb Hall, Extension 4289.

President - Dr. M.Christopher White, Room 202, Webb Hall, Extension 4237.

Recruiting - GOAL Program - Charles A. McCuen, Director of Admissions - GOAL, Room 204, Dover Campus Center, Extension 4318.

Registration - Stephen Sain, Registrar, Room 104, Webb Hall, Extension 4260.

School of Nursing, GWU Campus - Dr. Marcia Miller, Room 210, Elliot Hall, Extension 4364.

Student Development - Wayne Johnson, Dover Campus Center, Extension 4300.

Benjamin F. Davis, Director of Counseling Center, Room 210, Dover Campus Center, Extension 4357.

Mrs. Audrey Sloan, Director of Student Activities, Room 237, Dover Campus Center, Extension 4732.

Transcripts - Mrs. Lou Ann Scates, Associate Registrar, Room 108, Webb Hall (Written, signed request required: Official or mailed copies, \$3. Unofficial copies picked up at Webb Hall 109, free.).

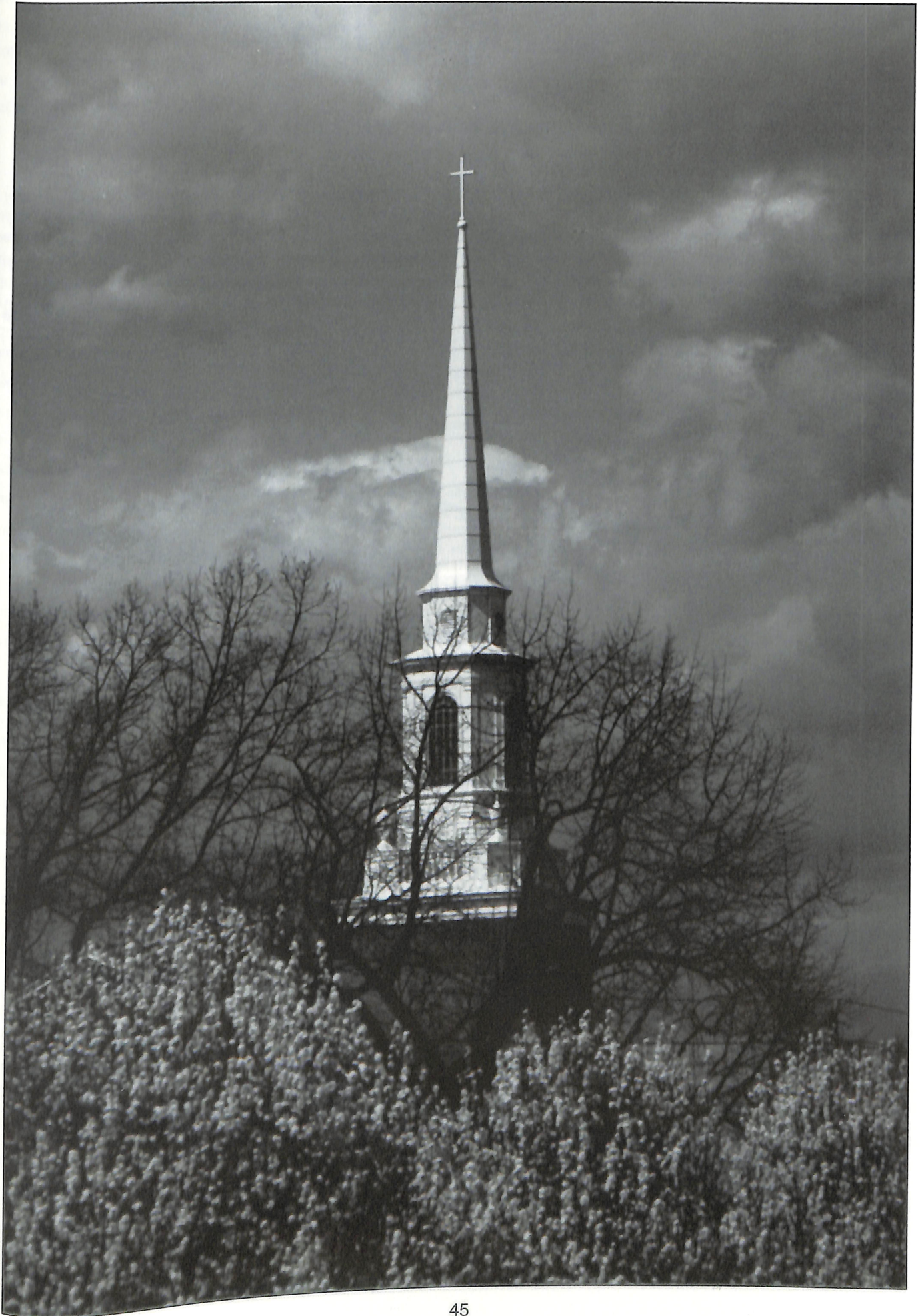
Veteran Affairs - Mrs. Joyce Crumpton, Room 108, Webb Hall, Extension 4260.

All offices can be reached by calling (704)-434 and the appropriate extension. General information can be obtained by calling (704) 434-2361

MAILING ADDRESS: BOILING SPRINGS, NC 28017

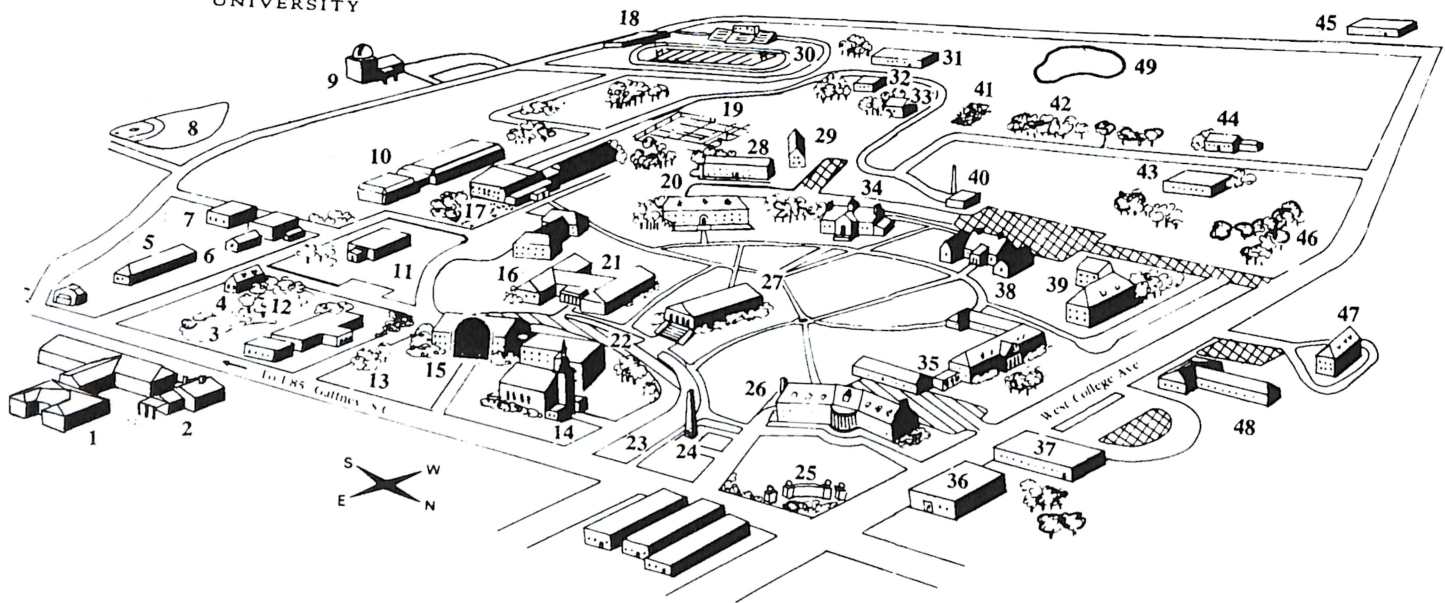
Index

- 1994 Board of Trustees, 31
 - Officers of the Corporation, 31
 - Trustee Emeritus, 31
- Academic Information, 10
 - Academic Counseling, 10
 - Academic Load, 10
 - Adding or Changing Courses, 12
 - Auditing Courses, 12
 - Change of Name or Address, 12
 - Charge Reduction Policy for Graduate and GOAL Programs, 11
 - Charge Reduction Schedule, 11
 - Class Attendance Policy, 13
 - Classification of Students, 13
 - Course by Arrangement, 12
 - Deferred Payment Plan, 11
 - Delinquent Student Accounts, 11
 - Financial Assistance, 12
 - Identification Card, 12
 - Independent Study, 12, 27, 29
 - Readmission, 10
 - Registration, 10
 - Taking Courses at Other Institutions, 12
 - Tuition, 10
 - Withdrawal, Suspension, Expulsion, 12
 - Withdrawing From Courses, 12
- Adjunct GOAL Faculty, 35
- Administration and Regular GOAL Faculty, 32
- Admissions Criteria, 9
 - GOAL Admissions Procedures, 9
 - Transfer Credit, 9-10
 - Transfer Policy, 9
- BSN Checksheet, 41
- Business Program Checksheet, 40
- Code of Conduct, 20
 - Aggravated Assault, 20
 - Aiding/Abetting, 20
 - Alcohol/Drugs, 20
 - Assault, 20
 - Demonstrations, 20
 - Disorderly Conduct, 21
 - Fair Process, 21
 - False Reporting, 20
 - Firearms/Explosives/Weapons, 21
 - Gambling, 20
 - Hazing, 20
 - Lying, 20
 - Obscene, Lewd, Indecent Media Exhibition, 20
 - Policy on Academic Honesty, 21
 - Faculty Responsibilities, 21
 - Preamble, 21
 - Procedure for Handling Cases of Academic Dishonesty, 22
 - Punishments, 23
 - Repeating Courses In Which Academic Dishonesty Occurred, 23
 - Student Responsibilities, 21
 - Unauthorized Entry, 20
 - Vandalism, 20
 - Verbal Abuse or Harassment, 20
- Compliance Statement For The Drug-Free Schools and Communities Act Amendments, 24
- Course Descriptions, 25
- Criminal Justice Checksheet, 42
 - Core Curriculum:, 16
- Department of Social Science, 19
 - Criminal Justice, 19-20, 25
 - The Bachelor of Science Degree Program In Social Science With a Concentration in Human Services, 19
- GOAL Core Curriculum, 16-17
- GOAL Core Curriculum Checksheet, 39
- Grades and Reports, 13
 - Academic Appeals, 13
 - Application For Graduation, 15
 - Campus Shop, 15
 - Career Planning and Placement, 15
 - Grade Point Average (GPA), 14
 - Grading System, 13
 - Graduation Requirements, 15
 - Honors, 14-15
 - GOAL Academic Award, 15
 - Graduation Honors, 15
 - Semester Honors, 14
- Noel Programs for the Disabled, 16
- Parking, 16
- Repeating Courses, 14, 23
- Retention Standards, 14
- Student Access to Educational Records, 15
- Student Responsibility, 15
- Human Services Checksheet, 42
- Introduction to Gardner-Webb University, 5
 - Accreditation, 5
 - Location, 5
 - Special Studies Program, 5
 - Statement of Purpose, 5
- Major Programs of Study, 17
 - Accounting Degree Requirements, 17
 - Broyhill School of Management, 17
 - Business Administration Degree Requirements, 17
 - Management Information Systems Degree Requirements, 18
- Nursing, 18
 - Prerequisites for Admission:, 9
 - Admission to the Bachelor of Science in Nursing Program, 18
 - Bachelor of Science in Nursing Program, 18
 - BSN Degree Requirements:, 19
 - Special Nursing Requirements: 19
- Summer School, 6
- Whom To Contact, 43



Campus Map

Gardner-Webb
UNIVERSITY



Admissions Hall		Hamrick (V.E.) Field House	18	Noel House	4
/Financial Planning	37	H.A.P.Y. Hall	35	(Center for Hearing and Visually Impaired)	
Bost Gym/Swimming Pool	17	International House	5	O. Max Gardner Hall	38
Campus House	44	International Students		Physical Plant/Maintenance Shop	1
Charles I. Dover Campus Center	21	Honors Programs		Power Plant	40
Graduate Office		Jarrell Gate	13	Radio Station	47
Communications House	2	John R. Dover, Jr. Chapel	14	Royster Hall	48
Craig Hall	34	John R. Dover, Sr. Library	11	Spangler Gate	25
Crawley Memorial Hospital	45	Kathleen N. Dover		Spangler and Myers Halls	7
Decker Hall	16	Memorial Garden	3	Spring	41
Dixon Gate	46	Light Tower	24	Stroup Hall	39
Elliott Hall	22	NOEL HALL	15	Suttle Tennis Courts	19
Poston Welcome Center	12	Lake Hollifield	49	U.S. Post Office	36
Reception Center		Lindsay Classroom Hall	15	Visitors' Parking Area	23
Student Publications		Lutz-Yelton Convocation Center	10	Washburn Building	6
Safety and Security		Lutz-Yelton Hall	28	(Foreign Language Studies)	
Ernest W. Spangler		Mauney Hall	29	Webb Administration Hall	26
Memorial Stadium	30	Memorial Wildflower Garden	42	Williams Observatory	9
Grounds Storage	31	Nanney Baseball Field	8	Withrow (A.T.) Science Hall	20
Hamrick (E.B.) Hall	27	Nanney Hall	43		

FOR OFFICE USE ONLY

Business _____
Fin. Aid Bkpr _____
Registrar _____
Stu. Svcs _____

Gardner-Webb

UNIVERSITY

Check if:

☐ Readmission

☐ Special Student
(non-degree seeking)

APPLICATION FOR ADMISSION GOAL PROGRAM

Thank you for your interest in Gardner-Webb University. Please follow the steps below for admission to GOAL.

1. Complete all items of the application. — Please use black ink.
2. Forward the application with a \$15 processing fee to the **Office of Special Studies, Gardner-Webb University, Boiling Springs, NC 28017**. The processing fee is not required for readmission.
3. Request **official transcripts** from all colleges you have attended. They should be sent to the address indicated in step 2. Applicants for readmission must supply transcripts for all college work completed since leaving Gardner-Webb.

Full Legal Name (First, Middle, Maiden, Last, Suffix) _____ Preferred _____

Social Security Number _____ - _____ - _____ Home Phone (_____) _____ Work Phone (_____) _____

Legal Permanent Address _____

Proposed Date of Enrollment: ☐ Fall ☐ Spring ☐ First Summer Term ☐ Second Summer Term 19____

I will attend classes at the _____ GOAL Center. Probable Major: _____

Date of Birth ____/____/____ Sex: ☐ Male ☐ Female I am a citizen of _____

I am a legal resident of (City) _____, (State) _____, (County) _____

My ethnic origin: ☐ White, non-Hispanic ☐ Black, non-Hispanic ☐ Hispanic
☐ American Indian or Alaskan Native ☐ Asian or Pacific Islander
☐ Non-resident Alien

I ☐ Do ☐ Do Not
want financial
aid materials

Religious Preference: _____ Physical Handicap (if any) _____

I ☐ will ☐ will not be receiving Veteran's Benefits. Branch of Service _____

Hometown Newspaper _____

List all colleges or universities attended in order of last to first. Use the back of this form if necessary. An official transcript from each college must be submitted to the Office of Special Studies.

College last attended _____ To _____ Currently Enrolled: ☐ Yes ☐ No

Dates attended: From _____ to _____ Dates attended _____ to _____

College _____ Dates attended _____ to _____

College _____ Dates attended _____ to _____

College _____ Dates attended _____ to _____

DEGREES HELD

Degree _____ Major _____ College _____

Degree _____ Major _____ College _____

Eligible to return? ☐ Yes ☐ No Reason for leaving _____

Any emotional or nervous disturbances requiring a physician within the past year? ☐ Yes ☐ No

If yes, explain briefly _____

Briefly state how Gardner-Webb can meet your needs _____

Gardner-Webb University admits students without regard to religious creeds, race, sex, national origin or handicap.

STUDENT STATEMENT: I certify that all information given in this application is complete and accurate. When I attend Gardner-Webb University, I agree to abide by the established rules and regulations of the University.

Signature _____ Date _____

Transcript Request Form

(Submit to each college attended)

Date _____

TO: REGISTRAR

College

Address

Dear Sir/Madam:

I have applied for admission to the Gardner-Webb University GOAL Program. Please mail an official transcript of my record showing grades earned as of this date to:

**Office of Special Studies
Gardner-Webb University
Boiling Springs, North Carolina 28017**

If this transcript does not show the date that I was graduated, please mail a supplement, or a final complete transcript after my graduation or upon completion of additional coursework.

Date of Graduation

Signature of Student

Street or Route & Box Number

City, State and Zip Code

Social Security Number

NOTE TO APPLICANT:
Passage of the Family Educational Rights and Privacy Act of 1974 requires permission be granted for the release of academic records. For that reason, it is necessary for you to request that your transcript be mailed to our office. Please complete the information above and submit to the Registrar's Office of each college you have attended.

Notes

A series of horizontal lines for writing notes, spanning the width of the page. The lines are evenly spaced and extend from the left margin to the right edge of the page.



