

Gardner-Webb University

Digital Commons @ Gardner-Webb University

First Baptist Church Building History &
Historical Documents

First Baptist Church (Shelby, NC)

1953

1953 Education Building Plans

First Baptist Church Shelby

Follow this and additional works at: <https://digitalcommons.gardner-webb.edu/baptist-historical-collections-first-baptist-church-building-history-and-historical-documents>

Suggested Plans for Enlargement of Educational Department, First Baptist Church, Shelby

Our Church and Sunday School are growing. The demand is beyond our plant capacity and the time has come for expansion to accommodate not only the present attendance average of 1,000 each Sunday, but for future growth.

God has wonderfully blessed our Church and each of us indirectly. Our growth has been phenomenal and to adequately provide comfortable space, the church is united in this movement to enlarge.

ADVICE OF EXPERTS

We have obtained the services of the architects from the Baptist Sunday School Board in Nashville, Tenn. who have made a careful study of our needs. We have consulted with our local Sunday School Department heads and other officers with the result that these suggested plans are offered for your consideration.

As you will see the schedule calls for an educational plant that will accommodate 2,074. This will relieve present congestion and take care of our growth for many years to come.

These plans have been unanimously adopted as to area and size by your Advisory Committee of 48 men and women of the church. The plans are, however, subject to revision as to arrangement of rooms and assembly halls. The Planning Committee is therefore going into careful study with the local architects, V. W. Breeze and Associates, in improving the lay-out in order to keep the cost to a minimum, at the same time erecting a permanent structure, in keeping with our present plant, without sacrificing good workmanship and materials.

ESTIMATED COST

The estimated cost of a building such as this is \$250,000. That is a lot of money, but such a sum should be easier to raise in these prosperous times than the \$150,000 which we put into the present educational building in 1928.

Our church has long felt the need of a small Chapel for weddings and funerals. The Young People's Assembly in the present educational building on N. LaFayette street will therefore be partly used for this Chapel.

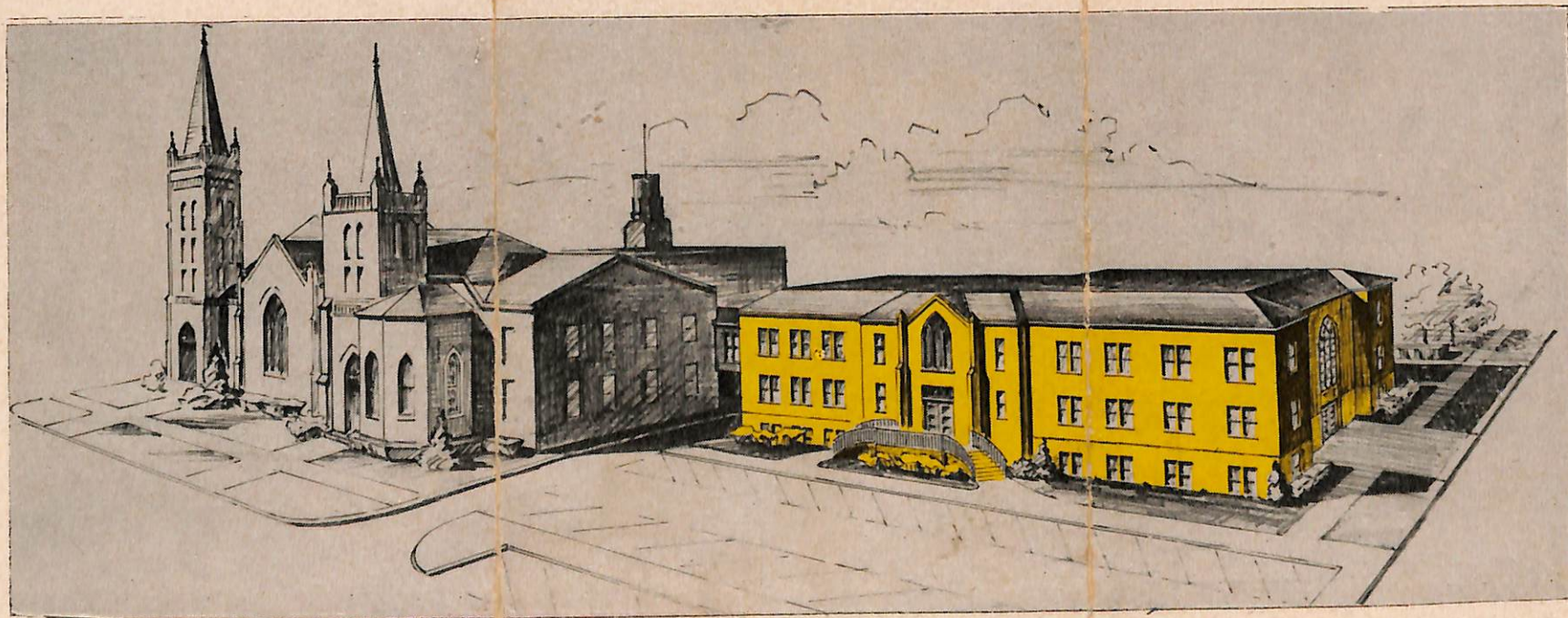
This plan contemplates moving the Pastor's Study, General Offices, Library and office of Educational Director from the present educational building into the new Educational plant.

ON NEWLY ACQUIRED SITE

As you know, the church has acquired the Wellman property to the rear of the present plant and across Northdale Alley on which to erect this new educational plant. The lot is approximately 132x155 feet and fronts on N. Washington. More parking space for cars is provided.

The present and future educational departments will be connected by an over-head corridor. A central heating plant, zoned to heat one or more sections of the plant as needed, is contemplated. Our present heating plant, located under the Sanctuary, is a real fire hazard and would not pass the Fire Underwriters' Code today.

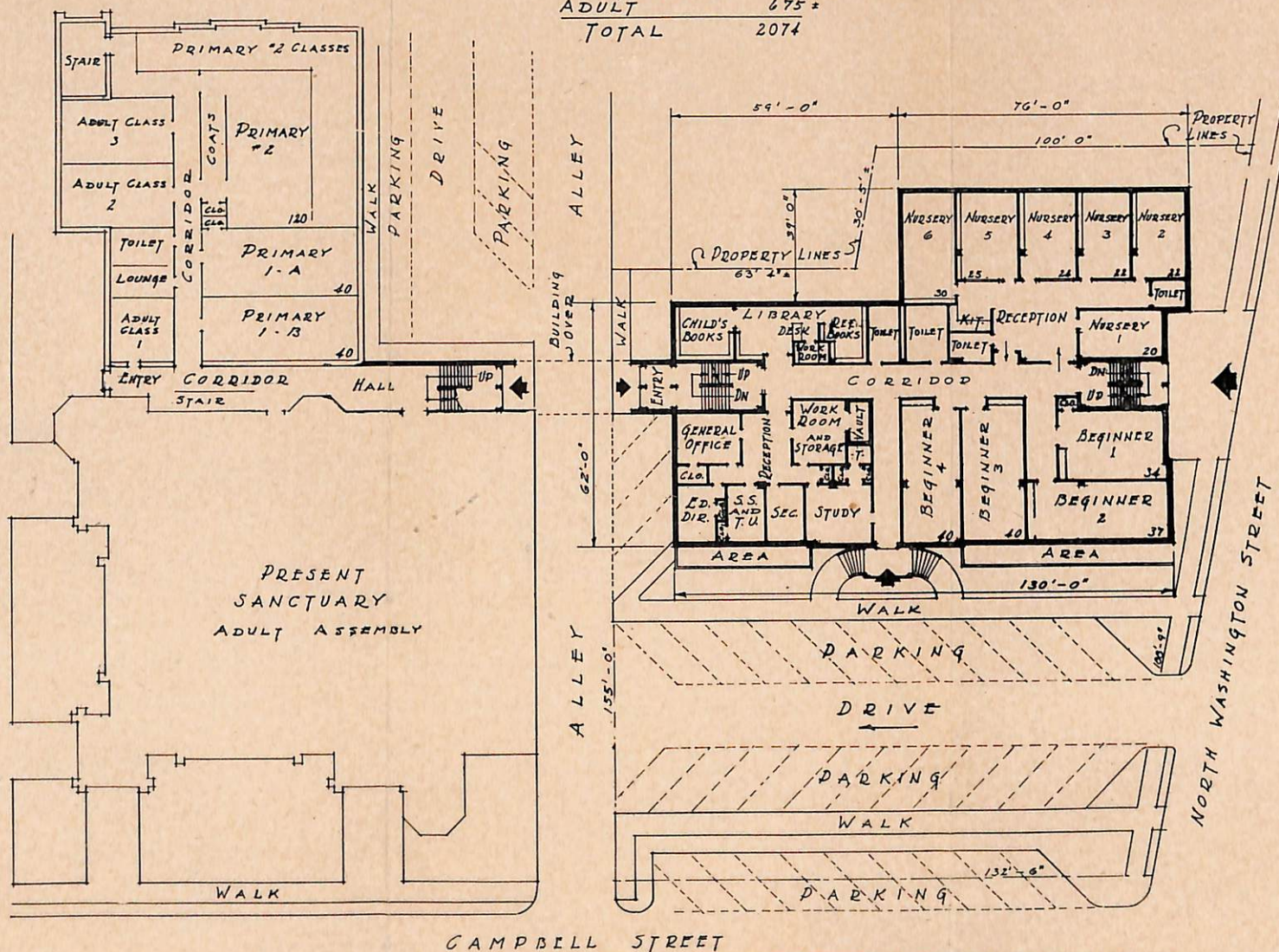
SUGGESTED PLANS: All plans shown in this folder were made after a careful study of our present and future needs by the Dept. of Church Architecture, Baptist Sunday School Board, Nashville, Tenn., William A. Harrell, Secy.

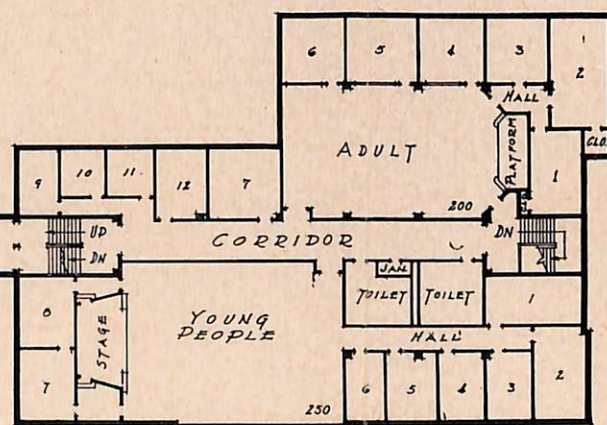
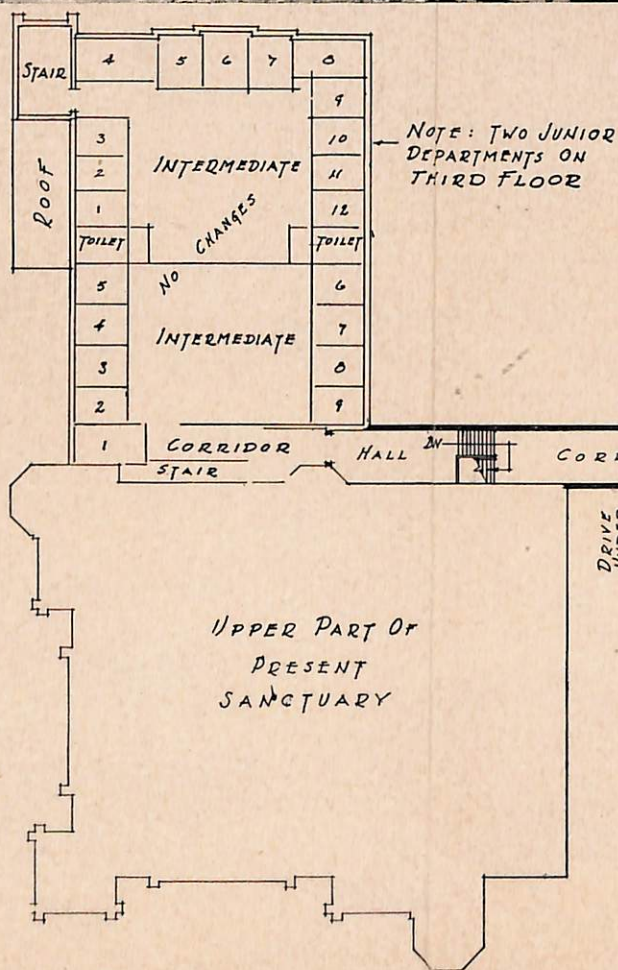


Fields Young, Jr., chairman of the building fund committee, suggested this financial plan at the Aug. 7th meeting. Raise \$150,000 during a concentrated six-months drive; \$50,000 during the construction period; \$100,000 to be borrowed and retired at \$20,000 a year through the church budget

Our church has approximately 1,000 church families. The average family income as of this year is \$3,220 per year. This would represent a total income of \$3,220,000 per year for our church families. A tithe of this amount in one year would raise the entire building sum needed.

NURSERY	143
BEGINNER	151
PRIMARY	200
JUNIOR	240
INTERMEDIATE	240
YOUNG PEOPLE	425
ADULT	675 *
<hr/> TOTAL	<hr/> 2074





Present Crowded Conditions

UPPER LEFT PICTURE shows the crowded conditions of the Nursery department, where children are elbow-to-elbow at small tables. Teachers in this department cannot do their best work with the children under such conditions. Ample space will be provided in the expansion.

THE NEWTON BIBLE CLASS: Average attendance is about 100,—all of whom are crowded into a room about 25x30 feet. Ventilation is poor and supporting columns obscure view. The expansion plans calls for two adult departments, one assembly room designed to accommodate 385.

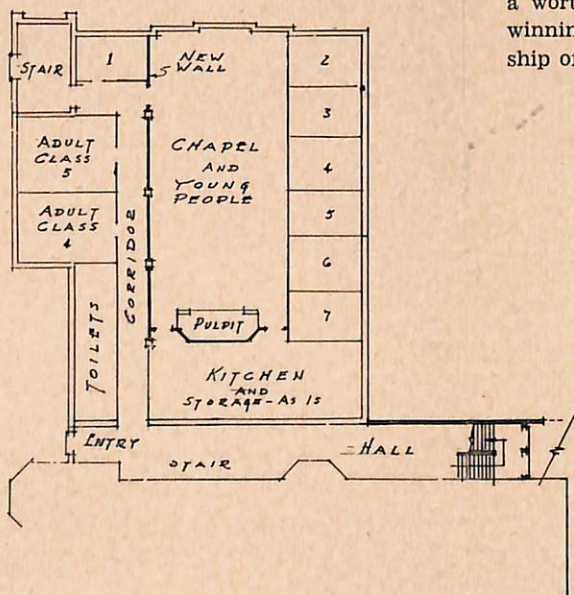
CAREFUL PLANNING

Your Planning Committee is fully aware of its responsibility. We are not proceeding hastily or without advice from experts. Not only have we had the advice of S. S. Department heads, representatives of every phase of the church body, but we are consulting the architects of the Southern Baptist S. S. Board. Local architects who will actually draw plans, will write specifications and supervise construction.

On this Planning Committee you have placed the following wise and consecrated personnel: O. M. Mull, Wilbur Wilson, Worth Branton, Max Washburn, Mrs. Rush Stroup, A. A. Powell, Mrs. Geo. Carpenter, Miss Laura Cornwell, V. W. Breeze, C. M. King and Mrs. O. M. Gardner, Sr.

Suggestions are welcome. Final plans will be submitted for your approval.

Lee B. Weathers, Chairman
Planning Committee



PASTOR'S APPEAL

For some period of time it has been evident that First Church must have more space to meet the needs of our growing Sunday School, Training Union, and Woman's Missionary Union. The Sunday School records reveal that in the past three years the average attendance has increased about two hundred per year. We have been using every available space — even hall ways — to care for the increased attendance. The Training Union must be cared for more adequately. Some of the Unions are meeting in undesirable conditions.

The activities of the Youth Organizations of the W.M.U. have been curtailed and thus progress retarded because of the lack of adequate physical space and equipment.

From the youngest nursery department to the oldest Adult class the need is — **more space.**

These needs are all cared for in the drawings that our Planning Committee has approved. We rejoice in the progress that has been made in planning for the new Educational Building. As we look forward to raising funds to construct the new building, let us unite our hearts in prayer that God will lead each member of our great church to have a worthy part in this program that will result in winning more people to Christ and into the fellowship of our church.

Your pastor,
Harlan Harris

NEEDS ARE ACUTE

For the past century our church has proven to be a Light House of Christianity—beaming the light of Faith, Hope and Charity throughout our city, county and the State of North Carolina. The founders of our great church and each succeeding generation have been divinely inspired and imbued with the spirit of expanding the teachings of Christ by providing sufficient facilities and accommodations in order that their children, neighbors and friends could be taught to glorify God and expand His Kingdom.

We stand at the threshold of opportunity; the opportunity of providing necessary and sufficient facilities and accommodations for our children, neighbors and friends, in order that they, as we, may learn and be taught the word of God and know His saving power.

Our needs for a new Educational building are acute. Facts, figures and statistics will show our situation clearly. We must face the facts and realize our obligations. The mantle is ours. We shall not shirk our duties, our responsibilities, our obligations. We must pledge ourselves, and arise and build, for the on-coming generations. Let's afford our children and our neighbor's children the same opportunity as our fathers and fore-fathers have afforded us.

Fields Young, Jr.
Chairman, Finance Committee

