

10-22-1942

1942 Minutes of the Kings Mountain Baptist Association

Kings Mountain Baptist Association

Follow this and additional works at: <https://digitalcommons.gardner-webb.edu/kmba-minutes>

Recommended Citation

Kings Mountain Baptist Association Collection, Minutes of the Kings Mountain Baptist Association, 1942. Series 1, Box 5, University Archives, Gardner-Webb University, Boiling Springs, NC.

This Book is brought to you for free and open access by the Kings Mountain Baptist Association at Digital Commons @ Gardner-Webb University. It has been accepted for inclusion in Series 1: Kings Mountain Baptist Association Minute Books by an authorized administrator of Digital Commons @ Gardner-Webb University. For more information, please contact digitalcommons@gardner-webb.edu.

Kings Mountain
Baptist Association
NORTH CAROLINA

•
Ninety-Second Annual Session

Held With

New Hope Church
October 22-23, 1942

Earl, North Carolina

•
The Next Session Will Be Held on Thursday And Friday
Before the Fourth Sunday in October 1943. The
First Day with Shelby First Church, and The
Second Day with Double Springs Church.

•
INTRODUCTORY—D. F. Putnam

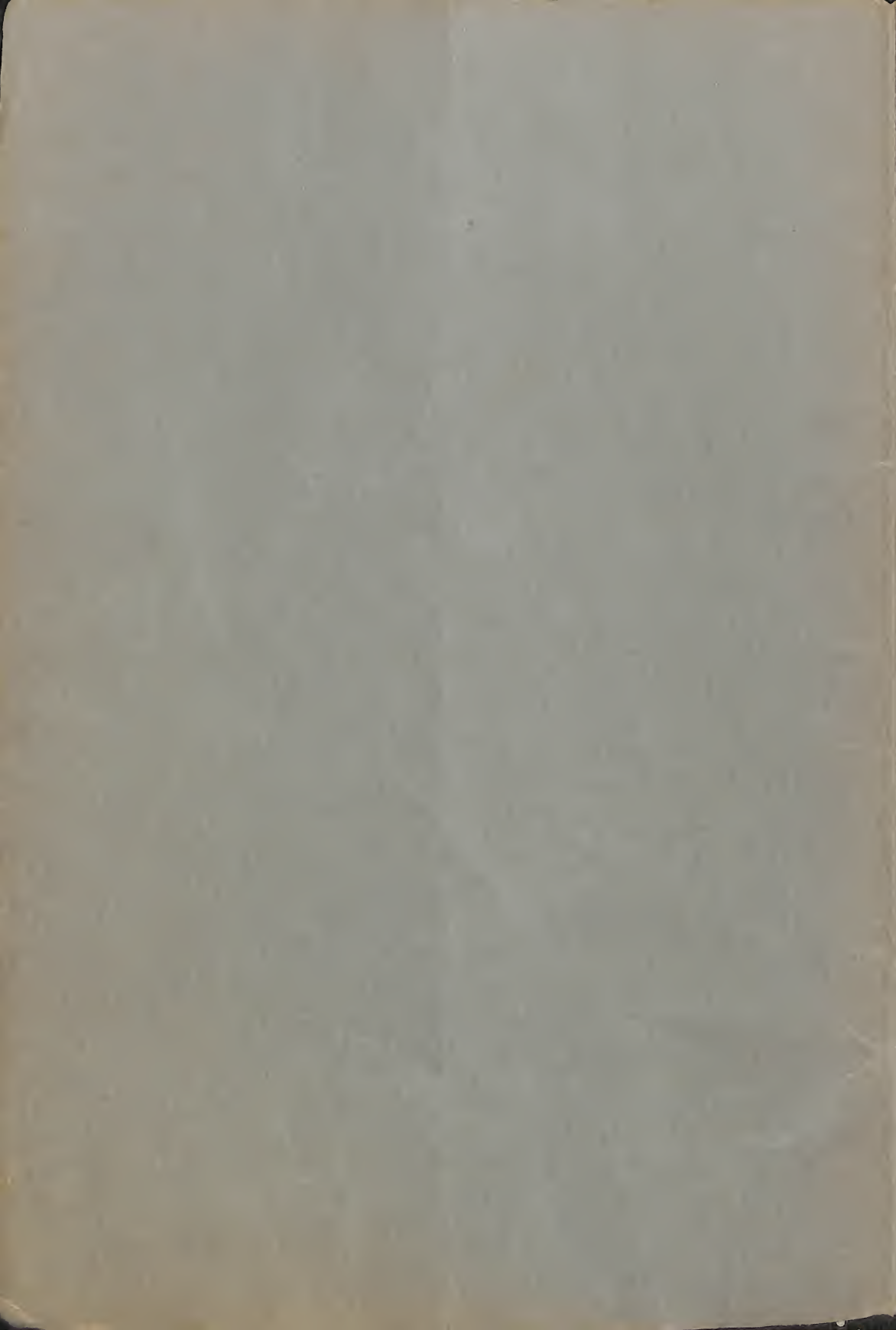
DOCTRINAL—W. G. Camp

Preachers:

Alternate—W. A. Elam

MISSIONARY—W. A. Roberts

Alternate—Lawrence Roberts



MINUTES
of
Kings Mountain
Baptist Association
NORTH CAROLINA

●
Ninety-Second Annual Session

Held With

New Hope Church

October 22-23, 1942

Earl, North Carolina

●
The Next Session Will Be Held on Thursday And Friday
Before the Fourth Sunday in October 1943. The
First Day with Shelby First Church, and The
Second Day with Double Springs Church.

●
INTRODUCTORY—D. F. Putnam

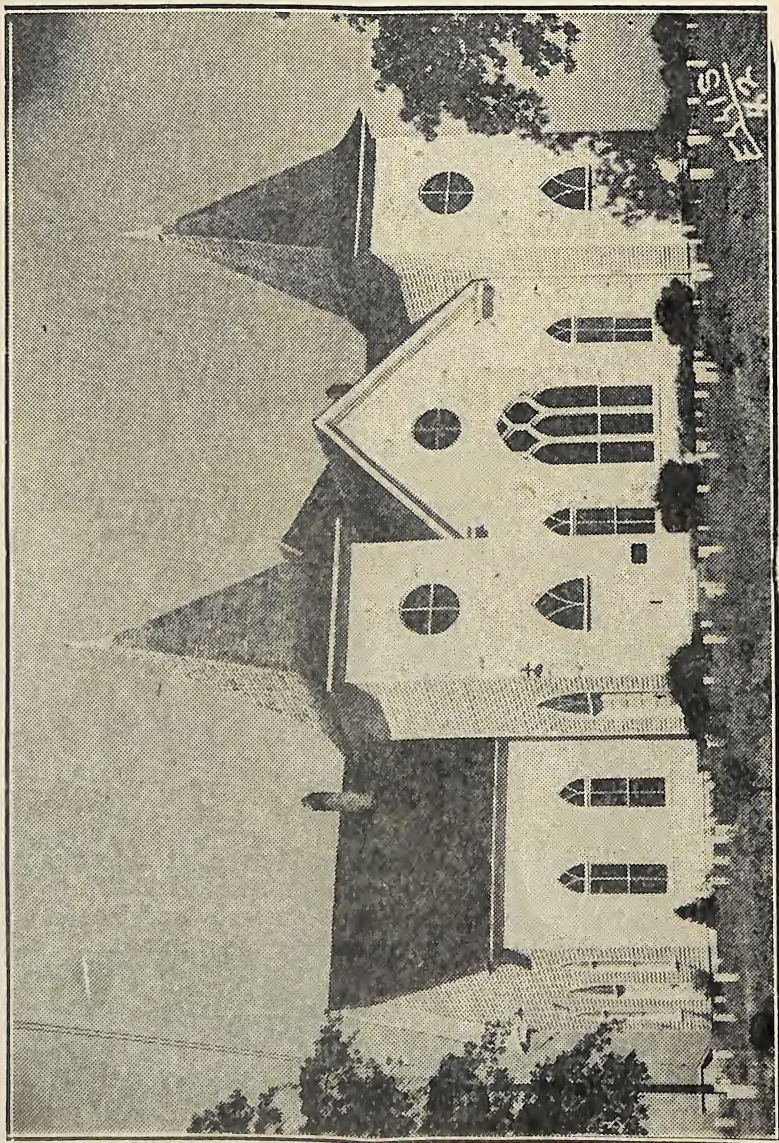
DOCTRINAL—W. G. Camp

Alternate—W. A. Elam

Preachers:

MISSIONARY—W. A. Roberts

Alternate—Lawrence Roberts



Above is New Hope Baptist church, scene of the 1942 Kings Mountain Association held Oct. 22-23. New Hope was organized in 1873 and the association has met there four times—1875, 1897, 1915, 1942. Rev. C. C. Crow is now pastor, and W. D. Earl is church clerk.



REV. C. C. CROW, pastor of New Hope Baptist church. Rev. Crow is also pastor at Lattimore and Race Path in the Sandy Run Association.

Rev. Crow was married and had two children when he entered the ministry. He then entered and finished Hollis High School and Wake Forest College. Since his graduation he has held pastorates in Rutherford and Cleveland counties.

INDEX

ADDENDA	37
ASSOCIANTIONAL DIRECTORY	5-11
CHURCHES AND MESSENGERS	15-16
COMMITTEE OF PRESENT SESSION	18
CONFESSION OF FAITH	14
CONSTITUTION	12-13
MEMORIAL	34
OUR DEAD	35
PROCEEDINGS BEGIN	18
PROCEEDINGS W. M. U.	39
REPORTS:—	
B. T. U.	22
Christian Education	33
Co-operative Program	21
Digest Church Letters	24
Election of Officers	31
General Board	25
Gifts to Gardner-Webb College	38
Hospitals	25
Orphanage	28
Public Morals	29
Recommendations	30-32
Relief and Annuity	32
Religious Literature	27
Resolutions	31
Sunday School	19
Treasurer's Report	24
W. M. U.	20
STATISTICAL TABLES BEGIN	42-53

Associational Directory

GENERAL OFFICERS OF ASSOCIATION

Moderator, J. W. Suttle	Shelby, N. C.
Vice-Moderator, W. A. Elam	Shelby, N. C.
Clerk-Treasurer, J. W. Costner	Lawndale, N. C.
Treasurer of Webb-Gardner Junior College Funds, J. T. Irvin	Shelby, N. C.

OF SUNDAY SCHOOL ASSOCIATION

Superintendent, N. L. Whisnant	Shelby, N. C., R. 5
Associate, Wilbur Wilson	Shelby, N. C.
Secretary, Miss LaLene Grigg	Shelby, N. C.

OF TRAINING UNION WORK

President, John A. Hallman	Earl, N. C.
Associate, Fletcher McGinnis	Casar, N. C.
Pastor Advisor, W. A. Elam	Shelby, N. C.
Secretary, Miss Vertie Chapman	Shelby, N. C.

OF WOMAN'S WORK

Superintendent, Mrs. John Wacaster	Cherryville, N. C.
Associate, Mrs. W. P. Biggerstaff	Shelby, N. C.
Secretary, Mrs. L. H. Ledford	Shelby, N. C.
Treasurer, Mrs. Ransom Casstevens	Shelby, N. C.
Young Peoples, Miss Ruby Chapman	Shelby, N. C.
Stewardship Chairman, Mrs. J. R. Cline	Shelby, N. C.
Personal Service Chairman, Mrs. J. R. Cantrell	Boiling Springs, N. C.
Mission Study Chairman, Mrs. Wade Bostic	Shelby, N. C.
R. A. Counsellor, Rev. L. L. Jessup	Shelby, N. C.

OF BOILING SPRINGS JR. COLLEGE

President, Rev. J. R. Cantrell	Boiling Springs, N. C.
Dean, Hubert C. Dixon	Boiling Springs, N. C.
Bursar, J. L. Lovelace	Boiling Springs, N. C.

NORTH CAROLINA BAPTIST ORPHANAGE REPRESENTATIVE

Hubert C. Dixon	Boiling Springs, N. C.
-----------------------	------------------------

—o—

ORDAINED MINISTERS DURING THE YEAR

Name and Address	Church Ordaining
Floyd Hollar, Kings Mountain	Wallace Grove

KINGS MOUNTAIN BAPTIST ASSOCIATION

STUDENTS FOR THE MINISTRY

Name and Address	Church
Bobby Crapps, Shelby (Millside)	Eastside
Eugene Poston, Shelby	Dover
Gorden Mode, B. B. I., New Orleans	Shelby Second
M. M. Lowery, Shelby	Bethel
Lawrence Blanton, S. B. T. S., Louisville, Ky.	Shelby Second
Bruce Whitaker, Wake Forest	Sandy Plains
John Hicks, S. B. T. S., Louisville, Ky.	Kings Mtn. First

ORDAINED MINISTERS HOLDING MEMBERSHIP IN THE ASSOCIATION AND NOT PASTORS IN THE ASSOCIATION

Name and Address	Church of Which Member
Buckner, C. W., Boiling Springs	Boiling Springs
Brown, W. T., Shelby	Shelby Second
Blanton, Lawrence, Louisville, Ky.	Shelby Second
Bostic, Wade D., Shelby	Shelby First
Blanton, W. A., Shelby	Shelby Second
Chapman, Clyde, Wake Forest	Shelby Dover
Goode, J. M., Boiling Springs	Boiling Springs
Hicks, J. J., Kings Mountain	Pleasant Hill
Hicks, J. G., Kings Mountain	Kings Mountain First
Honeycutt, W. W., Forest City	New Hope
Hughes, Durham, Shelby, Route 2	Pleasant Hill
Jones, W. S., Shelby, Route 4 (Pastor in Sandy Run)	Sandy Plains
Lancaster R. F., Boiling Springs	Boiling Springs
Padgett, Rush, Shelby, Route 4	Lattimore
Piercy, F. G., Shelby	Shelby Second
Redmon, W. H., Kings Mountain	Kings Mountain Second
Scism, L. B., Kings Mountain	Patterson Grove
Tedder, D. A., Shelby	Shelby First
Whitaker, L. R., Shelby, Route 5	Mulls Chapel

PASTORS OF THE ASSOCIATION LIVING INSIDE THE ASSOCIATION

Name	Address
Austin, B. F.	Kings Mountain
Blalock, Jesse	Shelby, Route 4
Biggerstaff, W. P.	Shelby, Millside
Bobbit, C. B.	Kings Mountain
Canipe, L. M., Boiling Springs	Boiling Springs
Costner, J. W.	Lawndale
Cantrell, J. R.	Boiling Springs
Crow, C. C.	Lattimore
Davidson, W. W.	Boiling Springs
Elam, W. A.	Shelby

KINGS MOUNTAIN BAPTIST ASSOCIATION

Gore, E. O.	Kings Mountain
Hollar, Floyd	Kings Mountain
Hoffman, W. A.	Grover
Jenkins, J. L.	Boiling Springs
Jessup, L. L.	Shelby
Kiser, A. M.	Waco
Putnam, D. F.	Shelby
Roberts, Lawrence	Shelby
Roberts, W. A.	Shelby
Suttle, J. W.	Shelby
Sargeant, A. G.	Kings Mountain
Turner, L. B.	Kings Mountain
Waldrop, H. E.	Shelby
Wall, Zeno	Shelby

PASTORS OF THE ASSOCIATION LIVING OUTSIDE THE ASSOCIATION

Camp, W. G.	Mooresboro
Carpenter, Ralph	Advance
Cook, M. L.	Statesville
Hawkins, W. L.	Gastonia
Mull, Otis	Vale
McDaniel, E. L.	Ellenboro

See Table Number One for Complete List of Churches and
Pastors Serving Same.

ASSISTANT PASTORS

H. B. Easom	Shelby First
-------------------	--------------

KINGS MOUNTAIN BAPTIST ASSOCIATION

CHURCHES

Beaver Dam
 Bethlehem
 Boiling Springs
 Buffalo
 Carpenter's Grove
 Casar
 David
 Double Shoals
 Double Springs
 Elizabeth
 Fallston
 Flint Hill
 Grover
 Kings Mountain, First
 Kings Mountain, Second
 Kings Mountain, Macedonia
 Lattimore
 Lawndale
 Love Valley
 Mt. Sinai
 Mulls Chapel
 New Bethel
 New Hope
 New Prospect
 Normans Grove
 North Brook
 Oak Grove
 Oak View
 Polkville
 Patterson Grove
 Patterson Springs
 Pleasant Grove
 Pleasant Hill
 Pleasant Ridge
 Poplar Springs
 Ross Grove
 Sandy Plains
 Shelby, First
 Shelby, Second
 Shelby, Bethel
 Shelby, Calvary
 Shelby, Dover
 Shelby, Eastside
 Union
 Waco
 Wallace Grove
 Zion
 Zoar

PASTORS AND POST OFFICES

J. W. Suttle, Shelby, N. C.
 W. G. Camp, Mooresboro, N. C.
 J. L. Jenkins, Boiling Springs, N. C.
 M. L. Cook, Statesville, N. C.
 Ralph Carpenter, Belwood, N. C.
 Lawrence Roberts, Shelby, N. C.
 D. F. Putnam, Shelby, N. C.
 J. W. Suttle, Shelby, N. C.
 J. W. Suttle, Shelby, N. C.
 W. A. Roberts, Shelby, N. C.
 Lawrence Roberts, Shelby, N. C.
 J. W. Costner, Lawndale, N. C.
 W. A. Hoffman, Grover, N. C.
 A. G. Sargeant, Kings Mountain, N. C.
 B. F. Austin, Kings Mountain, N. C.
 C. B. Bobbit, Kings Mountain, N. C.
 C. C. Crow, Lattimore, N. C.
 J. W. Suttle, Shelby, N. C.
 L. B. Turner, Kings Mountain, N. C.
 L. M. Canipe, Boiling Springs, N. C.
 E. L. McDaniel, Mooresboro, N. C.
 J. W. Suttle, Shelby, N. C.
 C. C. Crow, Lattimore, N. C.
 A. M. Kiser, Waco, N. C.
 John A. Hallman, Earle, N. C.
 Otis Mull, Vale, N. C., Route 3
 Luther Hawkins, Gastonia, N. C.
 E. O. Gore, Kings Mountain, N. C., Rt. 2
 D. F. Putnam, Shelby, N. C.
 J. W. Suttle, Shelby, N. C.
 Jesse Blalock, Shelby, N. C., Route 4
 A. M. Kiser, Waco, N. C.
 W. W. Davidson, Boiling Springs, N. C.
 Jesse Blalock, Shelby, N. C., Route 4
 J. R. Cantrell, Boiling Springs, N. C.
 Lawrence Roberts, Shelby, N. C.
 Lawrence Roberts, Shelby, N. C.
 Zeno Wall, Shelby, N. C.
 L. L. Jessup, Shelby, N. C.
 C. C. Matheney, Shelby, N. C.
 H. E. Waldrop, Shelby, N. C.
 W. A. Elam, Shelby, N. C.
 W. P. Biggerstaff, Shelby, N. C.
 A. M. Kiser, Waco, N. C.
 A. M. Kiser, Waco, N. C.
 Floyd Holler, Kings Mountain, N. C.
 J. L. Jenkins, Boiling Springs, N. C.
 Jesse Blalock, Shelby, N. C., Route 4

KINGS MOUNTAIN BAPTIST ASSOCIATION

CHURCHES

Beaver Dam
Bethlehem
Boiling Springs
Buffalo
Carpenter's Grove
Casar
David
Double Shoals
Double Springs
Elizabeth
Fallston
Flint Hill
Grover
Kings Mountain, First
Kings Mountain, Second
Kings Mountain, Macedonia
Lattimore
Lawndale
Love Valley
Mt. Sinai
Mulls Chapel
New Bethel
New Hope
New Prospect
Normans Grove
North Brook
Oak Grove
Oak View
Polkville
Patterson Grove
Patterson Springs
Pleasant Grove
Pleasant Hill
Pleasant Ridge
Poplar Springs
Ross Grove
Sandy Plains
Shelby, First
Shelby, Second
Shelby, Bethel
Shelby, Calvary
Shelby, Dover
Shelby, Eastside
Union
Waco
Wallace Grove
Zion
Zoar

SUPERINTENDENTS & POST OFFICES

E. D. Humphries, Shelby, N. C., Rt. 4
John Randall, Kings Mountain, N. C.
J. D. Huggins, Boiling Springs, N. C.
P. M. Hord, Shelby, N. C., Rt. 1
S. T. Carpenter, Belwood, N. C.
O. T. Carpenter, Casar, N. C.
A. A. Jolly, Kings Mountain, N. C.
C. M. Spangler, Shelby, N. C., Box 61
Fred E. Green, Shelby, N. C., Rt. 4
John R. Mauney, Shelby, N. C.
E. A. Hoyle, Fallston, N. C.
Carl Weaver, Shelby, N. C., Rt. 2
T. S. Keeter, Grover, N. C.
W. F. McGill, Kings Mountain, N. C.
J. C. Gladden, Kings Mountain, Rt. 2
W. D. Byars, Kings Mountain, N. C.
Paris Weathers, Lattimore, N. C.
J. W. Towery, Lawndale, N. C.
No Sunday School
C. S. Bridges, Shelby, N. C., Rt. 2
Woodrow McIntire, Shelby, N. C., Rt. 5
J. D. S. Carpenter, Lawndale, N. C.
J. A. Hallman, Earle, N. C.
E. G. Clark, Shelby, N. C., Rt. 1
W. T. Warlick, Lawndale, N. C., Rt. 2
A. F. Houser, Vale, N. C., Rt. 2
W. C. Blanton, Kings Mountain, Rt. 2
O. E. Jolly, Kings Mountain
A. Y. Warlick, Lawndale, N. C., Rt. 1
L. B. Scism, Kings Mountain, N. C.
Edwin Camp, Grover, Rt. 1
C. E. Elliott, Shelby, N. C., Rt. 5
Frank Cornwell, Shelby, N. C., Rt. 2
H. R. Early, Lattimore, N. C.
J. D. Elliott, Shelby, N. C., Route 3
L. H. Ledford, Shelby, N. C.
L. F. Jenkins, Shelby, N. C., Rt. 4
Horace Easom, Shelby, N. C.
Riviere Beam, Shelby, N. C., Martin St.
R. W. McAbee, Shelby, Shannonhouse St.
Evans Green, Shelby, N. C.
Roy Newton, Shelby, N. C.
E. R. Beheler, Shelby, N. C., Palmer St.
George M. Gold, Shelby, N. C., Rt. 5
W. N. Pope, Waco, N. C.
C. M. Owens, Shelby, N. C., Rt. 5
J. F. Lutz, Shelby, N. C.
Lyman Humphries, Shelby, N. C., Rt. 3

KINGS MOUNTAIN BAPTIST ASSOCIATION

CHURCHES

Beaver Dam
Bethlehem
Boiling Springs
Buffalo
Carpenter's Grove
Casar
David
Double Shoals
Double Springs
Elizabeth
Fallston
Flint Hill
Grover
Kings Mountain, First
Kings Mountain, Second
Kings Mountain, Macedonia
Lattimore
Lawndale
Love Valley
Mt. Sinai
Mulls Chapel
New Bethel
New Hope
New Prospect
Normans Grove
North Brook
Oak Grove
Oak View
Polkville
Patterson Grove
Patterson Springs
Pleasant Grove
Pleasant Hill
Pleasant Ridge
Poplar Springs
Ross Grove
Sandy Plains
Shelby, First
Shelby, Second
Shelby, Bethel
Shelby, Calvary
Shelby, Dover
Shelby, Eastside
Union
Waco
Wallace Grove
Zion
Zoar

CHURCH CLERKS & POST OFFICES

E. D. Humphries, Shelby, N. C., Rt. 4
J. C. Randall, Kings Mountain, N. C.
A. I. Jolley, Boiling Springs, N. C.
C. L. Ballard, Shelby, N. C., Rt. 1
S. T. Carpenter, Belwood, N. C.
H. E. Peeler, Lawndale, N. C., Rt. 1
T. J. Falls, Kings Mountain, N. C.
Mrs. A. P. Spangler, Shelby, N. C., Rt. 5
J. S. Gillispie, Shelby, N. C., Rt. 4
Chas. W. Spake, Shelby, N. C.
J. C. Royster, Shelby, N. C., Rt. 5
J. R. Ledbetter, Shelby, N. C. Rt. 2
Carley Martin, Grover, N. C.
Mrs. J. E. Tate, Jr., Kings Mountain
Samuel T. McAbee, Kings Mtn., Box 722
Mrs. O. K. Kiser, Sr., Kings Mtn., N. C.
Chas B. Hamrick, Shelby, N. C., R-3
C. D. Forney, Sr., Lawndale, N. C.
Mrs. Maggie Mullinax, Kings Creek, S. C.
C. V. Harrill, Shelby, N. C., Rt. 2
Nelson T. Queen, Shelby, N. C., Rt. 5
Frank Spurling, Lawndale, N. C.
W. D. Earl, Earle, N. C.
E. G. Clark, Shelby, N. C., Rt. 1
Lloyd Boggs, Lawndale, N. C., Rt. 2
Z. Z. Warlick, Vale, N. C., Rt. 3
Mrs. Sam Lovelace, Kings Mtn., Rt. 2
Mrs. J. E. Bumgardner, Jr., Kings Mtn.
Griffin Davis, Shelby, N. C., Rt. 4
Marjorie Scism, Kings Mountain, Rt. 1
Mrs. Mozelle McSwain, Shelby, Rt. 2
V. A. Gardner, Shelby, N. C., Rt. 5
J. C. Lowery, Shelby, N. C., Rt. 2
G. Z. Hamrick, Lattimore, N. C.
A. T. Hamrick, Shelby, N. C., Rt. 3
Nestor G. Hamrick, Shelby, N. C.
H. H. Grayson, Shelby, N. C., Rt. 4
Horace B. Easom, Shelby, N. C.
Mrs. W. H. Champion, Shelby, N. C.
Pauline Green, Shelby, N. C., Broad St.
Sylvanus Gardner, Shelby, N. C., Clegg St.
W. C. Cartee, Shelby, N. C., Rt. 4
E. R. Beheler, Shelby, N. C., Palmer St.
Elmer Withrow, Shelby, N. C., Rt. 5
S. L. Dellinger, Shelby, N. C., Rt. 1
Odus Walker, Lawndale, N. C., Rt. 3
G. T. Cabiness, Shelby, N. C., Rt. 5
Mrs. Charles Warren, Shelby, N. C., Rt. 3

KINGS MOUNTAIN BAPTIST ASSOCIATION

CHURCHES

Beaver Dam
 Bethlehem
 Boiling Springs
 Buffalo
 Carpenter's Grove
 Casar
 David
 Double Shoals
 Double Springs
 Elizabeth
 Fallston
 Flint Hill
 Grover
 Kings Mountain, First
 Kings Mountain, Second
 Kings Mountain, Macedonia
 Lattimore
 Lawndale
 Love Valley
 Mt. Sinai
 Mulls Chapel
 New Bethel
 New Hope
 New Prospect
 Normans Grove
 North Brook
 Oak Grove
 Oak View
 Polkville
 Patterson Grove
 Patterson Springs
 Pleasant Grove
 Pleasant Hill
 Pleasant Ridge
 Poplar Springs
 Ross Grove
 Sandy Plains
 Shelby, First
 Shelby, Second
 Shelby, Bethel
 Shelby, Calvary
 Shelby, Dover
 Shelby, Eastside
 Union
 Waco
 Wallace Grove
 Zion
 Zoar

REGULAR TREASURERS AND POST OFFICES

W. H. Humphries, Shelby, N. C., R-4
 M. V. Logan, Kings Mountain, N. C.
 J. L. Lovelace, Boiling Springs, N. C.
 C. L. Ballard, Shelby, N. C., R-1
 Mrs. S. A. Sain, Lawndale, N. C., R-3
 A. A. Richards, Casar, N. C.
 L. A. Harmon, Kings Mountain, R-3
 S. B. Eskridge, Shelby, N. C.
 L. R. Hawkins, Shelby, N. C., R-5
 S. B. Wilson, Shelby, N. C.
 G. S. Royster, Shelby, N. C.
 L. N. Harrill, Shelby, N. C., R-2
 B. F. Bird, Grover, N. C.
 Mrs. J. E. Tate, Jr., Kings Mtn., N. C.
 S. O. Kirby, Kings Mountain, N. C.
 Mae Sneed, Kings Mountain, N. C.
 Margaret Lattimore, Lattimore, N. C.
 Mrs. F. L. Rollins, Lawndale, N. C.
 Mary Van Dyke, Kings Mtn., R-2
 W. H. Putnam, Shelby, N. C., R-2
 Pearl Turner, Shelby, N. C., R-5
 J. D. S. Carpenter, Lawndale, N. C.
 R. L. Nichols, Earle, N. C.
 Paul Hord, Shelby, N. C., R-1
 W. M. Lovelace, Belwood, N. C.
 T. G. Lackey, Cherryville, N. C., R-1
 James S. Ware, Kings Mountain, R-3
 T. L. Spearman, Clover, S. C., R-1
 Fred Mintz, Lawndale, N. C., R-1
 Loyd Phifer, Kings Mountain, N. C.
 Mildred Camp, Shelby, N. C., R-2
 Posie Hamrick, Lawndale, N. C., R-2
 Joe Beam, Shelby, N. C., R-2
 A. Y. Hamrick, Lattimore, N. C.
 Purvis Wesson, Shelby, N. C., R-2
 L. H. Ledford, Shelby, N. C.
 T. O. Wiggins, Shelby, N. C. R-4
 J. L. Suttle, Shelby, N. C.
 T. G. Bumgardner, Shelby, N. C., Box 659
 G. W. Harris, Shelby, N. C., Dodd St.
 Roy Panther, Shelby, N. C.
 G. H. Dover, Shelby, N. C.
 M. S. Crapps, Shelby, N. C., Dover St.
 Clyde Blanton, Lawndale, N. C., R-1
 U. A. Black, Waco, N. C.
 Odus Walker, Lawndale, N. C., R-3
 G. P. Irvin, Shelby, N. C., R-5
 C. L. Allen, Shelby, N. C., R-3

KINGS MOUNTAIN BAPTIST ASSOCIATION

CONSTITUTION

PREAMBLE: We, the messengers of Baptist churches in the County of Cleveland, State of North Carolina, and territory adjacent thereto, do hereby propose to establish and maintain the order and rules of a district Association in conformity to the following plan:

ARTICLE 1. The name of this organization shall be Kings Mountain Baptist Association.

ARTICLE 2. The membership of the Association shall consist of such messengers as may be selected by the churches comprising it and duly certified to in the annual letters sent by the churches to the appointed meetings, the basis of representation being two messengers for each church having a membership not exceeding fifty, and one additional messenger for each increase of fifty or major fraction thereto in church membership. All pastors serving constituent churches together with all regularly ordained ministers holding membership in these churches shall also be members of the body. The courtesies of the floor may be extended to representatives of the denominational interests, and also to ministers and members of other Christian organizations.

ARTICLE 3. The Association shall meet annually, the time and place being determined at the previous session; and each annual meeting shall organize itself by enrolling its membership, and by electing from its membership the following officers: Moderator, Vice-Moderator, Clerk, Treasurer, and Historian, whose duties shall be to serve in the usual capacity of such officers and who shall hold office, unless duly deposed by the electing body, until their respective successors are elected.

AMENDMENT (1): At the discretion of the Association, all officers may be elected at the close of one session to serve until the close of the succeeding one.

AMENDMENT (2): There shall be a Nominating Committee appointed at each session to serve during the coming year. This committee shall come to the Association prepared to make the usual nominations.

ARTICLE 4: At each annual session a General Board shall be appointed by the Association, which Board shall consist of the general officers of the body together with the superintendents of the S. S. and W. M. U. Work, the president of the B. Y. P. U. Convention, the president of Boiling Springs Junior College, the pastor of each church composing the Association, and two members from each church, which members shall be nominated by the church or by delegates present from the church and approved by the Association. This Board shall hold meetings either monthly or quarterly and shall exercise the functions and discharge the duties usually committed to an executive board or committee. At its discretion it may select out of its own number an

KINGS MOUNTAIN BAPTIST ASSOCIATION

Executive Board of not less than seven members to act in its behalf between sessions of the full board.

The purpose and plans of this General Board in all its meetings shall be to promote the interests and carry forward the work of the Association and of its constituent churches as this work is outlined in Article 5 of the constitution. The Board may select a time and place and arrange a program for holding extra sessions of the Association for inspirational and devotional meetings. In case of emergency it may also arrange for special business sessions of the body; provided, however, that no action taken in such extra business sessions shall conflict with any action of a previous regular sessions, and provided further, that the business of such extra sessions shall be limited to the object for which it was convened, and the membership of such special business sessions shall be made up of the messengers elected by the churches and accredited to the previous regular session.

ARTICLE 5: The prime purpose of this Association shall be to counsel together for the enlargement and strengthening of God's Kingdom by promoting unity and growth among the churches composing it, and by co-operating with the programs of the State Baptist Convention and the Southern Baptist Convention in the work of Missions, Christian Education, and Social Service, and any and all other objects. At each annual meeting one or more delegates shall be elected to represent this body in the ensuing sessions of these conventions.

ARTICLE 6. The Association may receive other churches into its fellowship on letters of dismission from other like organizations. It may also receive newly constituted churches whose articles of faith harmonize with the Confession of Faith attached hereto and whose practice conforms to the purpose of this Association as set forth in Article 5 above.

ARTICLE 7. While disclaiming the right or authority to interfere in the affairs of any local church, this Association asserts its privilege of using its discretion in receiving churches into its fellowship, and in withdrawing fellowship from any church found on careful investigation to be walking in disorder or failing in practice to endorse and support the missionary and benevolent work of the Baptist denomination.

ARTICLE 8. This Association shall conduct its business sessions in accordance with parliamentary practice as set forth in any well-authenticated book dealing with the subject.

ARTICLE 9. This Constitution may be changed or amended at any regular meeting of the Association; provided, however, that each proposed change or amendment be submitted in writing on the first day of the session to be voted on during the day following, and two-thirds of the members present shall concur in its adoption.

KINGS MOUNTAIN BAPTIST ASSOCIATION

Executive Board of not less than seven members to act in its behalf between sessions of the full board.

The purpose and plans of this General Board in all its meetings shall be to promote the interests and carry forward the work of the Association and of its constituent churches as this work is outlined in Article 5 of the constitution. The Board may select a time and place and arrange a program for holding extra sessions of the Association for inspirational and devotional meetings. In case of emergency it may also arrange for special business sessions of the body; provided, however, that no action taken in such extra business sessions shall conflict with any action of a previous regular sessions, and provided further, that the business of such extra sessions shall be limited to the object for which it was convened, and the membership of such special business sessions shall be made up of the messengers elected by the churches and accredited to the previous regular session.

ARTICLE 5: The prime purpose of this Association shall be to counsel together for the enlargement and strengthening of God's Kingdom by promoting unity and growth among the churches composing it, and by co-operating with the programs of the State Baptist Convention and the Southern Baptist Convention in the work of Missions, Christian Education, and Social Service, and any and all other objects. At each annual meeting one or more delegates shall be elected to represent this body in the ensuing sessions of these conventions.

ARTICLE 6. The Association may receive other churches into its fellowship on letters of dismission from other like organizations. It may also receive newly constituted churches whose articles of faith harmonize with the Confession of Faith attached hereto and whose practice conforms to the purpose of this Association as set forth in Article 5 above.

ARTICLE 7. While disclaiming the right or authority to interfere in the affairs of any local church, this Association asserts its privilege of using its discretion in receiving churches into its fellowship, and in withdrawing fellowship from any church found on careful investigation to be walking in disorder or failing in practice to endorse and support the missionary and benevolent work of the Baptist denomination.

ARTICLE 8. This Association shall conduct its business sessions in accordance with parliamentary practice as set forth in any well-authenticated book dealing with the subject.

ARTICLE 9. This Constitution may be changed or amended at any regular meeting of the Association; provided, however, that each proposed change or amendment be submitted in writing on the first day of the session to be voted on during the day following, and two-thirds of the members present shall concur in its adoption.

CONFESSION OF FAITH

1. We believe the Scriptures of the Old and New Testaments to be a divinely inspired revelation from God.

2. We accept the New Testament alone as revealing the only plan of salvation and as the final authority in all matters of church policy and practice.

3. We believe Jesus Christ as revealed in the New Testament to be the Son of God and the divine Savior of all who truly accept Him as such.

4. We believe in the personality of the Holy Spirit, and in His abiding presence with the spirit of all the elect of God, in His quickening presence with the spirit of the unregenerate moving to repentance and faith, in His witnessing presence with the spirit of the regenerate comforting and guiding throughout life, in His sustaining presence in the experience of death, and in His continuing presence in the life to come.

5. We believe salvation is attained through spiritual regeneration in the act of repentance and acceptance of Jesus as Savior.

6. Since spiritual redemption was made available by the death, burial and resurrection of Jesus, we believe that every regenerate person should symbolize his own salvation by being buried with Him in baptism.

7. We believe that a local church modeled after the New Testament order is a company of regenerate persons voluntarily joined together for the purpose of extending God's Kingdom on earth.

8. We believe that each church should from time to time, as a congregation, celebrate the Lord's Supper as a memorial to Him.

9. We believe in the ultimate triumph of God's Kingdom over all opposing powers, and that every regenerate soul shall have a share in that triumph.

KINGS MOUNTAIN BAPTIST ASSOCIATION

MESSENGERS FOR 1942 SESSION

Only Delegates that registered are listed.

BEAVER DAM—Walter Black, F. C. McGinnis, Mrs. Gilbert McGinnis, W. H. Humphries.

BETHLEHEM—W. G. Camp, Mrs. C. C. Whisnant, B. P. Dixon, H. K. Dixon, J. D. Blalock, J. S. McSwain, C. A. Spearman, Mrs. B. P. Dixon.

BOILING SPRINGS—J. L. Jenkins, Hubert C. Dixon, C. C. Good, M. A. Jolly, Miss Unie Hamrick, C. I. Putnam, Geo. Hamrick, E. B. Hamrick, Mrs. O. P. Hamrick, O. P. Hamrick, Miss Nola Patric, Roy B. Green.

BUFFALO—J. P. Clark, C. L. Ballard, P. M. Hord.

CARPENTERS GROVE—L. W. Cain, J. G. Carpenter, T. C. Ledford.

CASAR—A. A. Richard, Miss Mary Lou Richard.

DAVID—D. F. Putnam, J. D. Harmon, Luther McSwain.

DOUBLE SHOALS—C. R. Spangler, Mrs. C. R. Spangler, Clyde Cornwell, H. H. Spangler, Yates Williams.

DOUBLE SPRINGS—J. S. Gillispie, D. R. Washburn.

ELIZABETH—W. A. Roberts, S. Lester Roberts, Mrs. Zeb Cline, Mrs. John R. Mauney, Mrs. T. C. Gardner, T. C. Gardner.

FALLSTON—Grady Royster, J. C. Royster, Mrs. Claud Stamey, Mrs. E. G. Sperling, D. E. Hoyle.

FLINT HILL—L. N. Harrill, Carl Weaver, Mrs. Graham Weaver, Mrs. Cleavy Hamrick, Ray Ledbetter, Miss Eloise Pearson.

GROVER—W. A. Hoffman, C. A. Mullinax

KINGS MTN. FIRST—A. G. Sargeant, Mrs. A. G. Sargeant, Mrs. Earl Ledford, Mrs. J. E. Tate, Jr., Mrs. R. C. Gold, Miss Viola White, G. A. Bridges, Mrs. W. F. McGill, Mrs. Isaac McGill, R. C. Gold.

KINGS MTN. SECOND—B. F. Austin, Mrs. S. O. Kirby, D. D. Lankford, W. W. Gladden.

KINGS MOUNTAIN MACEDONIA—C. B. Bobbit, A. C. Hughes, Mrs. C. B. Bobbitt.

LATTIMORE—C. C. Crow, N. B. Lee, Mrs. N. B. Lee, S. C. Harrill, Mrs. Lawton Blanton, Mrs. J. D. Blanton.

LAWNDALE—C. D. Forney, Sr., M. B. Hord, Mrs. W. D. Wesson, Mrs. G. C. Eskridge.

LOVE VALLEY—No delegates.

MT. SINAI—W. H. Putnam, Victor Hamrick, L. Y. Putnam, Ernest McGinnis.

MULLS CHAPEL—E. L. McDaniel, Woodrow McEntire, L. R. Whitaker.

NEW BETHEL—J. W. Suttle, David E. Beam, Odus Falls.

KINGS MOUNTAIN BAPTIST ASSOCIATION

- NEW HOPE**—S. H. Austell, B. Austell, R. L. Nichols, Charlie Wright, R. G. Turner.
- NEW PROSPECT**—D. M. Beam, E. G. Clark, Mrs. Yates Sperling.
- NORMANS GROVE**—John A. Hallman, O. H. Davis, W. T. Warlick, G. G. Rollins.
- NORTH BROOK**—Mrs. Z. Z. Warlick.
- OAK GROVE**—W. Luther Hawkins, Mrs. F. C. Ware, Mrs. W. A. Wright.
- OAK VIEW**—E. O. Gore, T. Ed Bumgardner, R. A. White, Miss Margaret White.
- POLKVILLE**—A. Y. Warlick, Mrs. Frank Shytte, Griffin Davis, Mrs. C. C. Warlick.
- PATTERSON GROVE**—Lloyd Phifer, Thomas Bridges, J. W. Scism, Mrs. Loyd Phyfer, Mrs. Frank Ware.
- PATTERSON SPRINGS**—G. M. Borders, Eli McSwain, Mrs. A. D. Allen, Mrs. Rollins Camp, E. B. Tessneer.
- PLEASANT GROVE**—V. A. Gardner, R. L. McSwain, Mrs. Bonnie Elliott.
- PLEASANT HILL**—W. W. Davidson, J. C. Fortenberry, Hubert Beam, J. W. Cornwell.
- PLEASANT RIDGE**—Jesse Blalock, Mrs. L. E. Green, Mrs. Thos. Ramsey, G. L. Hamrick.
- POPLAR SPRINGS**—J. R. Cantrell, Mrs. A. T. Hamrick.
- ROSS GROVE**—Lawrence Roberts, Mrs. Geo. E. Sperling, P. E. McSwain, N. G. Hamrick.
- SANDY PLAINS**—J. B. Price, Mrs. J. P. Walker, H. H. Grayson, P. A. Whisnant, T. O. Wiggins.
- SHELBY FIRST**—Zeno Wall, J. F. Ledford, S. A. Washburn, S. A. McMurry, Mrs. S. A. McMurry, Mrs. Lewis J. Bailey, Mrs. J. R. Misenheimer, Mrs. Herbert Toms, Mrs. W. L. Packard, Mrs. Rush Stroup, John P. Mull, D. A. Tedder, L. T. Hamrick.
- SHELBY SECOND**—L. L. Jessup, Mrs. L. L. Jessup, G. V. Hawkins, Azelia Roberts, Mrs. Worth Silvers, T. G. Bumgardner.
- SHELBY BETHEL**—C. C. Matheny, Mrs. Boyd Wilson, Mrs. Grover Howell, Hubert Hamrick, W. B. Wilson, W. H. Roberson.
- SHELBY CALVERY**—H. E. Waldrop, Mrs. H. E. Waldrop, R. L. Green, Evans Green, Sylvanus Gardner, J. S. Cook.
- SHELBY DOVER**—W. A. Elam, E. T. Bailey, H. C. Queen, W. L. Conner, Mrs. James Wright, Miss Ruby Chapman.
- SHELBY EASTSIDE**—W. P. Biggerstaff, M. S. Crapps, Mrs. D. E. McCraw, Mrs. F. T. Lawson, Mrs. E. R. Behealer, Mrs. Ollie Walker, Mrs. J. F. Ingle.
- UNION**—C. E. Witherow, Eula Witherow.

KINGS MOUNTAIN BAPTIST ASSOCIATION

WACO—A. M. Kiser, A. L. Devenny, W. N. Pope, Mrs. Heywood Moss, John Wacaster.

WALLACE GROVE—Clyde Owens, W. J. Owens.

ZION—G. T. Cabaniss, G. P. Irvin, Walter Davis, Grady Wilson, Laurel Hoyle.

ZOAR—O. L. McSwain, Mrs. O. L. McSwain.

VISITORS FROM OUTSIDE THE ASSOCIATION: M. A. Adams, Taylorsville, N. C.; Bobby Craig, Cherryville, N. C.; J. Rector Robbins, Holly Springs, N. C.; Rev. M. D. Blanton, Forest City, N. C.; Rev. W. L. Walters, Covington, Va.; I. G. Greer, Thomasville, N. C.; Dr. L. L. Carpenter, Raleigh, N. C.; Rev. D. M. Branch, Raleigh, N. C.; Rev. J. Bun Olive, returned missionary; Rev. Sylvester Elliott, Cherryville, N. C.; Rev. Carl Mauney, Clover, S. C.

PROCEEDINGS

The Ninety Second Annual Session of the Kings Mountain Baptist Association met on the regular schedule and promptly on time. The officers elected in 1941 were at their place. The Moderator, J. W. Suttle, called the association to order after a brief song service.

The opening devotional was led by W. G. Camp, reading from Psalms 148.

The association voted to proceed with the delegates that had registered and that as the others came and registered they would automatically be a member of that Body.

New pastors were recognized as follows B. F. Austin of Kings Mtn. Second.

The association voted to divide the sessions next year into two meeting places, one day at one church and the second day at another.

COMMITTEES

The following committees were announced by the Moderator:

- (a) ENROLLMENT—R. L. Green, Loyd Phyfer, S. H. Austell.
- (b) PLACE AND PREACHERS—A. A. Richard, Carl Weaver, L. F. King, B. Austell, John Wacaster.
- (c) TO NOMINATE ASSOCIATIONAL SUNDAY SCHOOL SUPERINTENDENT—Lawrence Roberts, C. R. Spangler, Paul Hamrick, A. F. Collins, V. A. Gardner.
- (d) TO NOMINATE B. T. U. DIRECTOR—H. E. Waldrop, Yates Williams, Luther McSwain, Mrs. A. G. Sargeant, Miss Mary Lou Richards.

Rev. Carl Mauney, former pastor of New Hope and at present located at Clover, S. C., led the congregation in singing, "Lord Plant My Feet On Higher Ground".

The first on the order of business was "Gardner-Webb Junior College", formerly known as Boiling Springs Jr. College. President P. R. Cantrell and Hon. O. M. Mull spoke in glowing and encouraging words about the present and the future of this growing College. A motion was made and seconded and counted that the College furnish a report to be placed in the Minutes of the association in the future.

H. B. Easom and Hon. O. M. Mull were asked to prepare suitable resolutions to be given to the friends who have had a leading part in the "new" Gardner-Webb College.

A double quartet from Gardner-Webb College under the direction of Miss Jessup rendered "There Is A Green Hill Far Away, And I Am Alpha and Omega".

The report on Sunday Schools was prepared and read by N. L. Whisnant, associational Superintendent. L. Bun Olive, returned mis-

KINGS MOUNTAIN BAPTIST ASSOCIATION

sonary who was in Japanese-occupied China for six months, was given the time for discussion. He gave a vivid description of his imprisonment and the opportunities he and his associates had in showing their "Loyalty To Christ." The Sunday School report is as follows:

SUNDAY SCHOOL REPORT

The call comes today in a dark and war torn world as never before for better Christian homes and a trained constituency. It was reported in one state that out of 1600 college graduates, they could not name four of God's prophets; 1,200 could not name three of the Disciples. It is said that out of every 100 non-church-members, 20 get divorces. Out of each 100 Christians only five get divorces.

As our boys spill their very life's blood for the preservation of our freedom and the opportunity to give the Gospel to a dying world, we should be winning the lost to Christ at home and getting ready for the open door when it comes.

I desire to thank each church and pastor for the splendid co-operation you have given the past year to the Sunday School work of the association.

We have held the past associational year six meetings in different parts of the association. The meetings haven't been as largely attended as we had hoped, however, we are encouraged to see the fine way some prepare to teach God's word. In these meetings the following have attended: Pastors 48, Teachers 129, Superintendents 65, Group Superintendents 3, Deacons 114, Secretaries 5, Churches represented 125, total attendance 747, average attendance 124½.

May I challenge you to go afield and work for Him who died for us, as never before. If each of us would join JUST one to Christ during the new associational year, we would soon see this world saved.

Respectfully,

N. L. WHISNANT.

The time having arrived for the annual Introductory sermon by W. P. Biggerstaff. Carl Mauney led the congregation in singing "All The Way My Savior Leads Me". L. L. Jessup led in prayer. The preacher read from Revelatiton 4 and 5. Subject: "The Throne of Grace and The King of Glory". The discussion was:

I.—THE THRONE OF GRACE.

- 1—Still available
- 2—Still Needed
- 3—Still Sufficient

II.—THE ONES ABOUT THE THRONE

- 1—The Elders—Victory
- 2—Praise around the throne
- 3—Worship around the throne

KINGS MOUNTAIN BAPTIST ASSOCIATION

III.—THE KING ON THE THRONE

- 1—His preaching power
- 2—His work of redemption
- 3—His worthiness

The association was dismissed for lunch to meet again at 1:30 p.m.

FIRST DAY—AFTERNOON SESSION

After a brief song service, B. F. Austin, new pastor of Kings Mtn. Second church, led in the praise and worship period. He read Psalms 11:1-6.

L. L. Jessup, chairman of Church History in the association, asked for information as to what steps to take in completing the history of the association. A motion was made to refer the matter to the General Board of the association.

The annual report of the Woman's Work was read by Mrs. John Wacaster. She also spoke to the report.

WOMAN'S MISSIONARY UNION REPORT

The theme of Woman's Missionary Union for the year is, "Thy will be done on earth". The hymn; The Light of the World is Jesus, and the watchword, "Oh send out thy light and thy truth".

With such an outline as this it's useless for me to say that Woman's Missionary Union according to both reports and statistics is going steadily forward.

Our watchword, "Oh send out thy light and thy truth", has been and will continue to be often on our lips and continually in our hearts through the days so fraught with anxiety for our world. They will help us to be more conscious of the responsibility of individual Christians in a time when darkness seems to have covered the earth.

The glorious promise of the prophet, Isaiah, will be remembered—Darkness shall cover the earth and grass darkens the peoples but Jehovah shall rise upon thee, and His glory shall be seen upon thee and nations shall come to thy light and kings to the brightness of thy rising.

It was a solemn responsibility that Jesus laid upon his disciples when he said, "Ye are the light of the world." It is Christ's design and purpose that you and I, that each of the host who has named His name and is called Christian will be mediums through which the light of life may shine, illuminating the world and driving away its darkness by the inherent power of light.

Jesus said, "I must work the works of Him who sent me while it is day" and it was He who said, "As the Father hath sent me, even so send I, you."

The motive of Woman's Missionary Union is expressed in the words of the poet who said:

His lamps are we
To shine where He shall say,

KINGS MOUNTAIN BAPTIST ASSOCIATION

And lamps are not for sunny rooms
Nor for the light of day
But for the dark places of the earth
Where shame and wrong and crime have birth,
Or for the murky twilight grey.
Where wandering sheep have gone astray
Or where the lamps of faith burn dim
Where souls are groping after Him.

We have in our association 92 organizations who are sending out His light and His truth.

As a proof of their love and devotion for the Master, and for the world, they gave over \$9,000 last year for missions. We have 65 organizations engaged in definite organized personal service, and we have 304 tithers. 134 mission study classes were held last year, and we have 91 memberships in the 100,000 club.

Our annual associational meeting was held with Pleasant Ridge church this year, a good program was given and the attendance was splendid. The names of the officers will appear elsewhere in the minutes, but may I ask for each of them your co-operation, interest, love and prayers,

Respectfully submitted,

MRS. JOHN WACASTER.

The report of the Co-operative program was read by J. L. Jenkins, and discussed by the writer and the following: D. F. Putnam, W. A. Roberts, W. A. Hoffman, D. M. Branch. The latter our North Carolina missionary.

THE COOPERATIVE PROGRAM

The Cooperative Program is the plan of Southern Baptists for enlisting all our people in the intelligent, systematic, proportionate and adequate support of all our work.

Both State and Southwide causes are included. The State Conventions determine the ration of the state funds to the different state causes and the percentage to these. The distribution for 1942 is as follows:

State Objects—60%		Southwide Objects—40%	
State Missions	17%-	Foreign Missions	20%
Education-Debt Service ...	35%	Home Missions	9.33%
Hospital	5%	Relief and Annuity Board	4.14%
Ministerial Education	1%	Seminaries and W.M.U.	
Ministers Retirement		Training Schools	5.65%
Fund	2%	Southern Baptist Hospital	.88%
	<hr/>		<hr/>
	60%		40%

KINGS MOUNTAIN BAPTIST ASSOCIATION

The Cooperative Program has grown in favor with our people with the passing years. Ever since it was established the debts on our denomination have been reduced every year.

We commend:

1. That the Every Member canvass for the support of the local work and denominational causes as included in the Cooperative Program be put on in all our churches, preferably in November and December.

2. That careful and prayerful preparation be made for the Every Member canvass by sermons, addresses, schools of missions and stewardship, and the use of literature, including subscription cards, which can be obtained from the office of the State Secretary at a small cost.

3. That a reasonable distribution of funds be observed between local support and denominational causes (50-50 being considered ideal).

4. That each church help in the realization of "a debtless denomination before 1945" through support of the Hundred Thousand Club.

5. That the special days provided for in the Calendar of Denominational Activities be observed primarily as a means of informing our people concerning our denomination work and institutions, that free will offerings be taken on these special days.

6. That Christian stewardship with the tithe as the minimum standard of Christian giving be stressed continually.

7. That all denominational funds be remitted promptly and properly marked each month to the state headquarters.

J. L. JENKINS, Chairman.

The association adjourned until 7:30 the same night when the B. T. Hour and the Doctrinal sermon would be heard.

THURSDAY NIGHT SESSION

The opening song service was in charge of Roy Propst of Zion church. Prayer by D. F. Putnam. The B. T. U. report was read by Jno. A. Hallman, Associational President. Those appearing on the program were J. S. Cook, J. P. Thomas, Miss Maxine Cabaniss, Millard Hall, Mrs. Hubert Dixon, W. P. Biggerstaff.

BAPTIST TRAINING UNION REPORT

Growth or development is one of the characteristics of Christian discipleship. Any phase of the life of a Christian church, that does not contribute to the enrichment of Christian personality, is not worthy of its place in the program. However, it is the SPECIAL mission of the Baptist Training Union to promote Christian growth and usefulness. The person, who avails himself of this opportunity, will be informed about the program and doctrines of the denomination and will have some knowledge of the Book of books.

KINGS MOUNTAIN BAPTIST ASSOCIATION

Since it is one of the most testing time for men's souls in the world's history, the world needs Christian men and women who will intelligently and courageously stand for those things that will endure after guns of hate have ceased to roar and selfish potentates have been consumed as a result of their own selfishness. The Baptist Training Union offers an opportunity for the growth and development of dynamic Christian character. Therefore it is very tragic when the church letters reveal the fact that eighteen of our forty-eight churches do not have a Training Union organization of any kind. A little more than one third of our churches are mission opportunities. When one sees a total of a little more than 1,500 enrolled in the Baptist Training Union in the Kings Mountain Association, another fact presents itself, that a little less than one out of every ten members in this great Association is enrolled in training.

However, there are some things that are very encouraging. The last Associational wide Conference and mass meeting sponsored by our board workers, was more largely attended and had more interest shown in it than any similar meeting in recent years. The Association wide study course in March was a great success, if not quite 100%. Three of the new Training Unions begun during the year were organized in very strategic places.

Our government selects choice men for its armed forces and inspires their patriotism and enthusiasm in various ways. Then the best food and equipment available is provided for these men. With all these things, they would be very poor ineffective soldiers without proper training. In the army of the Lord, the worship service may secure enlistment and inspire great loyalty and devotion. The new recruit may be given the best spiritual food and equipment as the Sunday School feeds him the bread of life and equips him with the Sword of The Spirit. However, without proper training in the skill of using himself and his weapons, he would be a very poor, ineffective soldier of the Cross. The Baptist Training Union stands ready to enrich the lives of Christians of all ages and to glorify the Master's name.

Respectfully submitted,

JNO. A. HALLMAN

Associational Training Union Director

A. G. Sargeant delivered the annual Doctrinal sermon. His subject was "The Fort of Christian Worship".

The closing prayer was led by Mr. Sargeant.

SECOND DAY SESSION

The association met promptly at 9:30 a.m. Song—"Come Thou Almighty King". Rev. C. B. Bobbitt, new pastor of Macedonia, had charge of the "Praise and Prayer" worship. He read Psalms 103, commenting on Things To Be Thankful For. Song, "Praise Him, Praise Him."

KINGS MOUNTAIN BAPTIST ASSOCIATION

L. L. Jessup made a motion that messages of love and sympathy be sent to Rev. D. G. Washburn, Rev. W. G. Camp and Mrs. W. A. Elam, wife of Pastor Elam. The clerk promptly sent the messages.

The following reports were submitted by the Clerk-Treasurer.

TREASURER'S REPORT FOR 1941-42 ASSOCIATIONAL YEAR

RECEIPTS:

Balance in Union Trust Co. (Lawndale) Oct. 1, 1941	\$ 34.22
Received for Minute Money	209.75
Total Receipts	\$243.97

DISBURSEMENTS:

To Record Publishing Co. for Minutes and Postage	\$142.85
To E. R. Abernathy, Charlotte, for Multistamp Supplies	4.25
To Stipulated Clerks hire	50.00
To Postage and Office Supplies	6.25
To M. A. Huggins	5.00
To Balance in Treasury Oct. 1, 1942	35.62
Total	\$243.97

J. W. COSTNER, Treasurer.

A DIGEST OF THE CHURCH LETTERS SUNDAY SCHOOLS

Sunday School Enrollment 1940-41	11,126
Sunday School Enrollment 1941-42	11,312
Gain of	186
Average attendance in Sunday School in 1940-41	6,015
Average attendance in Sunday School in 1941-41	

BAPTISMS

Baptisms in 1940-41	544
Baptisms in 1941-42	529
Loss in Baptisms	15
Number of Churches reporting no Baptisms	3
The three churches that led in Baptisms—Shelby First 64, Polkville 35, Oak Grove 28.	

CHURCH MEMBERSHIP

Church Membership in 1940-41	15,446
Church Membership in 1941-42	15,602
Gain of	156
Exclusions from the churches in 1941-42	10
Erasures from the churches in 1941-42	110

CONTRIBUTIONS

Contributions in 1940-41	\$145,843.57
Contributions in 1941-42	197,570.77

KINGS MOUNTAIN BAPTIST ASSOCIATION

Gain of	51,727.20
Given to Missions and Benevolences in 1940-41	\$ 27,316.74
Given to Missions and Benevolences in 1941-41	71,120.84
Gain of	43,804.10
Given to Co-operative program in 1940-41	\$ 7,892.68
Given to Co-operative program in 1941-42	9,252.24
Gain of	1,259.56

J. W. COSTNER, Clerk-Treasurer.

The General Board of the Kings Mountain Baptist Association has met regularly with the exception of the months of July and August. The attendance has been very small each month. In its last monthly meeting the Board unanimously voted to recommend to the association in its annual session at New Hope Church to hold the 1942-43 session with two churches instead of one, giving the evening session with the church when the first day session is held.

The First Baptist Church of Shelby and its pastor, Dr. Zeno Wall, have been very cordial in allowing the Board to meet in their church during the year.

Respectfully,

J. W. COSTNER, Secretary of Board.

The report on the Baptist Hospital was read by A. M. Kiser. It was held open to give time for a representative of the Hospital to speak to if and when he arrived. No one came to speak to the report.

REPORT ON HOSPITAL

When we examine the earthly teaching of Jesus we are impressed with His deep concern for the welfare of all humanity. It is true that that His chief concern was for the spiritual life of man, but he knew that a healthy body usually constitutes the best temple of the soul. Hence we find Him always alert to supply man's every need. He was quick to see and eager to relieve the human suffering which he found when he taught by the sea, on the hillsides, in their homes or with individuals in the quiet places of Palestine. Early in His ministry as he taught in the synagogue he rebuked the unclean spirit who recognized him as the "Holy One of God". Likewise he healed Simon's mother-in-law, and cleansed many lepers. Morning, noon and night the Great Physician looked on the multitude and was "moved with compassion toward them and he healed their sick" (Matt .14-14). Most of his miracles are miracles of bodily healing. Dr. Bristow, superintendent of our Southern Baptist Hospital, tells us that of the thirty-eight detailed miracles of Christ twenty-nine are miracles of bodily healing.

At the close of his ministry Jesus taught his disciples to continue this healing ministry. Luke, also a physician, records that when he sent the twelve he instructed them to "preach the Kingdom of God and heal the sick." (Luke 9-2) After Christ's ascension to the father

KINGS MOUNTAIN BAPTIST ASSOCIATION

the disciples carried out these instructions. John, by the power of God, gave the lame man at the gate of the temple that which silver and gold could not buy; the ability to "rise up and walk." Philip in Samaria brought joy when he "preached Christ unto them", and healed unclean spirits, the lame and the palsied. Paul was mistaken for one of the "gods" at Lystra because the true God gave him power to command the lame man to stand upon thy feet". (Acts 14:8-14) Likewise at Ephesus, "God wrought special miracles at the hands of Paul. (Acts 19:12).

The disciples of today may not be able to perform special miracles, but God can and does use human agency in his healing ministry and to share his compassion for human suffering. He can guide the hand of every surgeon and nurse, and sanctify all the medicine to the healing of disease. The Baptists of North Carolina realized that when they organized our Baptist hospital located at Winston-Salem. They wanted his disciples in North Carolina to have an opportunity to share the compassion of Christ for suffering humanity by giving of their money for its support. As our Superintendent Brother Hagamon has said, "The purpose of the hospital shall remain as ever—to give hospital treatment to those who are unable to pay for same, educate nurses with Christian ideals, and at the same time maintain a standard of scientific efficiency "second to none in the country". It is the abiding purpose of the management that it shall be definitely a Christian Institution with all that it implies." During the last three years North Carolina Baptists have caught his spirit and have given generously to the expanding program of their hospital. Three years ago the hospital had a bed capacity of one hundred, and by overcrowding, we were able to care for more than four thousand patients per year. Today, we have modernly constructed and equipped hospital with a bed capacity of almost ten thousand patients annually, and now caring for about six hundred and fifty patients per month. Owing to a shortage of nurses, caused by war conditions, the hospital has been unable to open a few rooms. This year not less than 2,500 service or free patients shall have been admitted to our hospital. This will represent, including hospital and medical service, about \$250,000 in free service for this year. The hospital has a staff of 26 internes and about 100 doctors practising in the hospital, in addition, it has the free service of the entire medical school whenever desired for consultation and diagnosis. Every department is thoroughly organized to give the most efficient service possible. The equipment, as well as the building, is entirely modern. The hospital recently added \$20,000 worth of new instruments to the operating rooms and \$44,000 worth of new X-ray equipment, making an X-ray department "none better in the South". The hospital, in conjunction with the medical school, has a floor space of four acres and represents a value to the denomination of \$2,000,000 with only a very small amount of indebtedness. This greatly expanded service which is growing more and more

KINGS MOUNTAIN BAPTIST ASSOCIATION

in every part of the state, of course, requires an increased support. This, according to our Superintendent, is growing year by year. The Mother's Day offering by churches and Sunday Schools increased in the last few years from \$11,500 to about \$38,000 this year. Also the hospital's linens contributed by the W. M. U. and other church agencies has increased year by year. May this increase be multiplied many fold, and let us work, pray and sacrifice that we may continue the healing ministry of Christ in a day when there are those who have no concern for the values of human life and who would sacrifice all on the altar of selfish ambitions and lust for power.

Respectfully submitted,

A. M. KISER

The report on Religious Literature was read by C. C. Matheny, who yielded his time to Dr. L. L. Carpenter, new editor of the Biblical Recorder. The people were greatly impressed with the new editor of the Recorder.

REPORT ON RELIGIOUS LITERATURE

"The pen", according to a well-known saying, "is mightier than the sword". But in these terrible days of war we may question the truth of this statement. Yet if we take the long view, remembering how the great words of pen and press have influenced the lives of men and women, we will not lose faith in the power of the pen. More precious than ever is the Bible with its assurance that the Lord Omnipotent reigneth and he who trusts in the Lord shall never be moved.

Denominational literature is or should be, simply a projection from the Bible. Our S. S. quarterlies are intended to help us understand and use for our spiritual growth selected passages of scripture. Our Missionary Journals are a stimulus to the carrying out of the Great Commission. Out of B. T. U. literature is a guide to service. And the Biblical Recorder is a vehicle of information about our work as well as a help to the churches in their task of preaching, teaching, and healing.

There are several reasons why we should circulate our Baptist publications:

1. The abundance of evil and pernicious books and magazines. One has only to look at news-stands to cry out—"There is death in the pot". They furnish the low grade literature that the people demand.
2. The wide-spread dissemination of false teachings. Over the radio, through the press and by spoken word, heretical sects ardently broadcasting their doctrines, and we must give the people the truth.
3. The breakdown in denominational loyalty. Once the great mass of our people were loyal to their church and its principles. They had no inclination to chase rainbows. Loyalty has to a large extent gone from our church people.

KINGS MOUNTAIN BAPTIST ASSOCIATION

4. We must ever seek to stimulate missionary and benevolent activity. Only an informed people will enthusiastically and persistently support missions around the world.

In closing this report I would like to commend the work of the American Bible Society in scattering the Bible to all nations and especially to our Armed Forces.

Respectfully submitted,
C. C. MATHENY

The report on Orphanages was read by Lawrence Roberts who yielded his time to I. G. Greer, superintendent of the N. C. Baptist Orphanage. Mr. Greer, instead of losing his vim and momentum, has gained as the years have gone by. Many said it was "the best yet".

THE REPORT ON THE BAPTIST ORPHANAGE OF NORTH CAROLINA

Since the day that the daughter of Pharaoh heard the cry of the baby, Moses, men and women have responded to its needs. The orphanage home for children without parents is primarily a Christian institution. Orphanages are established and maintained only where the gospel of Christ has been proclaimed. In proportion as the teachings of Christ are accepted and practiced by the followers of Christ, do these Christian groups give support to the orphan homes. The North Carolina Baptist operates two homes for orphan children, the Mills Home at Thomasville and the Kennedy home at Kinston, N. C.

The health record of the orphanage is unparalleled. This health record is attributed largely to the fact that the children are fed, clothed, exercised and sleep regularly. They work hard, play hard and study hard under proper supervision.

The orphanage is caring for three classes of children, full orphans, half orphans, and victims of wrecked and deserted homes. These services are being rendered through mother's aid, boarding home and the orphanage proper. Also, the case workers are rendering a fine service by helping children and parents make adjustment with neighbors and relatives.

The demands upon the orphanage have been great and will continue to increase as the days come and go. Let every church increase its offering each month. As we approach the Thanksgiving offering this year let each church make a noteworthy offering.

The Charity and Children is one of the best, if not the best, Christian publications that we can possibly read. May we continue to build up larger clubs of the Charity and Children in our Churches. The paper can be had for 60 cents per subscription—a copy in clubs of ten or more.

Respectfully submitted,
LAWRENCE ROBERTS

Song "What A Friend We Have In Jesus".

KINGS MOUNTAIN BAPTIST ASSOCIATION

The report on Public Morals was prepared and read by L. L. Jessup and presented in advance of the scheduled time in order to give M. A. Adams of the North Carolina Dry Forces time to speak. Mr. Adams always brings timely messages on the subject and shows that he is everlastingly on the job. A free will offering was taken to the amount of \$43.00. This was given to Mr. Adams.

PUBLIC MORALS

In considering the subject of Public Morals in time like these, it is inevitable that we should think first of War. It looms far above any other question which affects the welfare of human society. The right solution to the problem of war will solve many other problems. Unless we can maintain an attitude of peace and good will among the peoples of the earth, we can expect very little progress in any phase of moral living.

As strange as it may seem, the war situation has undoubtedly grown out of the fact that too much emphasis has been laid on good morals, rather than on good religion. We are suffering today because we tried yesterday to pave a highway with good works and noble intentions, rather than insisting on the way of Christianity as the only means of securing world peace. We have tried to save civilization by a foreign policy rather than by the Cross of Christ. Hence, it is inevitable that the house built upon the sands of human mistakes and misunderstandings should eventually fall. Some of our prominent men have realized this mistake as is shown by a statement made a few days ago by ex-Ambassador Grew, when he said "I have tried by every means I knew to establish honest business relations with the people of Japan, but each time my plans were frustrated by the military interests of that country who were only interested in world conquest". This is typical of statements of others who are realizing too late that we have been trying to win the world by a moral and economic program rather than by the missionary program laid down by Christ. We have stressed the brotherhood of man rather than the Saviourhood of Christ. True brotherhood can only be established by ties of blood, and we have left out the Blood of Christ in trying to establish international good-will.

Many earnest followers of Christ are debating the question as to whether a Christian may ever at any time, and under any circumstances, give his approval to war or take part in war. Hating war and all its horrors, deploring the necessity of wasting enormous natural resources, and man-power, we still believe that it is the duty of all citizens to support our government in providing adequate national defense. We can and must be patriotic, and stand by our country in its great emergencies, but at the same time we must recognize the reason for these emergencies, and cry out against sin wherever we may find it.

Along with the war situation, and closely allied to it, is that of intoxicating drink. Accumulating evidence reveals more and more that

KINGS MOUNTAIN BAPTIST ASSOCIATION

the liquor problem is still unsolved, in fact, it has become greater than ever. It has truly been called "the nation's most deadly fifth columnist." The wide open drinking places around army camps testify that the liquor interests care little for our national welfare, but seek only to make money where it is most plentiful.

One cannot but recall the promises made by those advocated the repeal of the Eighteenth Amendment—the promise that the saloon would never return, that drunkenness would decrease, that beer and wine would take the place of hard liquor, that the bootlegger would be forced out of business, that women would drink much less. Not one of these predictions have materialized, in fact from a temperance standpoint, our nation is worse off than it has ever been in its entire history. Leading magazines openly defy dry sentiment by accepting expensive liquor advertising, and making scornful references to activities of dry organizations.

However, in a situation that is far from perfect, there are encouraging signs that our citizens are at last awakening to the danger. Temperance forces are recognizing the value of education, and are turning their attention to the instruction of our youth in the evils of strong drink. Our Sunday School Board is giving much attention to this through its publications, and we urge our churches to avail themselves of the help they may receive in this way. We are further encouraged by the growing number of local communities throughout the land which are outlawing the sale of intoxicants by vote of the people. We look forward to our own State Legislature passing long delayed legislation which will permit the people of this state to vote on this momentous issue. We further urge our people to support the program of the United Dry Forces of North Carolina, and commend Mr. Cale K. Burgess for his aggressive work.

We would call attention further to undesirable conditions within the bounds of our own Association which tend to lower the moral level of our homes and communities. It is reported that some places of business frequented by our young people are allowed to maintain an indecent environment. Many of these places are within the bounds of our church communities, and vitally affect the efforts of our churches, as well as contributing to juvenile delinquency in our County. As older people, we are prone to condemn the waywardness of youth, while at the same time, we ourselves tolerate, and may even support, conditions which are making them wayward. The tendency toward ignoring the Lord's Day is becoming rapidly more prevalent with many places of business near our church doing a good business on Sunday, and being patronized by church people.

In conclusion, we respectfully submit for the consideration of this Association, the following recommendations:

That the General Board be instructed herewith to formulate expressions from this body as follows:

KINGS MOUNTAIN BAPTIST ASSOCIATION

First, a protest to the sale of intoxicating beverages in and adjacent to, training camps for men in the Armed Forces of our country, and that such protest be sent to our Senators and Congressman in Washington.

Second, that we go on record as favoring legislation for a referendum in the State of North Carolina, and that we so inform our local representatives to that effect.

Third, that we urge the Cleveland County Commissioners, and councils of the cities of Shelby and Kings Mountain, to pass legislation forbidding the sales of beer and wine on Sunday.

Fourth, that the General Board arrange a Field Day for the United Dry Forces as early in the year as possible, and that we urge all pastors and churches to cooperate.

Fifth, that we urge our people to conform to high standards of conduct concerning their moral and social activities, looking to Jesus Himself as the Great Example.

Respectfully submitted,

L. L. JESSUP.

The Missionary Sermon was delivered by C. C. Crow, host pastor. Brother Crow read from St. John 3 and 20. Using as a subject "God, The Author and Promoter of Missions." The message was well prepared and presented with power. At the close of the message the association adjourned for lunch.

SECOND DAY—AFTERNOON SESSION

Song—"My Savior's' Love". The association was called to order and the Moderator recognized Jesse Blalock who led in the Devotional period, reading from Isaiah 33.

At this time the Time, Place and Preacher Committee brought in their report: That the association for 1943 would meet on Thursday and Friday before the fourth Sunday in October 1943. The place was at Shelby First Church the first day and the night session, and the second day at Double Springs church.

The following resolution was offered by L. L. Jessup:

Whereas, our hearts have been made glad by the gracious hospitality of Pastor and people of New Hope Baptist church during the sessions of this Association, therefore be it resolved that we go on record as expressing our gratitude for the use of the spacious Church building, for the attractive pulpit decorations, for the beautiful meals which have been so freely spread before us, and all other expressions of Christian fellowship enjoyed by us as guests of this Church.

L. L. JESSUP.

The time having arrived for the election of officers to serve next year. Vice Moderator W. A. Elam arose to nominate the present Moderator J. W. Suttle and Clerk J. W. Costner, the motion was sec-

KINGS MOUNTAIN BAPTIST ASSOCIATION

onded by J. L. Jenkins, the election was unanimous. A motion by C. C. Crow that was seconded that the present Vice Moderator W. A. Elam be re-elected to serve next year. A motion by G. V. Hawkins and seconded by D. A. Tedder to raise the Clerk's salary from \$50.00 to \$100.00, the motion carried by a unanimous vote.

The report on "Ministers Retirement Fund" was prepared, read and spoken to by W. A. Elam.

REPORT ON MINISTERS' RETIREMENT FUND

The Relief and Annuity Board of the Southern Baptist Convention has been in operation for twenty four years. It was organized to assist, financially, old and disabled ministers and their dependents. The work of the Board Two-fold:—

First—To give assistance to old and disabled ministers who have no regular income provided.

Second—To co-operate with the ministers and churches in providing annuities when old and disabled. The minister pays a given per cent of his salary and his church a like sum to build up an annuity. Several plans were inaugurated from 1918 to 1938, some of which have been closed to membership because it was not deemed wise to continue.

The Board has had a marvelous growth. Beginning in 1919 with assets of \$106,428.53 and at the close of 1941 \$5,470,277.84. In 1938 a new plan was inaugurated by which each state convention in the Southern Baptist Convention set up its own plan, co-operating with the Relief and Annuity Board.

The Ministers' Retirement Plan is also making wonderful progress in each of the states. In these four years in all the Southern convention 6,888 members and 9,334 churches enlisted in the different plans out of a total of 11,725 pastors and 24,998 churches in the convention.

The North Carolina plan provided for the payment by the pastor of 4% of his salary each month and a like sum by the churches which he is serving, plus a small per cent given by the convention.

On July 10, 1942, there had been 368 ministers and 668 churches enlisted in the plan. There are about 841 active pastors and 2,578 churches in our state.

Space in the report will not permit a detailed table showing just what the income will be from the plan, but we can understand that it will be in proportion to the amount one pays into the fund and also the number of years in the plan, and also the length of time one has served in the denomination. Two recommendations:—

First—More money by the churches should be contributed to the Relief work alone.

Second—All pastors and churches in the convention should come into the plan at once.

W. A. ELAM.

KINGS MOUNTAIN BAPTIST ASSOCIATION

The report on "Christian Education" was prepared and read by W. W. Davidson, professor of Bible at Gardner-Webb College.

CHRISTIAN EDUCATION

All early efforts at education in the American Colonies, and in the United States, were deeply rooted in religious motives and Christian principles. Today, however, Christian Education is almost entirely limited to denominationally supported institutions.

Baptists are what they are largely because they have believed in and supported missions, benevolences, and Christian Education. Wake Forest College, for example, founded in 1834 is only four years younger than the Convention itself.

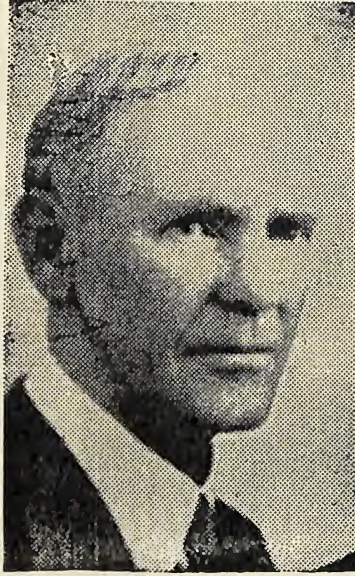
In the course of time as Baptists have grown, other institutions have come into existence, namely Chowan, Mars Hill, Meredith, Wingate, and Gardner-Webb. Baptists have believed in the necessity for trained and consecrated leadership. They have had no other way to secure such leadership except as they have built and supported Christian Colleges. They know of no other way now, and with the world growing well-nigh pagan in large areas, the need for such leadership is all the greater today.

Though working with poor equipment and inadequate support, all of our schools are making progress. The most recent report reveals that the total enrollment of college students in the institutions named above for the past year was 2,949 plus 175 high-school students and an additional summer school enrollment of 783. Of this number 234 were ministerial students and 154 were student volunteers. It is also gratifying to note that the total net property value, including endowment funds, plants, etc. is \$8,097,409.93.

The convention debt on these schools has been reduced from \$1,200,000.00 to \$400,000.00. Thus it appears that the value of the property owned is about 20 times as great as the amount of the money owed.

Finally, let it be added that no Baptist church can say that the welfare of these colleges is of no concern to it. For in a world such as ours is today, trained leadership is not only desirable but absolutely imperative. Let us support them, therefore, with our prayers, with our money, and by sending our boys and girls to them to be trained.

W. W. DAVIDSON.



REV. B. B. PARKS

who died May 24, 1942 and was buried at Elizabeth Baptist church where he was pastor or a number of years. At the time of his death he was pastor of Norman Grove and New Prospect churches.

KINGS MOUNTAIN BAPTIST ASSOCIATION

IN MEMORIAM

"Blessed are the dead which died in the Lord"

BEAVER DAM

R. C. Doggett

BETHELEHEM

P. C. Howell

BOILING SPRINGS

Mrs. Unie Hamrick

CARPENTERS GROVE

R. B. Downs

Cecil Propst

Mrs. Alice Swink

CASAR

Deacon A. M. Pruett

Bert Smith

DAVID

Mrs. D. A. McSwain

DOUBLE SPRINGS

W. J. Brooks

Mrs. Dale Gillispie

Mrs. T. B. Hamrick

ELIZABETH

Deacon J. L. Allen

Mrs. J. L. Allen

Mrs. Alice White

D. A. Cline

FALLSTON

M. L. Murry

GROVER

F. Z. Sheppard

KINGS MTN. FIRST

George M. Hull

J. E. Lipford

Houston Stowe

KINGS MTN. SECOND

John H. Harris

Paul Kirby

T. W. McSwain

Mrs. B. Y. Gibson

Mrs. Barbra Hancock

LATTIMORE

Deacon J. A. McBrayer

W. C. Harrill

Mrs. Rixie Harrill

W. T. D. Green

NEW BETHEL

Mrs. J. V. DeVenny

NEW HOPE

Mrs. W. M. Osborne

A. Bubin Blanton

F. G. Ellis

James L. Ellis

NORMANS GROVE

Rev. B. P. Parks, Pastor

NORTH BROOK

Sam Whisnant

OAK GROVE

Mrs. W. P. Lovelace

POLKVILLE

J. B. Dobbins

PATTERSON SPRINGS

Mrs. T. H. Lowery

J. W. Grigg

D. A. Blanton

PLEASANT GROVE

Denzie Hamrick

Clarence Watterson

Mrs. Ida Costner

Miss Dovie Vaughn

Miss Amelia Wright

Mrs. O. G. Glascoe

PLEASANT HILL

Deacon L. I. Kendrick

C. E. Camp

Mrs. Mae Thrift

PLEASANT RIDGE

Mrs. Ophelia Lewis

POPLAR SPRINGS

Mrs. J. W. Wesson

ROSS GROVE

Miss Cynthia Justice

SANDY PLAINS

J. M. Melton

Mrs. C. G. Bridges

Mrs. Charlotte Green

SHELBY FIRST

A. J. Dedmon

Stough Hopper

Victor Wray

Dwight Hoyle

W. H. Cantrell

Henry Rucker

KINGS MOUNTAIN BAPTIST ASSOCIATION

A. L. Brooks	SHELBY—DOVER
Mrs. J. B. Smalley	Mrs. M. L. Queen
Mrs. Nat Bowman	SHELBY—EASTSIDE
Mrs. A. P. Weathers	Deacon L. R. Carr
Mrs. M. A. McSwain	UNION
Mrs. Judith B. Eskridge	Mrs. Ben Powell
Mrs. W. T. Huntsinger	WACO
Miss Maude Bookout	Deacon J. F. Moss
SHELBY SECOND	Miss Mildred Sellers
Brady Parker	WALLACE GROVE
P. C. Beaty	Harvey Green
Mrs. P. B. Shields	ZION
Mrs. Lennie Beam	T. P. Cabaniss
Mrs. P. M. Bumgardner	ZOAR
Miss Jessie Hamrick	Cicero Allen
SHELBY—CALVARY	Farris Hamrick
Mrs. Lillie White	

The closing message of the association was delivered by Dr. Zeno Wall, pastor of the First Baptist Church of Shelby. Dr. Wall read from the Gospel of Luke 9:51 and Hebrews 12:12. His subject was "The Faces of Jesus". The message was one that sent the people back to their homes and places of service to do the will of The Heavenly Father.

The association adjourned to meet on Thursday and Friday before the fourth Sunday in October 1943 with Shelby First Church and Double Springs Church.

J. W. SUTTLE, Moderator

J. W. Costner, Clerk

ADDENDA

The New Hope church entertained the association in a fine way. Pastor Crow had something to crow over.

—o—

This was the fourth time the association had met with New Hope. In 1875, 1897, 1915 and 1942. Several stood saying they had attended all four of the sessions.

—o—

All the Church letters were in the hands of the Clerk when the association was called to order. Most of the churches returned the letters in advance. It is sincerely hoped that all churches will be prepared to mail their letters next year at least two weeks before the association. This will help in having the minutes printed soon after adjournment.

—o—

The three cents per church member will solve the financial problem. Please see that your church sends this amount each year.

—o—

Thanks to those who made reports on double spaced typewritten paper. Just a few papers had to be re-written this year. It makes it real hard to edit the Minutes when the people fail to co-operate.

—o—

Thanks to each Pastor, Clerk and Treasurer and all who had a part in helping get the Minutes of the churches to us in fair condition. It has been a great pleasure to serve you . . . God bless you.

YOUR CLERK.

KINGS MOUNTAIN BAPTIST ASSOCIATION

GIFTS FROM THE CHURCHES OF THE KINGS MOUNTAIN ASSOCIATION FOR GARDNER-WEBB COLLEGE FOR THE ASSOCIATIONAL YEAR 1941-42. (Not including expansion campaign gifts.)

Beaver Dam	\$ 187.50
Bethlehem	43.94
Boiling Springs	1,450.00
Calvary	8.79
Carpenter's Grove	135.62
Casar	24.00
Dover	534.00
Double Springs	358.62
Double Shoals	60.00
Eastside	258.00
Elizabeth	109.06
Fallston	72.48
Flint Hill	50.00
Grover	204.85
Kings Mtn. First	40.00
Kings Mtn., Second	34.34
Lattimore	81.81
Lawndale	140.00
Macedonia	25.00
Mt. Sinai	37.37
New Bethel	100.00
New Hope	109.63
New Prospect	10.00
Oak Grove	31.16
Patterson Grove	50.00
Patterson Springs	70.00
Pleasant Ridge	221.25
Pleasant Hill	100.00
Poplar Springs	45.41
Sandy Plains	147.04
Shelby, First	1,200.00
Shelby, Second	360.00
Waco	19.56
Zion	150.00
Zoar	10.00
TOTAL	\$6,479.43

J. T. IRVIN,
Associational Treasurer.

KINGS MOUNTAIN BAPTIST ASSOCIATION

MINUTES OF KINGS MOUNTAIN WOMAN'S MISSIONARY UNION—1942

The annual meeting of the Woman's Missionary Union of the Kings Mountain Association was held with the Pleasant Ridge Church, August 27, 1942. The meeting opened at 10:30 with Mrs. John Wacaster, superintendent, presiding and the opening hymn, "The Woman's Hymn" was followed by prayer offered by Rev. Jesse Blalock.

The Theme for discussion was "Light".

Mrs. L. H. Gibson of New Hope church led the morning devotion. She used for her subject a part of the forty-third Psalm, portraying Christ as the light of the world and showing also that we as Christians are lights to the world.

Upon motion of Miss LaLene Grigg the calling of the roll be omitted and that those who registered up to this time be recognized as constituting the organization and that those who registered later be recognized as members of the organization.

Mrs. Dee McCraw made motion that the program as in the hands of the delegates with whatever changes may be necessary be adopted as order of business for the day.

Hymn—"Light of the World".

Very gracious words of welcome were given by Mrs. G. B. McSwain, President of the Pleasant Ridge Woman's Missionary Society and Mrs. John Scism, president of Patterson Grove Woman's Missionary Society gave the response.

At this time visitors recognized were Miss Mary Currin, Young Peoples Leader of the State, Miss Ruby Daniels, returned Missionary from Hungary, Mrs. Bandy and Mrs. Coon, South Fork Association and Mrs. W. R. Harbick of North Spartanburg Association of Inman, South Carolina.

The following pastors were recognized: Rev. J. L. Jenkins, Rev. J. W. Suttle, Rev. Gaither Hawkins, Rev. M. A. Kiser, Rev. Lawrence Roberts, Rev. C. C. Matheney, Rev. D. F. Putnam, Rev. W. A. Elam, Rev. W. P. Biggerstaff, and Rev. Jesse Blalock.

This was followed by Roll Call of churches, all reporting except seven.

The report of Treasurer, Mrs. Ransom Casstevens, showed receipts as follows:

Associational Expense Fund \$116.52; Woman's Missionary Union Loan Fund \$176.27; Note Paid \$50.00; Cash from Mrs. Propst \$53.17—Total amount \$395.96.

Disbursements as follows:

Mrs. Wacaster for Associational Expenses \$116.52; Check to Mr. James Lovelace for Loan Fund \$100.00; Amount on Hand available for use \$179.44; Notes on hand \$650.00 from Students Gardner-Webb College.

KINGS MOUNTAIN BAPTIST ASSOCIATION

Mrs. Roy Propst, Young Peoples Leader for the Association, reported that we now have fifty-eight active organizations.

Annual report of Mrs. John Wacaster came next, this was very inspiring.

The Stewardship Chairman, Mrs. J. R. Cline, reported that at this time the Association has ninety-four memberships in the One Hundred Thousand Club.

Mrs. J. R. Cantrell, chairman of Personal Service, made a very gratifying report concerning her work.

Hymn—"Oh! Zion Haste".

At this time, Miss Mary Currin, State Young Peoples Leader, was presented to the Association by Mrs. Wacaster. She brought a beautiful and inspiring message using four words, "Share, Suffer, Sow and Surrender" as great positive and comforting words showing we are to share ourselves, we must sow and God will care for the harvest. We must suffer in our own spirit with others and must surrender our all to Christ. Our Woman's Missionary Union and Young Peoples work are channels by which this can be done.

The following Committees were appointed:

Appreciation—Mrs. R. B. Costner, Mrs. J. L. Jenkins and Mrs. S. B. Wilson

Time and Place—Mrs. Joe E. Blanton, Mrs. B. Austell and Mrs. W. M. Martin

Nominating—All W. M. S. Presidents, Mrs. J. S. Ledford, Chmn.

Prayer by Rev. Lawrence Roberts.

Adjournment for lunch.

AFTERNOON SESSION

The afternoon session was opened by singing Hymn "Jesus Shall Reign".

Mrs. Lawton Blanton of Lattimore gave the devotional for the afternoon using for discussion the Thirty-seventh Psalm.

Prayer by Rev. J. W. Suttle.

The minutes were read and approved at this time.

Mission Study report by Mrs. Wade D. Bostick came next. During this year 134 classes have been held, enrolling 1304, showing a very gratifying gain over last year's work.

At this time Miss Ruby Daniels, returned Missionary from Budapest, Hungary, was presented to the Association. She told of the conditions in Hungary at the time she sailed and urged us not to become discouraged concerning mission work because of world conditions and sounded forth the notes that God will bring much good out of all this.

An offering was taken for Miss Daniels and Emergency Relief, which amounted to \$72.23.

KINGS MOUNTAIN BAPTIST ASSOCIATION

Hymn—"Send the Light".

A pageant "A Search for Happiness" was given by Woman's Missionary Society of Grover church. This was a beautiful demonstration of how to find happiness and showed us that only a crown of happiness will be ours if we give ourselves in service to Christ.

Reports of Committee's Appreciation—Mrs. R. B. Costner:

"We, the members of the Woman's Missionary Union of Kings Mountain Association, express our deep appreciation to the W. M. S. of Pleasant Ridge Church for the cordial welcome and the gracious hospitality we have received today. We enjoyed the bountiful lunch at the noon hour.

We thank Rev. Jesse Blalock, the pastor of Pleasant Ridge Church, and all other ministers that are present for their cooperation. We, also, wish to thank the men of the Pleasant Ridge Church who have shown an unusual interest in the success of the meeting today.

We express our gratitude to Mrs. John Wacaster for her challenging leadership for the past twenty-two years and her careful planning of the programs, which have been uplifting to us in all our missionary work.

We graciously recognize those who made our program so impressive today, namely: Miss Mary Currin, Leader of the Young Peoples Work in the State and Miss Ruby Daniels one of our consecrated missionaries from Hungary.

Thanks are, also due the Young People from Grover, who prepared and presented the pageant.

As we go from this Forty-eighth Session of the Woman's Missionary Union of the Kings Mountain Association, we rededicate our lives to God's service and increased Missionary work."

Time and Place—Mrs. Joe Blanton

The hostess church in 1943 will be Ross Grove Baptist Church, the time will be the third Thursday in August.

Nominating Committee—Mrs. J. S. Ledford:

Superintendent—Mrs. John Wacaster, Cherryville, N. C.

Vice-Superintendent—Mrs. W. P. Biggerstaff, Shelby, N. C.

Secretary—Mrs. L. H. Ledford, Shelby, N. C.

Treasurer—Mrs. Ransom Casstevens, Shelby, N. C.

Young People's Leader—Miss Ruby Chapman, Shelby, N. C.

Stewardship Chairman—Mrs. J. R. Cline, Shelby, N. C.

Personal Service Chairman—Mrs. J. R. Cantrell, Boiling Springs

Mission Study Chairman—Mrs. Wade D. Bostick, Shelby, N. C.

R. A. Counselor—Reverend L. L. Jessup, Shelby, N. C.

Closing hymn, "Blest Be The Tie That Binds", was followed with prayer by Reverend D. F. Putnam.

Respectfully submitted,

Mrs. John Wacaster, Supt.

Mrs. L. H. Ledford, Sec.

TABLE ONE—CHURCH MEMBERSHIP, ETC.

OFFICES	Village, Town, City or County?	When Constituted	PASTORS AND POST OFFICES	Days of Meeting	Members Reported Last Year	CHURCH MEMBERSHIP										Revival Meetings Held During Year	Supper During Year	Observances of Lord's	Families Receiving State Baptist Paper	
						GAINS			LOSSES											TOTAL
						Baptisms	Letters	Statements	Restorations	Letters	Exclusions	Erasures	Deaths	Total Present Members	Weekly Prayer Meetings					
Beaver Dam	C	1853	J. W. Suttle, Shelby	2-3	425	11	5	---	---	---	5	---	1	447	no	1	3	15		
Bethlehem	C	1842	W. G. Camp, Moorsboro	2-4	508	9	5	---	---	---	13	---	1	508	*	1	4	28		
Boiling Springs	V	1847	J. L. Jenkins, Boiling Springs	All	610	26	21	16	2	---	21	---	1	653	yes	1	1	---		
Buffalo	V	1902	M. L. Cook, Statesville	2-4	171	---	6	---	---	---	---	---	---	177	no	1	1	---		
Carpenters Grove	C	---	Ralph Carpenter, Belwood	---	164	---	---	---	---	---	5	---	3	156	---	---	---	---		
Casar	C	1894	Lawrence Roberts, Shelby	2-3	128	4	4	---	---	---	16	---	2	124	---	1	1	5		
David	C	1938	D. F. Putnam, Shelby	All	143	2	15	---	---	---	12	---	1	147	no	1	2	7		
Double Shoals	C	1898	J. W. Suttle, Shelby	4	203	4	3	---	---	---	2	---	---	208	---	1	1	---		
Double Springs	C	1844	J. W. Suttle, Shelby	1-2	420	15	7	---	---	---	17	---	5	417	---	1	4	---		
Elizabeth	C	1883	W. A. Roberts, Shelby	1-2-4	465	23	24	---	---	---	36	---	1	472	---	2	21	---		
Fallston	V	1902	Lawrence Roberts, Shelby	2-3	202	10	4	---	---	---	12	---	1	203	---	1	4	9		
Flint Hill	C	1909	J. W. Costner, Lawndale	1-3	239	8	6	1	---	---	14	---	8	231	yes	1	2	14		
Grover	V	1880	W. A. Hoffman, Grover	2-4	421	19	4	---	---	---	18	---	1	425	yes	1	4	4		
Kings Mountain, First	T	1911	A. G. Sargeant, Kings Mtn.	All	555	13	44	---	1	---	14	---	3	595	---	---	---	---		
Kings Mountain, Second	T	1915	E. F. Austin, Kings Mtn.	All	403	10	6	1	4	---	24	---	5	395	yes	1	4	10		
Kings Mountain, Macedonia	T	---	C. B. Bobbitt, Kings Mtn.	All	252	18	2	---	---	---	27	---	9	234	yes	1	4	6		
Lawndale	V	1891	C. Crow, Latimore	1-2-4	296	8	18	---	---	---	19	---	1	298	---	1	4	---		
Love Valley	C	1899	J. W. Suttle, Shelby	4	143	10	---	---	---	---	---	---	4	153	yes	1	10	---		
Mt. Sinai	C	1940	L. B. Turner, Kings Mtn.	All	24	4	---	2	---	---	---	---	30	---	---	---	---	---		
Mulls Chapel	C	1851	L. M. Canipe, Boiling Springs	1-3	169	5	19	---	---	---	9	---	184	---	---	1	4	9		
New Bethel	C	1923	E. L. McDaniel, Moorsboro	2-4	170	11	1	---	---	---	2	---	---	180	yes	1	1	---		
New Hope	V	1848	J. W. Suttle, Shelby	4	196	4	3	---	---	---	2	---	1	200	no	1	3	---		
New Prospect	C	1873	C. C. Crow, Latimore	1-3	323	15	9	---	---	---	16	---	4	327	yes	1	1	15		
Normans Grove	C	1854	A. M. Kiser, Waco	1-3	213	3	2	---	---	---	2	---	1	213	---	1	2	2		
North Brook	C	---	John A. Hallman, Earl	2	153	1	5	---	---	---	2	---	---	157	---	1	1	---		
Oak Grove	C	1913	Otis Mull, Vale R-3	1-3	147	16	1	---	---	---	---	---	1	163	yes	1	1	---		
Oak View	C	1897	W. Luther Hawkins, Gastonia	All	338	28	10	---	---	---	6	---	1	369	yes	2	2	5		
Polkville	V	1938	E. O. Gore, Kings Mtn., R-2	All	103	23	6	3	---	---	4	---	1	130	yes	2	2	---		
	V	1940	D. F. Putman, Shelby	2-4	70	35	33	3	---	---	---	---	---	140	---	1	---	---		

1884	C	Patterson Grove	J. W. Suttle, Shelby	1-3	235	6	---	---	---	4	---	1	---	237	---	1	---	5	
1895	C	Patterson Springs	Jesse Blalock, Shelby, R-4	2-4	252	13	1	---	---	6	---	---	---	259	yes	1	---	4	
1878	C	Pleasant Grove	A. M. Kiser, Waco	2-4	261	11	4	---	---	8	---	---	---	262	---	1	---	2	
1851	C	Pleasant Hill	W. W. Davidson, B. Sprgs	1-3	297	4	5	---	---	8	---	---	---	297	---	1	---	1	
1915	C	Pleasant Ridge	Jesse Blalock, Shelby, R-4	1-2	276	5	---	---	---	8	---	---	---	277	yes	1	---	3	
1898	C	Poplar Springs	J. R. Cantrell, B. Sprgs.	2-4	355	9	5	---	---	1	---	---	---	377	no	1	---	7	
1881	C	Ross Grove	Lawrence Roberts, Shelby	1-3	221	18	2	1	---	15	---	3	---	223	---	1	---	1	
1845	C	Sandy Plains	Lawrence Roberts, Shelby	2-4	356	4	1	---	---	21	---	---	---	337	yes	1	---	11	
---	T	Shelby, First	Zeno Wall, Shelby	All	2111	64	56	3	---	73	---	14	---	233	yes	1	---	19	
1908	T	Shelby, Second	L. L. Jessup, Shelby Box 53	All	576	7	19	---	---	23	---	65	---	508	yes	1	---	10	
1940	T	Shelby, Bethel	C. C. Matheny, Shelby	All	235	3	21	---	---	14	---	1	---	244	yes	1	---	35	
1935	T	Shelby, Calvary	H. E. Waldron, Shelby	All	267	5	8	---	---	4	---	---	---	275	yes	1	---	1	
1924	T	Shelby, Dover	W. A. Elam, Shelby	All	533	11	7	---	---	31	---	3	---	516	yes	2	---	4	
1922	T	Shelby, Eastside	W. P. Biggerstaff, Shelby	All	469	8	39	1	---	11	---	---	---	505	yes	2	---	7	
1885	C	Union	A. M. Kiser, Waco	2-4	227	5	5	1	---	20	---	8	---	209	---	1	---	2	
1842	V	Waco	A. M. Kiser, Waco	1-2	209	8	4	---	---	3	---	---	---	216	---	1	---	12	
1928	C	Wallace Grove	Floyd Holler, Kings Mtn.	1-2	122	6	4	---	---	6	---	---	---	126	no	1	---	3	
1816	C	Zion	J. L. Jenkins, B. Sprgs.	1-3	373	5	2	---	---	4	---	---	---	375	---	1	---	4	
1838	C	Zoar	Jesse Blalock, Shelby	2-4	182	10	12	---	---	5	---	---	---	196	2	2	---	7	
				*15312 529 478 32								7 555 10 110				8615602			
																60 116 323			

*CLERK'S NOTE—These figures do not correspond with those sent by churches last year.

J. W. SUTTLE, Moderator

J. W. COSTNER, Clerk.

TABLE TWO—SUNDAY SCHOOLS

CHURCHES		ASSOCIATIONAL SUPT. N. L. WHISNANT														
		SUPERINTENDENTS AND POST OFFICES														
		Cradle Roll Under 3 Years	Beginners 3-5 Years	Primaries 6-8 Years	Juniors 9-12 Years	Intermediates 13-16 Years	Young People 17-24 Years	Adults 25 Years and Up	Department Extension	General and Department Officers	Including All Officers, Teachers and Pupils	What Is Your Average Attendance?	Baptisms from Sunday School	Is the School Graded?	Is It Standard	Teachers Holding Diplomas
Beaver Dam	E. D. Humphries, Shelby, R-4	20	18	35	27	43	50	155	--	7	255	170	11	*		
Benihem	John Randall, Kings Mountain	12	23	35	37	41	102	38	41	30	328	216	9	*		13
Bolling Springs	J. D. Huggins, Bolling Springs	19	20	30	30	31	92	120	54	12	438	199	22	*		
Buffalo	P. M. Hord, Shelby, R-1		9	10	17	11	10	9			66	40				
Carpenter's Grove	S. T. Carpenter, Belwood		13	7	12	11	16	36		2	97	70				5
Casar	O. T. Carpenter, Casar	5	6	6	14	12	20	26	6	4	99	56	3	*		8
David	A. M. Jolly, Kings Mountain, Walker St.		14	12	17	24	14	30		7	118	71	2	*		1
Double Shoals	A. C. Spangler, Shelby, Box 61	8	5	8	13	19	18	28	18	21	136	71				
Double Springs	Fred E. Green, Shelby, R-4	15	17	37	46	38	40	95	35	6	329	190	15	*		8
Elizabeth	John R. Mauney, Shelby	17	22	40	59	63	58	153	11	18	441	223	20	*		8
Fallston	E. A. Hoyle, Fallston	9	7	7	24	59	39	10	7	186	95	10				7
Flint Hill	Carl Weaver, Shelby, R-2	11	14		16	19	30	29		119	72					8
Grover	T. S. Keeter, Grover	30	20	35	55	40	80	86	50	5	401	155				7
Kings Mountain, First	W. F. McGill, Kings Mountain	13	15	37	65	68	32	177		5	412	253	13	*		8
Kings Mountain, Second	J. C. Gladden, Kings Mountain, R-1	8	21	55	65	62	48	93		7	359	180				7
Kings Mountain, Macedonia	W. D. Byars, Kings Mountain	26	11	11	41	22	34	73		13	231	132				4
Kings Mountain, Macedonia	Paris Weathers, Lattimore		16	13	21	30	20	62		5	167	93	7			
Kings Mountain, Macedonia	J. W. Towery	Union S.														
Kings Mountain, Macedonia	No Sunday School															
Kings Mountain, Macedonia	C. S. Bridges, Shelby, R-2	10	12		25	36					123	75	5			
Kings Mountain, Macedonia	Woodrow McEntire, Shelby, R-5	15	12		27	25	15	21		7	122	51	11	*		
Kings Mountain, Macedonia	J. D. S. Carpenter, Lawndale	18	8	4	21	30	51	39	4		175	123	3	*		9
Kings Mountain, Macedonia	J. A. Hallman, Earl	4	15	16	39	33	47	70	9	5	238		16	*		2
Kings Mountain, Macedonia	E. G. Clark, Shelby, R-1		7	4	12	14	4			2	101	50	3			
Kings Mountain, Macedonia	W. T. Warlick, Lawndale, R-2	11	4	23	30					2	105	71				
Kings Mountain, Macedonia	A. F. Houser, Vale, R-2	16	17	20	12					4	149	129	29			
Kings Mountain, Macedonia	W. C. Ranton, Kings Mountain, R-3	15	15	22	18	12	35	18		136	110	23				
Kings Mountain, Macedonia	O. E. Jolly, Kings Mountain	24	10	14	12	12	42	34		17	137	70	1			5

Polkville	A. Y. Warlick, Lawndale, R-1	11	9	10	22	21	53	2	149	104	39	*
Patterson Grove	L. B. Seism, Kings Mountain	12	11	17	27	23	53	7	219	107	6	3
Patterson Springs	Edwin Camp, Grover, R-1	13	13	14	18	18	55	25	193	90	13	*
Pleasant Grove	C. E. Elliott, Shelby, R-5	11	10	22	24	21	30	30	148	86	11	12
Pleasant Hill	Frank Cornwell, Shelby, R-2	12	9	9	21	19	24	48	131	80	4	*
Pleasant Ridge	H. R. Early, Lattimore, Star Route	12	9	9	21	19	24	67	177	90	6	9
Poplar Springs	J. D. Elliott, Shelby, R-3	12	19	10	28	37	68	52	227	135	9	*
Ross Grove	L. H. Ledford, Shelby	8	8	17	33	22	30	30	157	98	18	8
Sandy Plains	L. F. Jenkins, Shelby, R-4	8	11	25	28	31	26	77	223	100	4	*
Shelby, First	Horace Eason, Shelby	88	84	140	196	172	157	665	11	1668	742	58
Shelby, Second	Riviere Beam, Shelby, 412 Martin	60	35	64	85	64	57	101	7	523	241	7
Shelby, Bethel	R. W. McAbee, Shelby, Shannonhouse	27	20	26	51	26	37	57	4	248	170	3
Shelby, Calvary	Evans Green, Shelby	20	10	13	32	25	28	53	10	196	108	3
Shelby, Dover	Roy Newton, Shelby	23	49	66	84	62	82	118	6	480	242	11
Shelby, Eastside	E. R. Bahler, Shelby, 116 Palmer St.	12	25	55	95	56	71	49	7	370	167	8
Union	George M. Gold, Shelby, R-5	14	26	22	35	16	26	31	15	171	90	5
Waco	W. N. Pope, Waco	9	9	18	19	16	24	38	13	156	98	8
Wallace Grove	C. M. Owens, Shelby, R-5	8	4	20	28	46	25	47	4	222	105	5
Zion	J. F. Lutz, Shelby	21	14	15	24	29	31	40	4	174	52	10
Zoar	Lyman Humphries, Shelby, R-3	625	746	1032	1655	1496	1667	3276	415	2761	1312	5905
											429	153

Kings Mountain First Church reported Vacation Bible School Enrollment -----127
 Calvary Church reported Vacation Bible School Enrollment -----103
 Shelby, First Church has a Mission Sunday School Enrollment -----125

J. W. SUTTLE, Moderator

J. W. COSTNER, Clerk.

TABLE FIVE—CHURCH PROPERTY

CHURCHES	CHURCH CLERKS AND POST OFFICES	Does Your Church Own Its House of Worship?	When Was It Built?	Materials Used	Persons Seated	Number of Rooms	Department Assembly	Number Separate Rooms	Value of Church House and Grounds	Value of Mission Chapel If Any	Value of Pastor's Home	Total Value All Church Property	Indebtedness on All Church Property	Insurance Carried
Beaver Dam	E. D. Humphries, Shelby, R-4	Yes 1925	Brick	500	13	5		13	\$ 20000.00			\$ 20000.00		\$ 5000.00
Bethlehem	J. C. Randall, Kings Mountain	Yes 1929	Brick	750	13	3	17	18000.00				18000.00		10000.00
Boiling Springs	A. I. Jolley, Boiling Springs	Yes 1920	Brick	1000	18	5	16	65000.00			3000.00	68000.00		38000.00
Buffalo	C. L. Ballard, Shelby, R-1	Yes 1902	Wood	500				1500.00				1500.00		
Carpenters Grove	S. T. Carpenter, Belwood, R-1	Yes 1933	B, W	600	11			8000.00				8000.00		2500.00
Casar	H. E. Peeler, Lawndale, R-1	Yes 1934	Brick	500	13	1	12	5000.00				5000.00		1700.00
David	T. J. Falls, Kings Mountain	Yes 1938	Brick	300	9		9	6500.00				6500.00		2000.00
Double Shoals	Mrs. A. P. Spangler, Shelby, R-5	Yes 1924	Brick	380		1	12	9000.00				9000.00		2000.00
Double Springs	J. S. Gillespie, Shelby, R-4	Yes 1920	Brick	500	19	6	13	15000.00				15000.00		10000.00
Elizabeth	Chas. W. Spake, Shelby	Yes 1939	Brick	500	33	5	33	30000.00				30000.00	9000.00	9000.00
Fallston	J. C. Royster, Shelby, R-5	Yes 1940	Brick	400	24	5	17	20420.00				20420.00		12500.00
Faint Hill	J. R. Ledbetter, Shelby, R-2	Yes 1940	Brick	400	10	9		7000.00				7000.00		
Grover	Carley Martin, Grover	Yes 1907	Brick	400		14		7000.00			3000.00	10000.00		5500.00
Kings Mountain, First	Mrs. J. E. Tate, Jr., Kings Mtn.	Yes 1911	Brick	350	27	7	20	61200.00			6000.00	67200.00	2295.00	23500.00
Kings Mountain, Second	Samuel McAfee, Kings Mtn.	Yes 1922	Brick	450	17	2	15	10000.00			3500.00	13500.00	3780.00	3000.00
Kings Mountain, Macedonia	Mrs. Otto Kiser, Sr., Kings Mtn.	Yes 1932	Wood	300	12	3	9	5000.00			2000.00	7000.00		350.00
Lattimore	Chas. B. Hamrick, Lattimore	Yes 1915	Wood	500	4			4500.00				4500.00		3000.00
Lawndale	C. D. Forney, Sr., Lawndale	No	Use Mill Chapel											
Love Valley	Mrs. Maggie Mullinax, Kings Creek, R-1	No	Building											
Mt. Sinai	Mrs. Maggie Mullinax, Kings Creek, R-1	Yes 1928	Brick	400	7	7		5000.00				5500.00		
Mulls Chapel	Nelson T. Queen, Shelby, R-5	Yes 1929	Wood	500	3		8	3000.00				3000.00		1000.00
New Bethel	Frank Spurling, Lawndale, R-2	Yes 1925	Brick	300	12	12	15	9500.00				15500.00		8500.00
New Hope	W. D. Earl	Yes 1873	Wood	800	9	8		9500.00				9500.00		6500.00
New Prospect	E. G. Clark, Shelby, R-1	Yes 1892	Brick	500	1			5436.00				5436.00		
Normans Grove	Lloyd Boggs, Lawndale, R-2	Yes 1941	Brick											
North Brook	Z. Z. Warlick, Cherryville, R-1	Yes 1913	Wood	500				1500.00				1500.00		1500.00
Oak Grove	Mrs. Sam Lovelace, Kings Mtn., R-2	Yes 1924	Wood	500	3	2	2	5200.00				5200.00		2000.00
Oak View	Mrs. J. E. Bumgardner, Kings Mtn. R-1	Yes 1939	Cem.	250	8	7	6					3000.00		800.00
Polkville	Griffin Davis, Shelby, R-4	Yes 1941	Brick	Not complete										
Patterson Grove	Miss Marjorie Seism, Kings Mtn.	Yes 1922	Brick	350	11	3	10	7000.00				7000.00		2500.00

Patterson Springs	Mrs. Mdzelle McSwain, Shelby, R-2	Yes 1923 Brick	250	11	2	9	10000.00	10000.00	2000.00
Pleasant Grove	V. A. Gardner, Shelby, R-5	Yes 1936 Brick	250	14	12	10000.00	10000.00	5000.00	
Pleasant Hill	J. C. Lowery, Shelby, R-2	Yes 1928 Brick	300	11	10	10000.00	10000.00	1200.00	
Pleasant Ridge	G. L. Hamrick, Lettimore	Yes 1915 Wood	500	8	22	2000.00	2000.00	2500.00	
Poplar Springs	A. T. Hamrick, Shelby, R-3	Yes 1923 Brick	600	24	2	17000.00	17000.00	5000.00	
Ross Grove	Nestor G. Hamrick, Shelby	Yes 1906 Wood	400	11	10	7000.00	7000.00	3500.00	
Sandy Plains	H. H. Grayson, Shelby, R-4	Yes 1938 Brick	500	16	6	10000.00	10000.00	6000.00	
Shelby, First	Horace Eason, Shelby	Yes 1923 Brick	1500	106	9	97	22500.00	10250.00	
Shelby, Second	Mrs. W. H. Champion, Shelby	Yes 1909 Brick	650	57	6	51	27000.00	3000.00	
Shelby, Bethel	Miss Pauline Green, Shelby	Yes 1940 Wood	250	10	2	9	3500.00	3000.00	
Shelby, Calvary	Sylvanus Gardner, 316 Clegg, Shelby	Yes 1936 Wood	600	9	8	8	8000.00	6000.00	
Shelby, Dover	W. C. Cartee, Shelby, R-4	Yes 1925 Brick	400	25	5	22	20000.00	20000.00	
Shelby, Eastside	E. R. Beheler, Shelby, 116 Palmer	Yes 1923 Brick	350	35	7	28	20000.00	7000.00	
Union	Elmer Withrow, Shelby, R-5	Yes 1913 Wood	600	6	3	9	7000.00	1500.00	
Waco	S. L. Dellinger, Shelby, R-1	Yes 1940 Brick	325	17	4	16	15000.00	8000.00	
Wallace Grove	Odus Walker, Lawndale, R-3	Yes 1928 Wood	400	1	15	14	2000.00	2000.00	
Zion	G. T. Cabaniss, Shelby, R-5	Yes 1927 Brick	500	14	15	14	23000.00	23000.00	
Zoar	Mrs. Charles Warren, Shelby, R-3	Yes 1933 Brick	800	9	6	6	8000.00	10000.00	
			500	9	6		8000.00	1500.00	

J. W. SUTTLE, Moderator

J. W. COSTNER, Clerk.

TABLE SIX—GIFTS FOR LOCAL CHURCH WORK

CHURCHES	REGULAR TEACHERS AND POST OFFICES	Pastor's Salary Paid This Year	Other Salaries	Ministerial Help and Supply	Building and Repairs Spent This Year	Church Debt and Interest	Incidentals	Literature for Sunday School and B.Y.P.U. and W.M.S.	Help Given to Local Poor	For Printing the Minutes and Clerk of Association	Other Objects	Total for Local Purposes Given by Church	Number of Tithe
Beaver Dam	W. H. Humphries, Shelby, R-4	\$ 480.00		\$ 100.00		\$	\$ 319.55	\$ 138.66	\$ 52.00	\$ 8.94	\$ 87.51	\$ 1246.66	
Bethlehem	M. V. Logan, Kings Mountain	900.00		118.00	423.81		265.95	174.57		15.00	409.93	2307.26	6
Boiling Springs	J. L. Lovelace, Boiling Springs	1800.00	120.00	135.00	741.15		680.99	384.38	3.49	5.00	226.07	4066.08	
Buffalo	C. L. Ballard, Shelby, R-1	75.14	20.00				20.00	17.00		3.00		135.14	
Carpenters Grove	Mrs. S. A. Salm, Lawndale, R-3	403.63					85.46	79.44	12.50	5.00		773.53	
Casar	A. A. Richard, Casar	400.00	15.00	50.00	28.50		80.60	82.21	25.00	3.72	500.00	1203.36	4
David	L. A. Harmon, Kings Mtn., R-3	676.05		25.15	700.00		145.90	94.54		4.50		1046.14	15
Double Shoals	S. B. Eskridge, Kings Mtn., R-3	400.00		157.00			194.60	80.08		6.24	168.00	1005.92	1
Double Springs	R. Hawkins, Shelby, R-5	645.00		100.50	28.12	50.00	303.22	229.48		12.51	86.88	1455.72	
Elizabeth	E. B. Wilson, Shelby	1220.15		112.50	43.79	3281.75	360.91	331.09		14.16	13.04	5377.39	10
Fallston	G. S. Royster, Lawndale, R-2	450.00	49.25	95.00	66.90	4000.00	157.35	122.22		6.00	22.50	4969.22	
Funt Hill	L. N. Harrill, Shelby, R-2	240.00	38.16	80.00	4.50		60.00	53.00	36.39	7.00	45.00	564.05	50
Grover	B. F. Bird, Grover	900.00		67.91	415.30		224.38	175.59		8.00		1791.18	12
Kings Mountain, First	Mrs. J. E. Tate, Jr., Kings Mtn.	2385.00	1028.50		2638.12	658.79	730.65	408.12		10.00	398.23	7859.18	
Kings Mountain, Second	S. O. Kirby, Kings Mtn.	1865.60		191.90	610.78	457.60	346.75	275.48	63.00		92.02	4214.74	75
Kings Mountain, Macedonia	Mae Snead, Kings Mountain	1477.00			580.52	253.56	195.84	116.93			126.16	2715.87	26
Latimore	Margaret Latimore, Latimore	720.00		100.00	672.28		167.72	114.54		9.00	133.00	1909.70	3
Latimore	Mrs. F. L. Rollins, Lawndale	350.00		92.50			27.50	10.46		4.00		167.46	
Love Valley	Mary Vandye, Kings Mtn., R-2	60.00								2.00		62.00	7
Mt. Sinai	W. H. Putnam, Shelby, R-2	200.00		54.05	35.00		64.60	40.00	15.00	5.00	50.00	463.65	
Mulls Chapel	Pearl Turner, Shelby, R-5	206.00		35.00			22.60	46.76		4.00	108.48	422.84	
New Bethel	J. D. S. Carpenter, Lawndale	420.00		30.00			200.27	186.30		7.50	125.00	969.07	
New Hope	R. L. Nichols, Earl	442.50		100.00	35.34		130.51	177.98		10.00	82.60	978.93	5
New Prospect	Paul Hord, Shelby, R-5	300.00		101.00			50.47	50.00		3.00	7.50	513.97	
Normans Grove	W. M. Lovelace, Belwood, R-1	157.00		40.00	782.00			45.00		5.00		1027.00	
North Brook	T. G. Lackey, Cherryville, R-1	300.00		80.00			50.00	48.00		5.00		483.00	
Oak Grove	James S. Ware, Kings Mtn., R-3	449.97	50.41	72.83	98.19	565.01	91.18	47.66	9.26	10.00	84.05	1478.94	10
Oak View	T. L. Spearman, Clover, S. C., R-1	575.00		73.56	197.95	585.48	64.52	70.25	7.05		48.53	1622.34	20
Polkville	Fred Mintz, Lawndale, R-1	345.00		70.00	2000.00		61.64	75.90		4.50	62.60	2619.64	
Patterson Grove	Lloyd Phifer, Kings Mtn.	381.00		144.56	18.36		142.15	116.20	31.00	10.00	82.10	925.37	4

Patterson Springs	Mildred Camp, Shelby, R-2	383.40	115.00	49.24	326.50	178.52	95.52	7.77	132.04	1287.99
Pleasant Grove	Posie Hamrick, Lawndale, R-2	400.00	85.00	23.75	---	140.77	185.72	---	353.75	1188.99
Pleasant Hill	Joe Beam, Shelby, R-2	290.00	72.80	---	---	79.30	69.82	9.00	50.00	570.92
Pleasant Ridge	A. Yates Hamrick, Lattimore	630.00	87.65	---	---	113.89	103.06	5.25	7.73	967.37
Poplar Springs	Purvis Wesson, Shelby, R-2	66.00	67.37	---	---	241.62	115.16	6.50	658.13	1449.38
Ross Grove	L. H. Ledford, Shelby	360.00	85.00	---	---	154.12	147.25	4.00	28.84	835.18
Sandy Plains	T. O. Wiggins, Shelby, R-4	480.00	74.19	55.97	---	231.07	112.94	10.00	---	898.20
Shelby, First	J. L. Suttle, Shelby	5200.00	1266.56	1034.87	6244.50	877.58	1138.06	35.00	1443.95	23107.44
Shelby, Second	T. C. Bumgardner, Shelby, Box 659	2600.00	142.65	2534.48	1410.76	1475.40	386.66	15.24	254.00	8881.25
Shelby, Bethel	G. W. Harris, Shelby, 1007 Dodd	1560.00	117.00	3836.00	---	568.00	170.00	5.00	3.29	6260.29
Shelby, Calvary	Roy Panther, Shelby	1560.00	120.96	70.58	874.58	259.60	189.86	5.00	49.87	3130.45
Shelby, Dover	G. H. Dover, Shelby	2149.98	442.05	1455.74	515.00	611.26	283.81	12.00	200.60	5789.94
Shelby, Eastside	M. S. Crapps, Shelby, Millside	2260.00	283.00	6898.12	---	594.29	320.02	17.50	207.82	10618.47
Union	Clyde Blanton, Lawndale, R-1	306.63	71.23	2.05	---	49.16	67.78	7.52	17.00	528.99
Waco	U. A. Black, Waco	500.40	96.00	831.00	900.00	134.52	92.69	6.50	474.06	3035.17
Wallace Grove	Oodus Walker, Lawndale, R-3	75.50	---	---	---	---	---	4.00	---	79.50
Zion	G. P. Irvin, Shelby, R-5	690.00	150.00	2947.00	---	164.18	119.04	7.50	94.50	4187.97
Zoar	C. L. Allen, Shelby, R-3	346.66	65.71	493.05	---	92.52	82.24	5.50	---	1085.68
		\$39675.01	\$5618.55	\$30397.96	\$20123.53	\$1131.09	\$7531.43	\$377.41	\$6934.08	\$129327.93

J. W. SUTTLE, Moderator

J. W. COSTNER, Clerk.

TABLE SEVEN—GIFTS FOR MISSIONS, EDUCATION AND ALL BENEVOLENCES

CHURCHES	Total To Co-Operative Program	Special to Associational Missions	Special to State Missions	Special to Home Missions	Special to Foreign Missions	Special to Schools and Colleges	Special to Theological Seminaries	Special to Orphanage	Special to Hospitals	Special to Old Ministers' Relief	Hundred Thousand Club	Red Cross and Foreign Relief	Other Objects	Total Given for Mission and Benevolences	Grand Total for All Purposes Given by Church
Beaver Dam	\$ 150.00	\$ 12.00	\$ 21.90	\$ ---	\$ ---	\$ 252.00	\$ ---	\$ 94.58	\$ 14.30	\$ 19.20	\$ ---	\$ ---	\$ 35.50	\$ 599.48	\$ 1346.14
Bethlehem	231.01	---	20.80	14.46	28.65	274.19	---	148.39	28.61	---	10.00	---	93.51	849.62	3156.88
Belling Springs	5.00	---	80.00	75.00	80.00	4345.00	---	150.00	40.00	10.00	32.32	---	10.00	4827.32	8893.40
Buffalo	---	---	---	---	---	---	---	12.00	---	---	---	---	---	12.00	147.14
Carpenters Grove	117.13	---	78.21	76.23	58.51	146.65	---	266.65	44.25	34.15	6.00	---	167.61	995.38	1768.91
Casari	34.37	---	50.22	22.93	31.50	134.36	---	59.59	7.53	---	---	---	2.50	353.70	1557.06
David	40.00	---	---	---	14.47	15.00	---	2.50	5.30	26.00	12.00	---	15.00	107.00	1753.14
Double Shoals	64.00	5.00	86.12	14.00	14.47	480.00	---	104.49	24.75	14.40	29.00	110.00	---	926.23	1832.15
Double Springs	259.28	18.00	---	---	200.39	484.29	---	234.13	8.72	---	---	---	---	1184.81	2840.53
Elizabeth	---	135.12	---	---	---	281.75	---	99.14	---	---	---	45.13	---	561.14	5938.53
Fallston	120.47	14.00	12.75	22.60	46.00	240.41	---	142.11	20.41	---	30.00	---	77.50	726.25	5695.47
Flint Hill	40.00	3.00	---	6.00	3.00	57.50	---	23.00	20.84	---	12.00	---	6.50	171.84	735.89
Grover	356.94	---	212.47	16.26	23.03	211.43	---	153.03	19.46	---	39.74	---	42.70	1075.06	2866.24
Kings Mountain, First	300.0	---	64.37	116.82	186.37	399.30	---	551.00	17.40	---	140.00	---	419.04	377.95	10053.48
Kings Mountain, Second	---	---	37.01	---	---	154.34	---	50.00	116.60	---	25.00	---	---	75.00	4592.69
Kings Mountain, Macedonia	---	---	9.78	42.33	42.33	25.00	---	25.00	25.00	23.80	---	---	64.25	381.63	2790.87
Lattimore	440.00	---	---	15.35	---	95.01	---	83.65	15.48	---	---	---	17.50	877.85	2291.33
Laywade	5.00	---	---	---	---	240.00	---	165.00	---	---	---	---	---	5.00	1495.31
Love Valley	34.47	---	11.74	---	---	49.59	---	34.87	9.00	---	---	---	50.88	190.56	654.20
Mt. Sinai	---	5.42	3.50	---	---	4.75	14.01	24.00	8.30	---	---	---	16.00	75.98	498.82
Mulls Chapel	144.86	---	292.88	161.63	101.62	200.00	445.64	101.26	---	16.80	---	---	114.28	1579.91	2539.98
New Bethel	77.95	---	80.00	80.00	80.00	155.75	---	93.00	40.00	24.00	36.00	---	161.37	528.11	1807.04
New Hope	21.25	---	5.00	---	---	10.00	---	18.75	---	---	---	---	---	55.00	568.97
New Prospect	10.01	---	---	5.53	6.25	---	---	---	---	---	---	---	25.10	46.89	1073.89
Normans Grove	---	---	---	---	---	---	---	---	---	---	---	---	---	15.40	498.40
North Brook	---	---	---	---	7.11	70.02	---	13.47	1.93	---	---	---	---	15.40	498.40
Oak Grove	58.31	10.00	21.27	---	---	---	---	31.71	5.75	---	6.00	---	3.95	214.12	1692.66
Oak View	10.00	---	---	---	---	---	---	10.00	47.00	16.40	---	---	---	67.00	1689.34
Polkville	10.00	8.08	---	---	---	---	---	10.00	---	---	11.60	---	---	56.08	2675.72

Patterson Grove	148.56	48.06	16.50	28.00	288.00	115.88	22.06	16.32	31.00	56.00	768.38	1693.75
Patterson Springs	148.36	16.13	8.59	9.00	86.70	64.33	17.02	25.00	---	18.00	407.23	1695.22
Pleasant Grove	66.45	21.50	---	---	42.85	60.00	16.50	70.00	---	---	277.10	1466.09
Pleasant Hill	64.50	---	7.65	---	25.00	31.31	---	---	---	---	128.46	699.38
Pleasant Ridge	90.00	15.00	25.05	10.05	200.00	70.00	21.32	24.00	---	25.55	534.57	1501.94
Poplar Springs	30.00	---	---	---	77.37	31.09	7.45	---	---	---	145.91	1595.19
Ross Grove	58.50	35.56	25.41	44.08	780.00	123.77	29.70	---	84.00	33.00	1222.29	2087.47
Sandy Plains	145.49	31.60	5.54	21.30	257.54	56.28	8.63	---	9.00	---	541.38	1439.58
Shelby, First	3676.40	71.25	270.51	591.40	30253.75	700.00	100.00	---	424.00	400.00	36619.11	59726.55
Shelby, Second	508.74	10.00	13.70	29.38	554.16	137.58	---	---	48.00	---	1323.09	10204.34
Shelby, Bethel	25.39	3.00	4.00	5.00	---	5.00	8.41	---	4.00	---	54.80	6315.09
Shelby, Calvary	25.76	20.00	2.10	1.00	8.79	---	50.00	80.00	9.00	11.89	208.34	3338.79
Shelby, Dover	822.08	60.10	54.49	92.30	1085.20	247.16	66.16	---	39.00	259.65	2796.14	8585.98
Shelby, Eastside	358.00	38.44	18.47	70.11	380.18	133.00	10.80	---	36.00	---	1044.20	11662.67
Union	34.65	8.37	---	7.05	8.00	10.50	10.50	8.00	9.50	4.58	96.15	625.14
Waco	138.67	18.55	17.50	26.75	103.88	84.61	12.23	---	42.00	26.87	471.25	3506.42
Wallace Grove	7.50	---	---	---	---	---	---	---	---	---	79.50	87.00
Zion	150.00	12.00	29.75	29.75	1394.55	124.00	42.00	---	72.00	10.25	1864.50	6052.57
Zoar	154.94	4.77	---	9.00	28.53	22.75	11.67	6.76	12.00	42.55	3107.74	1396.42
	\$9252.24	\$315.12	\$1180.13	\$1883.40	\$4360.94	\$4711.22	\$950.27	\$419.83	\$1181.47	\$222.83	\$2234.90	\$19750.77

J. W. SUTTLE, Moderator

J. W. COSTNER, Clerk.

KINGS MOUNTAIN BAPTIST ASSOCIATION

HISTORICAL DATA

Date	Place of Meeting	Intro. Sermon	Moderator	Clerk
1851	Double Springs	D. Pannell	T. Dixon	J. R. Logan
1852	New Bethel	J. Suttle	T. Dixon	J. R. Logan
1853	Boiling Springs	G. W. Rollins	D. Pannell	J. R. Logan
1854	Mt. Sinai	D. Pannell	D. Pannell	J. R. Logan
1855	Zion	G. W. Rollins	D. Pannell	J. R. Logan
1856	New Prospect	T. Dixon	T. Dixon	J. R. Logan
1857	Big Springs	G. W. Rollins	G. W. Rollins	J. R. Logan
1858	Olivet	J. Suttle	G. W. Rollins	J. W. Green
1859	Pleasant Hill	G. W. Rollins	L. M. Berry	J. R. Logan
1860	High Shoals	L. M. Berry	L. M. Berry	J. R. Logan
1861	Lincolnton	R. P. Logan	L. M. Berry	J. R. Logan
1862	New Bethel	L. M. Berry	G. W. Rollins	J. R. Logan
1863	Sandy Run	G. W. Rollins	G. W. Rollins	J. R. Logan
1864	Bethel Ired. Co.	L. M. Berry	R. P. Logan	J. R. Logan
1865	Zoar	G. W. Rollins	R. P. Logan	J. R. Logan
1866	Concord	P. R. Elam	R. P. Logan	J. R. Logan
1867	Thessalonias	J. H. Yarboro	J. H. Yarboro	G. M. Webb
1868	Mt. Paran	G. M. Webb	J. H. Yarboro	G. M. Webb
1869	Double Springs	G. W. Rollins	G. W. Rollins	G. M. Webb
1870	High Shoals	R. P. Logan	G. W. Rollins	G. M. Webb
1871	Bethel Ired. Co.	G. M. Webb	T. Dixon	G. M. Webb
1872	Bethlehem	Wade Hill	T. Dixon	G. M. Webb
1873	Zion	G. W. Rollins	G. W. Rollins	B. H. Bridges
1874	Sandy Run	Wade Hill	G. W. Rollins	L. M. Logan
1875	New Hope	T. Dixon	T. Dixon	L. M. Logan
1876	Sandy Plains	G. W. Rollins	T. Dixon	L. M. Logan
1877	Pleasant Hill	J. H. Yarboro	G. W. Rollins	B. H. Bridges
1878	Boiling Springs	A. C. Irvin	T. Dixon	B. H. Bridges
1879	New Prospect	H. Hatcher	A. L. Stough	L. M. Logan
1880	Double Springs	P. R. Elam	T. Dixon	L. M. Logan
1881	Buffalo	W. A. Nelson	T. Dixon	L. M. Logan
1882	Bethel R. Co.	A. L. Stough	J. Y. Hamrick	L. M. Logan
1883	Pleasant Grove	G. P. Hamrick	J. Y. Hamrick	L. M. Logan
1884	Big Springs	A. C. Irvin	H. F. Schenck	L. M. Logan
1885	Grover	B. W. Busey	H. F. Schenck	D. S. Lovelace
1886	Beaver	G. M. Webb	H. F. Schenck	D. S. Lovelace
1887	New Bethel	J. D. Hufham	H. F. Schenck	D. S. Lovelace
1888	High Shoals	J. M. McHanaway	H. F. Schenck	D. S. Lovelace
1889	Elizabeth	G. P. Hamrick	H. F. Schenck	D. S. Lovelace
1890	Zion	J. A. Speight	H. F. Schenck	D. S. Lovelace
1891	Waco	F. C. Hickson	H. F. Schenck	D. S. Lovelace
1892	Gastonia	G. P. Hamrick	H. F. Schenck	D. S. Lovelace
1893	Boiling Springs	J. L. Sproles	H. F. Schenck	D. S. Lovelace
1894	Shelby	A. C. Irvin	H. F. Schenck	D. S. Lovelace
1895	Bethlehem	J. D. Hufham	H. F. Schenck	D. S. Lovelace
1896	Lattimore	G. P. Hamrick	H. F. Schenck	D. S. Lovelace
1897	New Hope	A. C. Irvin	E. Y. Webb	D. S. Lovelace
1898	Sandy Plains	T. Dixon	E. Y. Webb	D. S. Lovelace
1899	New Prospect	G. M. Webb	E. Y. Webb	D. S. Lovelace

KINGS MOUNTAIN BAPTIST ASSOCIATION

HISTORICAL DATA (Continued)

Date	Place of Meeting	Intro. Sermon	Moderator	Clerk
1900	Double Springs	R. L. Hamrick	E. Y. Webb	D. S. Lovelace
1901	Cherryville	T. Dixon	E. Y. Webb	D. S. Lovelace
1902	Pleasant Grove	R. N. Hawkins	H. F. Schenck	D. S. Lovelace
1903	Pleasant Hill	R. F. Treadway	A. C. Irvin	D. S. Lovelace
1904	Zoar	D. F. Putnam	A. C. Irvin	D. S. Lovelace
1905	Kings Mountain	J. S. Farmer	A. C. Irvin	D. S. Lovelace
1906	Beaver Dam	A. H. Sims	A. C. Irvin	D. S. Lovelace
1907	Bessemer City	M. E. Parish	A. C. Irvin	D. S. Lovelace
1908	New Bethel	D. G. Washburn	A. C. Irvin	D. S. Lovelace
1909	Boiling Springs	J. J. Beach	A. C. Irvin	D. S. Lovelace
1910	Grover	C. A. Jenkins	A. C. Irvin	D. S. Lovelace
1911	Elizabeth	J. M. Hamrick	A. C. Irvin	D. S. Lovelace
1912	Mt. Zion	Wade Bostic	A. C. Irvin	D. S. Lovelace
1913	Zion	L. W. Swope	J. W. Suttle	J. J. Lattimore
1914	Poplar Springs	J. R. Miller	J. W. Suttle	J. J. Lattimore
1915	New Hope	T. C. Holland	J. W. Suttle	J. J. Lattimore
1916	Waco	W. E. Lowe	J. W. Suttle	J. J. Lattimore
1917	Fallston	D. G. Washburn	J. W. Suttle	J. J. Lattimore
1918	Union	D. F. Putnam	J. W. Suttle	J. J. Lattimore
1919	Sandy Plains	W. R. Beach	J. W. Suttle	J. J. Lattimore
1920	Ross Grove	J. M. Kester	J. W. Suttle	J. J. Lattimore
1921	Bethlehem	W. G. Camp	J. W. Suttle	J. J. Lattimore
1922	Casar	W. A. Elam	J. W. Suttle	G. G. Page
1924	Lattimore	J. R. Green	J. W. Suttle	G. G. Page
1924	Double Springs	R. L. Lemons	J. W. Suttle	G. G. Page
1925	Shelby 1st.	Rush Padgett	J. W. Suttle	G. G. Page
1926	Kings Mtn. 1st	G. P. Abernethy	J. W. Suttle	G. G. Page
1927	Double Shoals	Zeno Wall	J. W. Suttle	G. G. Page
1928	Beaver Dam	T. L. Jenkins	J. W. Suttle	G. G. Page
1928	Boiling Springs	C. J. Black	J. W. Suttle	G. G. Page
1930	Patterson Springs	Wallace Hartsell	J. W. Suttle	J. V. DeVenny
1931	Zion	L. L. Jessup	J. W. Suttle	J. V. DeVenny
1932	New Bethel	D. F. Putnam	J. W. Suttle	J. V. DeVenny
1933	Patterson Grove	T. L. Justice	J. W. Suttle	J. V. DeVenny
1934	New Prospect	Zeno Wall	J. W. Suttle	J. V. DeVenny
1935	Poplar Springs	A. G. Sargeant	J. W. Suttle	J. V. DeVenny
1936	Pleasant Grove	W. G. Camp	J. W. Suttle	J. V. DeVenny
1937	Bethlehem	C. V. Martin	J. W. Suttle	J. V. DeVenny
1938	Sandy Plains	J. L. Jenkins	J. W. Suttle	J. W. Costner
1939	Pleasant Hill	W. A. Hoffman	J. W. Suttle	J. W. Costner
1940	Carpenter's Grove	W. A. Elam	J. W. Suttle	J. W. Costner
1941	Elizabeth	A. M. Kiser	J. W. Suttle	J. W. Costner
1942	New Hope	W. P. Biggerstaff	J. W. Suttle	J. W. Costner

Treasurer—1851-1875—None; 1877—B. H. Bridges; 1878-1883—None; 1884-1897—T. D. Lattimore; 1898-1899—J. F. Williams; 1900-1903—T. K. Barnett; 1905-1913—H. D. Wilson; 1914-1933—Geo. Blanton; 1933—Offices of Clerk and Treasurer were consolidated.

