

10-20-1949

1949 Minutes of the Kings Mountain Baptist Association

Kings Mountain Baptist Association

Follow this and additional works at: <https://digitalcommons.gardner-webb.edu/kmba-minutes>



Part of the [Christian Denominations and Sects Commons](#), [Christianity Commons](#), and the [History Commons](#)

Recommended Citation

Kings Mountain Baptist Association Collection, Minutes of the Kings Mountain Baptist Association, 1949. Series 1, Box 5, University Archives, Gardner-Webb University, Boiling Springs, NC.

This Book is brought to you for free and open access by the Kings Mountain Baptist Association at Digital Commons @ Gardner-Webb University. It has been accepted for inclusion in Series 1: Kings Mountain Baptist Association Minute Books by an authorized administrator of Digital Commons @ Gardner-Webb University. For more information, please contact digitalcommons@gardner-webb.edu.

KINGS MOUNTAIN BAPTIST ASSOCIATION

CLEVELAND COUNTY, NORTH CAROLINA
Ninety-Ninth Annual Session

HELD WITH

Beaver Dam Baptist Church—October 20

Shelby Calvary Baptist Church—

Night Session

Shelby Dover Baptist Church—October 21

1949

THE NEXT SESSION WILL BE HELD

OCTOBER 19 AND 20, 1950

The First Day With The Double Springs Baptist Church

The Night Session With The Grover First Baptist Church

The Second Day With The Double Shoals Baptist Church

The Woman's Missionary Union Annual Meeting Will Be
Held With The Zion Baptist Church Next April



KINGS MOUNTAIN BAPTIST ASSOCIATION

CLEVELAND COUNTY, NORTH CAROLINA
Ninety-Nineth Annual Session

HELD WITH

Beaver Dam Baptist Church—October 20

Shelby Calvary Baptist Church—

Night Session

Shelby Dover Baptist Church—October 21

1949

THE NEXT SESSION WILL BE HELD

OCTOBER 19 AND 20, 1950

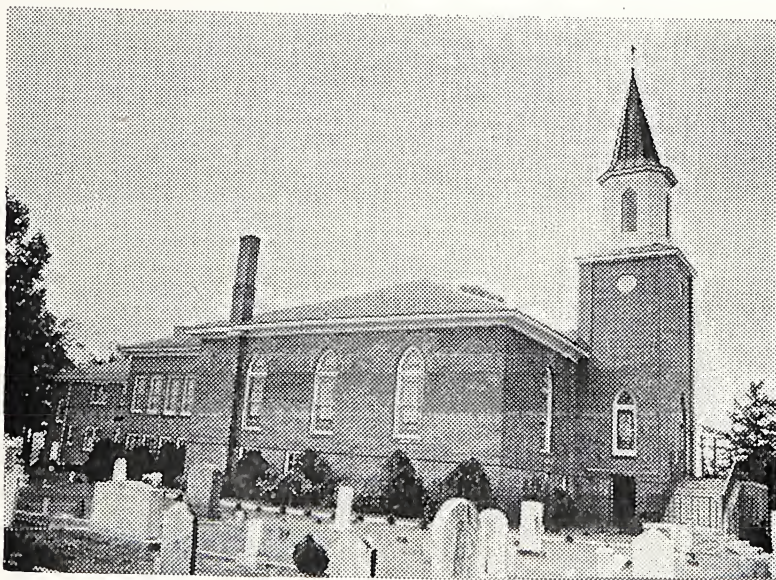
The First Day With The Double Springs Baptist Church
The Night Session With The Grover First Baptist Church
The Second Day With The Double Shoals Baptist Church
The Woman's Missionary Union Annual Meeting Will Be
Held With The Zion Baptist Church Next April

—PREACHERS—

Missionary—Rev. C. O. Greene

Doctrinal—Rev. Lawrence Roberts

Inspirational—G. C. Teague



BEAVER DAM BAPTIST CHURCH

The Beaver Dam Baptist Church was Constituted in 1850.

This Church has entertained the following years: 1949, 1928, 1906 and 1886.

Rev. J. W. Suttle, Pastor.

Mr. E. D. Humphries, Clerk.

Mr. W. H. Humphries, Treasurer.

Mr. E. D. Humphries, Sunday School Superintendent.

Mr. Palmer McSwain, Baptist Training Union Director.

Mrs. Eugene Hamrick, President of the Woman's Missionary Society.

Mr. Robert Morgan, Brotherhood President.

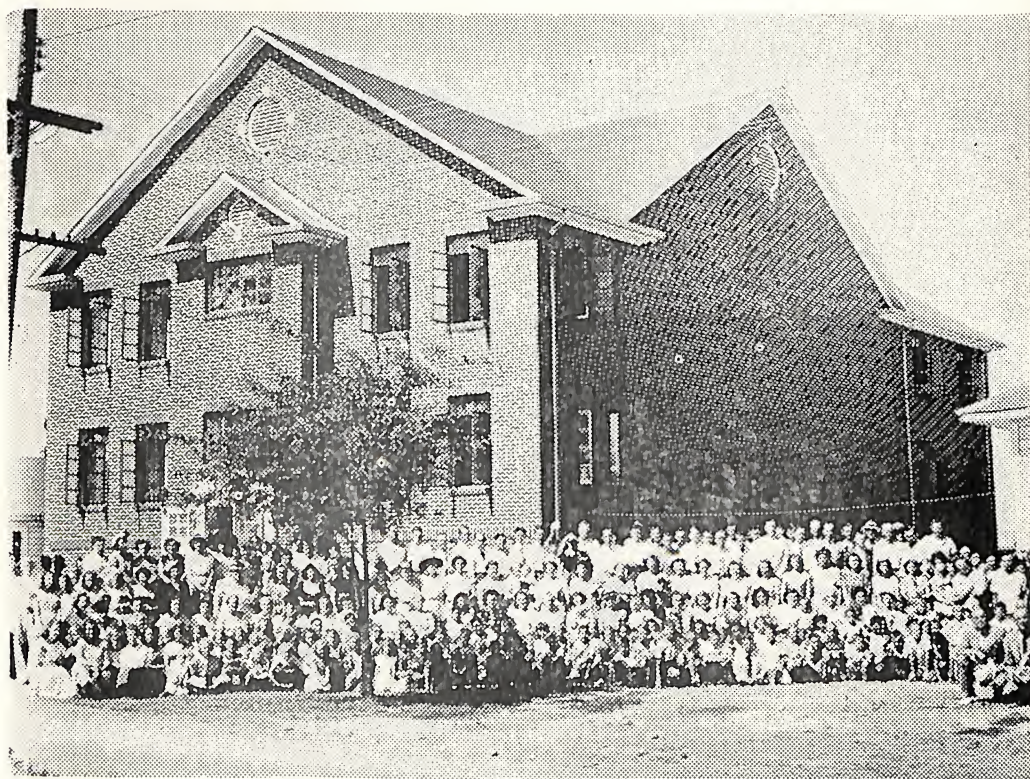
(This page, and the page of Pastor Suttle, was paid for by the Beaver Dam Church.)



REV. J. W. SUTTLE

J. W. Suttle is pastor of the Beaver Dam and Double Springs Baptist Churches. Pastor Suttle along with the good people of Deaver Dam Church entertained the Kings Mountain Baptist Association the first day, October 20, 1949. Beaver Dam Church was the boyhood Church of Pastor Suttle. He was baptized into the Fellowship of this Church.

He has served the Kings Mountain Baptist Association in the capacity of Moderator for thirty-seven consecutive years. He was elected in 1912 for the first time. He was elected again this year, for the thirty-eighth time, to serve for another year.



SHELBY CALVARY BAPTIST CHURCH

The Shelby Calvary Baptist Church was constituted in 1935.

The Night Session was held with this Church.

Rev. W. T. Furr, Pastor.

Mrs. J. A. Bridges, Clerk.

Mr. Roy Panther, Treasurer.

Mr. Grady McCurry, Sunday School Superintendent.

Mr. J. Ben Hendrick, Baptist Training Union Director.

Mrs. W. L. McWhirter, President of Woman's Missionary Society.

(This page, and the page of Pastor Furr, was paid for by the Shelby Calvary Baptist Church.)



REV. W. T. FURR

W. T. Furr along with the members of the Shelby Calvary Baptist Church entertained the night session of the Kings Mountain Association. Pastor Furr has been with the Calvary Church for one year. During this year he has led his people to erect a beautiful Educational Departmental Sunday School Plant.



SHELBY DOVER BAPTIST CHURCH

The Shelby Dover Baptist Church was constituted in 1925.

The Night Session of the Association in 1948 was held with this Church.

The Second Day Session of 1949 Association met at the Dover Church.

Rev. Ernest M. Smith, Pastor.

Miss Mable Myers, Educational Director.

Rev. R. F. Lancaster, Clerk.

Mr. George H. Dover, Treasurer.

Mr. Osborne Lee, Sunday School Superintendent.

Miss Mable Myers, Baptist Training Union Director.

Mrs. W. D. Johnson, Woman's Missionary Society President.

Rev. R. F. Lancaster, Brotherhood President.

(This page, and the page of Pastor Smith, was paid for by the Shelby Dover Baptist Church.)



REV. ERNEST M. SMITH

Pastor Ernest M. Smith and the fine people of the Shelby Dover Baptist Church were host to the Kings Mountain Baptist Association for the Second Day, October 21, 1948. They received the Messengers and visitors of the Association with a royal welcome and made it an enjoyable and profitable day for all concerned.

INDEX

ASSOCIATIONAL DIRECTORY	9-11
CHURCH DIRECTORY	70-75
MEMBERS OF THE GENERAL BOARD	12-16
CHURCHES & MESSENGERS	17-20
CONSTITUTION	21-23
CONFESSION OF FAITH	26
HISTORICAL DATA	76-77
MINISTERS ORDAINED DURING YEAR	71
MINISTERS NOT PASTORS IN ASSOCIATION	71
PROCEEDINGS — ASSOCIATIONAL	28-27
RULE OF ORDER	25
STUDENTS FOR THE MINISTRY	72
REPORTS:	
AMERICAN BIBLE SOCIETY	57-58
ASSOCIATIONAL MISSIONARY	36-38
BAPTIST TRAINING UNION	52
BEAUTIFICATION DIRECTOR	61-63
CHRISTIAN EDUCATION	28-29
COOPERATIVE PROGRAM	46-47
CHRISTIAN LITERATURE	49-50
DIGEST OF CHURCH LETTERS	38
GENERAL BOARD	39-42
HOSPITAL	56-57
KINGS MOUNTAIN BAPTIST SUNDAY SCHOOL	47-49
LAYMEN'S COMMITTEE	53
NOMINATING COMMITTEE	54
ORPHANAGE	54-55
PUBLIC MORALS	50-51
RELIEF & ANNUITY	58-59
SPECIAL COMMITTEE	39
TREASURER'S	42-45
WOMEN'S MISSIONARY UNION	30-31
WORLD RELIEF	60-61
RESOLUTIONS OF APPRECIATION	68
IN MEMORIAM	64-66

ASSOCIATIONAL DIRECTORY

OFFICERS OF THE ASSOCIATION

Moderator—J. W. Suttle ----- 708 W. Marion St., Shelby, N. C.
 Vice-Moderator—W. P. Biggerstaff ----- Rt. 5, Shelby, N. C.
 Clerk-Treasurer—Lawrence Roberts ---- Rt. 5, Ross Grove, Shelby, N. C.
 Historian—C. C. Padgett ----- Lattimore, N. C.
 Chorister—L. C. Pinnix ----- 120 Gaston St., Kings Mountain, N. C.
 Pianist—Mrs. L. C. Pinnix ---- 120 Gaston St., Kings Mountain, N. C.
 Associational Missionary—Lewis E. Ludlum ----- Box 534, Shelby, N. C.
 Beautification Director—Luther McSwain -- Rt. 2, Kings Mountain, N. C.
 Visual Aid Director—L. A. Waters ----- 216 Maple St., Shelby, N. C.
 Biblical Recorder Rep.—Bynum E. Weathers -- 305 S. DeKalb, Shelby
 Orphanage Rep.—Jack Hullender, 209 Fulton St., Kings Mountain, N. C.
 Hospital Rep.—J. R. Dover ----- Dover Mill, Shelby, N. C.

ASSOCIATIONAL MISSION COUNCIL

W. W. Harris, Chairman ----- 914 S. LaFayette St., Shelby, N. C.

FINANCE:

W. W. Harris, Chairman ----- Shelby, N. C.
 D. Boyd Cannon ----- Rt. 3, Shelby, N. C.
 O. Z. Morgan ----- 1102 N. Washington St., Shelby, N. C.
 A. W. Kincaid ----- Church St., Kings Mountain, N. C.

INSTITUTIONAL AND INTERRACIAL:

C. C. Crow, Chairman ----- Box 266, Shelby, N. C.
 Smoot Baker ----- Grover, N. C.
 Mrs. Allen Herndon ----- Clover, S. C.

ACTIVITIES:

Lawrence Roberts, Chairman ----- Rt. 5, Shelby, N. C.
 T. W. Fogleman ----- 108 Fulton St., Kings Mountain, N. C.
 C. O. Green ----- Lawndale, N. C.
 W. L. McSwain ----- Rt. 2, Kings Mountain, N. C.
 W. T. Furr ----- 609 Gardner St., Shelby, N. C.
 Mal Spangell, Jr. ----- 502 N. LaFayette St., Shelby, N. C.
 Sam T. McAbee ----- Box 722, Kings Mountain, N. C.
 Mrs. L. P. Williams ----- 505 Beaumont, Shelby, N. C.

BUILDING COMMITTEE FOR HOME FOR ASSOCIATIONAL MISSIONARY

E. B. Hicks, Chairman ----- 1012 Buffalo St., Shelby, N. C.
 Mrs. L. C. Pinnix ----- 120 Gaston St., Kings Mountain, N. C.
 B. G. Beason ----- Boiling Springs, N. C.
 W. T. Furr ----- 609 Gardner St., Shelby, N. C.
 John Bell ----- Rt. 4, Shelby, N. C.

CENTENNIAL COMMITTEE

W. P. Biggerstaff, Chairman	Rt. 5, Shelby, N. C.
J. R. Howe	724 Blanton St., Shelby, N. C.
Mrs. Smoot Baker	Grover, N. C.
Mrs. W. P. Biggerstaff	Rt. 5, Shelby, N. C.
F. O. Champion	W. Sumter, Shelby, N. C.
Dr. Wyan Washburn	Boiling Springs, N. C.
C. O. Greene	Lawndale, N. C.
Dr. R. C. Campbell	W. Sumter, Shelby, N. C.
Mrs. S. O. Kirby	Cherryville Rd., Kings Mountain, N. C.
G. V. Hawkins	S. LaFayette, Shelby, N. C.

AUDITING COMMITTEE

Sam B. Wilson, Chairman	926 E. Marion St., Shelby, N. C.
L. E. Abbott	Kings Mountain, N. C.
E. G. Spurling	Fallston, N. C.

TRUSTEES

O. M. Mull, Chairman	115½ N. LaFayette, Shelby, N. C.
J. B. Keeter	Cleveland Apt., Kings Mountain, N. C.
C. E. Byers	Grover, N. C.

SUNDAY SCHOOL OFFICERS**GENERAL OFFICERS:**

J. R. Howe—Superintendent	724 Blanton St., Shelby, N. C.
Harlan Harris—Supt. of Evangelism	405 W. Marion, Shelby, N. C.
H. B. Alexander—Supt. of Vacation Bible Schools	Rt. 3, Shelby, N. C.
E. G. Clark—Supt. of Training	Rt. 1, Shelby, N. C.
Wilbur Wilson—Supt. of Enlargement	1545 Kings Rd., Shelby, N. C.
Mrs. Roy Propst—Secretary	Rt. 5, Shelby, N. C.
Clifford Hughes—Chorister	Shelby, N. C.
Mrs. E. T. Bailey—Pianist	Rt. 4, Shelby, N. C.

GROUP SUPERINTENDENTS

Kings Mountain District—Ira Falls	Kings Mountain, N. C.
Lattimore District—James R. Chapman	Boiling Springs, N. C.
Polkville District—Gordon Mode	Rt. 5, Shelby, N. C.
Shelby District—John R. Mauney	111 Palmer St., Shelby, N. C.

DEPARTMENT LEADERS

Cradle Roll—Mrs. A. M. Kiser	Waco, N. C.
Nursery—Mrs. Lewis E. Ludlum	Box 534, Shelby, N. C.
Beginner—Mrs. Tom Cobb	704 N. Washington St., Shelby, N. C.
Primary—Mrs. Forest Crowder	Lattimore, N. C.
Junior—Mrs. Clyde Bridges	521 S. LaFayette St., Shelby, N. C.
Intermediate—Jack Garrett	Shelby, N. C.
Young People—Miss LaLene Grigg	Rt. 5, Shelby, N. C.
Adult—Rev. R. F. Lancaster	Rt. 5, Shelby, N. C.
Extension—R. W. McAbee	Shannon St., Shelby, N. C.

ASSOCIATIONAL BAPTIST TRAINING UNION OFFICERS

GENERAL OFFICERS:

Mrs. Smoot Baker—Director Grover, N. C.
 John A. Hallman—Associate Director Rt. 2, Vale, N. C.
 Howard Hamrick—Secretary 630 S. LaFayette, Shelby, N. C.
 J. C. Jolley—Chorister 304 Cline Place, Shelby, N. C.
 Phyllis Furr—Pianist
 Ernest M. Smith—Pastor Advisor Rt. 4, Shelby, N. C.

GROUP DIRECTORS:

Shelby—Evans Green LeGrand St., Shelby, N. C.
 Lattimore—Don Cabiness Rt. 4, Shelby, N. C.
 Lawndale—L. T. Noggle Lawndale, N. C.
 Kings Mountain—

DEPARTMENTAL LEADERS

Story Hour Leader—Mrs. J. J. Guffey, -- 611 Gardner St., Sehlby, N. C.
 Junior Leader—
 Intermediate Leader—Mrs. John Elliott Rt. 2, Shelby, N. C.
 Young People's Leader—Miss Sara Posey ---- 2nd Bapt. Church, Shelby
 Adult Leader—Rev. Archie Hughes Dover Mill, Shelby, N. C.

GARDNER-WEBB JUNIOR COLLEGE

Phil L. Elliott—President Boiling Springs, N. C.
 Ben C. Fisher—Associate to the President Boiling Springs, N. C.
 J. O. Terrell—Dean Boiling Springs, N. C.
 Leonard A. Allen—Business Manager Boiling Springs, N. C.

THE WOMAN'S MISSIONARY UNION OFFICERS

Mrs. W. P. Biggerstaff—Superintendent Rt. 5, Shelby, N. C.
 Mrs. B. A. Harry—Associate Superintendent Grover, N. C.
 Mrs. L. H. Ledford—Secretary 822 E. Marion, Shelby, N. C.
 Mrs. Lowery Austell—Treasurer ---- 205 S. Thompson St., Shelby, N. C.
 Mrs. J. S. Blanton—Young People's Leader Lattimore, N. C.
 A. M. Kiser—R.A. Counselor Waco, N. C.
 Mrs. J. R. Cline—Stewardship Chairman Rt. 3, Shelby, N. C.
 Mrs. Roy Propst—Community Missions Rt. 5, Shelby, N. C.
 Mrs. Phil L. Elliott—Mission Study Chmn. Boiling Springs, N. C.
 Mrs. Allen Jones—Literature Chairman Rt. 2, Shelby, N. C.
 Mrs. O. P. Hamrick—Margaret Fund Chmn. Boiling Springs, N. C.

THE STANDING NOMINATING COMMITTEE

Walter Davis—Chairman Rt. 5, Shelby, N. C.
 B. Austell Earl, N. C.
 Mrs. Forest Crowder Lattimore, N. C.
 Osborne Lee Rt. 4, Shelby, N. C.
 Ws. J. R. Cline Rt. 3, Shelby, N. C.

AUXILIARY MEETINGS

The Woman's Missionary Union holds an annual meeting, April of each year. A full report of the last annual meeting will be found under Woman's Missionary Union Report. The next Annual Meeting will be held with the Zion Baptist Church in April, 1950.

THE GENERAL BOARD

The Association has a General Board that meets during each month of the year to do work of the Association between its sessions. This Board consists of two members from each church, the pastors, general officers of the Association, the heads of each department, President of Gardner-Webb College, and the members of the Associational Missions Council.

THE MEMBERS OF THE GENERAL BOARD

CHURCH	ADDRESS
ALLEN MEMORIAL	
Forrest Fortenberry	Rt. 1, Grover, N. C.
Datha Wright	Rt. 1, Grover, N. C.
BEAVER DAM	
E. D. Humphries	Rt. 4, Shelby, N. C.
Schieman McSwain	Rt. 4, Shelby, N. C.
BETHLEHEM	
Mrs. Charlie Spearman	Rt. 2, Kings Mountain, N. C.
Lamar Herndon	Rt. 2, Kings Mountain, N. C.
BETHANY	
Curtis L. Hambright	Grover, N. C.
S. M. Beam	Rt. 1, Grover, N. C.
BOILING SPRINGS	
B. G. Beason	Boiling Springs, N. C.
A. I. Jolley	Boiling Springs, N. C.
BUFFALO	
J. W. McGinnis	Rt. 1, Shelby, N. C.
J. W. Blanton	Rt. 1, Shelby, N. C.
CARPENTERS GROVE	
D. C. Carpenter	Rt. 1, Belwood, N. C.
E. L. Propst	Rt. 3, Lawndale, N. C.
CASAR	
Jesse King	Rt. 1, Lawndale, N. C.
L. C. Walker	Rt. 1, Lawndale, N. C.
COMMUNITY	
Deward Walker	Rt. 1, Lawndale, N. C.
W. F. Lowrance	Rt. 1, Lawndale, N. C.
DAVID	
Frank Shytle	Rt. 2, Kings Mountain, N. C.
Perry McSwain	Rt. 2, Kings Mountain, N. C.

DOUBLE SHOALS

Miss Betty Scism ----- Box 61, Shelby, N. C.
 Mrs. Fred Cornwell ----- Rt. 2, Lawndale, N. C.

DOUBLE SPRINGS

J. C. Washburn ----- Rt. 4, Shelby, N. C.
 C. B. Greene ----- Rt. 4, Shelby, N. C.

ELIZABETH

John A. Blanton ----- Rt. 3, Shelby, N. C.
 Chas. W. Spake ----- 910 Hawthorn, Shelby, N. C.

FALLSTON

Mrs. Stough Beam ----- Fallston, N. C.
 J. C. Royster ----- Rt. 5, Shelby, N. C.

FLINT HILL

Rex Ledbetter ----- Rt. 2, Shelby, N. C.
 Mrs. Clearey Hamrick ----- Rt. 3, Shelby, N. C.

GROVER FIRST

Hugh L. Borders ----- Grover, N. C.
 Mrs. J. B. Ellis ----- Grover, N. C.

KINGS MOUNTAIN FIRST

Miss Lula Mae Teague ----- 309 Kings St., Kings Mountain, N. C.

KINGS MOUNTAIN SECOND

J. C. King ----- Rt. 1, Kings Mountain, N. C.
 O. R. Gladden ----- Box 241, Kings Mountain, N. C.

KINGS MOUNTAIN MACEDONIA

T. W. Smith ----- Rt. 2, Kings Mountain, N. C.
 Obrean White ----- Kings Mountain, N. C.

KINGS MOUNTAIN TEMPLE

Mrs. Ernest Huffstettler ---- 307 Walker St., Kings Mountain, N. C.
 Milton Hope ----- Gaston St., Kings Mountain, N. C.

LATTIMORE

L. C. Toms ----- Lattimore, N. C.
 Mrs. N. B. Lee ----- Lattimore, N. C.
 Miss Lala Martin ----- Lattimore, N. C.

LAWNDALE

Mrs. Grover Eskridge ----- Lawndale, N. C.
 Mrs. Fred W. Denton ----- Lawndale, N. C.

LOVE VALLEY

Mrs. R. R. VanDyke ----- Rt. 2, Kings Mountain, N. C.
 Mrs. Lester VanDyke ----- Rt. 2, Kings Mountain, N. C.

MT. SINAI

W. H. Putnam ----- Rt. 2, Shelby, N. C.
 Victor Hamrick ----- Rt. 2, Shelby, N. C.

MULLS CHAPEL

C. A. Eddins ----- Rt. 5, Shelby, N. C.
 Walter Hoyle ----- Rt. 5, Shelby, N. C.

NEW BETHEL

Robt. Cline ----- Fallston, N. C.
 Boyd Beam ----- Lawndale, N. C.

NEW BUFFALO

E. F. Martin ----- Rt. 1, Blacksburg, S. C.
 J. E. McGinnis ----- Box 486, Shelby, N. C.

NEW HOPE

R. G. Turner ----- Rt. 2, Shelby, N. C.
 R. L. Nichols ----- Earl, N. C.

NEW PROSPECT

E. G. Clark ----- Rt. 1, Shelby, N. C.
 Willie Wright ----- Rt. 1, Shelby, N. C.

NEW CAMP CREEK

Willie Davis ----- Rt. 1, Shelby, N. C.
 Willie Sheppard ----- Rt. 1, Shelby, N. C.

NORMANS GROVE

Robert Warlick ----- Belwood, N. C.
 Mrs. J. P. Boggs ----- Rt. 3, Lawndale, N. C.

NORTH BROOK

Robert Adams ----- Rt. 1, Cherryville, N. C.
 Mrs. Robert Adams ----- Rt. 1, Cherryville, N. C.

OAK GROVE

J. S. Ware ----- Rt. 3, Kings Mountain, N. C.
 W. C. Blanton ----- Rt. 3, Kings Mountain, N. C.

OAK VIEW

T. L. Spearman ----- Rt. 1, Kings Mountain, N. C.
 Mrs. E. O. Gore ----- Rt. 1, Kings Mountain, N. C.

PATTERSON GROVE

Grady Scism ----- Rt. 1, Kings Mountain, N. C.
 Travis Wright ----- Rt. 3, Kings Mountain, N. C.

PATTERSON SPRINGS

George Borders ----- Patterson Springs, N. C.
 Alonzo Dellinger ----- Rt. 1, Grover, N. C.

PLAINS VIEW

Henry Bingham ----- Rt. 2, Lawndale, N. C.
 Raeford Wright ----- Rt. 2, Lawndale, N. C.

PLEASANT GROVE

C. E. Elliotte ----- Rt. 5, Shelby, N. C.
 Newell Wright ----- Rt. 1, Shelby, N. C.

PLEASANT HILL

J. Y. Kendrick ----- Rt. 1, Grover, N. C.
 Allen Thrift ----- Rt. 2, Shelby, N. C.

PLEASANT RIDGE

J. C. McClure ----- Rt. 4, Shelby, N. C.
Mrs. LaLa McSwain ----- Star Rt., Lattimore, N. C.

POLKVILLE

Mrs. W. Y. Horn ----- Rt. 1, Lawndale, N. C.
Mrs. Palmer Gold ----- Polkville, N. C.

POPLAR SPRINGS

Cree Hamrick ----- Rt. 2, Shelby, N. C.
A. T. Hamrick ----- 740 W. Warren St., Shelby, N. C.

PUTNAM MEMORIAL

Leonard McSwain ----- Rt. 3, Shelby, N. S.
Mrs. Howard Stricklin ----- Rt. 3, Shelby, N. C.

ROSS GROVE

Mrs. Ralph Allen ----- Rt. 5, Shelby, N. C.
Mrs. B. Roy Wilson ----- Rt. 5, Shelby, N. C.

SANDY PLAINS

S. D. Whitaker ----- Rt. 4, Shelby, N. C.
T. O. Wiggins ----- Rt. 4, Shelby, N. C.

SHELBY FIRST

Rev. H. E. Waldrop ----- 409 N. Washington, Shelby, N. C.
L. J. Baley ----- Drawer 60, Shelby, N. C.

SHELBY SECOND

Miss Sara Posey ----- 933 S. Morgan St., Shelby, N. C.
Everett Waters ----- 1102 Dodd St., Shelby, N. C.

SHELBY BETHEL

Gordon Mode ----- Rt. 5, Shelby, N. C.
Alfred Greene ----- 352 Grice St., Shelby, N. C.

SHELBY CALVARY

W. C. Cartee ----- 506 Blanton St., Shelby, N. C.
R. E. Moss ----- 306 Ford St., Shelby, N. C.

SHELBY DOVER

Osborne Lee ----- Dover Mill, Shelby, N. C.
Ladd Shields ----- Ora Mill, Shelby, N. C.

SHELBY EASTSDIE

J. F. Alexander ----- 1006 Buffalo St., Shelby, N. C.
W. B. Biggerstaff ----- 521 E. Warren St., Shelby, N. C.
Tom York ----- 216 Lineberger St., Shelby, N. C.

SHELBY HIGHLAND

T. R. Wright ----- Highland Ave., Shelby, N. C.
R. M. Porter ----- 335 Highland Ave., Shelby, N. C.

UNION

Mrs. A. D. Harris ----- Rt. 4, Shelby, N. C.
Hubert Hamrick ----- Rt. 5, Shelby, N. C.

VICTORY

J. D. Martin ----- Rt. 1, Grover, N. C.
 Robert Estes ----- Grover, N. C.

WACO

Mrs. W. H. Lutz ----- Waco, N. C.
 Mrs. Stough Miller ----- Rt. 2, Cherryville, N. C.

WALLACE GROVE

Maurice Carter ----- Rt. 5, Shelby, N. C.
 Tom Causby ----- Rt. 1, Shelby, N. C.

ZION

G. P. Irvin ----- 1012 N. LaFayette, Shelby, N. C.
 Walter Davis ----- Rt. 5, Shelby, N. C.

ZOAR

C. L. Hollifield ----- Rt. 3, Shelby, N. C.
 Mrs. Clyde Putnam ----- Rt. 3, Shelby, N. C.
 James Barnes ----- Broad St., Shelby, N. C.
 Mr. Robert Rippy ----- S. Washington St., Shelby, N. C.

- PASTOR MEMBERS OF GENERAL BOARD

Austin, B. F. ----- 601 Piedmont Ave., Kings Mountain, N. C.
 Alexander, H. B. ----- Rt. 3, Shelby, N. C.
 Baker, Smoot ----- Grover, N. C.
~~Biggerstaff, W. P.~~ ----- Rt. 5, Shelby, N. C.
 Blalock, Jesse ----- Rt. 4, Shelby, N. C.
~~Bobbitt, C. B.~~ ----- Box 232, Kings Mountain, N. C.
 Camp, W. G. ----- Mooresboro, N. C.
 Cantrell, J. R. ----- Boiling Springs, N. C.
 Cannon, D. Boyd ----- Rt. 3, Shelby, N. C.
~~Carpenter, R. B.~~ ----- Belwood, N. C.
 Conrad, M. A. ----- Rt. 2, Shelby, N. C.
 Crow, C. C. ----- Box 266, Shelby, N. C.
~~Davis, G. R.~~ ----- 2486 West Gastonia, N. C.
 Dellinger, Coy H. ----- Crouse, N. C.
 Digh, D. W. ----- 209 Gidney St., Shelby, N. C.
 Dobbins, Paul B. ----- Rt. 5, Gaffney, S. C.
 Fogleman, T. W. ----- 108 Fulton St., Kings Mountain, N. C.
 Furr, W. T. ----- 609 Gardner St., Shelby, N. C.
~~Gore, E. O.~~ ----- Rt. 1, Kings Mountain, N. C.
 Greene, C. O. ----- Lawndale, N. C.
 Hallman, John A. ----- Rt. 2, Vale, N. C.
 Hardin, N. S. ----- Rt. 4, Shelby, N. C.
 Harrill, Hugh F. ----- Rt. 4, Shelby, N. C.
 Harris, Harlan H. ----- 405 W. Marion St., Shelby, N. C.
 Harris, W. W. ----- 914 S. LaFayette St., Shelby, N. C.
 Hicks, E. B. ----- 1012 Buffalo St., Shelby, N. C.
 Howe, J. R. ----- 724 Blanton St., Shelby, N. C.
 Jenkins, J. L. ----- Boiling Springs, N. C.
 Kiser, A. M. ----- Waco, N. C.

Ludlum, Lewis E. (Missionary) ----- Box 534, Shelby, N. C.
 McDaniel, E. L. ----- Rt. 1, Ellenboro, N. C.
 McSwain, W. L. ----- Rt. 2, Kings Mountain, N. C.
 Monroe, W. F. ----- Waco Rd., Kings Mountain, N. C.
 Mull, Ottis ----- Rt. 1, Vale, N. C.
~~Pinkix, L. C.~~ ----- 120 Gaston, Kings Mountain, N. C.
 Redding, Earl M. ----- Rt. 2, Gastonia, N. C.
 Roberts, Lawrence ----- Rt. 5, Shelby, N. C.
 Sailors, L. E. ----- Rt. 1, Mooresboro, N. C.
 Smart, Chess ----- Rt. 1, Conley Springs, N. C.
 Smith, E. M. ----- Rt. 4, Shelby, N. C.
 Suttle, J. W. ----- 708 W. Marion St., Shelby, N. C.
 Taylor, Thomas D. ----- Rt. 2, Lawndale, N. C.
 Teague, G. C. ----- Rt. 5, Shelby, N. S.
 Walker, Roy ----- Box 393, Cherryville, N. C.

DEPARTMENT HEAD MEMBERS OF THE GENERAL BOARD

Mrs. B. G. Harry
 Biggerstaff, Mrs. W. P., Supt. W.M.U. ----- Rt. 5, Shelby, N. C.
 Howe, J. R., S. S. Supt. ----- 724 Blanton St., Shelby, N. C.
 Baker, Mrs. Smoot, B.T.U. Director ----- Grover, N. C.
 Elliott, Phil L., President of Gardner-Webb ----- Boiling Springs, N. C.
 McSwain, Luther, Beautification ----- Rt. 2, Kings Mountain, N. C.
 Waters, L. A., Visual Aid Director ----- 216 Maple St., Shelby, N. C.
 Champion, F. O., Brotherhood Director ----- W. Sumter, Shelby, N. C.

ASSISTANT PASTOR OR EDUCATIONAL DIRECTOR MEMBERS OF THE GENERAL BOARD

7 Mrs. L. A. Jones
 Jones, Miss Cothenia—Boiling Springs ----- Boiling Springs, N. C.
 Jolley, J. C.—Shelby Eastside ----- 3041 Cline Place, Shelby, N. C.
 McGinnis, J. E.—New Buffalo ----- Box 486, Shelby, N. C.
 Myers, Miss Mable—Shelby Dover ----- Rt. 4, Shelby, N. C.
 Posey, Miss Sara—Shelby Second ----- 933 S. Morgan St., Shelby, N. C.
 Teague, Miss Lula—Kings Mountain First ----- 309 Kings St., Kings Mtn.

MESSENGERS ATTENDING THE 1949 SESSION OF THE ASSOCIATION

ALLEN MEMORIAL—Mrs. Brady Lail, J. C. Fortenberry, and Clarence Wright.

BEAVER DAM—Z. B. Nolan, R. W. McCurry, C. A. McSwain, W. H. Humphries, O. Z. Morgan, Bill Jones, Mrs. Broughton McGinnis, Mrs. Eugene Hamrick, Mrs. W. H. Hamrick, Schiemon McSwain, Rev. J. W. Suttle, Mrs. Mildred Wilson, Mrs. V. C. Justice, Mrs. Berry McSwain, and Claude Brown.

BETHLEHEM—Mrs. Charles Spearman, Mrs. Hal Morris, Mrs. Lee McDaniel, Mr. and Mrs. Earl Morris, Lee McDaniel, B. P. Dixon, Charles Spearman, and Rev. and Mrs. T. W. Fogleman.

- BETHANY**—Mr. and Mrs. P. K. Neely, Mrs. I. W. Blackburn, W. D. Childers.
- BOILING SPRINGS**—A. I. Jolley, Dr. and Mrs. W. W. Washburn, Mrs. Felix Hamrick, Mrs. Cade Greene, Mrs. Ladd Hamrick, D. W. Moore, Lyman Martin, B. G. Beason, C. I. Putnam, Mrs. C. E. Hamrick, C. L. Hamrick, Lansford Jolley, H. A. Howington, Mrs. W. D. Moore, Sr., Rev. J. L. Jenkins, Miss Cothenia Jones, and J. F. Moore.
- BUFFALO**—Boyd Wilson Mr. and Mrs. J. W. Blanton.
- CARPENTERS GROVE**—Carl Carpenter, Edgar Cooke, Howard Sain, and E. L. Propst.
- CASAR**—O. T. Carpenter, J. C. Palmer, Miss Zelma Downs, C. A. Wortman, Miss Ruth Brittain, and Rev. R. B. Carpenter.
- COMMUNITY**—Deward Walker, Mr. and Mrs. Joe Davis, and Rev. Roy Walker.
- DAVID**—Mrs. P. H. McSwain, I. J. Falls, Mrs. Wiley Allen, Miss Jean McSwain, Luther McSwain, and Rev. W. L. McSwain.
- DOUBLE SHOALS**—E. B. Spangler, Ralph Spangler, Joe Bowen, Mrs. A. S. Spangler, Miss Evelyn Harrill, C. M. Spangler, and Rev. C. O. Greene.
- DOUBLE SPRINGS**—Sammie Brooks, J. E. Davis, Lowell McSwain, B. B. Scruggs, A. L. Calton, J. C. Washburn, C. C. Padgett, and J. S. Gillespie.
- ELIZABETH**—Mrs. Charlie Wright, Mrs. James Cornwell, Mrs. J. R. Cline, P. M. Mauney, Rev. and Mrs. D. Boyd Cannon.
- FALLSTON**—Ralph Royster, Yates Williams, J. C. Royster, W. F. Hamrick, P. O. Ross, Wyte Royster, and Rev. Lawrence Roberts.
- FLINT HILL**—L. N. Harrill, Mrs. Graham Weaver, Rex Ledbetter, Marvin Anthony, and Rev. M. A. Conrad.
- GROVER FIRST**—Mrs. B. F. Bird, Mrs. H. L. Beam, Mrs. W. I. Beam, B. F. Bird, Rev. and Mrs. Smoot Baker.
- KINGS MOUNTAIN FIRST**—Mr. and Mrs. J. C. Keller, J. R. Roberts, A. W. Kincaid, W. A. Williams, Rev. and Mrs. L. C. Pinnix.
- KINGS MOUNTAIN SECOND**—D. D. Lankford, C. M. Lankford, Robert Oates, J. C. King, Mrs. Minnie Wright, Sam McAbee, Mrs. C. M. Lankford, Mrs. Lucille Gladden, Mrs. Florence Carroll, Rev. B. F. Austin.
- KINGS MOUNTAIN MACEDONIA**—T. W. Smith, Mrs. C. F. Compton, Joyce Cloninger, Mrs. M. B. Caldwell, Joyce Jenkins, Rev. and Mrs. C. B. Bobbitt.
- KINGS MOUNTAIN TEMPLE**—Paul Ledford, Hudson Bridges, E. B. Cook, Mrs. Ed Huffstetler, and Rev. W. F. Monroe.
- LATTIMORE**—Chas. B. Hamrick, Mrs. N. B. Lee, Mrs. T. A. Lattimore, George Fite, Mrs. J. A. McBrayer, Rev. J. R. Cantrell.
- LAWNDALE**—Fred Denton, T. W. Towery, Forrest Walker, Mrs. Grover Eskridge, and Mrs. Burgin Southards.
- LOVE VALLEY**—Mrs. J. P. VanDyke, Mrs. Robert VanDyke, Mrs. Mary Melton, S. W. Melton, and Rev. and Mrs. Earl M. Redding.

- MT. SINAI**—Foy B. Putnam, C. S. Bridges, Miss Ocie Harrill, Yates Putnam, C. V. Harrill.
- MULLS CHAPEL**—Mr. and Mrs. Charlie Wallace, C. A. Eddins, L. R. Whitaker, Rev. E. L. McDaniel.
- NEW BETHEL**—W. E. Falls, Frank Spurling, W. W. Lattimore, Mrs. Boyd Beam, and Robt. Cline.
- NEW BUFFALO**—F. A. Connor, Mrs. John Martin, Mrs. R. A. Bookout, and Rev. N. S. Hardin.
- NEW HOPE**—Mrs. Hartness Gibson, Mrs. Kate White, Burie Hopper, Jackson Sapaugh, S. H. Austell, and Hugh F. Harrill.
- NEW PROSPECT**—J. L. Allen, Paul Hord, Mrs. J. D. Clark, E. G. Clark.
- NEW CAMPS CREEK**—Willie Sheppard, Carl Brooks, Mrs. Willie Sheppard, Rev. L. E. Sailors.
- NORMANS GROVE**—DeLove Davis, Ellis Spurling, Lloyd Boggs, W. T. Warlick, Rev. John A. Hallman.
- NORTH BROOK**—Mr. and Mrs. Lonnie Lingerfelt, Mrs. Lee Bess, and Rev. Coy H. Dellinger.
- OAK GROVE**—Mrs. Frank, Mrs. Walter Ware, Lem Camp, and Melvin Lovelace.
- OAK VIEW**—T. Ed Bumgardner, Hoyt Patton, E. O. Jolley, Mrs. Hoyt Patton, and Rev. and Mrs. E. O. Gore.
- PATTERSON GROVE**—Hugh Falls, Edwin Moore, Grady Scism, Mrs. Forrest Hord, Mrs. Eugene Patterson.
- PATTERSON SPRINGS**—Mozell McSwain, W. J. Dellinger, Mrs. W. J. Dellinger, George M. Borders, and Rev. Jesse Blalock.
- PLAINS VIEW**—Henry Bingham, Dave Upton, Mr. and Mrs. Theodore Bingham, Mart Greene, John Angle, and Rev. Thomas D. Taylor.
- PLEASANT GROVE**—C. E. Elliott, Press Grigg, Loyd Hamrick, John Turner, Ed Hamrick, Newall Wright, Mr. and Mrs. Stonewall Williams.
- PLEASANT HILL**—Robert Gantt, Carl Dover, W. M. Hendrick, Mrs. J. Y. Kendrick, J. J. Neal, Marvin Stroup, Quinn Kendrick, and Wray Barrett.
- PLEASANT RIDGE**—J. Z. Walker, Mr. and Mrs. Grover McClure, Mrs. Clandis McSwain, G. L. Hamrick, and P. L. Blanton, Rev. W. G. Camp.
- POLKVILLE**—Mrs. C. C. Warlick, Hugh Elliotte, Mrs. Tom DePriest.
- POPLAR SPRINGS**—W. W. Jones, Harrill Hamrick, Howard Bridges, Miss Elmiere Hamrick, Gene Lattimore, J. D. Elliotte, John B. Hamrick.
- PUTNAM MEMORIAL**—(New)—Leonard McSwain, Mrs. Howard Strickland, and Mrs. James R. Webber.
- ROSS GROVE**—Mr. and Mrs. L. H. Ledford, Nester G. Hamrick, F. S. Dedmon, D. C. Pruett, and Mrs. Clyde Dover.

SANDY PLAINS—Mrs. Luther Walker, S. D. Whitaker, Miss Joyce Whitaker, H. H. Grayson, L. F. Jenkins, Rev. W. S. Jones.

SHELBY FIRST—F. O. Champion, Lee B. Weathers, Jesse Bridges, Rev. H. E. Waldrop, O. V. Hamrick, L. T. Hamrick, A. V. Hamrick, O. M. Mull, Rush Hamrick, Sr., Carver Wood, Mal Spangler, Sr., Henry Edwards, Rev. Lewis Ludlum, L. J. Baley, Mrs. L. J. Baley, Mrs. Rush Stroup, Mrs. R. B. Costner, Mrs. Roy Propst, Mrs. Reid Misenheimer, B. S. Greene, Mrs. A. B. Bonstell, Mrs. L. P. Williams, Mrs. J. C. Whitaker, Mrs. Carl Putnam, Mrs. James Roberts, Miss Mary Sue Thompson, A. D. Allen, Mrs. J. W. Suttle, and Rev. Harlan Harris.

SHELBY SECOND—Mrs. Fay Allen, Mrs. L. N. Buchanan, W. S. McCurry, Ben McSwain, A. H. Hinson, Charles Colquit, Jr., Mrs. B. B. Blanton, Otha Collins, Miles Baker, Miss Sara Posey, and Rev. and Mrs. Woodrow Harris.

SHELBY BETHEL—C. O. Bridges, Gordon Mode, Alfred Greene, Mrs. W. A. Young, and Rev. D. W. Digh.

SHELBY CALVARY—Faye Doty, Miss Katie Hamrick, D. D. Willis, Mrs. Ruth Hoyle, C. D. Sailors, W. C. Cartee, Mrs. James Wright, R. E. Moss and Rev. and Mrs. W. T. Furr.

SHELBY DOVER—Mrs. B. F. Morgan, Mrs. A. B. Nanney, Miss Mable Myers, Mrs. W. D. Johnson, R. F. Lancaster, George H. Dover, Osborne Lee, W. H. Jackson, B. E. Price, L. M. Shields, and Rev. E. M. Smith.

SHELBY EASTSIDE—Mrs. R. E. Roberts, Mr. and Mrs. Hugh Conley, Mrs. O. C. Blanton, Alfred Blanton, J. C. Jolley, and Rev. and Mrs. E. B. Hicks.

SHELBY HIGHLAND—Mrs. R. M. Porter, Miss Laura Porter, R. M. Porter, Jesse Harrill, and Rev. J. R. Howe.

UNION—Mrs. W. W. Mauney, J. C. Campbell, Mrs. A. D. Harris, Miss Vertie Champion, and Rev. and Mrs. G. C. Teague.

VICTORY—Mrs. Lucille Earney, Lee Earney, Mrs. Julie Dixon, and Rev. J. R. Davis.

WACO—W. H. Dodd, M. C. Whitworth, S. L. Dellinger, W. N. Pope, John Wacaster, and Rev. A. M. Kiser.

WALLACE GROVE—Maurice Carter, Jr., Zero Johnson, Miss Patsy Grayson.

ZION—Mrs. Ann Baron, Mrs. Bobbie Rudasill, Mrs. Frank Cornwell, Mr. and Mrs. Bill Horn, Mrs. D. T. Horn, W. L. Simmons, G. T. Cabaniss, James Wilson, G. P. Irvin, Tom Cornwell, Walter Davis, and Rev. and Mrs. W. P. Biggerstaff.

ZOAR—Mrs. John Elliott, Lester Allen, Mrs. Kenneth Hollifield, and Rev. H. B. Alexander.

VISITORS ATTENDING THE ASSOCIATION

Those representing the Denominational Work—Mrs. John Wacaster, W.M.U. Representative of the State; Dr. L. L. Carpenter of the Biblical Recorder; Mr. Claude Gaddy of the Education Council; Dr. W. K. McGee of the Baptist Hospital; Mr. Harvey Gibson, B.T.U. Director of the State; Mr. Horace Easom, Brotherhood Work; Dr. Zeno Wall of the Baptist Orphanage; Rev. R. M. Hauss of the Allied Church League; Rev. J. C. Canipe, Supt. of Evangelism; Mr. M. H. Kendall of Mars Hill College.

Members of the Gardner-Webb Glee Club—Rev. and Mrs. Stephen Morresette, Misses Evelyn Tedder, Geraldine Turnmire, Eleanor Henry, Doris Grigg, Eula Mae Keener, Doris Jean Walker, Betty Logan, Jeanette Smith, Jewell Brackett, Bernice Lane, Bobbie Wray. Messers. Bill Kincaid, O. G. Morehead, Jr., Roy Lee Smith, Paul Williams, F. R. Wagner, Bob Mullinax, Gene D. Freeman, Charles Stafford, Zeb Moss, L. B. Thompson.

Rev. Pat Henry, Spindale, N. C., Spencer Church; Dr. R. C. Campbell, Little Rock, Ark.; Rev. H. G. Matheny, Cabarrus Association; Rev. C. N. Everhart, Pilot Mountain Association; Rev. Wayne C. Foster, Tar River Association; Rev. and Mrs. Emory Holden, Jr., New South River Association; Mr. and Mrs. F. S. Bean, A.R.P.

Methodist—W. J. Bridges, Polkville, N. C.; Alan Browning, III, Kings Mountain, N. C.; Mr. and Mrs. Forrest L. Ellis, Shelby, N. C., Noland Howington, Moderator of the Green River Association.

Sandy Run Baptist Association—Glen Whitaker, Rev. Tom Lawrence, Mrs. Felix Wagner, J. Edgar Bishop, B. B. Harris, Rev. W. F. McGinnis, Mrs. W. F. McGinnis, Miss Nancy C. McGinnis, Rev. Leonard Harrill.

Gaston Baptist Association—Mr. and Mrs. E. H. Biggerstaff, Mrs. B. H. Carpenter, Mrs. G. Y. Tate, and Rev. and Mrs. E. S. Elliotte.

CLERKS NOTE—Only the messengers that signed cards at the Sessions of the Association are listed above. The visitors who are listed are those that signed visiting cards.

REVISION OF THE CONSTITUTION

Kings Mountain Baptist Association

Adopted—October 21, 1949

PREAMBLE: We, the messengers of Baptist Churches in the County of Cleveland, State of North Carolina, and territory adjacent thereto, do hereby propose to establish and maintain the order and rules of a district Association in conformity to the following plan:

NAME

ARTICLE 1: The name of this organization shall be the Kings Mountain Baptist Association.

MEMBERSHIP

ARTICLE 2: The Association shall be composed of Baptist Churches of Cleveland County and adjacent territory which are now members, and any other Baptist Churches which may thereafter be admitted as herein provided.

ARTICLE 3: Churches applying for membership shall agree, if received, to come under the watch-care of the Association for a period of one year or more at the discretion of the Association. During this period such churches shall be entitled to all rights and privileges of the Association except holding office and voting.

ARTICLE 4: Each church shall elect annually messengers to the appointed meeting of the Association. Such messengers must be duly certified to in the annual church letter to the Association, and appointed on the following ratio: Two messengers, in addition to the pastor, for each church having a membership not exceeding fifty, and one additional messenger for each increase of fifty or major fraction thereof, provided that the total number of messengers shall not exceed ten.

PURPOSE

ARTICLE 5: The prime purpose of this Association shall be to counsel together for the enlargement and strengthening of God's Kingdom by promoting unity and growth among the churches composing it; and by co-operating with the Baptist State Convention and the Southern Baptist Convention and their agencies in the work of Missions, Christian Education, and Social Service.

MEETINGS

ARTICLE 6: The Association shall meet annually on Thursday after the third Sunday in October and continue for two days or longer in the judgment of the Committee on Order of Business, subject to the Approval of the Association. The place of meeting shall be determined at the previous session.

OFFICERS

ARTICLE 7: The officers of the Association shall be a Moderator, Vice Moderator, Clerk-Treasurer, and Historian, all of whom shall be elected annually by the Association at its annual meeting and hold office until their successors are elected.

DUTIES OF OFFICERS

ARTICLE 8: It shall be the duty of the Moderator to, in advance of, the annual meeting, communicate with the host churches requesting that they appoint from their church membership a committee on enrolment; to open the meetings punctually at the appointed time; to appoint a committee on committees in the opening session; to enforce the rules; to preserve order; and to exercise all the prerogatives of a presiding officer according to the principles of established parliamentary usage.

ARTICLE 9: It shall be the duty of the Vice Moderator to discharge the duties of the Moderator in his absence.

ARTICLE 10: It shall be the duty of the Historian to collect and put in some durable form all facts of particular interest about each of the member churches and report at each session of the Association.

ARTICLE 11: It shall be the duty of the Clerk-Treasurer to keep an accurate record of the proceedings of the Association; to superintend the printing and distribution of the minutes; to keep on file the printed minutes and other important documents belonging to the Association; to receive and pay over to the proper parties all the money contributed direct to the Association, and make an annual report to the Association. For his services he shall be paid annually an amount recommended by the Finance Committee and approved by the Association.

COMMITTEES AND THEIR DUTIES

ARTICLE 12: The committees of the Association shall be divided into three categories:

SECTION A. Those appointed in advance of the annual meeting:

1. A Committee on Enrolment appointed as prescribed in Article 8; and any others he may deem advisable or necessary.

SECTION B. Those named to report at the annual meeting at which they were appointed:

1. A Committee on Committees appointed as prescribed in Article 8. It shall be the duties of this committee to appoint, a committee on Place and Preachers for the next session, a Committee on Resolutions, and any other deemed advisable.
2. Committee on Place and Preacher, whose duty shall be to recommend to the Association churches at which the next session shall meet and preachers that will preach at the next session.
3. A Committee on Resolutions whose duties shall be to draw up and present to the Association suitable resolutions of appreciation and expressions of sentiments on any matter chosen by the committee.

SECTION C: Those named by the Association to serve throughout the year who shall report at the next annual session of the Association:

1. A Committee on Order of Business, which shall consist of the Moderator, Vice Moderator, Clerk-Treasurer, Superintendent of Sunday School, Director of the Training Union, and President of the Woman's Missionary Union. It shall be the duty of this committee to report a suggested order of business as soon as feasible after the opening of the Association. When adopted, their report shall become the order of the Association and cannot be changed except by vote of the body.
2. A Committee on Nominations, whose duty it shall be to nominate all officers of the Association (Article 7), a Committee of Trus-

tees, an Auditing Committee, General Officers of the Baptist Training Union, General Officers of the Sunday School, and members of the Associational Missions Council, a Committee on Nominations, a majority of which shall be Laymen, and any other officer, committee, council member, or representative to be elected to serve throughout the year. Nominations by this committee shall not preclude nominations from the floor.

3. A Committee of Trustees, whose duty it shall be to hold in trust any property, money, endowment, or other securities of said Association.
4. An Auditing Committee, whose duty shall be to audit the Clerk-Treasurer's books annually and report annually to the Association.

THE GENERAL BOARD

ARTICLE 13: At each annual session a General Board shall be appointed by the Association, which shall consist of the general officers of the body together with the Superintendent of Sunday School, Director of the Baptist Training Union, The President of the Woman's Missionary Union, President of Gardner-Webb College, Members of the Associational Missions Council, the pastor of each church composing the Association, and two members from each church which members shall be nominated by the church or by delegates present from the church and approved by the Association.

ARTICLE 14: This board shall hold meetings monthly, and shall exercise the functions and discharge the duties usually committed to an executive board or committee. The purpose and plan of this General Board in all its meetings shall be to promote the interest and carry forward the work of the Association and of its constituent churches as this work is outlined in Article 5.

ARTICLE 15: In case of emergency the General Board may select a time and place and arrange for a special business session of the Association; provided that no action taken in such extra sessions of the body shall conflict with any action of a previous regular session, and provided that the business of such extra sessions shall be limited to the object for which it was convened, and the membership of such special business session shall be made up of the messengers elected by the churches and accredited to the previous regular session.

THE MISSIONS COUNCIL

ARTICLE 16: The Association shall elect annually an Associational Missions Council composed of fifteen members, a chairman of which is designated.

ARTICLE 17: Said Council shall meet at least three times annually. The first meeting shall be held within ten days of the Associational meeting at which the council was elected. At the first meeting the council shall divide itself into such committees as seem necessary to provide a well rounded and worthy associational missions program and emphases. It shall have at least the following committees:

A. Administration and Finance. The chairman of which shall be elected chairman of the council. This committee shall receive monthly reports from the Associational Missionary; advise with him periodically in matters pertaining to his work and activities; make an associational budget to be presented to the association providing for financing the work for the coming year; and to have general oversight of work of the Council.

B. Missionary Planning. This committee shall survey communities in need of Baptist work and Ministry; seek to enlist churches to sponsor work in such communities; give guidance and assistance in proper location and organization of new Baptist work; provide information for and make recommendations to the Association as to missionary needs which might be met by co-operative efforts; provide information to the State Mission Board which might be helpful in meeting missionary needs; consult with churches anticipating membership in the Association and making recommendations to the Association in matters of this kind; and leading the Association in a program of meeting such missionary needs.

C. Institutional and Interracial. This Committee shall seek to enlist churches to have a worthy part in ministry to folks in our public institutions, and to be of service as friend and brother in Christ to people among us of other races.

RULES OF ORDER

RULE 1. The business session of the Association shall be opened and closed with prayer.

RULE 2. All officers shall complete their work as soon as practicable after the closing of the session. The newly elected officers shall assume, at the close of the session, all duties incumbent upon said officers relating to the work of the ensuing Associational year.

RULE 3. Every report, resolution, or amendment offered to the Association shall be submitted in writing if requested by the Moderator.

RULE 4. No person shall speak more than twice on the same subject, except by the permission of the Association.

RULE 5. Messengers present from one third of the churches shall constitute a forum.

RULE 6. All questions shall be decided by majority vote of the members present except changes in the constitution, which shall require two thirds vote of those present. Proposed changes must be presented to the Association the first day it is in session and voted on the second day.

RULE 7. All questions of order not herein provided for shall be decided by general parliamentary law by Kerfoot.

CONFESSIONS OF FAITH

1. We believe the Scripture of the Old and New Testaments to be a divinely inspired revelation from God.

2. We accept the New Testament alone as revealing the only plan of salvation and as the final authority in all matters of church policy and practice.

3. We believe Jesus Christ as revealed in the New Testament to be the Sun of God and the divine Savior of all who truly accept Him as such.

4. We believe in the personality of the Holy Spirit, and in His abiding presence with the spirit of all the elect of God, in His quickening presence with the spirit of the unregenerate moving to repentance and faith, in His witnessing presence with the spirit of the regenerate comforting and guidance throughout life in His sustaining presence in the experience of death, and in His continuing presence in the life to come.

5. We believe salvation is attained through spiritual regeneration in the act of repentance and acceptance of Jesus as Savior.

6. Sincere spiritual redemption was made available by the death, burial and resurrection of Jesus, we believe that every regenerate person should symbolize his own salvation by being buried with Him in baptism.

7. We believe that a local church modeled after the New Testament order is a company of regenerate persons voluntarily joined together for the purpose of extending God's Kingdom on earth.

8. We believe that each church should from time to time, as a congregation, celebrate the Lord's Supper as a memorial to Him.

9. We believe in the ultimate triumph of God's Kingdom over all opposing powers, and that every regenerate soul shall have a share in that triumph.

THE KINGS MOUNTAIN BAPTIST ASSOCIATION PROCEEDINGS

THE FIRST DAY, OCTOBER 20, 1949

1. The Ninety-Ninth Annual Session of the Kings Mountain Baptist Association met with the Beaver Dam Baptist Church, nine o'clock A.M. Songs: "He Leadeth Me" and "Glory To His Name," were sung. The Chorister and Pianist, Rev. and Mrs. L. C. Pinnix of the Kings Mountain First Baptist Church, doing the leading and accompanying.

2. Rev. J. W. Suttle, Moderator, called for the Introductory Sermon. The Pastor of the Patterson Springs Baptist Church, Jesse Blalock, had been appointed for this Message. He asked that E. O. Gore, Pastor of the Oak View Church read the Scripture lesson. He read the Scripture Lesson from Galatians 6:12, and led the prayer. Pastor Bla-

lock's subject: "Gloring In The Cross of Christ." Prayer by the Messenger.

3. The Beaver Dam Baptist Church of which the Moderator is Pastor had appointed an Enrollment Committee to register the Messengers and Visitors. The Committee was as follows: Misses Hildegard McSwain, Jean McSwain, Ann Calahane and Evelyn Hester.

4. Moderator J. W. Suttle, Pastor of the Beaver Dam Baptist Church, called to order the Ninety-Ninth Session of the Kings Mountain Baptist Association for the Thirty-Seventh consecutive year. The Association was organized upon the following motion: That those registered and later enrolled shall constitute the body to transact business.

5. Upon the recommendation of the Fellowship Committee of the Association the following Churches were accepted into the full fellowship of the Association: New Camp Creek, Shelby Highland and Victory. That the new Church, Putnam Memorial be received into full fellowship of the Association. The Messengers of the churches were received with all the privileges of the body.

6. W. P. Biggerstaff, Chairman of the Program Committee, presented the following program for the order of business. On Motion it was accepted with any necessary changes, and adopted as the order of Business.

THE PROGRAM

OCTOBER 20 — BEAVER DAM

9:00—Introductory Sermon	Jesse Blalock
9:35—Organization	
9:45—Christian Education	Wyan Washburn
Address	Claude Gaddy
10:45—Woman's Missionary Union	Mrs. W. P. Biggerstaff
10:00—Associational Missions	Woodrow Harris
Address	Lewis Ludlum
11:30—Music	Gardner-Webb Choir
11:40—Missionary Sermon	E. B. Hicks
12:20—Adjourn for Lunch	
1:30—Singing, Scripture Reading, Prayer	D. W. Digh
1:45—Report from General Board	Lawrence Roberts
2:00—Cooperative Program	C. O. Green
Address	J. C. Canipe
2:45—Sunday School	L. T. Hamrick
3:15—Christian Literature	R. B. Carpenter
Address	L. L. Carpenter
3:40—Public Morals	E. M. Smith
Address	R. M. Hauss
4:00—Adjourn	

NIGHT SESSION — CALVARY

7:00—Baptist Training Union ----- John Hallman
 8:00—Laymen's Committee ----- Horace Easom, Tom Cornwell

OCTOBER 21 — DOVER

9:00—Singing, Scripture Reading, Prayer ----- Talmadge Downs
 9:15—Business
 9:30—Orphanage ----- Walter Davis
 Address ----- Zeno Wall
 9:55—Hospital ----- L. C. Pinnix
 Address ----- W. K. McGee
 10:25—American Bible Society ----- W. G. Camp
 10:40—Radio Commission ----- Ben Fisher
 11:00—Relief and Annuity ----- M. A. Conrad
 11:20—Doctrinal Sermon ----- J. L. Jenkins
 12:00—Adjourn for Lunch
 1:30—Singing, Scripture Reading, Prayer ----- H. B. Alexander
 1:45—World Relief ----- W. L. McSwain
 2:00—Church Beautification ----- Luther McSwain
 2:10—Memorials ----- J. R. Cantrell
 2:25—Election of Officers
 2:40—Inspirational Message ----- W. T. Furr
 3:10—Final Adjournment

Respectfully submitted,
 W. P. Biggerstaff, Chairman

7. The New Pastors of the Churches that had come to the Association were welcomed into the Fellowship of the body.

Visitors out of the bounds of the Association were recognized and their names appear in the roster.

8. The Report on Christian Education—Gardner-Webb College. The Report was given by Dr. Wyan W. Washburn, chairman of the Board of Trustees of the College. The following spoke to the Report: Dr. Wyan W. Washburn, President Phil L. Elliott, Associate President Ben C. Fisher, Arnold Kincaid and Claude Gaddy of the Education Council, Raleigh, N. C. The Report Adopted.

REPORT OF CHRISTIAN EDUCATION

Gardner-Webb is on my mind. Gardner-Webb is in my heart. What Gardner-Webb is doing and can do has set me on fire. I hope this morning to put the college on your mind, in your heart and set you on fire. What I am saying for Gardner-Webb is for all our great Christian colleges and for Christian education everywhere, but Jesus said for us to begin at home.

There are now seven colleges in the Baptist family, being Wake Forest Meredith, Mars Hill, Gardner-Webb, Wingate, Campbell and Chowan, the latter re-opening after a seven year lapse. In addition, there is the school of nursing of the Baptist Hospital at Winston-Salem. The basic principles of Christian education which I want to mention this morning will apply to all these schools, although the particulars are about our nearest college.

Gardner-Webb has some 432 students enrolled from 47 counties and 10 states and territories. There are more than 30 consecrated faculty members teaching subjects and teaching character to the boys and girls enrolled there.

The scriptural background for my remarks about education can be found in the 10th chapter of Matthew where Jesus was sending out his disciples, and in the 28th chapter where he was telling them to "Go teach all nations. . . . and teach all things." It is an all inclusive program, and teaching and spreading Christianity is the biggest job in the world. This task should challenge every Christian and every church.

First, we have the Commission to teach, which I have just mentioned.

Second, we must teach with Authority, for we alone have the truth to teach. We must not teach falsehood, half truth or error, as the scribes, but with power and perseverance.

Third, we must teach at the beginning, our own Christian people, our own leaders, our preachers, teachers, missionaries, educational secretaries and all the others who will and can come to us. That thing, Gardner-Webb is doing, with a total of 114 people preparing themselves for definite full time Christian service, with 53 for the Ministry, 17 for Religious Education, 32 for Music, 11 for Missionary to a foreign field.

Fourth, we must teach all the time, day and night, in season and out of season, week days and Sundays and to all eternity, for the forces of evil and ignorance know no rest or relaxation.

Fifth, we must teach, as Jesus taught and counseled his disciples to teach, with Compassion. We must love the lost, the unlearned and must use parables, metaphors, similies, and examples to teach them. We must preach and heal at the same time, but must at the same time continue the teaching.

Sixth, we must teach two things as the scripture plainly tells us and that is, first, that "The kingdom of Heaven is at hand," and second, that we must obey the Law of Love. . . . love God with all our hearts, minds, soul and bodies, and to love our neighbor likewise. That is all we have to teach, tho it is necessary to give some technical information about Biology, Chemistry, History and other subjects that we may have diplomas, degrees and credits.

Finally, the way to teach is not only in the home and church, but in our Christian schools, such as Gardner-Webb. To teach well, we must have the best teachers, the best equipment, the best places to stay. Such equipment costs money and we will be called on to give it, and give, and give and give. But it is worth it; more, it is necessary if we are to make Christ king and firmly and fully and eternally establish his Kingdom here on the earth.

Respectfully submitted,
W. Wyan Washburn

9. Song, "Jesus Keep Me Near The Cross" was sung by the congregation.

10. Lewis E. Ludlum, Chairman of a committee appointed by the General Board to suggest revising the Constitution, presented copies of the suggested changes to the body to be considered the second day.

11. The Report of the Woman's Missionary Union was presented by Superintendent Mrs. W. P. Biggerstaff. Those speaking to the report were: Mrs. Biggerstaff, Mrs. John Wacaster, Representative of the State W.M.U.; President Phil L. Elliott of Gardner-Webb College who gave a report of the Presidents new home. The report adopted.

THE WOMAN'S MISSIONARY UNION REPORT

LIGHT FOR THE WORLD

John 8:12—Jesus said, "I am the light of the world."

Psalms 36:9—"In Thy light shall we see the light."

1 John 1:7—"But if we walk in the light, as He is in the light, we have fellowship, one with another."

Light for the whole world was the tie that bound the founders together in 1888 when Woman's Missionary Union was organized, and is the tie that binds us to the people of every race today. Organization spreads light, and from this small beginning has grown in sixty years to a union with 49,613 different organizations—spreading the light. Study, prayer, missionary education and giving have been stressed through the years.

Knowledge brings light to the individual. In the territory of the Southern Baptist Convention, 295,800 magazines published by the Woman's Missionary Union go to regular subscribers. With an increasing number reading the features presented each month as well as the programs, Missionary zeal will grow in their hearts. Through Mission study we gain knowledge. Each year members are guided in a well planned mission study course. Apart from the regular study course more women are showing interest in reading books on missions for the information. Through the years mission study has a vital influence in helping women and young people become more interested in missionary activities.

Through Community Missions the Light shines. Light for the whole world means shining where ever there is darkness. Meeting the physical needs often prepares the heart to receive the message of Jesus, which is the primary purpose of Community Missions. Opportunities to carry the light to the dark places of the world are often in walking distance of our doors.

Practicing stewardship gives light. Woman's Missionary Union has sought to teach tithing and stewardship of possessions through the teachings of the Scripture. How far advanced is the Kings Mountain Association in this? As reported there are 559 tithers in the W.M.U. During 1949 the Woman's Missionary Union gave to all causes, including the cooperative program, \$17,594.51. The advanced programs adopt-

ed by our churches will call for increased giving. Woman's Missionary Union will work to help meet the needs as they arise.

Since the call for more missionaries for China came, the Miss Lottie Moon Woman's Missionary Union has promoted special weeks of prayer for missions. At the close of these offerings have been made which have enabled the light to shine anew. These offerings make the Margaret fund possible. The Margaret fund is for the college expenses of sons and daughters of missionaries. Some of these are now engaged in missionary work, some are preparing themselves to go back to mission fields to carry on the work of their parents and to begin new mission work.

Through its graded system, Woman's Missionary Union provides a missionary organization for each age group; the Sunbeam Band for children four to nine; the Junior Girls Auxiliary for girls nine to thirteen; Intermediate G.A. for girls thirteen to sixteen; the Junior R.A. Chapter for boys nine to thirteen; Intermediate R.A. Chapter for boys thirteen up. Young Woman's Auxiliary for young women from sixteen to twenty-five. These organizations provide light for young people and help them to prepare themselves to carry the light to others.

Kings Mountain Woman's Missionary Union has 53 organizations for the great host of young people within our bounds. Figures in minutes and those reported to Young People's leader differ.

Woman's Missionary Union is grateful to God for all the blessings upon her efforts to spread the light. Together we move forward knowing the world's darkness will flee before the radiant light of the knowledge of God in Christ Jesus as we continue to be lightbearers for Him.

Respectfully submitted,

Mrs. W. P. Biggerstaff

MINUTES OF THE 55TH ANNUAL SESSION OF THE KINGS MOUNTAIN WOMAN'S MISSIONARY UNION MORNING SESSION

The Fifty-Fifth Annual Session of the Woman's Missionary Union of the Kings Mountain Association was held with the First Baptist Church, Shelby, North Carolina, April 27, 1949.

Mrs. W. P. Biggerstaff, the Superintendent presided over the meeting, which opened at 10 o'clock for the morning session. The theme for the day's program was "That the World May Know." "O! For a Thousand Tongues to Sing," the hymn for the year for Woman's Missionary Union, was used for the opening hymn.

The watchwords for the year were quoted in unison—"Laborers Together with God" I Cor. 3:9. "To Make Known to the Sons of Men His mighty acts and the glorious majesty of His Kingdom" Psalm 145:12.

The morning devotion was given by Miss Sarah Posey, Educational Director of the Second Baptist Church, and Mrs. Joe D. Hamrick sang "Leave All and Follow Thee" in connection with the devotional. Miss Posey led in prayer at this time.

Gracious words of welcome were given by Mrs. George Carpenter, president of the W.M.U. of the hostess Church.

Upon motion made by Mrs. Walter Davis the calling of the roll was dispensed with and those who had registered up to this time be recognized as constituting the organization and those registering later be included as members of the organization and that the program in the hands of the delegates with whatever changes may be necessary be adopted as order of business for the day.

A business session was entered into and the roll call of churches with Woman's Missionary Unions showed there were thirty-five of them present. The superintendent appointed the following committee to serve for the year:

Nominating—Mrs. Rush Stroup, Mrs. C. R. Spangler, and Mrs. A. M. Kiser.

Time and Place—Mrs. W. W. Harris, Mrs. Pleas Cabaniss, and Mrs. Coleman Elliott.

Appreciation—Mrs. B. F. Bird and Mrs. P. L. Elliott.

Visitors recognized were: Mrs. Terry Smart, Superintendent of the Hickory Division of Woman's Missionary Union, Miss Ruth Province, State Executive Secretary, Miss Irene Chambers of the Home Mission Board, Mrs. J. W. Costner, Newland, North Carolina, Mrs. Tom Roberts of the Gaston Association, a large number of pastors of the Kings Mountain Association were present, among them Rev. Lawrence McSwain who very recently moved into the association.

At this time reports from the officers of the Woman's Missionary Union were heard.

Mrs. W. P. Biggerstaff, the superintendent gave a very encouraging report. One hundred and forty new members had been gained and the contribution for all special causes had increased during the past year.

Mrs. Carl Putnam, Mission Study Chairman, made her report. She stated there had been a gain over last year in both study and reading in our mission study work.

Mrs. Roy A. Propst, Community Missions Chairman, made an interesting report on the work in our homes and communities, stating that we have a direct call to do mission work in them as well as abroad.

Mrs. J. R. Cline, Stewardship Chairman, brought a very interesting and encouraging report on stewardship in our Association. Since organized stewardship began in 1941 in this association the number of tithers has increased from 115 to 525 but we are a long way off toward the goal of every member a tither by 1950. She urged every leader to re-emphasize tithing by teaching, prayer and practice. Mrs. B. A. Harry of Grover Baptist Church gave a personal testimony on what tithing had meant to her life as a christian.

The Treasurer, Mrs. Lowery Austell, made the following report:

RECEIPTS

In Bank beginning of year -----	\$2,103.21
Associational Expense Fund -----	205.75
Gardner-Webb President's Home -----	843.25
Gardner-Webb Scholarship Fund -----	50.00

TOTAL ----- \$3,202.21

DISBURSEMENTS

Associational expense to Mrs. Biggerstaff -----	130.00
Gardner-Webb President's Home -----	2,312.04
Divisional expense Fund—Mrs. H. Elliott -----	15.00

\$2,457.04

BALANCE IN BANK ----- \$ 745.17

Mrs. W. P. Biggerstaff presented Miss Ruth Province, State Executive Secretary, to the association. This was her first visit to the Kings Mountain Association. She spoke on "The Urgency of Making Him Known in Our State." Home Missions, State Missions and Foreign Missions go hand in hand said Miss Province and that time is swiftly passing. Now or never is the time to help show the world that Christianity is the only way.

Hymn—O Zion Haste.

At this time, Miss Irene Chambers, representative of Home Mission Board, was introduced to the association. She brought us a wonderful message on the subject "That the World May Know." Attention was brought to our minds that we as Christians are careless so often in helping to send the gospel to those who are anxious to hear it.

An offering made at the close of Miss Chamber's talk amounted to \$71.81 for State and Home Missions.

The morning services were closed with a prayer by Rev. Harlan Harris and included in this was blessings for the noon-day meal.

The afternoon session was opened with singing of hymn "Christ for the World we Sing."

Mrs. J. S. Blanton gave the Devotional for the afternoon, reading Psalm 145. Mrs. John A. Wacaster led in prayer.

A report on our Young People's work was given by Mrs. J. D. Blanton of Lattimore Baptist Church, Young People's Leader for the Association. Despite the fact that the polio epidemic crippled all young people's meetings, work showed some gain over last year's report in offerings and seven new organizations. Also 115 new members. The report as a whole was very gratifying and great hopes are anticipated for the coming year.

Rev. A. M. Kiser, the Royal Ambassador Counselor in the Kings Mountain Association spoke to us next. If Christ is known He will be made known through our Young People for they will be our leaders of tomorrow. He urged that we use every opportunity to train and teach them for the task that will be theirs.

A report on the work of our "Training School at Louisville, Ky.," was given by Mrs. O. P. Hamrick, Margaret Fund Chairman. She enlarged on the thought of "Trained for Service" and told us of the high standard North Carolina students are reaching in our training schools.

Hymn—"The Kingdom is Coming."

Mrs. L. C. Pinnix of the Business Woman's Circle reported that this work only recently begun was growing and asked for the prayers and support of all the women.

At this time it was voted to resume the night session for our Young People.

The following committee made reports.

Time and Place—Mrs. W. W. Harris, Chairman.

The Hostess Church will be Zion Baptist Church. The time will be decided by the Executive Committee.

The Nominating Committee—Mrs. Rush Stroup, Chairman.

Officers for 1949

Superintendent—Mrs. W. P. Biggerstaff ----- Rt. 5, Shelby, N. C.
 Asso. Superintendent—Mrs. B. A. Harry ----- Grover, N. C.
 Secretary—Mrs. L. H. Ledford ----- E. Marion St., Shelby, N. C.
 Treasurer—Mrs. Lowery Austell ---- 205 S. Thompson St., Shelby, N. C.
 Young People's Leader—Mrs. J. S. Blanton ----- Lattimore, N. C.
 R. A. Counselor—Rev. A. M. Kiser ----- Waco, N. C.
 Stewardship Chairman—Mrs. J. R. Cline ----- Shelby, N. C.
 Community Missions Chmn.—Mrs. Roy Propst ----- Shelby, N. C.
 Mission Study Chmn.—Mrs. P. L. Elliott ----- Boiling Springs, N. C.
 Literature Chmn.—Mrs. Allen Jones ----- Rt. 2, Shelby, N. C.
 Margaret Fund Chmn.—Mrs. O. P. Hamrick ---- Boiling Springs, N. C.

This report was accepted and the above were elected.

Mrs. Rush Stroup in a very impressive manner gave the charge to the new officers and led in the dedicatory prayer.

Appreciation Committee—Mrs. B. F. Bird.

We, the members of the Woman's Missionary Union of Kings Mountain Association wish to express our appreciation and thanks for this fine day together.

We are deeply grateful for the privilege of meeting in this beautiful Church, and for the warm welcome and fellowship accorded us, and for the delicious lunch enjoyed by all.

The program so well planned "That the World May Know" has brought us much inspiration. The devotionals, special music, reports

and heart stirring messages have inspired us to greater service as "Laborers together with God." To make known to the sons of men His mighty acts, and the glorious majesty of His Kingdom.

Respectfully submitted,

Mrs. B. F. Bird

Mrs. P. L. Elliott

Rev. Lewis Ludlum associational missionary of the Kings Mountain Association spoke to the women and offered his assistance in helping to plan for any phase of the work, especially Young People's camps.

Mrs. Terry Smart, Superintendent of Hickory Division brought the closing message on the subject "Assist me to Proclaim."

She opened her discussion by showing us we can help to proclaim be visitation, enlistment, prayer, study and family worship. Mrs. Smart led closing prayer of the session.

Mrs. W. P. Biggerstaff, Supt.

Mrs. L. H. Ledford, Secretary

Moderator Suttle ask that the Vice Moderator W. P. Biggerstaff preside.

12. The Standing Committee report was presented by Chairman Woodrow W. Harris. The Report adopted and the following Committees appointed:

- a. The Committee to Nominate Standing Nominating Committee.

E. M. Smith, Chairman, Shelby Dover Church.

C. E. Elliotte, Pleasant Grove Church.

Mrs. John Elliotte, Zoar Baptist Church.

- b. Committee on Place and Preachers.

L. C. Pinnix, Chairman, Kings Mountain First Baptist Church.

J. E. McGinnis, New Buffalo Baptist Church.

Mrs. L. H. Ledford, Ross Grove Baptist Church.

- c. Committee on Resolutions.

J. R. Cantrell, Chairman, Lattimore and Poplar Springs Churches.

C. R. Spangler, Double Shoals Baptist Church.

Mrs. Y. V. Weaver, Shelby Eastside Baptist Church.

Respectfully submitted,

Woodrow W. Harris, Chairman

R. B. Carpenter

Mrs. L. C. Pinnix

Mrs. Charlotte Swift

Sam McAbee

13. The Associational Missions Report presented by Chairman Woodrow W. Harris. Chairman Harris and Missionary Ludlum spoke to the Report. The Report Adopted. Moderator Suttle takes the Chair again. He presents the Boy Scouts of the Beaver Dam Church.

REPORT OF THE ASSOCIATIONAL MISSIONS COMMITTEE

In addition to the General Association, and the Associational Sunday School, Training Union, W.M.U. and Laymen's Organizations, Kings Mountain Baptist Association also has a large committee known as the Missions Committee. The purpose of this committee is to help our association meet its missionary needs by providing adequate information as to the needs, and to lead all of our churches to participate in missionary activities. In order to insure that various phases of the work shall be adequately taken care of, the Committee is subdivided into groups, with each group responsible for a particular part of the work. The finance and administration group is to lead the churches in financial support of the work and to have general oversight of the work of the committee. Another group is responsible for making surveys of different communities where there might be need of new Baptist work. Still another part of the committee is to provide for the religious needs of people in the city and county institutions, and to promote interracial cooperation and goodwill. Each of these groups have made their contributions to the overall work of the Missions Committee, but by the very nature of its particular task, the group responsible for sponsoring new work has had perhaps the largest share in the accomplishments for this year.

Besides approving applications for pastoral aid from the State Convention of Highland, Allen Memorial and Plains View churches, this group also approved applications from Bethany, Victory, Calvary and Highland churches for state convention aid for the purchase of lots. In collaboration with the Second Baptist Church of Kings Mountain, which purchased a house and remodeled it into a chapel, a Sunday School was started which has grown until the building is full each Sunday. Also the First Baptist Church of Shelby, in collaboration with the group, purchased a lot in Shelby, looking toward the beginning of a new work in the future.

Perhaps the most significant work of this part of the Missions Committee was in the organization of the Putnam Memorial Baptist Church, located near the sales barn on Earl Road. About a year ago a census was taken of the section concerned, which revealed that there were a number of Baptist people who lived there and good prospects for work to be set up there. Early in the summer a revival was held under the Association's tent, with Rev. T. W. Fogleman doing the preaching. Following the revival, a Vacation Bible School was held with an enrolment of 60. From that beginning a Sunday School was organized which has grown to an enrolment of around 80. The interest and enthusiasm for the work continued to grow to such an extent that on Sunday, October 16, the Putnam Memorial Baptist Church was organized with 19 members. It is significant that the church was named for Bro. D. F. Putnam who was serving as chairman of this particular work at his death, and who made such a significant contribution to the cause of setting up the new churches in his life-time.

At this meeting of the association a resolution from the General Board will be presented which is a result of the study of this group on the Missions Committee. In considering the fact that at the present time there are eight or ten communities in need of Baptist work, it is being suggested that the association itself assume the responsibility for the purchase of lots for new work, provision for which is being made in the budget for this year.

Though the membership of the Missions Committee is made up of pastors and members from the various churches, the guiding light behind the entire program is our Associational Missionary, Lewis E. Ludlum. In his capacity as missionary, he touches every phase of the work. He has given guidance, counsel and planning to the work of the Missions Committee. He has worked with the Associational Sunday School Superintendent in promoting a net increase in enrollment this year of 1600 in the Sunday Schools, and with the Vacation Bible School Superintendent in having 47 schools, the largest number in our history. He played a very important part in the successful state-wide Sunday School Clinic held in our association in January. He has given time for planning and counsel with the Training Union Director, and led out in planning and preparing for the simultaneous revivals held last spring. Beside these special tasks he has given a great amount of time to the individual churches. He has served as supply when called upon. He has taught Sunday School and Training Union Study Courses when requested. He has served as advisor in building programs and other capacities, along with helping in the ordination of deacons and preachers. The entire work of the association feels the effect of his diligent, intelligent and consecrated labor.

So much for the past. What of the future? Surely, we will not be satisfied with what has been done, but will look at the great opportunities that yet challenge and call to us. Let us see these communities that need a Baptist church—not next year, not two years from now—but right now. Let us see the unchurched, the unenlisted, the unsaved, and resolve that we are going to do something about it. To such end then, your committee calls upon each pastor and each church to support wholeheartedly that which you have called upon as to lead you in. You will pay in regularly and gladly and uncomplainingly at least the amount equal to nine percent of your pastor's salary as this year's budget calls for and is the minimum amount necessary to adequately carry on the work. You will cooperate happily with suggestions of the committee concerning setting up new work. You will pray and lend a helping hand toward reaching Kings Mountain Baptist Association for Christ.

Respectfully submitted,

Woodrow W. Harris

14. The Gardner-Webb College Glee Club rendered the following Musical program under the direction of Rev. Stephen Morrisette:

"O Lord How Shall I Meet Thee"

"Jesus Priceless Treasure"

"Built On A Rock"

"Beautiful Saviour"

An offering was made for the Glee Club—\$108.31.

15. The Clerk gave a Summary Digest of the Church Letters.

SUMMARY DIGEST OF CHURCH LETTERS FOR 1949

	1949	1948	
Pasors' Salaries	\$ 96,815.78	\$ 86,652.31	
Property Values	1,906,700.00	1,474,100.00	
For Local Work	536,083.28	368,143.19	
For Mission and Benevolances	121,914.06	145,092.83	
Co-operative Program	41,054.63	36,607.43	
Orphanage	15,029.81	13,390.52	
Hospitals	4,259.74	4,490.76	
Schools	29,596.34	59,594.16	
Associational Missions	5,793.43	5,009.29	
	1949	1948	1947
Baptisms	1,075	280	687
Church Members	18,974	18,076	17,586
Enrolled in Sunday School	15,744	13,894	13,735
Average Attendance, Sunday School	8,542	7,584	7,421
Vacation Bible Schools	47	32	27
V.B.S. Attendance	4,570	7,169	2,638
Baptist Training Unions	37	33	32
B.T.U. Enrollment	3,205	2,710	2,514
W.M.U. Enrollment	3,229	2,946	2,734
Brotherhood Enrollment	246	106	73

Respectfully submitted

Lawrence Roberts

16. The Beautiful Baptistary Scene of the Beaver Dam Church was presented by Pastor Suttle. One of the local members did the Painting, Grady Humphries. The report of the remodeling of the Church was given by the pastor. The welcome to the noon meal was given to all.

17. E. B. Hicks, Pastor of the Shelby Eastside Baptist Church brought the Missionary Message to the Association at this time. The Scripture Lesson was from Isa. 44:1-28. The Subject: "The Missionary Gospel." The closing prayer and blessing for the noon meal. Recessed for the noon hour.

AFTERNOON SESSION AT BEAVER DAM

The Song, "Majestic Sweetness Sits Enthroned" was sung. Scripture reading and prayer was given by D. W. Digh, Pastor of the Shelby Bethel Baptist Church.

18. E. B. Hicks, Chairman of a Special Committee appointed by the General Board to recommend to the Association as to the advisability to purchase or build a home for the Missionary, was presented and discussed and revised and adopted as follows:

SPECIAL COMMITTEE REPORT

A special committee appointed by the General Board of the Kings Mountain Baptist Association to bring a recommendation as to the advisability of purchasing a home for our associational missionary.

As the matter now stands, we are paying \$45.00 per month on his house which amounts to \$540.00 per year. In ten years we will pay \$5,400.00 rent and still not own a home for our missionary. According to our Clerk, we will have a surplus of \$2,000.00 at the beginning of the new year, which we believe will be enough to make the down payment on a home; and the \$45.00 per month that we are now paying would make the payments each month. After the home is paid for, we will save \$540.00 each year, and have a permanent place for our missionary to live. Your committee believes that this proposition is a good business investment, a wise policy, and a forward step in the Kingdom's progress.

We, therefore, recommend that the association appoint a building committee, with the authority to build or buy a home for our associational missionary.

Respectfully submitted,
E. B. Hicks
B. G. Beason
Joe Washburn

19. The General Board's Report was read by the Clerk. A motion was made to adopt the Report and consider the recommendations one at the time.

(1.) Centennial Year. Substitute Motion: That we substitute 1950 for the Year 1951. Adopted. Motion to extend the Time. Time Extended.

(2.) Adopted as read.

(3.) Adopted as read.

(4.) Adopted as Presented.

(5.) Last paragraph adopted, 2% increase which makes 9% for Associational Missions.

(6.) Ammended after discussion: That the Introductory Sermon be at 11:30, and that the Session next year begin at 9:30 A.M.

The Report was adopted as ammended as a whole.

THE REPORT OF THE GENERAL BOARD OF THE ASSOCIATION

The General Board of the Kings Mountain Baptist Association has been throught the year promoting the work of the Association. The following recommendations were presented to the General Board for approval: Mr. G. P. Irvin of the "Preachers and Place Committee" presented an invitation from Shelby Calvary Church for the night session of the association; it was further recommended that the Kings

Mountain Association co-operate with the State Convention in World Relief Program of February 6-13, 1949.

The following Resolutions from the Missions Committee were approved: (1) That we approve heartily the application of Allen Memorial, Shelby Highland, and Plains View for pastoral aid to State Board for 1949, to the amount of \$650.00 for Allen Memorial, \$520.00 for Shelby Highland, and \$520.00 for Plains View. (2) That request for aid on lots to the State Board be approved: Bethany, Shelby Calvary, Shelby Highland and Victory Churches. These request were approved and sent to M. A. Huggins, Secretary of State Board.

The election on beer and wine was held January 8, 1949, which was a victory for the Dry Forces of the county. The Sunday School Administrative Clinic was held the last week in January with the First Baptist Church, Shelby. In March, the Simultaneous Meetings were held in the Churches of the Association.

Upon the request of the Mission Planning Committee to the General Board, the Committee was authorized to establish a mission on Route 28 in Shelby, Sales Barn Community. The tent that was owned by Shelby First, Second, Bethel and Calvary was presented to the Association as a gift. It was accepted. The General Board asked the Mission Planning Committee to take the tent and arrange for the use of it. The tent is now in the Grove in Sales Barn Community. An Evangelistic meeting was held in June, Rev. T. W. Fogleman doing the preaching. Later a Vacation Bible School was held. On July 10, 1949, a Sunday School was organized. The interest continued to grow as the Missions Committee worked with the people of the community. On October 9, 1949, a Council was called to advise with the group as to the organization of a church. The group became a constituted Baptist Church Sunday, October 16, 1949 with a beginning membership of nineteen.

The Chairman, Smoot Baker of the Institutional and Interracial Committee, made the following report of its work: That Christian Services have been carried on with regularity in the Shelby City Jail, County Home, and Prison Camp. Goodwill and Fellowship have been promoted among Negro groups. The feeling is wholesome in relation to our Institutions.

The following recommendations are presented to the Association in Session for consideration:

1. That we use the year 1950 as our Centennial Year of celebration and suggest that we work through the year in all phases of our work to make this a great Centennial year in the history of the Kings Mountain Association.

2. That the date, September 3, 1950 and week following, be Stewardship Associational Week in the Churches with Rev. E. L. Spivey of the State Mission Board as Director.

3. That a Sunday School Clinic for the whole Association be a part of our work next year. The Clinic to be held in April and that Mr. L. L. Morgan, leader of Sunday School Work of North Carolina, be the Director.

4. That the Association continue the Mission program and the Churches cooperate in sending the 9% for the budget as follows:

Missionary's Salary	\$2,800.00	Clerk's hire and Secre-	
Car Travel Expense	600.00	tarial help	300.00
Meetings and Conventions	100.00	Sunday School Work	100.00
Office, Telephone,		Baptist Training Union	
Postage, Stationary	200.00	Work	100.00
Retirement Fund	112.00	Brotherhood Work	50.00
Rents	540.00	For Tent Expenses	100.00
Printing, Mailing, Delivery		Incidentals	100.00
of Minutes	\$ 700.00	TOTALS	\$5,802.00

5. That inasmuch as several communities within the bounds of the Kings Mountain Baptist Association have either increased in population or the present population trend is such that New Baptist work is needed or will be needed within the near future, and

Inasmuch as the policy of encouraging individual churches to purchase property and sponsor work has not succeeded, as likewise, the policy of depending on the State Mission Board has not provided much help, due to the limited income and the unprecedented demand for such throughout the State, therefore,

Be it resolved, (1) that the General Board of our Association in session, June 20, 1949 go on record approving a change of policy to that of assuming responsibility for purchasing lots looking forward to establishing new work as a part of our Associational Mission program. (2) That the General Board authorized the Associational Mission Committee to make a thorough survey of the needs for next year, a report of which is to be received and thoroughly discussed at the September meeting of the General Board looking forward to the adoption and plans for execution being perfected at the Annual Meeting of the Association in October. (3) Whereas, the Mission Committee survey reveals the following need for establishment of work in the territory between West Warren Street, new 74 Highway and Gold Street, Shelby; Beaumont, Belvedere and Kings Road, Shelby; Highway 26 south and east of Shelby, Putnam Memorial Church; the junction of Highways 74 and 150 east from Shelby; Kings Mountain east 74 and Bessemer City Highways; Between Beulah Methodist Church, Kings Mountain Highway north of Patterson Grove Baptist Church and South Waco Sections; and Toluca Section North Highway 18.

Therefore, the General Board recommends that an increase of 2% to the Associational Mission Fund be asked of the Churches as a program of finance for this work. This would bring in from the Churches around \$1,800.00 for the purpose of buying lots in these needy fields, upon which work may be established.

6. It is recommended that the Introductory Sermon be dispensed with and that the Session next year begin at 9:30 A.M. (Finally after a

motion to amend and on the second day a motion to reconsider the matter. It stands as follows: That the Introductory Sermon be merged with the Missionary Message at the noon hour. and that the Session begin at 9:30 each day.)

Respectfully submitted,
Lawrence Roberts

THE TREASURER'S REPORT

October 1, 1948 to September 30, 1949

RECEIPTS:

Balance September 30, 1948—

Union Trust Co., Shelby, N. C. -----	\$ 3,211.40
Contributions from the Churches for Associational Fund ----	5,771.08
Sunday School Administrative Clinic -----	311.50
Evangelistic Meetings in March -----	507.60
Gardner-Webb College Glee Club offering at Association ----	150.08
Pictures for Minutes from Casar and Shelby	
Second Churches -----	28.00
Baptist State Convention on Missionary's Salary -----	250.00
Baptist State Convention for V.B.S. Worker -----	105.00
Sunday School Board, Ridgecrest, Cottage Rent -----	100.00
Supply Work of Missionary -----	30.00
Evangelist Meetings—Tent and Putnam Memorial S. S. -----	180.95
V.B.S. for Co-operative Program, Putnam Memorial -----	12.25
World Relief to pay expenses -----	144.84
Church gifts for Putnam Memorial Movable Building -----	375.59
Grand Total of Receipts -----	\$11,178.29

EXPENDITURES:

Missionary Lewis E. Ludlum—Salary -----	\$ 2,550.00
Balance of 1947 Salary of Missionary -----	37.50
Car-Travel Expense of Missionary -----	600.00
Meetings, Conventions and Conferences -----	82.12
Office—Telephone, Postage, Stationary, etc. -----	198.71
Retirement Fund to M. A. Huggins, Treasurer -----	102.00
Rents -----	540.00
Christmas Gift to Missionary -----	100.00
Printing of Minutes, Delivery, Mailing, Programs -----	856.72
Pictures for Minutes -----	28.00
Clerk's Hire -----	200.00
Sunday School Work, L. T. Hamrick, Supt. -----	98.17
Baptist Training Work, John A. Hallman, Director -----	71.30
Laymen's Work, Tom Cornwell, President -----	34.47
For Evangelist Meeting Expense in March -----	420.69
Expense of Shipment of World Relief Goods -----	144.63
Ridgecrest Baptist Assembly for Cottage Rent -----	105.00
To Gardner-Webb College Glee Club -----	150.01
Vacation Bible Worker's Expense -----	141.00
Evangelistic Meeting, Tent, Piano, Lights, Lumber, etc. -----	280.69

Treasurer, M. A. Huggins, Co-operative Program V.B.S. Tent --	12.25
Sunday School Clinic -----	336.95
Incidentals: Stamps, Cards, Paper, Printing, etc. -----	75.58
Total Expenditures -----	\$ 6,965.79
In hand for Putnam Memorial Movable Building -----	\$ 375.59
Balance in Bank, Union Trust Co.,	
October 1, 1949—General Fund -----	\$ 3,836.91
Grand Total -----	\$11,178.29

Received from the Missionary for Supply:

Shelby Bethel Church -----	\$10.00
Casar -----	5.00
New Camps Creek -----	5.00
Ross Grove -----	10.00
Total -----	\$30.00

RECEIVED FROM THE CHURCHES

	S. S. Clinic	Evangelis- tic S. A. Meetings	Portable Bldg.	Asso. Missions
Allen Memorial -----	Dinner	\$ 3.00	\$ 8.00	\$ 10.50
Beaver Dam -----	Dinner	15.00		201.60
Bethlehem -----	\$25.00		33.75	98.84
Bethany -----	3.70			
Boiling Springs -----	Dinner			237.50
Buffalo -----				23.00
Carpenters Grove -----				45.00
Casar -----	7.50	7.50		75.00
Community -----				10.00
David -----	7.75	5.00		25.00
Double Shoals -----	Dinner			123.25
Double Springs -----	Dinner	15.00		126.00
Elizabeth -----	Dinner	25.00		227.50
Fallston -----	12.00	12.50	50.00	84.00
Flint Hill -----	Dinner			155.00
Grover First -----	Dinner			162.51
Kings Mtn. First -----	30.00	20.00	55.00	281.20
Kings Mtn. Second -----				14.49
Kings Mtn. Macedonia -----	12.10			240.25
Kings Mtn. Temple -----	7.00		17.00	100.00
Lattimore -----	13.65			63.00
Lawndale -----				69.50
Love Valley -----				63.00
Mt. Sinai -----	10.60	10.00		3.00
Mulls Chapel -----				97.25
New Bethel -----	Dinner	10.00		52.50
New Buffalo -----	3.20		10.00	84.00
New Hope -----	15.00	14.40		

New Prospect	Dinner			35.00
New Camps Creek				
Normans Grove			15.00	30.00
North Brook	12.00			123.24
Oak Grove	14.50	15.00		106.90
Oak View		7.00		30.00
Patterson Grove		11.00		105.00
Patterson Springs	15.00	17.00	25.78	71.40
Plains View				12.00
Pleasant Grove	Dinner	12.50		42.00
Pleasant Hill	Dinner	15.00	65.06	70.00
Pleasant Ridge	Dinner		25.00	91.00
Polkville	9.00	10.00		84.00
Poplar Springs	Dinner			
Ross Grove	Dinner	10.35		84.00
Sandy Plains	15.00	15.00		77.00
Shelby First	Homes	100.00		425.00
Shelby Second	Dinner	35.00	71.00	378.80
Shelby Bethel	20.00			219.00
Shelby Calvary	25.00	20.00		100.00
Shelby Dover	25.00	25.00		273.00
Shelby Eastside	25.00	25.00		327.60
Shelby Highland	3.50			30.00
Union	Dinner	10.35		68.00
Victory				6.25
Waco	Dinner	12.00		84.00
Wallace Grove				5.00
Zion	Dinner	20.00		147.00
Zoar	Dinner	10.00		70.00
TOTALS	\$311.50	\$407.60	\$375.59	\$5,771.08

The Sunday School Expenses for Administrative Clinic

Postage, Stationary, Telephone, etc.	\$ 17.35
Star Publishing Company, Printing	24.20
The following Churches for Meals: Allen Memorial, Beaver Dam, Elizabeth, Double Shoals, Double Springs, Grover First, Pleasant Grove, Boiling Springs, Flint Hill, New Bethel, New Prospect, Pleasant Hill, Pleasant Ridge, Poplar Springs, Ross Grove, Shelby Second, Union, Waco, Zoar, and Zion	
\$10.00 each	200.00
Mrs. L. T. Bailey for supervision of the kitchen of the First Baptist Church, Shelby	40.00
Incidentals	5.00
Star Publishing Company for Advertising and Pictures	50.40
Total Expense	\$336.95

For Simultaneous Evangelistic Expenses:

The Hotel Charles for Room and Meals	60.51
Star Publishing Company for advertising	121.20

Radio Station WOHS for 12 Programs	120.00
Shelby First Church for Advertising	118.20
Incidentals78
Totals	\$420.69

Received for World Relief

Expense:

Beaver Dam	\$ 8.00
Fallston	3.00
New Camps Creek	8.72
Pleasant Hill	5.25
Shelby Second	75.00
Shelby Dover	32.87
Wallace Grove	8.00
Waco	2.00
Lewis E. Ludlum	2.00
Totals	\$144.84

Paid Out:

Campbells Dept. Store	
for Shoes	18.00
Southern Baptist Relief	
Center, New Orleans,	
La.	26.63
Lutz-Yelton — Freight	
to New Orleans, La.	100.00
Totals	\$144.63

The Report of the Putnam Memorial Tent Finances:

Received:

Rev. Guy Johnson, Rent	
for Tent	\$ 15.00
Offering during Evan-	
gelistic Meeting	95.63
V.B.S. for Co-op.	12.25
Sunday School Offer-	
ing for Piano	65.32
Gift — Buffalo Church --	5.00
Transfer from General	
Fund	86.91
Totals	\$280.11

Amount Paid Out:

Advertising	\$ 23.00
V.B.S.	55.65
Lumber for Seats, etc. --	79.51
Duke Power — Lights --	27.03
Piano — Property of	
S. S.	55.00
Rev. T. W. Fogleman ---	40.00
M. A. Huggins, Treasurer	
Co-op.	12.25
Totals	\$292.44

Received for Portable Building for Putnam Memorial Sunday School:

Allen Memorial	\$ 8.00	New Buffalo	\$ 10.00
Bethlehem	33.75	Pleasant Hill	65.06
Fallston	50.00	Pleasant Ridge	25.00
Kings Mtn. First	55.00	Patterson Springs	25.78
Kings Mtn. Temple ---	17.00	Shelby Second	71.00
Norman's Grove	15.00	Totals	\$375.59

This money is to be used for purchasing lumber for the Portable Putnam Memorial Building.

Respectfully submitted,
Lawrence Roberts

20. The Cooperative Program Report was read by O. C. Greene, Pastor of the Lawndale, Double Shoals and New Bethel Churches. Rev. J. C. Canipe, Superintendent of Evangelism of North Carolina spoke to the Report. Report adopted.

COOPERATIVE PROGRAM REPORT

Just as every father ought to support every member of his family in a fair and impartial manner, so should every Baptist Church support every undertaking of Southern Baptists. The plan which we have adopted looking toward that aim is the Cooperative Program. It has many advantages; we mention two.

1. It is all-inclusive. This plan follows the program of Jesus. While on this earth He was busy teaching, preaching, and healing. His was not a restricted ministry but it extended to every person regardless of race or creed. So does our program include every phase of the ministry of Jesus and it transcends every barrier of geography or class. It is world-wide in its scope.

2. It is cooperative. Here again we are on good Scriptural ground. Very little could be accomplished with each Baptist working alone, but as every person in every church works together every part of our work is furnished with a steady income which must have in order to carry on as it should.

Perhaps it should be stated here that we all need to look further than the program itself and see the agencies that carry it on and the individuals to whom it ministers in the name of our Lord. It is a truism that men do not give their best to principles nor to programs but to persons. Foreign Missions mean a great deal more to us if we happen to have a son who is a missionary. So, if we can see the lost persons, and the sick and suffering persons, and the orphans, and the others whom we are helping, and our missionaries and other workers who minister to them, then the work becomes personal and we support it better.

What are some incentives for supporting this Cooperative Program?

1. The command and the personal example of our Christ. His concern was, and is, always for the lost. His last will and testament we find in the familiar words of the great commission. This ought to be incentive enough for any fair-minded person. But there are others.

2. The present condition of the world. When we realize that on an average there are 19,200,000 Christless graves made every year; in other words, every hour of the day and night 2,191 souls are lost forever, chiefly because we have never reached them with the Gospel, then we begin to understand something of the urgent importance of this work of ours. We should remember, too, that millions of these suffering, disillusioned men and women in our world are now ready to listen to a gospel of salvation as they have not been for a long time.

3. The peculiar position of America. Our nation emerged from the last war as the Number One nation of the world. It now has an opportunity to do the will of God as has been given to few, if any peoples. Whether or not it will move on to grasp its high and God-given opportunity depends in large measure upon what its people are will-

ing to do in support of just this very kind of program. And when we learn that our Association gave last year only 67¢ per member per month to all mission causes, and only 17¢ of that through the Cooperative Program, we wonder if, using ourselves as a standard, America will measure up. It may be that this is God's last great chance for us.

Will we not then look at a lost world through the compassionate eyes of Jesus, seek His forgiveness that our efforts have been so puny compared with our opportunity and ability, and then rededicate our all to Him and His service? Will we not urge our people to tithe, to support all our work through the Cooperative Program, and to pray that we may be willing instruments in the hand of God to work out His will for all the earth?

Respectfully submitted,
C. O. Greene

21. The Sunday School Report was presented and discussed by L. T. Hamrick, Superintendent and adopted by the Association.

REPORT OF THE KINGS MOUNTAIN BAPTIST SUNDAY SCHOOL ASSOCIATION

We, of the Kings Mountain Baptist Association, cannot understand how a church could ever exist without a Sunday School, where all ages, from the cradle throughout life, can receive instruction in the Holy Scriptures. We are told that in 1785 William Fox organized the first society for the teaching of the word of God; and that for a long time the Sabbath school was conducted for children only. History states that the Sunday School movement was born outside of the church, and that it was some time afterwards before it was permitted to become a part of the church program. We have come a long way from those early days of the first Sunday schools, and we are glad that for many decades now the Sunday school program has been a very vital part of the Baptist church.

If one will drive over the territory of the Kings Mountain Association he will see that great progress has been made in the erection of fine church and Sunday school plants during the past 30 years. I doubt if any other Association in the entire South can boast of more beautiful church building than those scattered throughout the rural area of our Association. Furthermore, a study of our records will reveal that our churches and Sunday schools have doubled in membership during the past 30 years. In 1920 our churches had approximately 9,000 members with about 7,000 enrolled in the Sunday school. Our 36 churches then practically were all one room buildings. Now we have 57 churches and a newly organized Sunday school, making a total of 58 Sunday schools in our Association. Eight of these Sunday schools have been organized within the past five years. About 21 of our churches have new, or relatively new, church buildings, and approximately 30 of our rural churches have brick temples of worship.

The Sunday school movement in the Kings Mountain Association continues to grow, but now is no time to rest on the laurels of our ac-

complishments, however gratifying they may seem. There is another side of the picture to view. A further study of our records will reveal that the Sunday school is failing, more and more, to get the church membership in the Sunday school. In 1935 our 42 churches at that time reported to the Association a total of 13,578 members, with a Sunday school enrollment of 11,400 making a difference of 2,178 less enrolled in Sunday school than appeared on the church rolls. In comparison with this, last year, our churches reported a total church membership of 18,076 with a Sunday school enrollment of 13,894, showing 4,182 fewer people enrolled in Sunday school than belonged to our churches. From these figures we see that at least twice as many of our church members are not attending Sunday school now as were 15 years ago—assuming that all members of the Sunday school are church members, which with the many small children many are not. So, there is indeed a great field of prospective Sunday school members already in the church, at least their homes are on the church rolls. Furthermore, I think a study of our Sunday school growth in comparison with our increase in white population in our Association will show that we are not enrolling the people of our Sunday schools and churches in proportion to the increase of our population.

Again looking at the positive side of our work, our churches and Sunday schools have made considerable progress during the past year towards reaching the multitudes of the unenlisted in our midst. Our 19 Sunday School Associational Officers held four regular meetings during the past year with practically every member present each time. One group and three Associational wide Sunday School meetings were conducted. In the meeting held July 3rd at the Buffalo Church, Mr. J. N. Barnette, Secretary of the Sunday School Board, was present and was so impressed with the round table discussion on the growth of our Sunday schools for the past year, that he invited our Sunday school leaders to Ridgecrest during Leadership Week to appear on a Southwide program there; and he proposed to pay \$100.00 on the expenses of a cottage for those who would attend. Several from our Association took part on that program at Ridgecrest, and approximately 100 of our people were present there to hear Mr. Barnette praise the accomplishments of the Kings Mountain Baptist Association.

Then our Sunday School department co-operated with the Kings Mountain Association in sponsoring the state wide Sunday School clinic which was held at the First Baptist Church last January, where there was an average attendance of 840 workers for the entire week. As the result of this clinic some of our Sunday schools were led to put on enlargement campaigns which has resulted in decided growths in membership. The Sunday Schools of our Association report a total enrollment of 15,494 for the closing year as compared with 13,894 for last year, making a net increase over last year of 1,600. 47 Sunday schools conducted Daily Bible Vacation Schools. 4,578 were enrolled in these schools, with an average attendance of 3,886.

Looking forward to next year, an Association planning meeting was held September 16th at Eastside, where literature, aims and helps were

available for use by the churches in conducting their Church Planning Meetings, to set aims and make plans for the work for the coming Sunday school year.

We are indebted to Mr. Ludlum, our Associational Missionary, for his untiring efforts in helping to promote the Sunday school work for the past year. Next year our slogan is "TAKE YOUR FAMILY TO SUNDAY SCHOOL" and I trust that you and the incoming officers will work diligently to make this slogan a reality in the Kings Mountain Association.

Respectfully submitted,
L. T. Hamrick

22. R. B. Carpenter, Pastor of the Casar Baptist Church read the Report on Christian Literature. After a period of discussion, he presented Dr. L. L. Carpenter, Editor of the Biblical Recorder, who spoke to the Report. The Report was adopted by the body.

CHRISTIAN LITERATURE

When we come to think of Christian Literature we mean that type of literature that Christ would approve. Paul told Timothy in I Timothy 4:13 "Till I come give attendance to reading, to exhortation, to doctrine." First in any list of Christian Literature we would place the Holy Bible, and insist that all of us strive to make it a lamp unto our feet and a light unto our path.

Under the sponsorship of the various agencies of our denomination we have religious periodicals covering every phase of our denominational life: The Biblical Recorder, Charity and Children, Home Life, The Commission, Home Missions, Royal Service, Ambassador Life, Baptist Student, and Open Windows are just a few of the sixty periodicals published by our conventions.

The Baptist State Convention of North Carolina, organized in 1830, has as its purpose, according to the constitution, the promotion of "missions, education, social service, and the distribution of the Bible and sound religious literature."

It was not an accident that the Biblical Recorder was founded in 1833. The founding fathers realized that the people did not, and could not, advance beyond the information which they had. Secretary M. A. Huggins says: "A study of the minutes of the convention will show that almost without exception there is a direct relationship between the number of Record subscribers in any church and the support which that church gives to missions, education, and benevolence."

The present circulation of the Recorder is around 43,000. A slight increase in the subscription rate has helped the paper get out of the red financially.

The Recorder has three subscription plans: \$2.50 a year for individual subscriptions; \$2.00 a year in clubs—a minimum of at least 3 subscriptions is required for every church reporting less than 100 members and 5 subscriptions for every church reporting more than 100 members, \$1.00 a year for the Every-Family plan—one subscription for each resident church family is required. At present 300 churches in our

state have the Recorder in every resident family. 783 churches have Recorder Clubs.

There are 14 churches in our Association that have the Every-Family plan and 25 churches have the Club Plan. That leaves 22 churches in our Association without the Biblical Recorder.

We heartily recommend that a Recorder Committee be appointed in every church and that this committee work toward putting the Recorder in the budget and sending it to every resident church family.

Respectfully submitted,
R. B. Carpenter

23. J. R. Cantrell, Chairman of the Resolutions Committee, made a motion: That the Messengers and Visitors express by a standing vote their many thanks for the fine way the Beaver Dam Church entertained the 1949 Session of the Kings Mountain Association. Adopted by standing.

Pastor Smith at this time extended a gracious invitation for the people to come to Dover Church on Friday.

24. E. M. Smith read the Report on Public Morals at this time. After a brief discussion, he asked that the Association by standing vote, show and pay respect to W. P. Biggerstaff for the fine way he lead the County Dry Forces to victory against Wine and Beer in the election last January. It was so done.

R. M. Hauss, Allied Church League Secretary for North Carolina spoke to the Report. The Report adopted.

TEMPERANCE AND PUBLIC MORALS

Public Morals and Temperance are so intermingled that it is impossible to think of one without thinking of the other. Therefore, the major part of this paper will be given to the discussion of the fight against alcoholic beverages in North Carolina.

Realizing the necessity for a more aggressive fight against the organized liquor traffic and for a more adequate program of alcohol education in the State of North Carolina, representatives from thirteen of the leading denominations of the State assembled in Greensboro on March 25, 1943, and organized the Allied Church League. This organization is chartered by the State of North Carolina and was to be financed through appropriations from denomination budgets. The League has become a potent force in the fight for the abolition of beverage alcohol.

Since 1937 the ABC forces have made an intensive effort to increase the Wet territory in North Carolina. Twenty-eight county wide elections have been held, with twenty-five voting against and three voting for ABC stores.

The 1935 Legislature granted the legal sale of beer and wine in each county without a vote of the people. This condition remained until 1947 when the General Assembly reluctantly passed a law permitting counties to vote. Immediately after it's adjournment many counties

circulated petitions to secure a vote. Since March 1, 1948, 35 counties have abolished the legal sale of both beer and wine. 21 counties now have petitions filed with the Boards of Elections and 8 of these have dates set.

In relation to the counties within the bounds of Western North Carolina: 22 counties are totally dry; 11 counties have elections to be held before the end of the year which leaves only eleven counties not voting within the two year period. Three counties have voted in ABC since 1947. One city, Asheville, permits the legal sale of liquor.

The outlawing of alcoholic beverages is tremendously important but simply to do that and then do no more will not solve this problem. The home, the church, the school must all join heart and hands in stopping this stream of distruction.

The evil effects of beverage alcohol need to be constantly kept before our people. Education and information are absolutely necessary. The Allie Church League Publication, "TO-MORROW," is one of the best instruments for this purpose I know about. It should not only be coming into every church home but in every home in the church community if possible.

The Dry Forces of North Carolina are on the march! Plans are being made to hold elections in every county in the state as soon as petitions can be circulated and circumstances will allow.

Let us give our best to drive this terrible evil from our midst.
Respectfully submitted,
Ernest M. Smith

The announcement of the Night Meeting to be held with the Shelby Calvary Church, at 7:00 P.M., by the Moderator. Pastor Suttle gave words of appreciation for the Messengers of the Association and the people of the Beaver Dam community.

The song, "Praise God From Whom All Blessings Flow" was sung. The Association adjourned to meet at Shelby Calvary Church at seven o'clock. The closing prayer was led by Harlan H. Harris of the Shelby First Church.

THE NIGHT SESSION

Held With The Shelby Calvary Church

The Kings Mountain Baptist Association met with the Shelby Calvary Baptist Church in its Night Session, W. T. Furr, Pastor. The song, "Trust and Obey" was sung with Clifford Hughes leading and W. L. McSwain at the piano. Evans Greene, Divisional Training Union leader lead the Devotional by reading Romans 6:1-10. H. B. Alexander gave the prayer. Moderator Suttle called the meeting to order.

25. John A. Hallman, Baptist Training Union Associational Director, presented the report of the years work. Mrs. Smoot Baker, of the Grover First Church, presented a play by a number of the Grover young people. . . . "Can'tites." Organizing an "I Can Band."

At this time the song, "Have Thine Own Way" was sung. Special music was given by New Bethel Church Trio.

Mr. Harvey Gibson, Baptist Training Union State Director, spoke to the Report and gave a fine report of the Training Work. The Report adopted.

BAPTIST TRAINING UNION

Centuries ago when Paul wrote Timothy, "Study to show thyself approved unto God a workman that needeth not to be ashamed; rightly dividing the word of truth," he knew that if this young man developed into the most useful Christian, it would be necessary for him to develop his talent by training and study. It has always been true that the most useful Christians are hardworking, growing Christians.

A disciple is a learner. Therefore, one is not a disciple in the fullest sense of the word unless he is trying to grow. The Baptist Denomination provides the Baptist Training Union to promote growth and efficiency in Christian service. It seems to be a pathetic fact that such a small percentage of professed Christians avail themselves of this opportunity to grow. No Christian is too old nor too young to become a better Christian.

The Baptist Training Union of the Kings Mountain Association has tried to encourage this program of training work in all the churches of the Association. However, there are a number of churches still without active Training Unions. Also, many of the churches that have unions do not put the effort into the work that is necessary to make it rich and meaningful. Nevertheless, it is encouraging to note that Training Union interest has grown considerably during the year. There has been about 16¼ per cent gain in Training Union enrollment during the year. About 36 of the churches have active Training Unions. However, there is only one person enrolled in Training Union for about every 6 church members.

The Associational Organization has held an officers' meeting the first month in each quarter. The Officers and Leaders Council has been held the second month in each quarter. A mass meeting has been held the third month in each quarter, either by groups or otherwise. Also, a Central Training School with help from the state office is planned for the latter part of November.

Our denomination emphasizes World Mission, Gospel Singing, Scripture Reading, Christian Literature, Orphanages, Hospitals, Baptist Doctrines, and Christian Inspiration. The Baptist Training Union is trying to enrich all these phases of our Baptist life. Surely the organization that tries to enrich the whole church program and the whole Christian life is worthy of our best support.

Since this is perhaps the last report that I shall make in this capacity, may I repeat the plea for more of our adult church members to take a greater interest in this important phase of the Lord's work.

Respectfully submitted,

Jno. A. Hallman

26. At this time the congregation standing, the song "Standing on The Promises" was sung. Tom Cornwell, Chairman of the Layman's Committee read the Report of the year's work. Horace Easom spoke to the Report. The Report adopted.

REPORT OF LAYMEN COMMITTEE

Our committee has not been as active this year as in previous years. However, we have been encouraged to see several objectives of our committee being advanced in churches of our Association. Reports from the churches indicate that Laymen have been very loyal and faithful to the work of their church. For one thing more, our churches have supported our Mission Causes this year regularly through the Cooperative Program in more recent years. Second, our Church reports indicate a good increase in number of conversions and baptisms. Third, Church building, including home for pastors and improvement of church grounds have made strides throughout the year for all of these laymen have been in the lead to accomplish these objectives.

The fact that several of our churches have within the past year organized Brotherhoods, indicates a growing interest and devotion on the part of our men. Churches having such organizations now are as follows: Zion, Shelby First, Shelby Second, Beaver Dam, Double Springs and Dover.

Let us continue to go forward on the foundation which has been made and challenge our men to ever greater attainment in the Lord's work.

Respectfully submitted,
Tom Cornwell

27. The following motion was made by Tom Cornwell: That the Laymen's Organization be disbanded and that a Brotherhood be organized in the Association. The motion was passed.

There being no further business, a motion to adjourn was made to meet with the Shelby Dover Baptist Church, Friday Morning, nine o'clock.

Smoot Baker, pastor of the Grover First Baptist Church, led the closing prayer.

SECOND DAY

With Shelby Dover Baptist Church—October 21, 1949

Promptly at nine o'clock, Moderator Suttle called the Association to order. L. C. Pinnix called for the song, "Jesus Paid It All." Mrs. L. C. Pinnix at the piano and Mrs. E. T. Bailey, organist of Shelby Dover Church accompanying.

The Scripture reading and prayer by Talmadge Downs of the Casar Baptist Church, pastor of a church in South Work Association. The Scripture Lesson from John 15:1-14.

The welcome of visitors: Dr. R. C. Campbell welcomed back home. Dr. W. K. McGee from the Baptist Hospital, Winston-Salem, N. C.

Pastor E. M. Smith gave words of welcome to the Messengers and visitors.

28. The Committee to revise the Constitution asked that the matter be considered at this time. A motion was made to adopt the proposed Constitution. (The matter had been presented on the previous day by the committee.) A motion to strike out Article 3 was made and seconded.

After discussion by Messengers, T. W. Fogleman, Jesse Blalock, Smoot Baker, A. M. Kiser, and W. P. Biggerstaff, the question was called for. The vote was taken by standing. 30 for striking out, 48 to retain. The motion lost. The Article 3 remains in the Constitution. Adopted.

REPORT OF THE NOMINATING COMMITTEE

The following are to serve on the Standing Nominating Committee for the coming Associational year.

Rev. L. C. Pinnix, Chairman
Rev. E. B. Hicks
Mr. Osborne Lee
Mrs. A. M. Kiser
Mrs. J. R. Cline

The Committee
E. M. Smith, Chairman
Mrs. John Elliotte
C. E. Elliotte

This action receded by the Association and the Committee asked to revise the Committee in the light of the Constitution.

29. The Orphanage Report—Read by Walter Davis. Supt. Zeno Wall of the North Carolina Baptist Orphanage spoke to the Report. The people of the Kings Mountain Association was glad to hear him. The report adopted.

REPORT OF BAPTIST ORPHANAGE

Since the establishment of our Orphanage on August 5, 1885 thousands of homeless boys and girls have been cared for in our homes. Last year we helped 753 children in Mills Home, Kennedy Home, in foster homes, and helped other needy children in their homes with their mothers. We extended help to 22 more children than we did in 1947 and 93 more than in 1946; thus our work continues to grow and serve the homeless ones within our state.

NEW BUILDINGS

A new cottage—one that is costing over sixty-six thousand dollars—is soon to be opened at Kennedy Home which will enable us to care for plant there, the one at Mills Home having been opened late last fall. 24 more children; and, on February 10th, we opened our new freezer

IMPROVEMENTS

Many of our buildings are old, hence have to be repaired from time to time. But we hope, after this year, that most of our buildings will be in such good shape, after this year, that most of our buildings will be next five years.

OVER SPENT

Last year, because it was necessary to erect some new buildings, and to improve the old ones, and because of the high cost of everything, we spent \$56,000.00 more than we received; and this year, as it appears now, we are going to do the same—spend fifty thousand more than we receive. We have not gone in the “red”—just had to dip into our reserve funds which we had laid aside for a “rainy day,” for such a time as this.

ADEQUATE SUPPORT

If our Orphanage is to continue its outstanding service to the hundreds of homeless ones, who come to us from year to year, a more adequate support must be given. Some of our churches, in putting the Orphanage in their budgets, have not, it seems given a large enough percentage. If our Sunday schools and churches will increase the amounts day schools and churches will continue their once a month offerings, set aside for Orphanage work in their budgets, and if the other Sunday and all will make an inspiring offering at Thanksgiving we will be able to carry on the great work we are doing without sustaining any loss at the end of the year.

AN ORPHANAGE REPRESENTATIVE

We are asking that each association elect an interested Orphanage Representative—one who will urge each church and Sunday school to contribute, regularly, to our Orphanage; that a worthy offering be made at, or near, Thanksgiving, and that copies of **Charity and Children** are received weekly by each church. If this is done, faithfully, the cause of the homeless and dependent children will be more intelligently and adequately supported.

THE CONDITION OF OUR INSTITUTION

Both the outside and the inside of our buildings are being kept up well, the health of our children is excellent, and the spirit of cooperation, among our workers, is as fine as can be found in any institution. And we take so seriously our work that we meet, daily, for Bible reading and prayer, praying for every phase of our work, and for every one who gives to carry it on. We, too, are economizing in every department and are hoping to save several thousand dollars this year. Brethren, pray for us, and do your best for the orphans and homeless ones in our institution.

Respectfully submitted,
Walter Davis

30. The North* Carolina Baptist Hospital Report was presented by L. C. Pinnix. He introduced Dr. W. K. McGee, representative of the Hospital, and he gave a good report of the work. Report adopted.

REPORT OF NORTH CAROLINA BAPTIST HOSPITAL

Teaching and healing, two of the principal precepts of Christ's ministry, are the main objectives of your Baptist Hospital, which, together with the Bowman Gray School of Medicine of Wake Forest College, forms the only Baptist-owned hospital and medical school combined in the world today.

Underlying these objectives is the Christian responsibility of caring for the poor by giving them the medical service they require and by ministering to the sick throughout the State.

Funds received each year in our Mother's Day offerings are used to pay hospital expenses of those patients who can pay only a part of the cost of their hospitalization or nothing at all. Receipts from the churches in Mother's Day offerings in 1948 totaled \$141,150.51. A goal of \$150,000 has been set for 1949. This former figure included the value of linens contributed through Woman's Missionary Union and estimated at \$2,115.09 last year. Approximately half of the 8,800 bed patients admitted to the hospital in 1948 and all those seen in the 36,000 visits made to the outpatient clinics paid no doctor's fee and were assisted by the Mother's Day offering.

Your hospital provided more free service in 1948 than any other denominationally controlled hospital in the South. Free service amounting to \$314,777.17 which was dispensed to patients in the hospital and the out-patient clinics, was made possible by individual contributions, welfare agencies, the Duke Endowment, but mainly through the Mother's Day offering.

The Hospital is the property of North Carolina Baptists and is the concrete expression of their desire to minister to the whole person. A patient's need for pastoral care is increased, rather than lessened, by his physical sickness. To meet this need, the hospital has established a full Department of Religion with a director, a chaplain and a student secretary. Their duties consist of pastoral care of patients, the promotion of a religious program for nurses and medical students, including the teaching of Bible in the School of Nursing, the conducting of a program of Clinical Pastoral Training for pastors and theological students, and ministering to the patients and their families.

The chaplain is on call 24 hours a day at the hospital.

The Department of Religion is a bridge between the hospital and the parent denomination and as such it helps to keep the hospital close to the motives of Christian service on which it was founded.

Free hospitalization for regularly-ordained ministers and missionaries who devote their full time to the ministry is provided through the Outpatient Department. Such persons pay 50 per cent of the cost of

private accommodations if they elect to take private service. A flat 50 per cent discount is given on all work done for actual dependents of pastors and missionaries.

We earnestly commend the work of our Baptist Hospital to the loyal support of the churches of our Association. If any of the churches have not yet made a special offering to help the hospital care for sick persons who cannot bear the cost themselves, we urge them to set a day and take such an offering at an early date. Any church can at any time add to the offering it has already made. Every dollar we send is used to help care for the sick who are not able to pay their own way.

Respectfully submitted,

L. C. Pinnix

The song, "I Love To Tell The Story" was called for.

31. The Report of the American Bible Society was read by W. G. Camp. After discussion by the reader, the report was adopted.

REPORT OF AMERICAN BIBLE SOCIETY

In every missionary advance, the Bible goes forward first!—This principle has been demonstrated throughout the whole course of Christian missions. It is a basic factor in all planning for an Advance Program for worldwide missions.

If the people of the world are to know Christ—the one hope of men and nations—they must have the Bible. It is one primary source of knowledge of Him.

Today—when millions of people around the world are turning to the Bible as never before and when there is a severe shortage of missionaries in many fields—Bible distribution is more than ever a "must." The Bible is the missionary's chief tool. The Bible itself is a missionary. It can go where the human missionary cannot go, stay when he must leave, and keep on working in a man's heart.

Providing the Bible for worldwide mission work is an essential missionary task.

Every man must have the Bible in his own native tongue if the Word of God is to speak to his heart. Someone must translate it into his language, publish it and send it to him, wherever he may live.

In most countries of the world, the income of the people is so low that they cannot afford even the bare cost of the printed Scripture. Someone must help those who can pay only a part of the cost and the many who cannot pay at all.

The American Bible Society, a missionary non-profit organization supported by gifts, serves as that "Someone." It aids in Bible translation, publishes the Scriptures without note or comment, and distributes them, without profit and usually below cost, for use in mission work around the world.

Working in cooperation with the churches and the denominational mission boards, the Society serves every form of Southern Baptist work, at home and abroad.

During 1948 the American Bible Society distributed at home and abroad nearly 10 million volumes of Scriptures; in its World Emergency program, reached a total of nearly 20 million volumes of Scriptures in 3½ years distributed to service men, prisoners of war, displaced persons and civilian populations in Europe and Asia. Provided needed printing machinery, paper and binding materials for producing large quantities of Scriptures in Germany and Japan on a self-help basis.

1949 opportunities call for an Advance Program of Scripture distribution.

In today's "uneasy peace" the heart of all mankind is gripped by fear that we will not be able to control the destructive forces set loose by our own inventive genius. Men are realizing that the Bible presents the only real answer to the needs of men and nations, and are earnestly seeking the Word of God.

But it is a race against time. Today's hungry-hearted eagerness for the Word of God may not last indefinitely; opposing forces are at work.

In 1948, Southern Baptist churches gave \$106,739 to the American Bible Society; total gifts to the Society from churches of all denominations amounted to \$922,192. Increased gifts will be required to provide for urgent needs for missionary advance throughout the world. Please send gifts to your Baptist State Headquarters office, marked "for the American Bible Society."

Respectfully submitted,
W. G. Camp

32. Radio Commission Report—No Report. Ben C. Fisher being absent. W. P. Biggerstaff spoke of the Southern Baptist new Radio Program on the air all the year round.

33. The Report on Relief and Annuity was prepared and sent to the Association by Pastor M. A. Conrad of the Flint Hill Baptist Church and read to the Assembly by the Clerk. Moderator Suttle spoke to the Report. Adopted.

REPORT OF RELIEF ANNUITY

Purpose of the plan is to provide annuities for ministers, church employees who are participating in the plans when they reach retirement age, sixty-five or at any period thereafter, and an annuity to the widows to provide a disability annuity if such occurs prior to the age of sixty-five.

We have experienced a great awakening in our churches in regard to the plan as it is so designed that each church with the pastor, serves during his participation in the plan has a share in providing something for his retirement. This has become the byword in American industry. We believe that Southern Baptists will see that we make adequate provisions for those who have and are faithfully serving them.

Cost—Pastor pays 4% of his salary; Church pays 4% on paid by pastor; State Conventions pays 1% of salary. Paid monthly or quarterly.

RELIEF DEPT. OF ANNUITY BOARD

Total income for 1948 was \$246,332.94; total expenditures amounted to \$237,252.09; this left a balance of \$9,080.85. The amount received from the cooperative program and designated gifts amounted to \$224,498.93, added to this sum \$21,834.01, as interest earnings on relief reserves thus more was expected in the several states than received.

Eighteen hundred are depending on our relief department of the Annuity Board for their livelihood.

This department is financed by special offerings by our churches and individuals.

North Carolina paid in to the relief in 1948, \$20,509.62; received payments to beneficiaries \$21,887.00; excess payments receipts were \$1,377.38. Total Relief Annuity paid out to three hundred beneficiaries in North Carolina in 1948 was \$98,299.97.

We find that of about 49% of the churches and pastors in Kings Mountain Association are participating in the plan. Our urge is that we, the Kings Mountain Association, resolve that by October, 1950, we lay aside adequate funds that our servants will not become victims of charity when they are no longer able to serve. We recall one faithful servant who was not privileged to enter the plan. Yet he has been forgotten by those of whom he served. He is now cared for by his children.

May we purpose in our hearts that this shall not be repeated to the pastors and Christian workers today.

Respectfully submitted,
M. A. Conrad

Visitors—Moderator Tom Lawrence of the Sandy Run Baptist Association, and Professor M. H. Kendall of Mars Hill College. Mr. Kendall gave a report on the work of the College.

On motion that the Clerk be instructed to write beloved Rush Padgett, a retired and disabled minister of the Association, a letter of love and sympathy. The Clerk suggested that a love offering be made for Bro. Padgett. The offering was \$87.21.

The announcement for the noon hour and meal was made by Pastor Smith.

A duet, "The Holy City" was sung by Rev. and Mrs. Pinnix, accompanied at the piano by their son, David.

34. The Doctrinal Sermon was brought by J. L. Jenkins, pastor of the Boiling Springs Baptist Church. Col. 1:12-20. Text—Col. 1:18. Subject, "The Lordship of Christ." Prayer by the Speaker. Recessed for the noon hour.

THE AFTERNOON SESSION, OCTOBER 21, 1949

The Moderator called the meeting at 1:15, fifteen minutes earlier than the program called for.

Song—"On Jordan's Stormy Banks I Stand." The choice song of the Moderator. The congregation sang it with joy for Bro. Suttle.

Scripture and prayer by Pastor H. B. Alexander of Zoar Baptist Church.

35. The first order of the program was World Relief. The Report was read by W. L. McSwain. After discussion of the Report by W. L. McSwain and W. P. Biggerstaff, it was adopted. The Messengers were asked to send offerings of farm products for the "Friendship Train" the week of Nov. 27, for "CROP" for World Relief.

WORLD RELIEF

On January 1, 1948 the Southern Baptist Agency for World Relief began the year with \$147,280.91. Receipts from the states made a total of \$406,913.55. Relief disbursements went to Austria, China, England, Finland, France, Germany, Greece, Holland, Hungary, Italy, Jamaica, Japan, Luxemborg, Near East, North Wales, Poland, Roumania, Venezuela, American Bible Society, American Overseas Aid, Baptist World Alliance, and the Southern Baptist Relief Center. The amount of \$297,329.03 was disbursed, leaving a balance of \$109,584.52 to begin the new year.

The need continues in all of these countries, but our receipts for relief work have drastically fallen off. Because of this decline in receipts the Southern Baptist Relief Center in New Orleans will close on December 15th of this year. To better see this decline in receipts compare the first eight months of 1948 with the same months of 1949. From January to August of 1948 \$184,140.74 was contributed; during the same months of 1949, \$96,387.14 was contributed.

Dr. George W. Sadler, who was director of the Relief Committee of Southern Baptist, is now in Zurich, Switzerland, acting as president of the new seminary which Southern Baptists have recently opened. Both Dr. Sadler and Dr. J. D. Franks, European representative of the Southern Baptist Relief, have reported to the Foreign Mission Board that the need for relief in the European countries is still great, but that perhaps the greatest need now is for money. The plight of displaced persons is the most desperate need at this time and money is greatly needed to get them settled after they get to this country, and relief is needed for the thousands in Europe who have been expelled from their home lands and cannot come to America, or go to any other country. Our Relief Committee has decided that most of the money in the treasury at this time should be used to aid these displaced persons. It has also decided to work with the Relief Committee of the Baptist World Alliance is assisting in the feeding centers which are now being set up in Europe.

Another great agency for Relief is the Cooperative for American Remittances to Europe, better known as CARE. This is a non-profit, government approved agency which assembles standard food and textile packages, transports them overseas, and guarantees their delivery, all at the flat rate of \$10.00 per package, for most of the packages. After 1945 and following hard upon the close of the war cold, disease, and hunger menaced Europe to such an extent that many agencies, 25 in all, were grouped into one great organization. They called it the Cooperative for American Remittances to Europe, and thus CARE was born. The Address is CARE, 20 Broad Street, New York 5, N. Y. You hear its appeals over the Radio and see them in most all magazines.

President Harry S. Truman speaks of this agency: "The government of the United States is continuing to do its best to take care of the urgent needs of millions of people in Europe who must have help in rebuilding their health, as individuals and as nations. But there is much that individuals in this country, blessed with health and resources, can do to supplement the efforts of the Government. Already the Cooperative for American Remittances to Europe—which all of us know far better as CARE—has performed a valiant and humanitarian service in providing leadership through which these individual gifts can be made. Americans, I am sure, will rally to the support of this worthwhile program."

At the end of the war, thousands of Americans were trying to send food and other help to relatives and friends in Europe. But they did not know what to send, or how to send it. Transportation overseas was disrupted, conditions hectic, and many packages were lost or pilfered before reaching their destination. A safe channel for this kind of help was needed and thus the 25 leading relief agencies united for efficiency. It is a non-profit organization and deserves your help.

Cash offerings are greatly needed to buy food, medicine, and to help take care of and locate displaced persons. Such offerings should be sent to the Treasurer of our Foreign Mission Board, Box 5148, Richmond 20, Virginia.

Respectfully submitted,
W. L. McSwain

36. The Church Beautification Report was read by Director Luther McSwain. Luther McSwain and J. W. Suttle discussed the subject. The Report adopted.

REPORT OF BEAUTIFICATION DIRECTOR

The following churches of our Association have done something toward beautifying and improving their grounds and buildings:

Allen Memorial—Completed work on Sunday School rooms and auditorium; laid walk and planted shrubbery and now grading yard.

Beaver Dam—Improvements to auditorium, erected stately church steeple.

Bethany—Erected new auditorium.

New Buffalo—New church building completed, March 3, 1949.

David—Hand rails for the front steps, church bell and tower.

Double Shoals—Completed new building.

Double Springs—New opera chairs for choir, and some painting in the basement.

Flint Hill—Cemetery graded with markers for each grave, grass sown on yard of pastor's home, new carpet in church auditorium.

Grover First—Building painted.

Kings Mountain First—Improvements to shrubbery.

Macedonia—Improvements on building.

Kings Mountain Temple—Improvements to grounds.

Lattimore—Building new brick church.

Buffalo—Lawn sown in grass and shrubbery, refinished building, pews and furniture.

New Prospect—Educational plant finished and auditorium remodelled.

Oak Grove—Educational plant finished and lawn sown in grass.

Plains View—New oak pews, venetian blinds, lighting fixtures, pulpit, furniture.

Pleasant Hill—Improvements to grounds, piano, drinking fountains, gravel on parking lots.

Popular Springs—Gravelling drives in cemetery.

Sandy Plains—New oak pews with carpet over entire auditorium and painting.

Shelby First—Improvements to auditorium, purchased ground for enlargement of building, lots in Kings Road section.

Shelby Eastside—Erected new brick educational plant.

Ross Grove—New cement walks with cement curb around parking area, and lawn sewn in grass. Work incomplete.

Shelby Calvary—New educational plant.

Victory—Church building painted.

Waco—Cemetery sown in grass.

Zoar—New brick pastor's home.

In conclusion let me state that now is the time to make plans to improve grounds and buildings for the coming associational year.

Carpenter Grove—Plans to build new pastor's home.

Kings Mountain Second—Bought a house for a mission Sunday School.

North Brook—Remodeled building for new Sunday School rooms.

Oak View—Built garage, installed carpet, new pulpit furnishings, laid new cement walks, and bought new piano.

Polkville—Finished Sunday School rooms in basement.

Shelby Dover—New office and library building.

Shelby Highland—Bought 3 new lots on Crawford street for new building, starting October 1.

Wallace Grove—Installed electric power unit to supply lights to church building.

Fallston—Church grounds beautified with shrubbery, basement completed and furnished .

Shelby Eastside—New educational building completed and put into use October 2, 1949. Building has 51 class rooms, 4 assembly rooms, pastor's study, church office, 6 rest rooms, 23 closets. It is a 3 story structure of brick, first floor cement, 2nd and 3rd hardwood floors, installed Wurlitzer electric organ and chimes.

Respectfully submitted,
Luther McSwain

37. "Memorials."

The Report on Memorials was read by Rev. J. R. Cantrell. This is a record of our "Beloved Dead" of the Churches during the Associational church year. The record is as follows:



DR. W. A. AYERS

It was in 1943 that Dr. W. A. Ayers came to Shelby from Forest City, North Carolina. He served as pastor of the First Baptist Church, Forest City for about 25 years.

Rev. and Mrs. Ayers came to Shelby to make their home. While here he did supply work in the Churches and was pastor of Shelby Second and Zion Churches. At the time of his death, April 20, 1949, he was pastor of Ross Grove, and Carpenters Grove Baptist Churches. He did a good work and was dearly beloved by the people.

His body was carried to Forest City and planted there beside his daughter's, in the city of the dead.

Mrs. Ayers has gone to Clinton, N. C. to make her home, near her son, who lives there.

In Memoriam

ALLEN MEMORIAL

Mr. W. M. Tessneer

BEAVER DAM

Mrs. J. W. Wilson
Mr. Clyde McSwain

BETHLEHEM

Miss Elizabeth Blalock
Mrs. J. R. Greene
Mrs. J. T. McDaniel
Mrs. W. S. Patterson
Mr. W. B. Elam
Mr. George Barber, Deacon
Mr. L. E. England

BETHANY

No deaths

BOILING SPRINGS

Miss Mary Nell Greene
Mrs. O. N. Hamrick
Mrs. Wiley Hamrick
Mrs. C. C. Pruette
Mr. Hugh F. Hamrick

BUFFALO

Mr. C. E. Phillips

CARPENTERS GROVE

Mrs. A. T. Mull
Mr. Robert Seagle

CASAR

No deaths

COMMUNITY

Mr. R. E. Childers

DAVID

No deaths

DOUBLE SHOALS

No deaths

DOUBLE SPRINGS

Mrs. J. G. Canipe

ELIZABETH

Mrs. P. H. Kendrick
(Charter Member)
Mr. John W. Norman
Mr. Mike B. Borders

FALLSTON

Mrs. A. L. Hoyle

FLINT HILL

Mr. Jonah Harrill
Mr. J. F. Pearson

GROVER FIRST

Mrs. Avalona Carroll
Mr. T. J. Barrett

KINGS MOUNTAIN FIRST

Mrs. D. W. Adams
Mr. R. C. Gold, Deacon

KINGS MOUNTAIN SECOND

Mr. John H. Harris
Mr. W. W. Gladden

KINGS MTN. MACEDONIA

Mrs. M. B. Martin

KINGS MOUNTAIN TEMPLE

No deaths

LATTIMORE

Mrs. Charlie Lovelace
Mr. S. G. Price
Mrs. D. M. Jones

LAWNDALE

Mr. George Martin
Mr. M. M. Southards

LOVE VALLEY

Mr. J. W. Farris, Deacon

MT. SINAI

No deaths

MULLS CHAPEL

No deaths
NEW BETHEL
Mr. Frank Elam

NEW BUFFALO

Mr. Fred Casey

NEW HOPE

Miss Martha Jane Hardin
 Mrs. Julia B. Turner
 Mr. Barney McSwain
 Mr. Wheeler Turner

NEW PROSPECT

Mrs. L. C. Camp
 Mrs. A. G. White
 Mr. J. A. Yarbore

NEW CAMPS CREEK

Mrs. Hattie Cooper

NORMANS GROVE

Miss Hattie Norman
 Mrs. Carmie Willis

NORTH BROOK

No deaths

OAK GROVE

Mrs. John Philbeck
 Mrs. J. N. Lovelace

OAK VIEW

No deaths

PATTERSON GROVE

Mr. J. W. Scism, Deacon

PATTERSON SPRINGS

Mrs. T. P. Camp

PLAIN VIEW

Mr. Hardin Upton
 Mr. Oscar Hamrick

PLEASANT GROVE

Miss Dovie Wright
 Mrs. Pressly Costner
 Mr. Andrew Elliotte
 Mr. E. D. Bridges
 Mr. Bynum Mauney
 Mr. Harold Mills
 Mr. Tom Wright

PLEASANT HILL

Mrs. L. I. Penola Kendrick
 Mrs. Lizzie Bridges
 Mr. John Roberts

PLEASANT RIDGE

Mrs. Coy Blanton
 Mrs. L. V. Maston

POLKVILLE

Mrs. John McCombs

POPLAR SPRINGS

No deaths

ROSS GROVE

Dr. W. A. Ayres, Pastor
 Mr. B. Roy Wilson, Deacon

SANDY PLAINS

Mrs. Grady Crow

Mrs. G. M. Holland
 Mrs. P. A. Whisnant

SHELBY FIRST

Mrs. Etta D. Willis
 Mrs. Joe H. Austell
 Mrs. H. L. Jones
 Mrs. Eula Proctor Hart
 Mrs. S. S. Royster
 Mr. Ray Beam
 Mr. T. P. Eskridge
 Mr. E. E. Holcomb
 Mr. E. E. McKinney
 Mr. J. P. Klugh
 Mr. George P. Webb

SHELBY SECOND

Mr. J. H. Hamrick
 Mr. Carl Hoppes, Jr.
 Mr. T. W. Roberts, Deacon
 Mr. R. W. Weaver
 Mr. R. H. Wilson

SHELBY BETHEL

Mrs. M. A. Settlemyre

SHELBY CALVARY

Mrs. Ben F. Allen
 Mrs. G. W. Matheney
 Mr. John Andrew Bridges
 Mr. Oscar Gilreath

SHELBY DOVER

Miss Frances Bruce

SHELBY EASTSIDE

No deaths

SHELBY HIGHLAND

No deaths

UNION

Miss Jennie Bowers
 Mrs. Bishop Smart
 Mr. Sam Mode
 Mr. W. J. Powell

VICTORY

No deaths

WACO

Mr. A. J. Putnam,
 Chmn. Deacons

WALLACE GROVE

No deaths

ZION

Mrs. Coleman Blanton
 Mr. Weldon Spangler

ZOAR

Mr. Robert Dover

38. Business on Committee Reports:

- (1.) Motion that the Clerk be instructed to prepare the Minutes, records and reports for the Printer and have them distributed to the Churches. Motion adopted.
- (2.) Motion that the Action be recended on Number 6 of the General Board's Report. Adopted. That No. 6 read that "The Introductory Sermon" merge with the Missionary Sermon. And so passed.
- (3.) Places and Preachers—The Committee Chairman, L. C. Pinnix made the following report—Places—First Day, October 19, 1950, Double Springs—Night Session—Grover First. Second Day, October 20, 1950, Double Shoals.

Preachers—Missionary sermon—Rev. C. O. Greene—Doctrinal Sermon—Lawrence Roberts—Inspirational—Rev. G. C. Teague.

Respectfully submitted,
L. C. Pinnix, Chairman
Mrs. L. H. Ledford

The Recommendations were accepted and adopted by the body.

- (4.) The Nominating Committee asked that the action of the Association be recended as to the Standing Nominating Committee, that was appointed for the coming year, because the old Constitution calls for this Committee to be all of Layman. It was accepted and the action Recended. The Committee was instructed to recommend a committee composed of Lay Members.

The Committee made the following report as to those that were to be elected to the Standing Nominating Committee for the Associational year. Chairman—Walter Davis—Zion Church, Mrs. J. R. Cline—Elizabeth Church, Mr. B. Austell—New Hope Church, Mr. Osborne Lee—Shelby Dover Church, Mrs. Forrest Crowder—Double Springs Church. The Committee—E. M. Smith, Mrs. John Elliotte, C. E. Elliotte.

Adopted by the Association.

- (5.) Upon the suggestion of Lewis E. Ludlum and Woodrow Harris, chairman of finances, the following motion was made: That the Churches be required to note the 2% increase for the purpose of purchasing Mission lots, be sent in along with other funds at least each quarter. So adopted.
- (6.) Resolutions of Appreciation—Presented by the Chairman of the Committee, J. R. Cantrell. Approved.

RESOLUTIONS OF APPRECIATION

We, the Committee on Resolutions, representing the Kings Mountain Baptist Association, wish to present the following:

First, we wish to thank the ladies of the Beaver Dam, Calvary, and Dover Baptist Churches for their gracious hospitality offered us. We deeply appreciate all that they have done to make our day with them one of enjoyment.

Second, we wish to thank our most efficient officers and executive committee for their splendid work of the past year.

Third, we wish to express our appreciation to everyone who has taken part on the program.

Fourth, we wish to express our appreciation to Maxwell-Morris and Kennedy for the public address system which made it possible for those who could not get in the Church to hear.

Fifth, we want Mr. Hamrick to know we appreciate the beautiful flowers.

Sixth, the Gardner-Webb Choir left memories that will linger with us.

Seventh, we thank Lutz-Austell for furnishing chairs for the meeting.

Respectfully submitted,
J. R. Cantrell

- (7.) The Chairman of the Standing Nominating Committee made the following nominations and suggestions: The suggestion of the committee was that the Association elect Rev. J. W. Suttle for Moderator for the coming Associational year. Making 38 consecutive years of service and that after he be elected Moderator emeritus. The report accepted and the following were elected to fill the places named, it was voted on as presented and adopted.

I. GENERAL OFFICERS

Moderator	J. W. Suttle
Vice-Moderator	W. P. Biggerstaff
Clerk-Treasurer	Lawrence Roberts
Historian	C. C. Padgett
Chorister	L. C. Pinnix
Pianist	Mrs. L. C. Pinnix
Associational Missionary	Lewis E. Ludlum
Beautification Director	Luther McSwain
Visual Aid Director	L. A. Waters
Biblical Recorder Representative	Bynum E. Weathers
Orphanage Representative	Jack Hullender
Hospital Representative	J. R. Dover

II. ASSOCIATIONAL MISSION COUNCIL

Woodrow W. Harris, Chairman	Mrs. L. P. Williams
Smoot Baker	Sam McAbee
C. C. Crow	A. W. Kincaid
T. W. Fogleman	O. Z. Morgan
Mrs. Allen Herndon	C. O. Greene
W. T. Furr	W. L. McSwain
Lawrence Roberts	Mal Spangler, Jr.
D. Boyd Cannon	

III. SUNDAY SCHOOL OFFICERS

Superintendent	J. R. Howe
Superintendent of Evangelism	Harlan Harris
Supt. of Vacation Bible Schools	H. B. Alexander
Supt. of Enlargement	Wilbur Wilson
Supt. of Training	E. G. Clark
Secretary	Mrs. Roy Propst
Chorister	Clifford Hughes
Pianist	Mrs. E. T. Bailey

IV. BAPTIST TRAINING OFFICERS

Director	Mrs. Smoot Baker
Associate Director	John A. Hallman
Secretary	Howard Hamrick
Pianist	Phyllis Furr
Chorister	J. C. Jolley
Pastor Adviser	E. M. Smith

V. BROTHERHOOD

President	F. O. Champion
Organization to be perfected later.	

VI. BUILDING COMMITTEE FOR HOME OF MISSIONARY

E. B. Hicks, Chairman
John Bell
Mrs. L. C. Pinnix
B. G. Beason
W. T. Furr

VII. THE CENTENNIAL COMMITTEE

W. P. Biggerstaff, Chairman
J. R. Howe
Mrs. Smoot Baker
Mrs. S. O. Kirby
Mrs. W. P. Biggerstaff
F. O. Champion
Dr. Wyan Washburn
C. O. Greene
Dr. R. C. Campbell
G. V. Hawkins

VII. AUDITING COMMITTEE

Sam B. Wilson, Chairman
L. E. Abbott
E. G. Spurling

IX. TRUSTEES

O. M. Mull, Chairman
J. B. Keeter
C. E. Byers

Respectfully submitted,
Woodrow H. Harris, Chairman
R. B. Carpenter
Mrs. L. C. Pinnix
Mrs. Charlotte Swift
Sam McAbee

- (8.) The Program Committee was authorized to use its wisdom as to the number of days for the Centennial Program.
- (9.) The question was asked as to the provision of the New Constitution on the members of the Standing Nominating Committee. The Moderator ruled that we could reconsider a previous action. Thus it was moved that these words be inserted in Section C under division 2 after—a committee on Nominations, "A majority of which shall be laymen." It was so ordered.

The Inspirational Message was delivered by Rev. W. T. Furr, pastor of the Shelby Calvary Baptist Church. His subject: "Safe If Saved." Scripture Lesson read, Eccl. 1:13; I John 3:18; Romans 8:1. The closing prayer was offered by Pastor Furr.

Thus the Kings Mountain Baptist Association adjourned to meet with the Double Springs Baptist Church, Oct. 19, 1950.

J. W. Suttle, Moderator
Lawrence Roberts, Clerk

CHURCH DIRECTORY

For pastors of the Churches, see Table A of the Statistical Tables.
For Sunday School Superintendents, see Table B.
For Baptist Training Union Directors, see Table C.
For Woman's Missionary Union Presidents, see Table D.
For Brotherhood Presidents, see Table E.
For Church Treasurers, see Table F.
For Church Clerks, see Table G.

ASSISTANT PASTORS AND EDUCATIONAL DIRECTORS

NAME AND ADDRESS	CHURCH
Miss Cotherina Jones—Boiling Springs, N. C.	Boiling Springs
Miss Lula Mae Teague—309 E. Kings St., K. Mtn. --	K. Mtn. 1st Church
Mr. J. E. McGinnis, B. 486, Shelby, N. C.	New Buffalo Church
Miss Mable Myers—Rt. 4, Shelby, N. C.	Shelby Dover Church
Mr. J. C. Jolley—304 Cline Pl., Shelby, N. C. --	Shelby Eastside Church

ORDAINED MINISTERS—NOT PASTORS

NAME OF CHURCH	MEMBER OF CHURCH
Bishop, James—K. Mtn., N. C.	K. Mtn. Macedonia
Bishop, Paul—K. Mtn., N. C.	K. Mtn. Macedonia
Blanton, W. A.—223 Morrison St., Shelby, N. C.	Shelby Calvary
Chaneye, P. L.—K. Mtn., N. C.	K. Mtn. Second
Cloninger, J. L.—K. Mtn., N. C.	K. Mtn. Macedonia
Cooke, M. B.—Rt. 2, K. Mtn., N. C.	David
Davidson, W. W.—B. Springs, N. C.	Boiling Springs
Easom, Horace—B. 2, Shelby, N. C.	Shelby First
Elliott, Phil L.—B. Springs, N. C.	Boiling Springs
Falls, J. J.—Rt. 2, K. Mtn., N. C.	David
Fisher, Ben C.—B. Springs, N. C.	Boiling Springs
Franks, R. C.—K. Mtn., N. C.	K. Mtn. Macedonia
Hughes, N. D.—Rt. 2, Shelby, N. C.	Pleasant Hill
Lancaster, R. F.—Rt. 4, Shelby, N. C.	Shelby Dover
Morrisette, Stephen—B. Springs, N. C.	Boiling Springs
Padgett, Rush—Grover, N. C.	Sandy Plains
Philbeck, J. A.—Rt. 1, Shelby, N. C.	New Camps Creek
Reece, Thomas—B. Springs, N. C.	Boiling Springs
Redmond, W. H.—K. Mtn., N. C.	K. Mtn. Second
Teague, J. L.—K. Mtn., N. C.	K. Mtn. First
Tedder, D. A.—504 E. Suttle St., Shelby, N. C.	Shelby First
Waldrop, H. E.—409 N. Wash., Shelby, N. C.	Shelby First
Whitaker, L. R.—Rt. 1, Shelby, N. C.	Mulls Chapel

MINISTERS ORDAINED THIS YEAR

H. B. Alexander, Rt. 3, Shelby, N. C.	Shelby Eastside
--	-----------------

MINISTERS LICENSED THIS YEAR

NAME AND ADDRESS	CHURCH
Paul Allen—Rt. 1, Grover, N. C.	Allen Memorial
H. B. Alexander—Rt. 3, Shelby, N. C.	Shelby Eastside
John L. Allen—Boiling Springs, N. C.	Shelby Calvary
Hubert Hamrick—Rt. 5, Shelby, N. C.	Union
Guy Hutchins—Cowpens, S. C.	Flint Hill
Everette Osborne—Rt. 3, K. Mtn., N. C.	New Camps Creek
Robert Patterson—K. Mtn., N. C.	K. Mtn. First
C. D. Sailors—311 Gardner St., Shelby, N. C.	Shelby Bethel
C. H. Turner—Grover, N. C.	Grover First

STUDENTS FOR THE MINISTRY

NAME	ADDRESS	COLLEGE	CHURCH
Allen, Paul E.	Rt. 1, Grover	Gardner-Webb	Allen Memorial
Allen, John L.	Boiling Springs	Gardner-Webb	Shelby Calvary
Bridges, J. J.	Gaffney, S. C.	Limestone	New Hope
Chapman, J. R.	Boiling Springs	Carson-Newman	Boiling Springs
Conrad, M. A.	Rt. 2, Shelby	Gardner-Webb	Flint Hill
Crowe, Calvin	Boiling Springs	N. Y. B. Institute	Boiling Springs
Cook, Howard	Shelby	Gardner-Webb	Shelby Bethel
Fulbright, Chas.	Boiling Springs	Gardner-Webb	Boiling Springs
Gibson, E. W.	Lattimore	Gardner-Webb	Pleasant Ridge
Falls, Jack	Rt. 4, Shelby	Wake Forest	Double Springs
Hamrick, Audley	Boiling Springs	Carson-Newman	Boiling Springs
Hamrick, Hubert	Rt. 5, Shelby	Gardner-Webb	Union
Hamrick C. R.	Boiling Springs	Louisville Semin.	Boiling Springs
Hawkins, Yuell	Boiling Springs	Gardner-Webb	Boiling Springs
Holly H. H.	Boiling Springs	Gardner-Webb	Boiling Springs
Howe, Guinn	Shelby	Gardner-Webb	Shelby Bethel
Hiatt, John	Boiling Springs	Gardner-Webb	Boiling Springs
Hutchins, Guy	Rt. 2, Shelby	Limestone	Flint Hill
Jenkins, Clifford	Boiling Springs	Wake Forest	Boiling Springs
Lineberger, H.	Boiling Springs	Gardner-Webb	Boiling Springs
Lineberger, M.	Boiling Springs	Gardner-Webb	Boiling Springs
Long, Robert	Boiling Springs	Gardner-Webb	Boiling Springs
Lynn, Lyndal	Boiling Springs	Gardner-Webb	Boiling Springs
Mahon, Julius	Boiling Springs	Gardner-Webb	Boiling Springs
Morgan, Rufus	Boiling Springs	Gardner-Webb	Boiling Springs
Moss, Zeb	Boiling Springs	Gardner-Webb	Boiling Springs
Propst, Albert	Rt. 4, Shelby	Wake Forest	Shelby First
Patterson, Robt.	Kings Mountain	Gardner-Webb	Kings Mtn. First
Roberts, Joe	Shelby	Gardner-Webb	Shelby First
Whitaker, Bruce	Rt. 4, Shelby	Louisville Semin.	Sandy Plains

CHURCH LIBRARIANS

NAME	ADDRESS	CHURCH
Mrs. Fred Jones	Rt. 4, Shelby	Beaver Dam
Mrs. Alma McGinnis	Rt. 2, Kings Mountain	Bethlehem
Mrs. Boyd Warlick	Rt. 1, Belwood	Carpenters Grove
Miss Mary Nolan	Casar	Casar
Miss Doris Stroup	Rt. 2, Kings Mountain	David
Mrs. Forrest Bowen	Rt. 1, Lawndale	Double Shoals
Mrs. Fred Washburn	Rt. 4, Shelby	Double Springs
Miss Helen Henderson	Rt. 1, Shelby	Elizabeth
Mrs. Stough Beam	Fallston	Fallston
Mrs. Cleary Hamrick	Rt. 3, Shelby	Flint Hill
Miss Sybil Byers	Grover	Grover First
Mr. J. C. Gladden	Rt. 1, Kings Mountain	Kings Mountain Second
Mrs. C. B. Bobbitt	Box 232, Kings Mountain	Kings Mtn. Macedonia
Miss M. A. Lattimore	Lattimore	Lattimore

Mrs. L. T. Noggles—Box 231, Lawndale	-----	New Bethel
Miss Leola Bettis—Earl	-----	New Hope
Mrs. John Boggs—Rt. 2, Lawndale	-----	Normans Grove
Mrs. E. O. Gore—Rt. 1, Kings Mountain	-----	Oak View
Mrs. J. D. Ellis—Rt. 1, Grover	-----	Patterson Springs
Miss Velma Hamrick—Rt. 5, Shelby	-----	Pleasant Grove
Mrs. Edward Rollins—Rt. 2, Shelby	-----	Pleasant Hill
Miss Lorene Hamrick—619 E. Marion, Shelby	-----	Ross Grove
Miss Joice Whitaker—Rt. 4, Shelby	-----	Sandy Plains
Miss Rachel Smith—313 S. DeKalb, Shelby	-----	Shelby First
Miss Ester J. Lewis—Blanton St., Shelby	-----	Shelby Calvary
Mrs. C. W. Smith—Dover Mill, Shelby	-----	Shelby Dover
Mrs. E. H. Moss—Waco	-----	Waco
Mrs. Hoyle Cornwell—Rt. 5, Shelby	-----	Zion
Miss Gertrude Roberts—Rt. 3, Shelby	-----	Zoar

CHOIR DIRECTORS

NAME	ADDRESS	CHURCH
Mr. Garland Jones—Rt. 1, Grover	-----	Allen Memorial
Mr. Schieman McSwain—Rt. 4, Shelby	-----	Beaver Dam
Mr. Max Blackburn—Rt. 2, Kings Mountain	-----	Bethlehem
Mr. W. D. Childers—Grover	-----	Bethany
Miss Margaret Fales—Boiling Springs	-----	Boiling Springs
Mr. Harrill Bridges—Rt. 1, Shelby	-----	Buffalo
Miss Sara Cooke—Rt. 3, Lawndale	-----	Carpenters Grove
Mr. Brady Warlick—Rt. 1, Lawndale	-----	Casar
Mrs. Will Daves—Box 93, Cherryville	-----	Community
Mr. I. J. Falls—Box 375, Kings Mountain	-----	David
Miss Evelyn Harrill—Rt. 1, Lawndale	-----	Double Shoals
Mr. H. O. Bridges—Rt. 4, Shelby	-----	Double Springs
Mr. E. L. Beam—Rt. 2, Shelby	-----	Elizabeth
Mr. W. A. Hoyle—Fallston	-----	Fallston
Mr. Fred Ledbetter—Rt. 2, Shelby	-----	Flint Hill
Mr. C. E. Byers—Grover	-----	Grover First
Miss Lula Mae Teague—309 Kings St., Kings Mtn.	-----	K. Mtn. First
Mr. J. C. Gladden—Rt. 1, Kings Mtn.	-----	K. Mtn. Second
Mr. Obrean White—Kings Mtn.	-----	K. Mtn. Macedonia
Mr. Oran White—Kings Mtn.	-----	K. Mtn. Temple
Mr. Tom Lattimore—Lattimore	-----	Lattimore
Mr. T. T. Smawley—Lawndale	-----	Lawndale
Mr. Jesse Redding—Rt. 1, Gastonia	-----	Love Valley
Mr. Ernest McGannis—Rt. 2, Shelby	-----	Mt. Sinai
Mr. Woodrow Bowans—Rt. 5, Shelby	-----	Mulls Chapel
Mr. Banks Miller—Lawndale	-----	New Bethel
Mr. Harold Smith—Rt. 1, Grover	-----	New Buffalo
Mrs. L. H. Gibson—Rt. 2, Shelby	-----	New Hope
Mr. Willie Wright—Rt. 1, Shelby	-----	New Prospect
Mr. H. H. Hoskins—Rt. 2, Shelby	-----	New Camps Creek
Miss Muriel Norman—Belwood	-----	Normans Grove

Mr. Robert Adams—Rt. 1, Cherryville	North Brook
Mr. J. S. Ware—Rt. 3, Kings Mountain	Oak Grove
Mr. J. H. Callwell—Rt. 2, Kings Mountain	Oak View
Mr. Forest Hord—Rt. 1, Kings Mountain	Patterson Grove
Mrs. Mozell McSwain—Patterson Springs	Patterson Springs
Mr. Ben Upton—Rt. 1, Belwood	Plains View
Mr. Carl McSwain—Rt. 5, Shelby	Pleasant Grove
Mr. Marvin Stroup—Rt. 1, Grover	Pleasant Hill
Mr. Sherman Weaver—Rt. 5, Shelby	Pleasant Ridge
Mr. J. D. Huggins—Polkville	Polkville
Mr. John B. Hamrick—Rt. 3, Shelby	Poplar Springs
Miss Mary C. Jones—Rt. 3, Shelby	Putnam Memorial
Mr. Eura Blanton—Fallston Rd., Shelby	Ross Grove
Miss Norene Price—Rt. 1, Ellenboro	Sandy Plains
Mr. Joe D. Hamrick—917 N. LaFayette, Shelby	Shelby First
Mrs. Mary H. Dellinger—705 N. Morgan St., Shelby	Shelby Second
Mr. Yates Pearson—Earl Rd., Shelby	Shelby Bethel
Mr. Marvin Dixon—Rt. 2, Shelby	Shelby Calvary
Mrs. E. T. Bailey—Rt. 4, Shelby	Shelby Dover
Mr. J. C. Jolley—204 Cline Place, Shelby	Shelby Eastside
Mr. J. A. Newton—410 Crawford St., Shelby	Shelby Highland
Mr. Hubert Hamrick—Rt. 5, Shelby	Union
Mr. J. D. Martin—Rt. 2, Kings Mountain	Victory
Mrs. J. A. Clay—Waco	Waco
Mr. Will McSwain—Rt. 1, Shelby	Wallace Grove
Mrs. Bill Horn—Rt. 5, Shelby	Zion
Mr. Everette Hollifield—Rt. 3, Shelby	Zoar

PIANIST OR ORGANIST

NAME	ADDRESS	CHURCH
Miss Joan McSwain—Rt. 2, Kings Mountain	-----	Allen Memorial
Miss Joe McSwain—Rt. 3, Shelby	-----	Beaver Dam
Miss Juanita Warren—Rt. 2, Kings Mountain	-----	Bethlehem
Miss Margaret Earl—Grover	-----	Bethany
Miss Margaret Fales—Boiling Springs	-----	Boiling Springs
Miss Joice Porter—Rt. 1, Shelby	-----	Buffalo
Mrs. S. T. Carpenter—Rt. 1, Belwood	-----	Carpenters Grove
Miss Ruth Brittain—Casar	-----	Casar
Miss Noma Marrow—Box 93, Cherryville	-----	Community
Miss Sarah Whisnant—Rt. 2, Kings Mountain	-----	David
Miss Faye Wilson—Rt. 5, Shelby	-----	Double Shoals
Miss Evelyn Washburn—Rt. 4, Shelby	-----	Double Springs
Mrs. Nannie Whisnant—Rt. 2, Shelby	-----	Elizabeth
Mrs. J. A. Holton—Fallston	-----	Fallston
Miss Alberta Hamrick—Rt. 3, Shelby	-----	Flint Hill
Mrs. Gilmore Byers—Grover	-----	Grover First
Miss Lula Mae Teague—903 Kings St., Kings Mountain	--	K. Mtn. First
Mrs. Arvaree England—Box 383, Kings Mtn.	-----	Kings Mtn. Second
Miss Mae Snead—Kings Mtn.	-----	Kings Mtn. Macedonia

Mrs. A. A. Jolley—216 Walker St., K. Mtn.	K. Mtn. Temple
Miss Margaret Lattimore—Lattimore	Lattimore
Miss Ernestine Bridges—Lawndale	Lawndale
Mrs. E. M. Redding—Rt. 2, Gastonia	Love Valley
Miss Joelena Bridges—Rt. 2, Shelby	Mt. Sinai
Miss Patsy Wright—Rt. 5, Shelby	Mulls Chapel
Mrs. Frank Cline—Lawndale	New Bethel
Miss Faye Hardin—Rt. 1, Grover	New Buffalo
Mrs. R. L. Nichols—Earl	New Hope
Miss Nell Hord—Rt. 2, Cherryville	New Prospect
Mrs. Sam McNeely—Rt. 3, Cherryville	New Camps Creek
Miss Margaret Warlick—Belwood	Normans Grove
Mrs. Roscoe Wright—Rt. 2, Lawndale	North Brook
Mrs. W. A. Wright—Rt. 3, Kings Mountain	Oak Grove
Miss Betty Lou Well—Rt. 1, Kings Mountain	Oak View
Mrs. Forrest Hord—Rt. 1, Kings Mountain	Patterson Grove
Mrs. George B. Blanton—Rt. 2, Shelby	Patterson Springs
Mrs. John Angle—Rt. 1, Cherryville	Plains View
Miss Lunez Spangler—Rt. 5, Shelby	Pleasant Grove
Mrs. Therman Martin—Rt. 1, Grover	Pleasant Hill
Mrs. Lallage McSwain—Star Rt., Lattimore	Pleasant Ridge
Mrs. J. D. Huggins—Polkville	Polkville
Miss Lena Hamrick—Rt. 3, Shelby	Poplar Springs
Miss Carolyn McSwain—Rt. 3, Shelby	Putnam Memorial
Miss Ola Johnson—212 W. Sumter St., Shelby	Ross Grove
Miss Betty Whitaker—Rt. 4, Shelby	Sandy Plains
Mrs. H. S. Plaster—525 S. Washington, Shelby	Shelby First
Mrs. Mary H. Dellinger—705 N. Morgan St., Shelby	Shelby Second
Miss Jerleen Waters—Kings Rd., Shelby	Shelby Bethel
Miss Myrl Farris—618 Gardner St., Shelby	Shelby Calvary
Mrs. E. T. Bailey—Rt. 4, Shelby	Shelby Dover
Mrs. Dean Whisnant—1100 Toms St., Shelby	Shelby Eastside
Mrs. Griffin Gold—Logan St., Shelby	Shelby Highland
Mrs. A. V. Heafner—Rt. 1, Lawndale	Union
Mrs. Willey Sullins—Rt. 1, Grover	Victory
Mrs. J. A. Clay—Waco	Waco
Mrs. N. S. Carter—Rt. 1, Shelby	Wallace Grove
Mrs. W. P. Biggerstaff—Rt. 5, Shelby	Zion
Mrs. Clyde Putnam—Rt. 3, Shelby	Zoar

HISTORICAL DATA

Date	Place of Meeting	Intro. Sermon	Moderator	Clerk
1851	Double Springs	D. Pannell	T. Dixon	J. R. Logan
1852	New Bethel	J. Suttle	T. Dixon	J. R. Logan
1853	Boiling Springs	G. W. Rollins	D. Pannell	J. R. Logan
1854	Mt. Sinai	D. Pannell	D. Pannell	J. R. Logan
1855	Zion	G. W. Rollins	D. Pannell	J. R. Logan
1856	New Prospect	T. Dixon	T. Dixon	J. R. Logan
1857	Big Springs	G. W. Rollins	G. W. Rollins	J. R. Logan
1858	Olivet	J. Suttle	G. W. Rollins	J. W. Green
1859	Pleasant Hill	G. W. Rollins	L. M. Berry	J. R. Logan
1860	High Shoals	L. M. Berry	L. M. Berry	J. R. Logan
1861	Lincolnton	R. P. Logan	L. M. Berry	J. R. Logan
1862	New Bethel	L. M. Berry	G. W. Rollins	J. R. Logan
1863	Sandy Run	G. W. Rollins	G. W. Rollins	J. R. Logan
1864	Bethel, Iredell Co.	L. M. Berry	R. P. Logan	J. R. Logan
1865	Zoar	G. W. Rollins	R. P. Logan	J. R. Logan
1866	Concord	P. F. Elam	R. Poston	J. R. Logan
1867	Thesalonica	J. H. Yarboro	J. H. Yarboro	G. M. Webb
1868	Mt. Paran	G. M. Webb	J. H. Yarboro	G. M. Webb
1869	Double Springs	G. W. Rollins	G. W. Rollins	G. M. Webb
1870	High Shoals	R. P. Logan	G. W. Rollins	G. M. Webb
1871	Bethel, Iredell Co.	G. M. Webb	T. Dixon	G. M. Webb
1872	Bethlehem	Wade Hill	T. Dixon	G. M. Webb
1873	Zion	G. W. Rollins	G. W. Rollins	B. H. Bridges
1874	Sandy Run	Wade Hill	G. W. Rollins	L. M. Logan
1875	New Hope	T. Dixon	T. Dixon	L. M. Logan
1876	Sandy Plains	G. W. Rollins	T. Dixon	L. M. Logan
1877	Pleasant Hill	J. H. Yarboro	G. W. Rollins	B. H. Bridges
1878	Boiling Springs	A. C. Irvin	T. Dixon	B. H. Bridges
1879	New Prospect	H. Hatcher	A. L. Stough	L. M. Logan
1880	Double Springs	P. R. Elam	T. Dixon	L. M. Logan
1881	Buffalo	W. A. Nelson	T. Dixon	L. M. Logan
1882	Bethel, Iredell Co.	A. L. Stough	J. Y. Hamrick	L. M. Logan
1883	Pleasant Grove	G. P. Hamrick	J. Y. Hamrick	L. M. Logan
1884	Big Springs	A. C. Irvin	H. F. Schenck	L. M. Logan
1885	Grover	B. W. Busey	H. F. Schenck	D. S. Lovelace
1886	Beaver Dam	G. M. Webb	H. F. Schenck	D. S. Lovelace
1887	New Bethel	I. D. Hufham	H. F. Schenck	D. S. Lovelace
1888	High Shoals	J. M. McHanaway	H. F. Schenck	D. S. Lovelace
1889	Elizabeth	G. P. Hamrick	H. F. Schenck	D. S. Lovelace
1889	Zion	J. A. Speight	H. F. Schenck	D. S. Lovelace
1891	Waco	F. C. Hickson	H. F. Schenck	D. S. Lovelace
1892	Gastonia	G. P. Hamrick	H. F. Schenck	D. S. Lovelace
1893	Boiling Springs	J. L. Sproles	H. F. Schenck	D. S. Lovelace
1894	Shelby	A. C. Irvin	H. F. Schenck	D. S. Lovelace
1895	Bethlehem	J. D. Hufham	H. F. Schenck	D. S. Lovelace
1896	Lattimore	G. P. Hamrick	H. F. Schenck	D. S. Lovelace
1897	New Hope	A. C. Irvin	E. Y. Webb	D. S. Lovelace
1898	Sandy Plains	T. Dixon	E. Y. Webb	D. S. Lovelace
1899	New Prospect	G. M. Webb	E. Y. Webb	D. S. Lovelace
1900	Double Springs	R. L. Hamrick	E. Y. Webb	D. S. Lovelace
1901	Cherryville	T. Dixon	E. Y. Webb	D. S. Lovelace
1902	Pleasant Grove	R. N. Rawkins	H. F. Schenck	D. S. Lovelace
1903	Pleasant Hill	R. F. Treadway	A. C. Irvin	D. S. Lovelace
1904	Zoar	D. F. Putnam	A. C. Irvin	D. S. Lovelace
1905	Kings Mountain	J. S. Farmer	A. C. Irvin	D. S. Lovelace
1906	Beaver Dam	A. H. Sims	A. C. Irvin	D. S. Lovelace
1907	Bessemer City	M. E. Parish	A. C. Irvin	D. S. Lovelace
1908	New Bethel	D. G. Washburn	A. C. Irvin	D. S. Lovelace
1909	Boiling Springs	J. J. Beach	A. C. Irvin	D. S. Lovelace
1910	Grover	C. A. Jenkins	A. C. Irvin	D. S. Lovelace
1911	Elizabeth	J. M. Hamrick	J. W. Suttle	D. S. Lovelace
1912	Mt. Zion	Wade Bostic	A. C. Irvin	D. S. Lovelace
1913	Zion	L. W. Swope	J. W. Suttle	J. J. Lattimore
1914	Popular Springs	J. R. Miller	J. W. Suttle	J. J. Lattimore
1915	New Hope	T. C. Holland	J. W. Suttle	J. J. Lattimore
1916	Waco	W. E. Lowe	J. W. Suttle	J. J. Lattimore
1917	Fallston	D. G. Washburn	J. W. Suttle	J. J. Lattimore
1918	Union	D. F. Putnam	J. W. Suttle	J. J. Lattimore
1919	Sandy Plains	W. R. Beach	J. W. Suttle	J. J. Lattimore
1920	Ross Grove	J. M. Kester	J. W. Suttle	J. J. Lattimore
1921	Bethlehem	W. G. Camp	J. W. Suttle	J. J. Lattimore
1922	Casar	W. A. Elam	J. W. Suttle	G. G. Page
1923	Lattimore	J. R. Green	J. W. Suttle	G. G. Page
1924	Double Springs	R. L. Lemmons	J. W. Suttle	G. G. Page
1925	Shelby 1st	Rush Padgett	J. W. Suttle	G. G. Page
1926	Kings Mtn. 1st	G. P. Abernethy	J. W. Suttle	G. G. Page
1927	Double Shoals	Zeno Wall	J. W. Suttle	G. G. Page

HISTORICAL DATA (Continued)

Date	Place of Meeting	Intro. Sermon	Moderator	Clerk
1928	Beaver Dam	J. L. Jenkins	J. W. Suttle	G. G. Page
1929	Boiling Springs	C. J. Black	J. W. Suttle	G. G. Page
1930	Patterson Springs	Wallace Hartsell	J. W. Suttle	J. V. DeVenney
1931	Zion	L. L. Jessup	J. W. Suttle	J. V. DeVenney
1932	New Bethel	D. F. Putnam	J. W. Suttle	J. V. DeVenney
1933	Patterson Grove	T. L. Justice	J. W. Suttle	J. V. DeVenney
1934	New Prospect	Zeno Wall	J. W. Suttle	J. V. DeVenney
1935	Poplar Springs	A. G. Sargeant	J. W. Suttle	J. V. DeVenney
1936	Pleasant Grove	W. G. Camp	J. W. Suttle	J. V. DeVenney
1937	Bethlehem	C. V. Martin	J. W. Suttle	J. V. DeVenney
1938	Sandy Plains	J. L. Jenkins	J. W. Suttle	J. V. DeVenney
1939	Pleasant Hill	W. A. Hoffman	J. W. Suttle	J. W. Costner
1940	Carpenter's Grove	W. A. Elam	J. W. Suttle	J. W. Costner
1941	Elizabeth	A. M. Kiser	J. W. Suttle	J. W. Costner
1942	New Hope	W. P. Biggerstaff	J. W. Suttle	J. W. Costner
1943	Shelby 1st, and Double Springs	D. F. Putnam	J. W. Suttle	J. W. Costner
1944	Boiling Springs and Flint Hill	W. A. Ayers	J. W. Suttle	J. W. Costner
1945	Fallston and Waco	Zeno Wall	J. W. Suttle	J. W. Costner
1946	Union and Patterson Grove	C. C. Crow	J. W. Suttle	Lawrence Roberts
1947	Ross Grove and New Bethel	W. W. Harris	J. W. Suttle	Lawrence Roberts
1948	Casar and Shelby Dover, Night Shelby Second	D. Boyd Cannon	J. W. Suttle	Lawrence Roberts
1949	Beaver Dam Shelby Calvary, Night Shelby Dover	Jesse Blalock	J. W. Suttle	Lawrence Roberts

Treasurer—1851-1875—None; 1877—B. H. Bridges; 1878-1883—None;
 1884-1897—T. D. Lattimore; 1898-1899—J. F. Williams; 1900-1903—T. K.
 Barnett; 1905-1913—H. D. Wilson; 1914-1933—George Blanton; 1933—
 Officers of Clerk and Treasurer were consolidated.



Statistical Tables

TABLE A — CHURCH AND MEMBERSHIP

CHURCHES	Location OC-V-T-C	Date Organized	Dates of Meeting	PASTORS AND ADDRESSES	Baptisms	Letters and Other Additions	LOSSES			TOTAL	SPECIAL INFORMATION			
							Loss by Death, Transfer, etc.	Total Resident Members	Total Non- resident Members		Grand Total Present Members	Revival Meetings Held	Number Tithers	State Paper in Budget
1 Allen Memorial		1946	2-4	W. L. McSwain, R. 2, Kings Mtn.	15	17	1	85	5	90	3	26	00	00
2 Beaver Dam	OC	1853	1-3	J. W. Suttle, 708 W. Marion, Shelby	32	5	2	353	154	507	2	10	00	00
3 Bethlehem	OC	1842	2-4	T. W. Fogleman, 108 Fulton, Kings Mtn.	15	7	32	349	125	474	2	20	00	00
4 Bethany	OC	1947	All	Paul B. Dobbins, R. 5, Gaffney, S. C.	21	16	2	106		106	1	38	00	00
5 Boiling Springs	T	1847	All	J. L. Jenkins, Boiling Springs	19	89	74	660	164	824	1	95	00	00
6 Buffalo	V	1902	All	Otis Muil, R. 3, Vale	15	19	17	168	27	195	1	17	00	00
7 Carpenters Grove	OC	1887	1-3		2	2	2	117	60	177	1	11	00	00
8 Casar	V	1894	2-4	R. B. Carpenter, Belwood	12	6	8	157	22	179	3	14	00	00
9 Community	OC	1945	All	Roy Walker, B. 393, Cherryville	18	15	1	80	6	86	2	8	00	00
10 David	OC	1938	1-3	W. L. McSwain, R. 2, Kings Mtn.	9	14	8	140	37	177	3	31	00	00
11 Double Shoals	V	1898	1-3	C. O. Greene, Lawndale	9	7	2	154	33	187	1	4	00	00
12 Double Springs	OC	1844	2-4	J. W. Suttle, 708 W. Marion, Shelby	9	7	29	386	71	457	2	10	00	00
13 Elizabeth	OC	1883	All	D. Boyd Cannon, R. 3, Shelby	8	25	31	421	72	493	2	54	00	00
14 Fallston	V	1902	2-4-5	Lawrence Roberts, R. 5, Shelby	4	11	7	176	52	228	2	16	00	00
15 Flint Hill	OC	1909	All	M. A. Conrad, R. 2, Shelby	31	14	8	274	63	337	2	75	00	00
16 Grover First	V	1880	All	Smoot Baker, Grover	9	22	18	325	86	411	2	40	00	00
17 Kings Mtn., First	C	1890	All	L. C. Finnix, 120 Gaston, Kings Mtn.	28	29	32	563	72	635	1	125	00	00
18 Kings Mtn., Second	C	1915	All	B. F. Austin, 601 Piedmont, Kings Mtn.	48	19	8	541	1	542	2	75	00	00
19 Kings Mtn., Macedonia	V	1920	All	C. B. Bobbitt, Kings Mtn.	16	13	6	208	60	268	2	54	00	00
20 Kings Mtn., Temple	C	1945	All	W. F. Monroe, Waco Rd., Kings Mtn.	25	19	4	162	14	176	1	45	00	00
21 Lattimore	V	1891	1-3	J. R. Cantrell, Boiling Springs	12	13	20	290	12	302	1	13	00	00
22 Lawndale	T	1890	2-4	C. O. Greene, Lawndale	2	7	3	135	32	167	1	8	00	00
23 Love Valley	OC	1942	All	Earl M. Redding, R. 2, Gastonia	1	1	2	18	8	26	1	4	00	00
24 Mt. Sinai	OC	1851	2-4	C. C. Crow, Shelby	16	7	14	142	86	228	2	29	00	00
25 Mulls Chapel	OC	1923	2-4	E. L. McDaniel, R. 1, Ellenboro	6	3	9	149	12	161	2	3	00	00
26 New Bethel	OC	1848	2-4	C. O. Greene, Lawndale	13	6	6	168	62	230	1	12	00	00
27 New Buffalo	OC	1943	1-3-5	N. S. Hardin, R. 4, Shelby	15	6	6	97	10	107	2	19	00	00

28	New Hope	V	1873	2-4	Hugh F. Harrill, R. 4, Shelby	14	✓	✓	✓	18	17	283	20	303	2	5	5	✓	✓
29	New Prospect	OC	1854	2-4	A. M. Kiser, Waco	9				3	10	194	30	294	1	6			
30	New Camps Creek	OC	1945	1-3	L. E. Sailors, R. 1, Mooresboro	8				14	23	48	14	62	2	1			
31	Normans Grove	OC	1913	2-4	John A. Hallman, R. 1, Vale	13				6	4	145	15	160	3	6			
32	North Brook	OC	1913	All	Coy H. Dellinger, Crouse	6				14	10	185	20	205	1	20			
33	Oak Grove	OC	1897	1-3	C. C. Crow, Shelby	19				16	16	320	57	377	2	15	**		
34	Oak View	OC	1938	All	E. O. Gore, R. 1, Kings Mtn.	3				10	7	84	47	131	2	35	**		
35	Patterson Grove	OC	1884	1-3	G. C. Teague, R. 5, Shelby	35				7	20	211	48	259	2	8	**		
36	Patterson Springs	V	1895	2-4	Jesse Blalock, R. 4, Shelby	18				5	14	185	107	292	2	12	**		
37	Plains View	OC	1947	1-3-5	Thomas D. Taylor, R. 2, Lawndale	10				13	7	101		101	2	3			
38	Pleasant Grove	OC	1878	2-4	A. M. Kiser, Waco	21				19	8	282	98	380	2	15	**		
39	Pleasant Hill	OC	1851	1-3	Lawrence Roberts, R. 5, Shelby	13				4	9	233	95	328	3	25	**		
40	Pleasant Ridge	OC	1915	2-4	W. G. Camp, Mooresboro	39				21	5	295	63	358	3	12	**		
41	Polkville	V	1940	2-4	W. P. Biggerstaff, R. 5, Shelby	11				5	12	174	18	192	3	6			
42	Poplar Springs	OC	1898	1-3	J. R. Cantrell, Boiling Springs	17				18	25	260	111	371	2	6			
43	*Putnam Memorial (New)	OC	1949	2-4	Lewis E. Ludlum, (Supply) B. 534, Shelby	5				14		19		19	1	7			
44	Ross Grove	OC	1881	2-4		9				14	9	229	48	277	1	7	**		
45	Sandy Plains	OC	1854	1-3	Hugh F. Harrill, R. 4, Shelby	16				1	15	226	97	323	2	8	**		
46	Shelby First	C	1847	All	Harlan H. Harr s. 405 W. Warren, Shelby	73				121	296	2089	398	2487	2	241	**		
47	Shelby Second	C	1908	All	W. W. Harris, 914 S. LaFayette, Shelby	65				61	36	713	98	811	2	168			
48	Shelby Bethel	C	1940	All	D. W. Digh, 215 Gidney, Shelby	33				19	28	384	39	423	4	129			
49	Shelby Calvary	C	1935	All	W. T. Furr, 609 Gardner, Shelby	39				72	18	434	50	484	3	125	**		
50	Shelby Dover	V	1925	All	E. M. Smith, R. 4, Shelby	49				13	44	459	50	509	1	60	**		
51	Shelby Eastside	C	1921	All	E. B. Hicks, 1012 Buffalo, Shelby	41				70	41	542	110	652	2	150	**		
52	Shelby Highland	C	1948	All	J. R. Howe, 724 Blanton, Shelby	7				20	2	67	38	105	1	22			
53	Union	OC	1885	2-4	G. C. Teague, R. 5, Shelby	12				1	25	214	70	284	1	7			
54	Victory	OC	1948	All	G. R. Davis, P.O. 2486, W. Gastonia	24				3		50		50	3	10			
55	Waco	V	1842	1-3	A. M. Kiser, Waco	13				13	11	208	48	256	2	27			
56	Wallace Grove	OC	1929	1-3	Chess Smart, R. 1, Connley Springs	1				1	4	39	26	65	2	4			
57	Zion	OC	1816	1-3	W. P. Biggerstaff, R. 5, Shelby	22				9	14	318	106	424	3	18	**		
58	Zoar	OC	1837	All	H. B. Alexander, R. 3, Shelby	20				28	13	195	97	292	2	12	**		
						1075				1014	1089	15,610	3,364	18,974	110	2026	21	28	

** Denotes Yes

Association—Kings Mountain

For Year Ending (Month) September 30, 1949

Clerk—Lawrence Roberts

Moderator—J. W. Suttle

TABLE B — THE SUNDAY SCHOOL

SUNDAY SCHOOL ENROLLMENT

V. B. S.

CHURCHES		SUNDAY SCHOOL SUPERINTENDENTS AND ADDRESSES														
		Cradle Roll	Nursery	Beginners	Primaries	Juniors	Intermediates	Young People	Adults	Extension Department	Classes and Departments	Mission Sunday School Enrolment	Total Sunday Enrolment	Average Attendance	Vacation Bible School Enrolment	Average Attendance
1	Allen Memorial															
2	Beaver Dam	6	8	13	11	13	17	22	48	2	3	143	75	50	47	
3	Bethlehem	7	20	22	29	35	46	44	101	15	7	326	200	85	83	
4	Bethany		21	10	11	26	34	51	98	32	5	288	141	75	72	
5	Bollinger Springs		19	14	20	9	14	22	49		3	150	92			
6	Bolton's	1	49	30	37	46	59	105	103	70	4	30	533	320	112	102
7	Carpenters Grove	6	19	19	19	41	24	19	66		3	197	127	90	76	
8	Cesar		5	11	10	17	15	23	43	1	2	127	74	37	35	
9	Community		13	9	11	18	12	45	44	8	5	165	64	40	37	
10	David		8	10	10	8	10	11	31		2	90	65			
11	Double Shoals		10	11	16	16	29	14	55		5	156	88	61	53	
12	Double Springs		13	7	13	12	13	29	30	18	14	149	85	68	59	
13	Elizabeth		18	28	45	64	41	43	138	20	4	401	215	170	149	
14	Fallston		17	30	30	43	43	71	209	30	6	528	286			
15	Flint Hill		6	14	18	25	34	116	24	6	257	111	44			
16	Grover First		14	41	42	35	39	35	105		8	319	175	135	117	
17	Kings Mtn., First		10	23	16	15	33	36	138	30	4	338	160	88	81	
18	Kings Mtn., Second		29	31	25	56	54	64	211	35	4	566	292	140	125	
19	Kings Mtn., Macedonia	1	36	29	50	85	64	114	121		8	517	285	166	141	
20	Kings Mtn., Temple		10	17	34	33	32	32	99	5	4	276	146	120	101	
21	Lattimore		5	17	27	37	32	30	74		6	228	125	112	94	
22	Lawndale		10	18	19	21	21	21	72		5	187	93	109	95	
23	Love Valley									UNION SUNDAY SCHOOL						
24	Mt. Sinai		3	4	5	2	4	5	8		2	33	25	30	26	
25	Mulls Chapel		12	28	23	16	18	60	43		4	204	110	80	73	
26	New Bethel		3	5	6	8	10	10	30		2	74	48			
27	New Buffalo		7	10	15	29	18	25	51		4	253	157	97	86	
28	New Hope		7	10	10	16	15	6	17		5	86	61	75	57	
29	New Prospect		11	18	21	27	18	83	73		3	264	131	53	48	
30		4	6	6	8	8	18	40	30	8	3	131	71			

30	New Camps Creek	Willie Sheppard, R. 1, Shelby	1	1	1	1	3	9	10	14	2	35	24				
31	Normans Grove	Mrs. John Boggs, Jr., R. 3, Lawndale	1	1	1	1	3	19	17	15	3	54	30				
32	North Brook																
33	Oak Grove	Richard Spencer, R. 3, Kings Mtn.	1	1	1	1	4	11	11	15	3	59	38				
34	Oak View																
35	Patterson Grove	Mrs. Thurman Scism, R. 1, Kings Mtn.	1	1	1	1	5	16	28	17	2	104	65				
36	Patterson Springs	Mrs. Mozell McSwain, R. 2, Shelby	1	1	1	1	5	9	10	12	10	18	2	61	35		
37	Plains View		1	1	1	1	—	—	—	—	—	—	—	—	—		
38	Pleasant Grove		1	1	1	1	—	—	—	—	—	—	—	—	—		
39	Pleasant Hill	Frank Cornwell, R. 2, Kings Mtn.	1	1	1	1	4	18	12	24	2	68	40	—	—		
40	Pleasant Ridge	Mrs. Charley Wyatt, R. 4, Shelby	2	1	1	1	5	24	28	20	4	97	58	—	—		
41	Polkville																
42	Poplar Springs																
43	*Putnam Memorial (New)																
44	Ross Grove																
45	Sandy Plains	Mrs. Luther Walker, R. 4, Shelby	1	1	1	1	—	—	—	—	—	—	—	—	—		
46	Shelby First	L. T. Hamrick, 891 W. Marion, Shelby	2	4	4	1	2	13	30	50	53	25	51	7	216	140	**
47	Shelby Second	Miss Sara Posey, 933 S. Morgan, Shelby	2	2	2	1	2	9	34	36	41	9	30	4	154	76	**
48	Shelby Bethel	Darvin Wilkie, 131 Pine, Shelby	1	2	1	1	1	6	15	23	17	8	15	3	81	53	—
49	Shelby Calvary	J. Ben Hendrick, 504 Booker, Shelby	3	2	1	1	1	9	18	27	21	13	30	8	116	84	**
50	Shelby Dover	Miss Mable Myers, R. 4, Shelby	1	2	1	1	1	6	24	42	25	4	16	6	117	74	**
51	Shelby Eastside	Robert M. Dorsey, Jr., 620 Buffalo, Shelby	1	2	1	1	1	6	10	27	18	25	24	3	107	89	**
52	Shelby Highland	Miss Laura Porter, 335 Highland, Shelby	1	1	1	1	1	5	20	10	11	9	19	3	72	50	—
53	Union	Mrs. A. D. Harris, R. 4, Shelby	1	1	1	1	1	5	8	14	12	10	16	7	67	37	—
54	Victory																—
55	Waco																—
56	Wallace Grove																—
57	Zion	Miss Ruby Irvin, 1012 N. LaFayette, Shelby	1	1	1	1	2	5	11	17	22		42	10	102	72	—
58	Zoar	Kenneth Hollifield, R. 3, Shelby	2	1	1	1	1	6	16	19	23	18	13	5	94	68	**
		TOTALS	38	46	40	36	195	179	721	698	557	605	145	3205	2046	4	7

Association—Kings Mountain

For Year Ending (Month) September 30, 1949

Associational Director—Mrs. Smoot Baker

TABLE E — BROTHERHOOD WORK — BUILDING — GOALS

BROTHERHOOD		BUILDING			GOALS			
CHURCHES	PRESIDENTS OF MEN'S BROTHERHOODS AND ADDRESSES	Enrolment of Brotherhood	Meetings Held During Year	Value Pastor's Home	Value of Church Property Including Pastor's Home	Total Church Debt at End of Year	Goal Co-operative Pro- gram or Unified Budget New Year	Goal Association Missions Coming Year
1	Allen Memorial				\$ 16,000	\$ 4,000		\$ 7.00
2	Beaver Dam	15	1		90,000	11,000		
3	Bethlehem				30,000			
4	Bethany				25,000	1,000		
5	Boiling Springs			\$ 5,000	70,000		\$ 2,000	150.00
6	Buffalo				11,800	1,500		
7	Carpenters Grove				8,500			
8	Casar				7,700		110.00	78.00
9	Community				6,700		20.00	
10	David			10,000	25,000			
11	Double Shoals				50,000	8,000	100.00	89.25
12	Double Springs	20	2		35,300			
13	Elizabeth			17,000	88,000	2,800	33%	84.00
14	Fallston				35,000		10%	
15	Flint Hill			8,200	20,500			
16	Grover First			5,000	25,000			
17	Kings Min., First			6,000	61,200			
18	Kings Mtn., Second			8,000	28,000		10%	
19	Kings Mtn., Macedonia			6,000	25,000		10%	
20	Kings Mtn., Temple				35,000	10,000	10%	7%
21	Lattimore				20,000			
22	Lawndale							
23	Love Valley				1,500		40.00	
24	Mt. Sinai				10,700			
25	Mulls Chapel				5,000			
26	New Bethel			8,200	24,000			
27	New Buffalo				11,000	400		
28	New Hope				31,000			
29	New Prospect				25,000	7,200		35.00

TABLE F — CHURCH RECEIPTS AND EXPENDITURES

CHURCHES	Funds on Hand Beginning of Year	Total Gifts Recorded all offerings and organizations	Pastor's Salary Paid for Year	Other Salaries	Maintenance Church Property	New Buildings	Literature Song Book, etc.	Local Mission and Benevolences	Revival Expense and Pastoral Supply	Payment on Church Debt	Other Local Expenses	Total Local Expenditures
1 Allen Memorial	\$ 1,494.30	\$ 3,349.26	\$ 450.00	\$ 72.00	\$ 51.76	\$ 855.85	\$ 828.79	\$ 121.54	\$ 364.85	\$ 200.00	\$ 1,004.16	\$ 3,448.95
2 Beaver Dam	24,700.00	24,355.03	1,680.00	580.00	454.64	38,366.13	656.20	211.56	385.00		769.00	43,102.03
3 Bethlehem	1,500.00	6,065.22	1,351.55	241.85	244.00		781.75	635.54	214.13		1,195.12	4,653.68
4 Bethany	1,381.8	6,734.75	1,485.00	47.12		5,824.42	75.41	45.00	100.00			7,576.96
5 Young Springs	8,900.00	24,560.41	3,600.00	2,475.00	1,224.19		1,008.87	1,158.06	305.00		5,137.44	15,695.56
6 Buffalo	131.2	7,097.50	919.20		188.39	4,216.58			50.00			5,374.08
7		4,731.5	713.70		315.22		100.04	278.46	193.41		77.64	1,678.47
8		4,277.6	1,380.00	146.75	518.09		269.38	80.69	640.71		326.15	3,361.77
9 Community	128.00	1,052.00	300.00	96.00			115.00		125.00	325.00	165.00	1,126.00
10 David	205.07	3,342.26	1,290.00	260.00	34.00		220.08	27.59	191.76	613.69	463.44	3,100.56
11 Dotable Shouls	6,452.50	38,544.30	1,081.26	140.00	123.50	42,000.00	174.29		199.00		115.09	43,833.14
12 Double Springs	1,196.30	10,815.97	1,800.00	1,200.00	441.00		574.12	547.37	767.81		739.51	6,069.81
13 Elizabeth	1,249.87	15,397.20	3,250.00	1,200.00	244.17	3,594.11	758.33	166.54	679.13	2,685.00	848.52	13,415.80
14 Fallston	9,308.73	8,728.28	1,200.00	216.00	2,035.91		459.37	35.00	477.41		1,029.36	5,513.05
15 Flint Hill	200.00	4,991.69	2,080.00	208.00	500.00		178.00	378.00	356.00		200.00	3,894.00
16 Grover First	6,377.93	10,062.73	3,900.00	300.00	1,005.00		489.99	290.76	639.62		518.44	7,143.81
17 Kings Mtn., First	14,534.45	25,739.61	4,455.00	3,630.00	2,161.93		1,628.90	580.37	457.90		3,344.92	16,259.02
18 Kings Mtn., Second	12,800.00	13,487.28	3,640.00		1,292.15	3,181.85	460.10	909.89	250.00		38.49	9,772.48
19 Kings Mtn., Macedonia	6,052.10	7,337.61	3,309.67	284.48	364.27		489.09	274.20	303.58		1,025.58	6,052.87
20 Kings Mtn., Temple	600.00	8,400.18	2,039.40	300.00	283.61	3,609.65	288.87	196.26	75.00	1,200.00	45.00	8,037.79
21 Lattimore	2,346.06	9,321.42	1,200.00	470.00	177.87	8,556.32	185.25	247.10	135.00			11,031.54
22 Lawndale	2,510.55	5,867.61	762.48	60.00		300.00	146.56		424.40		249.75	1,943.19
23 Love Valley	312.50	998.67	624.00				57.76		20.00		86.74	788.50
24 Mt. Sinai	2,436.29	3,931.73	886.08	120.00	71.45		227.16	205.87	22.16		52.30	1,789.97
25 Mulls Chapel	12.54	601.32	364.15				34.47		105.00		88.80	587.42
26 New Bethel	5,500.00	22,027.20	1,106.25	180.00	165.88	8,065.46	284.34		165.00		1,030.19	10,997.12
27 New Buffalo	356.84	3,945.86	780.00	52.00	61.20	2,442.21	153.97	193.15	78.00	259.57		4,020.10
28 New Hope	1,038.35	5,967.83	1,200.00	215.00	355.55		500.41	744.37	520.54		1,577.60	5,113.47
29 New Prospect	5,071.16	8,379.00	500.00	180.00	105.00	11,500.00	100.00	20.00	200.00		106.55	12,711.55

30	New Camps Creek	108.57	1,571.85	586.78	117.50	15.72	37.62	31.24	82.50	786.22	1,657.58
31	Normans Grove	143.53	2,086.54	402.93	25.00	3,15.52	148.57	307.53		192.24	1,421.80
32	North Brook	1,057.93	4,232.42	1,040.00	52.00	3,25.96	148.85	182.45		138.79	5,036.93
33	Oak Grove	1,310.08	16,593.82	1,140.00	273.00	121.31	13,899.12	26.57	1,000.00	129.85	17,010.03
34	Oak View	220.66	4,708.85	2,340.00	144.00	231.67	718.95	214.70		394.06	4,351.18
35	Patterson Grove	1,918.98	4,678.99	2,400.00	236.80	236.80	362.74	1 6 25		878.06	4,190.76
36	Patterson Springs	2,667.45	4,239.43	1,020.00	282.16	127.75	504.76	427 7		228.70	3,071.68
37	Plains View	250.50	2,009.73	520.00	21.50	1,102.00	88.83	170.00	210.00	53.96	2,164.29
38	Pleasant Grove	260.29	3,545.11	600.00	180.00	292.76	237.96	755.46		134.94	2,206.15
39	Pleasant Hill	624.71	5,199.77	1,008.00	150.00	594.40	370.21	250.03		174.36	3,975.27
40	Pleasant Ridge	3,035.23	4,561.84	1,300.00	445.00	170.60	356.05	472.96		128.36	2,992.13
41	Polkville	429.58	4,441.02	1,400.00		445.82	186.93	443.58		238.98	4,304.30
42	Poplar Springs	1,012.24	6,191.22	1,000.00	600.00	1,330.30	396.58	250.00		585.47	4,222.35
	Memorial (Net)		435.00							45.00	45.00
44	Ross Grove	819.97	5,808.08	955.00	360.00	1,135.36	295.13	205.00			3,159.67
45	Sandy Plains	1,565.21	8,626.83	1,100.00	163.00	630.13	243.90	350.95		982.77	8,393.25
46	Shelby First	44,158.01	79,848.84	5,400.00	15,529.73	17,436.66	2,615.93	1,903.17		5,714.67	50,471.14
47	Shelby Second	339.35	29,106.76	4,160.00	4,500.00	2,553.17	1,613.64	766.12		2,235.10	16,170.28
48	Shelby Bethel	3,299.40	17,993.75	3,278.60	1,924.00	1,875.48	451.21	2,785.46	3,333.60	4,363.91	18,555.26
49	Shelby Calvary	9,787.39	24,849.61	4,195.00	560.00	2,007.62	821.51	203.30	300.00	2,588.73	31,962.24
50	Shelby Dover	7,055.72	17,691.82	3,900.00	1,600.50	887.61	790.87	401.00		1,466.77	10,783.20
51	Shelby Eastside	22,959.57	41,000.00	4,680.00	3,640.00	2,419.00	1,365.00	300.00		2,000.00	57,604.00
52	Shelby Highland	244.75	3,632.48	965.50	180.00	135.10	226.66	61.00		457.39	2,767.77
53	Union	2,248.43	3,573.75	1,500.00	250.00	40.00	99.17	225.00		2,426.43	4,821.39
54	Victory	81.44	1,586.89	660.00		8.01	36.00	300.00	484.54	55.00	1,543.55
55	Waco	801.70	5,721.72	1,200.00	170.00	274.85	301.35	360.40		1,102.37	3,408.97
56	Wallace Grove	119.00	510.55	296.27		8.13	40.00	123.00	90.00		557.40
57	Zion	8,299.96	14,463.90	2,100.00	480.00	744.03	600.00	833.33		715.25	5,520.58
58	Zoar	519.03	9,932.66	1,219.97	204.00	326.03	506.63	305.00		115.04	5,730.41
	TOTALS	\$245,270.16	\$619,254.77	\$96,815.79	\$44,723.51	\$52,002.76	\$23,678.87	\$19,676.47	\$10,783.90	\$48,566.21	\$536,083.28

For Year Ending (Month) September 30, 1949

Association—Kings Mountain

Associational Treasurer—Lawrence Roberts

See Page 94 for Treasurers and Addresses

TABLE G — GIFTS FOR ALL MISSIONS, EDUCATION, ORPHANAGES, ETC.

CHURCHES	Co-operative Program (or Unified Budget)		Associational Missions		Designated State Missions		Designated Home Missions		Designated Foreign Missions		Schools, Colleges, and Seminaries		Orphanage, Total Gifts		Designated to Hospitals		Relief and Annuity; Other Objects		Total Gifts for Missions		Grand Total for All Purposes		Balance All Funds																																																																																																																																																																																																																																																																																																																																																																																																																																																																																																																																																																																																																																																																																																																																																																																																																																																																																																																																																																																																																																																																																																																																																																																																																																																																																																																																																																																																																														
	\$	\$ 96.25	\$ 7.00	\$ 42.97	\$ 33.00	\$ 200.00	\$ 200.00	\$ 100.00	\$ 64.44	\$ 14.72	\$ 67.20	\$ 258.38	\$ 3,707.33	\$ 1,136.32	\$ 1,753.00	\$ 44,855.03	\$ 300.00	\$ 1,324.80	\$ 456.19	\$ 7,660.41	\$ 22,477.29	\$ 11,291.84	\$ 1,621.61	\$ 1,850.56	\$ 60.00	\$ 27.70	\$ 8.62	\$ 493.68	\$ 1,068.93	\$ 292.90	\$ 9,306.14	\$ 395.19	\$ 6,731.80	\$ 19,045.19	\$ 14,800.00	\$ 5,765.35	\$ 453.65	\$ 9,865.62	\$ 12,047.42	\$ 469.47	\$ 4,025.98	\$ 12.44	\$ 15,052.53	\$ 67.56	\$ 805.39	\$ 500.00																																																																																																																																																																																																																																																																																																																																																																																																																																																																																																																																																																																																																																																																																																																																																																																																																																																																																																																																																																																																																																																																																																																																																																																																																																																																																																																																																																																																							
1 Allen Memorial																																																																																																																																																																																																																																																																																																																																																																																																																																																																																																																																																																																																																																																																																																																																																																																																																																																																																																																																																																																																																																																																																																																																																																																																																																																																																																																																																																																																																																																					</

30	New Camps Creek	5.50							8.72	14.22	1,671.80	8.62
31	Normans Grove	183.10	30.00	51.00	25.00	51.16	50.00	80.36	40.31	694.84	2,086.64	143.53
32	North Brook	20.00	72.80	27.00	5.00			37.40	10.00	205.41	5,242.37	47.98
33	Oak Grove	255.00	106.50	26.85				102.00		537.55	17,547.58	356.32
34	Oak View	70.00	25.00					237.00	100.00	578.53	4,929.71	
35	Patterson Grove	442.78	122.72	112.00	46.1	54.40		308.41	72.91	1,219.36	5,410.12	1,187.85
36	Patterson Springs	269.37	114.18	37.87		90.00	75.00	264.38	46.53	988.68	4,060.36	2,846.52
37	Plains View		12.00					20.00	5.00	37.00	2,201.29	57.94
38	Pleasant Grove	165.40	46.00	75.00	46.33	38.33	308.20	70.00	25.00	825.41	3,031.56	773.84
39	Pleasant Hill	275.65	145.00	100.00	35.00	42.60	100.00	319.06	62.05	1,398.45	5,373.72	450.76
40	Pleasant Ridge	440.00	116.00	56.01	40.00	16.55	153.50	153.50	57.45	1,169.71	4,161.84	3,435.23
41	Polkville	120.00	84.00	31.25		33.61			24.60	309.61	4,613.91	256.69
42	Poplar Springs	175.80	5.35		12.20	15.30	311.23	182.75	100.00	956.63	5,178.98	2,024.48
43	*Putnam Memorial (New)	12.25								12.25	57.25	377.84
44	Ross Grove	437.24	94.35	175.38	204.86	228.00	341.27	544.05	135.91	2,161.06	5,320.73	1,307.32
45	Sandy Plains	135.15	77.00	47.93	17.59	17.59	135.00	112.40	35.97	690.24	9,083.49	1,090.35
46	Shelby First	9,426.97	425.00	967.21	1,376.2	6,436.00	16,710.11	1,077.43	1,000.00	35,780.94	26,252.08	37,754.77
47	Shelby Second	3,803.32	377.00	10.25	24.15	151.87	2,493.56	1,392.85	115.00	8,792.73	24,963.01	4,483.10
48	Shelby Bethel	528.00	239.00				274.00	274.00		1,565.00	20,120.26	1,172.89
49	Shelby Calvary	1,517.77	100.00	58.53	9.00	18.23		290.70	22.90	2,017.13	33,979.37	657.63
50	Shelby Dover	4,028.77	273.00	10.72	103.84	113.12	802.79	793.11	100.00	6,646.85	17,430.05	7,317.17
51	Shelby Eastside	1,560.00	327.60	200.00	569.38	1,020.00		312.00	56.50	4,476.28	62,080.28	1,879.29
52	Shelby Highland	57.85	25.00	13.00	3.50	10.00		17.69	12.00	139.04	2,906.81	970.42
53	Union	207.43	18.52	40.25	7.13	26.88		52.00	11.76	405.97	5,227.36	594.82
54	Victory	10.00	6.25							51.25	1,594.80	73.53
55	Waco	451.13	87.00	155.68	136.34	169.68	451.59	274.38	105.86	1,935.40	5,344.37	979.10
56	Wallace Grove		2.00						7.00	22.10	579.50	50.05
57	Zion	1,619.97	147.00	113.55	65.50	111.65	600.00	450.20	100.88	3,332.75	8,853.33	13,870.53
58	Zoar	916.40	70.00	33.00	33.67	33.68	51.00	228.14	47.20	1,666.86	7,397.27	3,054.42
	TOTALS	\$41,054.63	\$5,793.43	\$4,601.23	\$4,414.23	\$11,638.87	\$29,596.34	\$15,029.81	\$4,259.74	\$6,525.49	\$121,214.06	\$206,528.59

For Year Ending (Month) September 30, 1949

Association—Kings Mountain

Associational Missionary—Lewis E. Ludlum

See Page 95 for Treasurers and Addresses

CHURCHES AND ADDRESSES

TREASURERS AND ADDRESSES

1	Allen Memorial	Brady Lall, R. 1, Grover
2	Beaver Dam	W. H. Humphries, R. 4, Shelby
3	Bethlehem	William Herndon, R. 2, Kings Mtn.
4	Bethany	Mrs. B. Hayes Ledford, R. 1, Grover
5	Boiling Springs	J. L. Lovelace, Boiling Springs
6	Buffalo	W. C. Vermillion, R. 1, Shelby
7	Carpenters Grove	Mrs. Boyd Warlick, R. 1, Belwood
8	Casa	A. A. Richard, Casar
9	Community	Mrs. Fred Powell, R. 5, Shelby
10	David	Perry H. McSwain, R. 2, Kings Mtn.
11	Double Shoals	E. B. Spangler, R. 1, Shelby
12	Double Springs	F. S. Crowder, Lattimore
13	Elizabeth	S. B. Wilson, 926 E. Marion, Shelby
14	Fallston	E. G. Spurling, Fallston
15	Flint Hill	L. N. Harrill, R. 2, Shelby
16	Grover First	Mrs. J. B. Ellis, Grover
17	Kings Mtn., First	Miss Lula Mae Teague, Kings Mtn.
18	Kings Mtn., Second	S. O. Kerby, B 122, Kings Mtn.
19	Kings Mtn., Macedonia	Henderson Herndon, Kings Mtn.
20	Kings Mtn., Temple	R. H. Hord, Kings Mtn.
21	Lattimore	Margaret Lattimore, Lattimore
22	Lawndale	Mrs. F. L. Rollins, Lawndale
23	Love Valley	Mrs. J. P. Van Dyke, R. 2, Kings Mtn.
24	Mt Sinai	L. Y. Putnam, R. 2, Shelby
25	Mulls Chapel	Elywn Wright, R. 1, Shelby
26	New Bethel	John F. Carpenter, Lawndale
27	New Buffalo	J. E. McGinnis, B 486, Shelby
28	New Hope	Hazeline Turner, R. 1, Grover
29	New Prospect	Fibra Poston, R. 2, Cherryville
30	New Camps Creek	Carl Brooks, R. 1, Shelby
31	Normans Grove	John Boggs, Jr., R. 3, Lawndale
32	North Brook	Mrs. Lee Bess, R. 1, Cherryville
33	Oak Grove	J. S. Ware, R. 3, Kings Mtn.
34	Oak View	T. L. Spearman, R. 1, Kings Mtn.
35	Patterson Grove	Lloyd Phifer, Kings Mtn.
36	Patterson Springs	Miss Ann Borders, Patterson Springs
37	Plains View	Pete Mull, R. 1, Cherryville
38	Pleasant Grove	Newnell Wright, R. 1, Shelby
39	Pleasant Hill	R. W. Lowery, R. 2, Shelby
40	Pleasant Ridge	A. Yates Hamrick, Star R., Lattimore
41	Polkville	Fred Mintz, R. 1, Lawndale
42	Poplar Springs	Cree Hamrick, R. 2, Shelby
43	*Putnam Memorial (Ne	Mrs. James R. Webber, R. 3, Shelby
44	Ross Grove	J. H. Allen, R. 5, Shelby
45	Sandy Plains	T. O. Wiggins, R. 4, Shelby
46	Shelby First	Jesse Bridges, B 60, Shelby
47	Shelby Second	Howard DeBrew, 543 W. Sumter, Shelby
48	Shelby Bethel	C. O. Bridges, 113 W. Sumter, Shelby
49	Shelby Calvary	Roy Panther, Shoe Shop, Shelby
50	Shelby Dover	Geo. H. Dover, 214 Gold, Shelby
51	Shelby Eastside	A. C. Bland, 901 N. Washington, Shelby
52	Shelby Highland	Sam Dayberry, 410 Highland Ave., Shelby
53	Union	Walter Bridges, R. 5, Shelby
54	Victory	John Caveny, R. 2, Kings Mtn.
55	Waco	U. A. Black, Waco
56	Wallace Grove	R. K. Blankenship, R. 5, Shelby
57	Zion	G. P. Irvin, 1012 N. LaFayette, Shelby
58	Zoar	Yancey Ellis, R. 3, Shelby

CHURCHES AND ADDRESSES FOR TABLE "G"

CLERKS OF CHURCHES AND ADDRESSES

1	Allen Memorial	Aileen Whitworth, R. 1, Grover
2	Beaver Dam	E. D. Humphries, R. 4, Shelby
3	Bethlehem	Lamar Herndon, R. 2, Kings Mtn.
4	Bethany	V. J. Hardin, R. 1, Grover
5	Boiling Springs	A. I. Jolley, Boiling Springs
6	Buffalo	W. A. Russ, R. 2, Cherryville
7	Carpenters Grove	E. L. Propst, R. 3, Lawndale
8	Casar	W. G. Murray, R. 1, Belwood
9	Community	Miss Mozell McKee, R. 3, Lawndale
10	David	L. V. Hoyle, R. 2, Kings Mtn.
11	Double Shoals	Forrest Bowen, R. 1, Lawndale
12	Double Springs	J. S. Gillespie, R. 4, Shelby
13	Elizabeth	Chas. W. Spake, 910 Hawthorne Rd., Shelby
14	Fallston	Wyte Royster, Fallston
15	Flint Hill	J. Rex Ledbetter, R. 2, Shelby
16	Grover First	Mrs. John Gold, Grover
17	Kings Mtn., First	Lula M. Teague, Kings Mtn.
18	Kings Mtn., Second	Sam T. McAbee, B 722, Kings Mtn.
19	Kings Mtn., Macedonia	O. T. Gunnells, R. 2, Kings Mtn.
20	Kings Mtn., Temple	Virginia Moss, 114 Walker, Kings Mtn.
21	Lattimore	Chas. B. Hamrick, R. 3, Shelby
22	Lawndale	C. D. Forney, Sr., Lawndale
23	Love Valley	Mrs. R. R. Van Dyke, R. 2, Kings Mtn.
24	Mt. Sinai	Foy B. Putnam, R. 2, Shelby
25	Mulls Chapel	Miss Mozelle Dellinger, R. 1, Shelby
26	New Bethel	Mrs. L. T. Noggle, B 231, Lawndale
27	New Buffalo	J. E. McGinniss, B 486, Shelby
28	New Hope	Hartness Gibson, R. 2, Shelby
29	New Prospect	Paul Hord, R. 1, Shelby
30	New Camps Creek	Carl Brooks, R. 1, Shelby
31	Normans Grove	Lloyd Boggs, R. 2, Lawndale
32	North Brook	Tom H. Wehunt, R. 1, Cherryville
33	Oak Grove	Horace Bell, R. 3, Kings Mtn.
34	Oak View	Mrs. J. R. Bumgardner, R. 1, Kings Mtn.
35	Patterson Grove	Marjorie Scism, R. 1, Kings Mtn.
36	Patterson Springs	Mrs. Mozell McSwain, R. 2, Shelby
37	Plains View	Mrs. Coy Leonhardt, R. 1, Cherryville
38	Pleasant Grove	V. A. Gardner, R. 5, Shelby
39	Pleasant Hill	Carl Dover, R. 4, Shelby
40	Pleasant Ridge	G. L. Hamrick, Star Rt., Lattimore
41	Polkville	Griffin Davis, R. 4, Shelby
42	Poplar Springs	A. T. Hamrick, 740 W. Warren, Shelby
43	*Putnam Memorial (New)	Mrs. James R. Webber, R. 3, Shelby
44	Ross Grove	Nester G. Hamrick, 121 N. LaFayette, Shelby
45	Sandy Plains	Matthew Mauney, R. 4, Shelby
46	Shelby First	Mary Sue Thompson, B 1352, Shelby
47	Shelby Second	Sara Posey, Sec. B. Church, Shelby
48	Shelby Bethel	Mrs. Alfred Greene, 352 Grice, Shelby
49	Shelby Calvary	Mrs. J. A. Bridges, 711 Gardner, Shelby
50	Shelby Dover	R. F. Lancaster, R. 4, Shelby
51	Shelby Eastside	Russell M. Craig, 605 Lineberger, Shelby
52	Shelby Highland	Laura Porter, 335 Highland Ave., Shelby
53	Union	Mrs. W. W. Mauney, R. 5, Shelby
54	Victory	J. D. Martin, R. 1, Grover
55	Waco	S. L. Dellinger, R. 1, Shelby
56	Wallace Grove	R. K. Blankenship, R. 5, Shelby
57	Zion	G. T. Cabaniss, R. 5, Shelby
58	Zoar	Miss Evelyn Humphries, R. 2, Shelby

