A stylized fantasy landscape illustration. In the upper left, a black silhouette of a dragon with spread wings flies against a light beige sky. Several small black bird silhouettes are scattered across the sky. On the right, a large, bright yellow sun or moon is partially obscured by a black silhouette of a castle with multiple spires and towers. The foreground features dark green and black silhouettes of jagged mountains and dense forests. The overall color palette is muted, with beige, olive green, and black tones.

From Folklore to Fantasy: Chronotopic Evolution in *The Witcher* Novels

Presented by Benjamin Flournoy

What We Will Cover



01


Introduction to
Chronotopes

02

Beauty and the
Beast Reinterpreted

03

Why This Matters

A stylized illustration in a flat, minimalist style. The background is a light beige color. In the upper left, a large black silhouette of a dragon with its wings spread is flying. To its right, three smaller black silhouettes of birds are flying. In the upper right, another large black silhouette of a dragon is flying. In the lower right, a black silhouette of a castle with multiple towers and spires is visible. The foreground consists of dark green, jagged silhouettes of trees or hills. The title '01 Chronotopes' is centered in a large, bold, black serif font. Below the title, a quote is written in a smaller, black serif font.

01 Chronotopes

“Where are we? When are we?” - Marty McFly,
Back to the Future

Mikhail Bakhtin



"We will give the name *chronotope* (literally, "time space") to the intrinsic connectedness of temporal and spatial relationships that are artistically expressed in literature." (Bakhtin 84)

Some Chronotopes Introduced:

- The Greek Romance
- Ancient Biography / Autobiography
- Folkloric Chronotope

The School Chronotope

Graduate and get that degree, Harry!

**Attend
Classes!**

1

4

**Blame Draco
For All Your
Problems!**

**Get Good
Grades!**

2

5

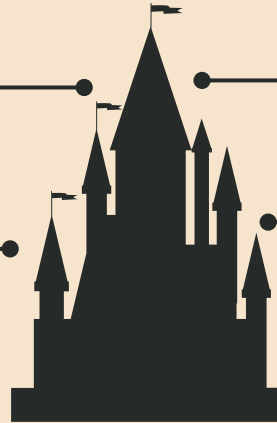
Make Friends!


**Develop
Skills!**

3

6

**Pull Some
All-Nighters!**





02

Beauty and the Beast

“Wasteland? I think you mean
Wonderland!” - Yeti, *Monsters Inc.*



The World of *The Witcher*

Narrative Similarities in Both Versions

01

Entry into the Supernatural

Both the merchant and Geralt detour into the magical realm.

02

Enchantment

Both monsters have been magically cursed by the supernatural to exist outside human reality.

03

Overarching Themes

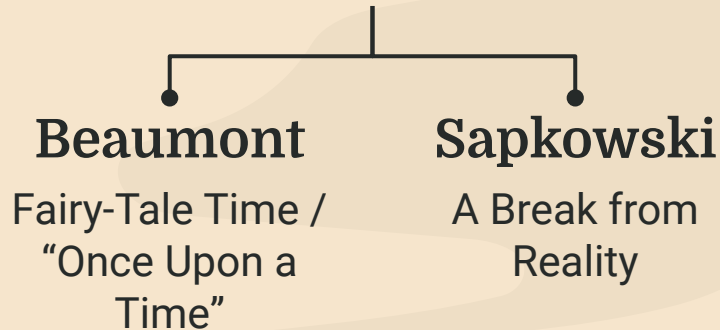
Both stories concern themselves with the themes of love and metamorphosis.

Temporality and Topography



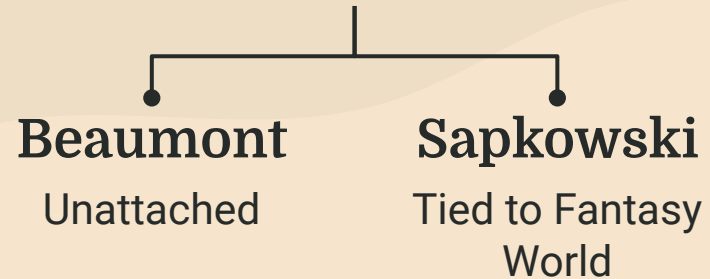
Temporality

Relationship to
Time



Topography

Relationship to
Place



Imaginary Reality in Fantasy

Merja Leppälahti

“[I]n fantasy the indefinite time and place of the fairy tale is fixed to an imaginary reality with fictitious history, families, and maps.” (179)



Camilla Ingemark's Chronotope of Enchantment

"Enchantment...usually stems from an encounter with a supranormal being that abducts or otherwise manipulates the human protagonist. It sometimes has an extraordinary effect on the victims, changing their relationship to the human world, on the one hand, and to the supranormal sphere, on the other. It may affect man's perception, his sense of his own body and its location in space. It may influence his notions of time and alter his personality. In short, it problematizes the definition of humanity and contests the taken-for-granted nature of the human world." (1)

Chronotope of Enchantment

The Enchanted Palace and Negotiations with Reality



Relationship with
Humanity



Identity



Temporal
Orientation



Different Worldviews, Different Outcomes



Beaumont's version reflects an understanding of reality informed by a singular vision of normality. All characters progress towards a monolithic "good."



Sapkowski's version reflects a disillusionment with traditional normality and a recognition of our complex relationships with reality informed by postmodern ideas.

The background is a stylized landscape. The sky is a light beige color with several white, horizontal, pill-shaped clouds. In the upper left, a group of small black birds is flying. In the center, a large black dragon with spread wings is flying. To the right, a large white circle representing the sun or moon is visible, with a few more small black birds flying around it. The horizon line is dark brown and jagged, representing hills or mountains. On the right side, there is a large, dark green silhouette of a forest. A single, thin, black tree stands on the horizon line to the left of the forest.

03

Why This Matters

“But you're part of this world!
Aren't you?” - Merry Brandybuck,
The Two Towers

Recent Scholarship



JSTOR Daily

“Queer Time: The Alternative to
‘Adulting’”

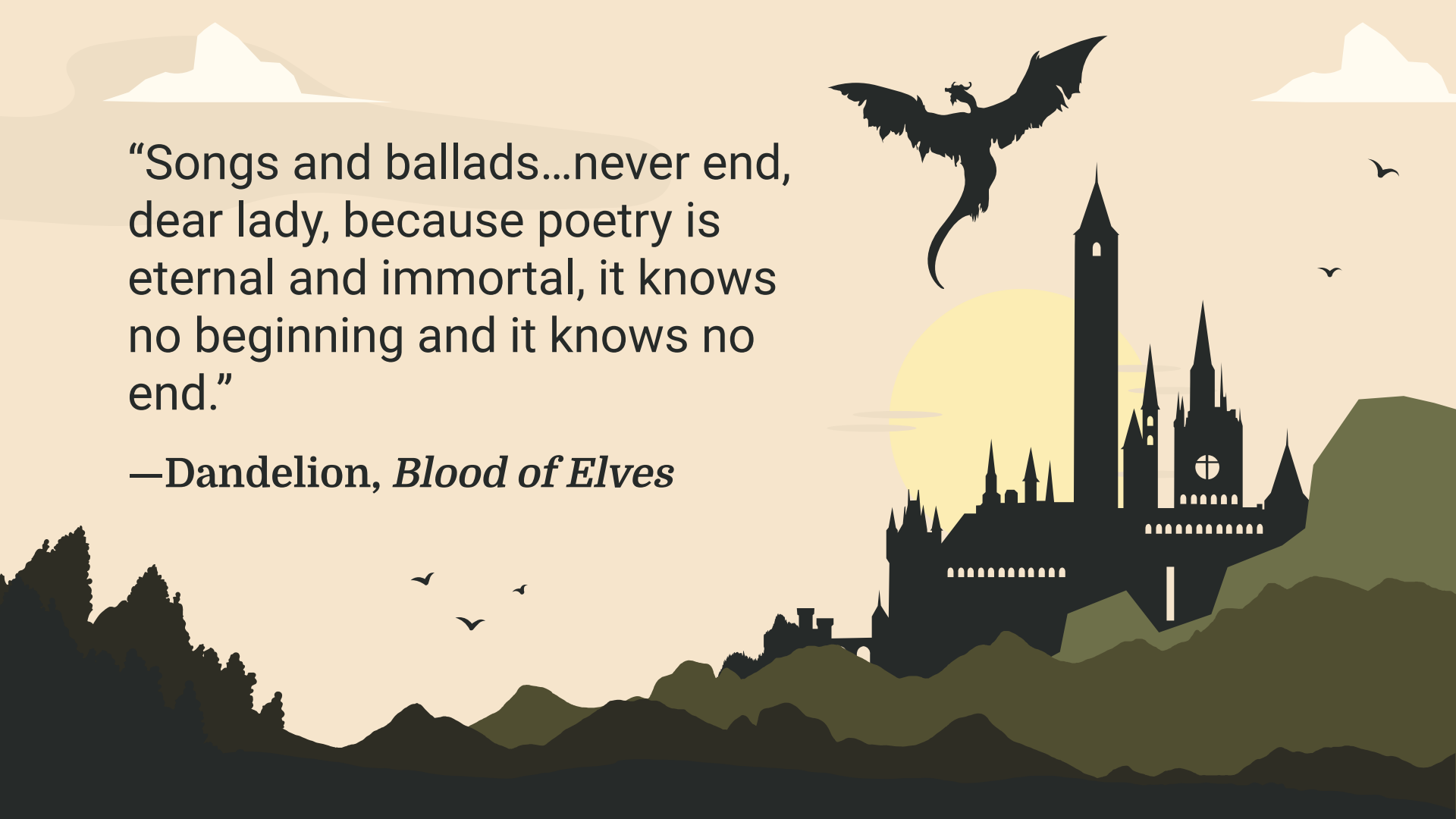


South Atlantic Quarterly


“Black Temporality in Times of
Crisis”

“Songs and ballads...never end,
dear lady, because poetry is
eternal and immortal, it knows
no beginning and it knows no
end.”

—Dandelion, *Blood of Elves*



Works Cited



Bakhtin, Mikhail. "Forms of Time and of the Chronotope in the Novel." *The Dialogical Imagination*, edited and translated by Michael Holquist and Caryl Emerson, Austin Univ. Texas Press, 1981, pp. 84-258.

Beaumont, Jeanne-Marie Leprince de Beaumont. "Beauty and the Beast." *Project Gutenberg*, <https://www.gutenberg.org/cache/epub/7074/pg7074-images.html>. Accessed 3 March 2023.

Ingemark, Camilla Asplund. "The Chronotope of Enchantment." *Journal of Folklore Research*, vol. 43, no. 1, 2006, pp. 1-30. *JSTOR*, <http://www.jstor.org/stable/3814858>. Accessed 25 Feb. 2023.

Leppälahti, Merja. "From Folklore to Fantasy: The Living Dead, Metamorphoses, and Other Strange Things." *Journal of the Fantastic in the Arts*, vol. 29, no. 2, 2018, pp. 179-200. *JSTOR*, <https://www.jstor.org/stable/26627620>. Accessed 3 March 2023.



Sapkowski, Andrzej. *The Last Wish*. Gollancz, 2020.



Remember to toss a coin to the presenters!

CREDITS: This presentation template was created **by**
Slidesgo, including icons **by Flaticon**, infographics &
images **by Freepik**

